

WARNING: IF EQUIPPED WITH AIR CUSHION RESTRAINT SYSTEM, DO NOT ATTEMPT ANY ADJUSTMENT, REPAIR OR REMOVAL OF ANY PORTION OF THE CHASSIS SHEET METAL WHICH WOULD REQUIRE REMOVAL OR DISCONNECTING OF THE BUMPER IMPULSE DETECTOR UNTIL THE DISCONNECTION PROCEDURE IS COMPLETED. THIS PROCEDURE MUST BE FOLLOWED TO PREVENT ACCIDENTAL DEPLOYMENT OF THE SYSTEM WHICH COULD RESULT IN PERSONAL INJURY AND/OR DAMAGE TO THE SYSTEM'S COMPONENTS. IN ADDITION, CARE MUST BE EXERCISED TO NEVER BUMP OR STRIKE THE BUMPER IMPULSE DETECTOR IN A MANNER WHICH COULD CAUSE INADVERTENT DEPLOYMENT OR IMPROPER OPERATION OF THE SYSTEM.

A.C.R.S. DISCONNECTION PROCEDURE

1. Turn ignition switch to "LOCK" position. Disconnect the negative battery cable from the battery and tape end.

FENDERS

CONTENTS

DESCRIPTION AND OPERATION:	
Description of Chassis Sheet Metal	8B-1
DIAGNOSIS: (Not Applicable)	
MAINTENANCE AND ADJUSTMENTS:	
Fender Adjustments	8B-1
MAJOR REPAIR:	
Fender and Wheel House Panel Removal and Installation	8B-1
SPECIFICATIONS: (Not Applicable)	

DESCRIPTION AND OPERATION

DESCRIPTION OF CHASSIS SHEET METAL

Refer to the 1975 Body Manual for H Body Sheet Metal Information.

X-A-B-C-E Series

The front of the assembly is supported by two mounts located at the frame side rails. Shims at these locations allow up and down movement of the front of the sheet metal assembly. Fore and aft and side adjustment is allowed by oversize holes at the fender rear attaching point and chassis sheet metal mounts. Special shims at the rear locations allow adjustment of the rear of the assembly. The lower rear edge of the assembly is attached to the body at the rocker panel by bolts on each side. Shims are used at this location. The bolts that retain the sheet metal braces must be torqued to the required torques. If these bolts are loose, the braces will not provide additional support for the sheet metal assembly.

MAINTENANCE AND ADJUSTMENTS

FENDER ALIGNMENT

It is necessary to analyze the sheet metal as a whole before adjustments are made for best results.

Preliminary Tightening

It is advisable to check tightness of all attaching screws and bolts since a true picture of the correction require-

ments cannot be obtained when the sheet metal is loose and free to shift.

After all parts are properly tightened, inspect fender and hood alignment. Make all inspections before performing any adjustments. An adjustment at one point will usually alter alignment at other points. The preliminary inspection should determine the adjustments that will produce the best overall alignment of hood and fenders at all points. Figure 8B-1 or 8B-2.

Before making any adjustment of sheet metal to provide necessary clearance, first make sure that front doors are properly aligned in the body openings. If fenders and door panel surfaces are not reasonably flush, realign them.

Refer to Figures 8B-3, 8B-4, 8B-5 and 8B-6 for sheet metal aligning tolerances.

X SERIES

Doors on X Series have welded hinges and cannot be adjusted.

MAJOR REPAIR

FENDER AND WHEELHOUSE REMOVAL AND INSTALLATION

X Series Fender and Wheel House Removal

1. Disconnect battery ground cable. Remove battery if right side assembly is to be removed.

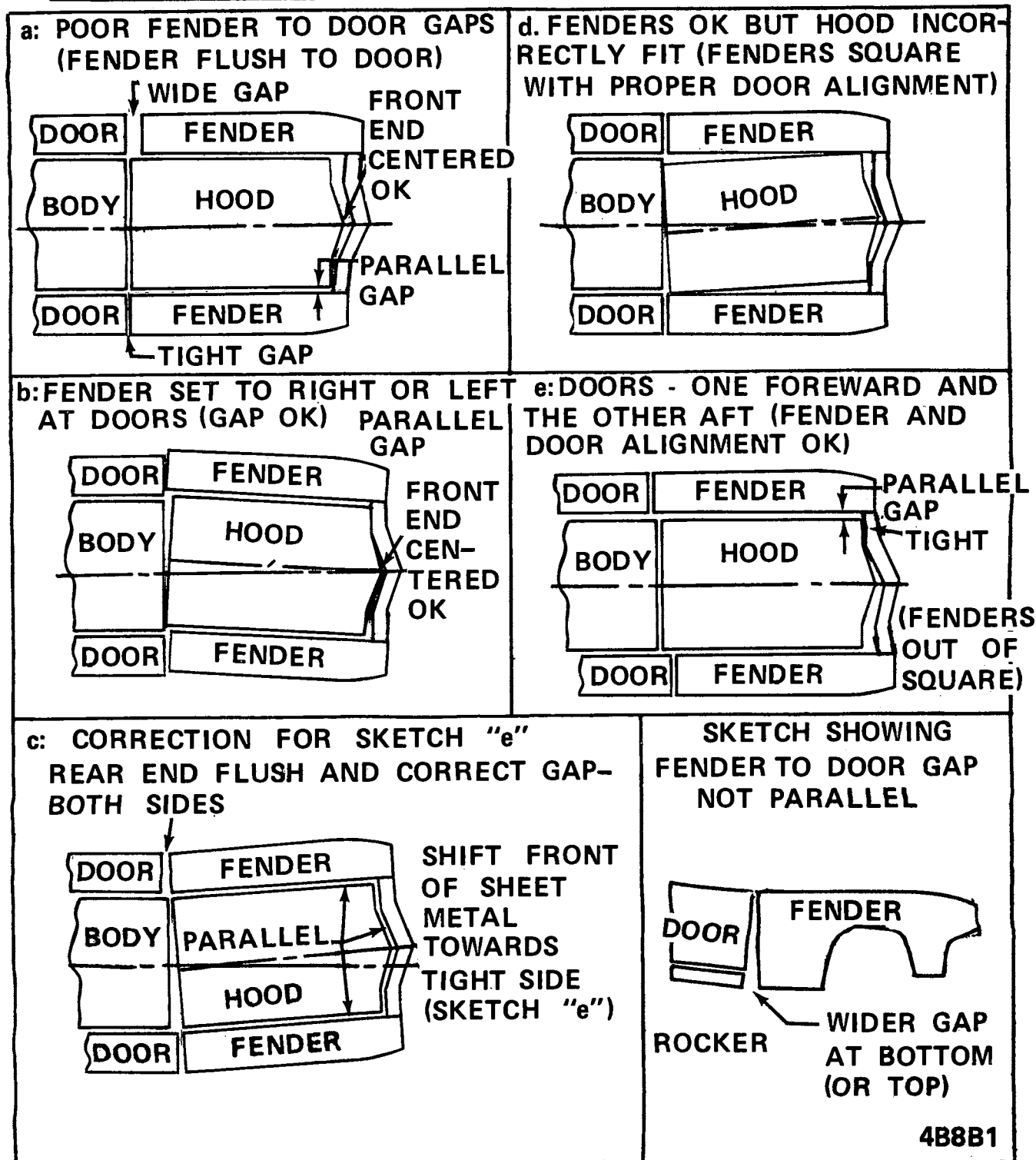
SKETCHES SHOWING CAUSES OF UNPARALLELED HOOD LINES

Figure 8B-1 A-B-C-E Series Sheet Metal Alignment

SKETCHES SHOWING CAUSES OF LONG AND SHORT FENDERS

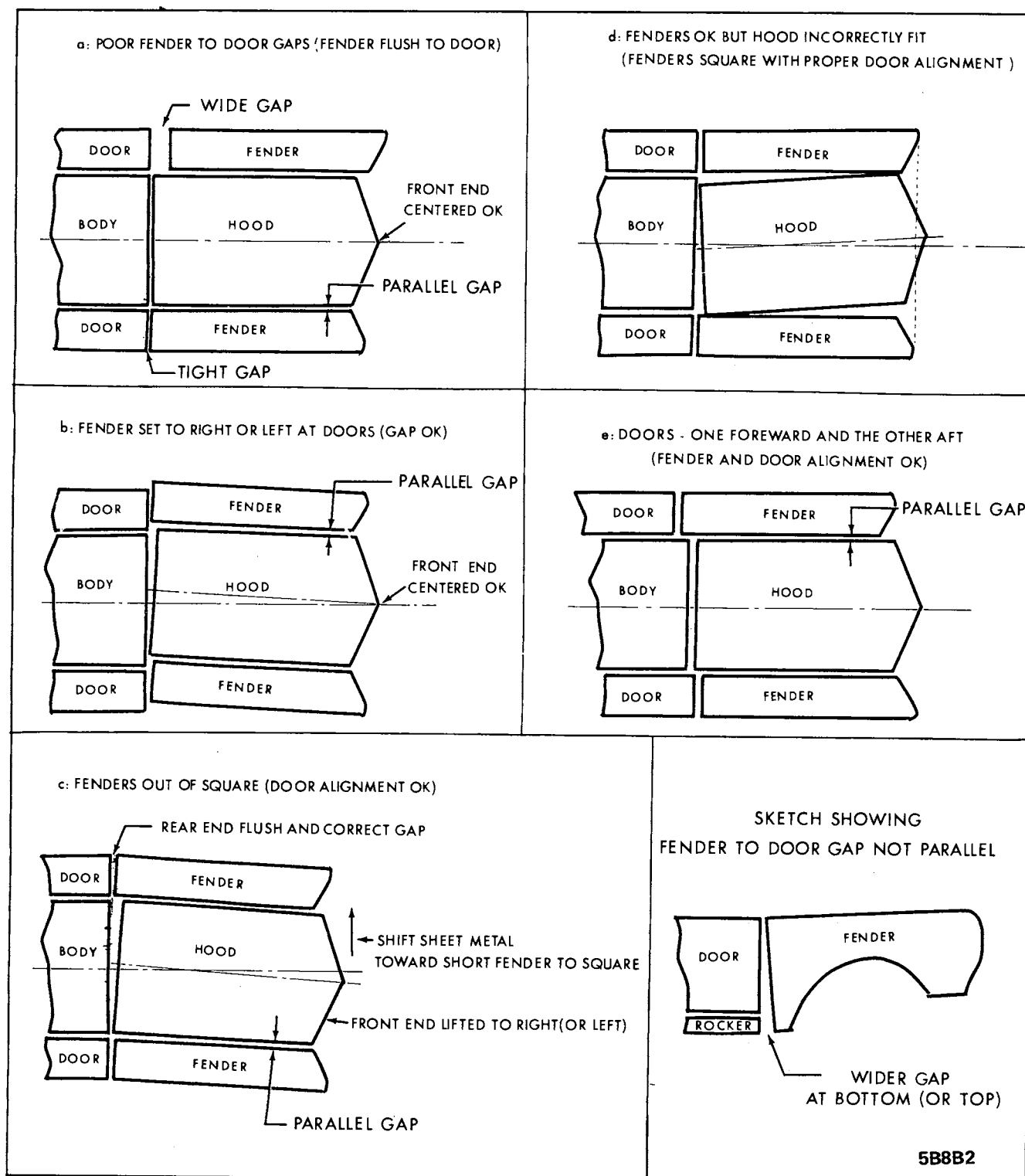


Figure 8B-2 X Series Sheet Metal Alignment

2. Place vehicle on hoist and remove wheel.
3. Remove hood hinge attaching screws and support hood in open position.
4. Disconnect any bottles, cables or hoses that connect to the wheelhouse, remove battery box if right side is to be removed. Remove fender brace.
5. Disconnect side marker light assembly.
6. Remove bolts securing the front of the fender to the radiator support. (Figures 8B-7)
7. Remove headlamp bezel and fender extension. (Figure 8B-11).
8. Remove screws retaining fender and wheelhouse assembly to cowl, radiator support, rocker panel. Note number and location of shims. (Figures 8B-9).
9. Remove final screws attaching wheelhouse to fender and separate. (Figure 8B-10). Transfer all necessary parts.

Installation

1. Reverse the removal procedure for installation.
2. Guide fender and wheelhouse into position first by inserting the fender in at the bottom adjacent to the door.
3. Install screws at rocker panel and cowl and adjust fender before tightening other screws. Always start adjustment with original amount of shims. (Figure 8B-9).
4. Remove vehicle from hoist.

A Series Fender Removal

1. Remove the chrome headlight ring.
2. Remove the 4 fender to radiator support bolts. See Figure 8B-14.
3. Remove the bolt attaching the fender brace rod to front lower edge of fender. See Figure 8B-15.
4. Support the hood in the open position and remove the hood hinge to fender bolts.
5. Remove the 5 fender to body bolts. See Figure 8B-16. Note number and size of shims for reinstallation.
6. Remove the side marker lamp socket by removing the spring clip retaining the lense. See Figure 8B-17.
7. Remove the fender to wheelhouse panel bolts. See Figure 8B-18. (Place protective cloth between fender and bumper.)
8. Remove fender by pushing backwards and up. Protect from contact with door.

A Series Fender Installation

1. Place fender in position. Be careful not to damage fender.
2. Reinstall fender to wheelhouse bolts. See Figure 8B-18.
3. Reinstall side marker socket and spring clip. See Figure 8B-17.

4. Install the 5 fender to body bolts and shims. See Figure 8B-16.
5. Install hood hinge.
6. Install fender brace rod. See Figure 8B-15.
7. Install the 4 fender to radiator support bolts. See Figure 8B-14 and install headlight ring.
8. Realign fender if necessary for proper adjustment. Figure 8B-4.

A Series Wheelhouse Panel Removal

1. Remove batter for right side removal or canister for left side removal.
2. Remove fender as per fender removal procedure.
3. Remove the battery box attaching bolts and then box. See Figure 8B-18.
4. Remove the wheelhouse to radiator support, and body bolts. See Figure 8A-18.

A Series Wheelhouse Panel Installation

1. Install the wheelhouse to radiator support and body bolts. See Figure 8B-18.
2. Install the battery box. See Figure 8B-18.
3. Install fender as per fender installation procedure.
4. Install battery and or canister. Align fender if necessary.

B-C Series Fender and Wheelhouse Removal

1. Disconnect battery cables and remove battery if battery is on same side as fender being removed.
2. Unfasten all electrical wires attached to wheelhouse.
3. Remove bolts securing battery base to support and wheelhouse. Lift out battery base.
4. Remove bolts securing battery base reinforcement to wheelhouse and radiator support. See Figure 8B-25.
5. Remove bolts securing outer end of radiator support to wheelhouse and fender. See Figure 8B-25.
6. Remove bolts securing front of fender to radiator support, and front end panel. See Figure 8B-25.
7. Remove screws and clip securing fender lower front baffle to frame. See Figure 8B-23.
8. Remove hood hinge to fender bolts supporting hood as outlined in Hood Removal.
9. Remove bolts securing wheelhouse to lower portion of cowl. Note shims. See Figure 8B-25.
10. Remove bolts securing lower rear edge of fender to rocker panel. Note shims. See Figure 8B-24.
11. Remove bolt securing upper rear portion of fender to hinge pillar.
12. Remove bolts securing upper rear portion of fender to upper portion of cowl. Note shims. See Figure 8B-24.
13. Disconnect antenna lead (if so equipped).
14. Remove bolts securing fender to upper tie bar.

15. Rise up and lift off fender and wheelhouse.
16. Wheelhouse can now be removed from fender by removing wheelhouse to fender attaching bolts. See Figure 8B-22.

B-C Series Fender and Wheelhouse Panel Installation

1. Install wheelhouse to fender and attach with bolts. See Figure 8B-22.
2. Install bolts, securing fender to upper tie bar.
3. Secure upper rear portion of fender to upper portion of cowl with bolts. See Figure 8B-24.
4. Secure upper rear portion of fender to hinge pillar with bolt.
5. Secure lower rear edge of fender to rocker panel with bolts. See Figure 8B-24.
6. Secure wheelhouse to lower portion of cowl with bolts. See Figure 8B-25.
7. Install 2 hood hinge to fender bolts supporting hood, as per hood hinge installation procedure.
8. Install screws and clip securing fender lower front baffle to frame. See Figure 8B-23.
9. Install bolts securing front of fender to radiator support. See Figure 8B-25.
10. Install bolts securing outer end of radiator support to wheelhouse and fender. See Figure 8B-25.
11. Install bolts securing battery base reinforcement to wheelhouse and radiator support. See Figure 8B-25.
12. Install battery base to support and wheelhouse.
13. Connect all electrical wiring and battery cables. Align fender if necessary. Figure 8B-5.

E Series Fender and Wheelhouse Panel Removal

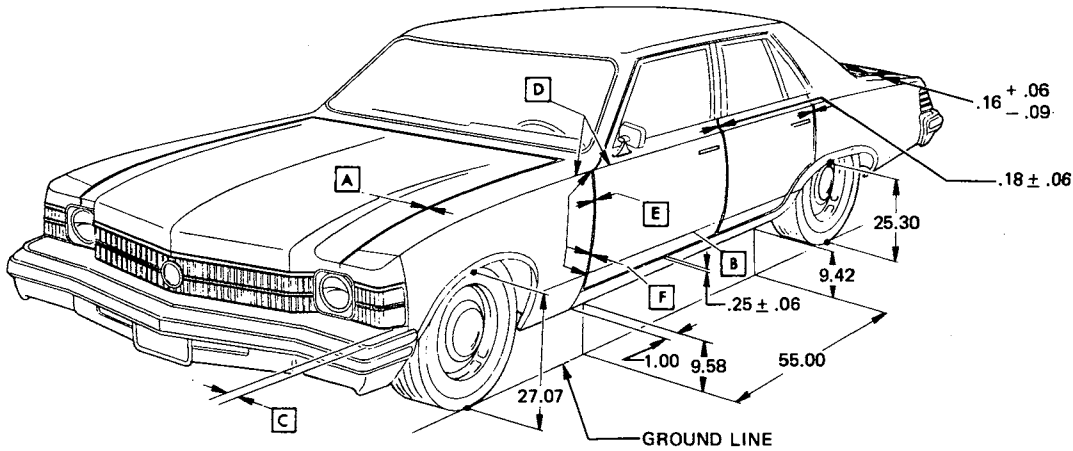
1. Disconnect battery cables and remove battery if battery is on same side as fender being removed.
2. Unfasten all electrical wires attached to fender.
3. Remove bolts securing battery base to radiator support and fender wheelhouse. Lift out battery base. See Figure 8B-29.
4. Remove fender to radiator support brace. Figure 8B-33.
5. Remove bolt securing bracket to front bumper outer extension.
6. Remove cornering lamp if so equipped.
7. Remove bolts securing lower portion of radiator support to lower front portion of fender. See Figure 8B-30.
8. Remove bolts securing front of fender to radiator support. See Figure 8B-30.
9. Remove screws securing fender lower front baffle. See Figure 8B-31.

10. Remove two hood hinge to fender bolts supporting hood as outlined in Hood Removal.
11. Remove bolts securing skirt to lower portion of cowl. See Figure 8B-29.
12. Remove rocker panel moulding.
13. Remove bolts securing lower rear edge of fender to rocker panel. See Figure 8B-32.
14. Remove bolt securing upper rear portion of fender to bracket at hinge pillar. It is suggested that bracket not be removed from pillar.
15. Remove bolts securing upper rear portion of fender to upper portion of cowl. See Figure 8B-32.
16. Remove bolts securing fender to upper tie bar.
17. Raise up and lift off fender and skirt.
18. Skirt can now be removed from fender by removing skirt to fender attaching bolts. See Figure 8B-30.

E Series Fender and Wheelhouse Panel Installation

1. Install skirt to fender, securing with bolts. See Figure 8B-30.
2. Install fender to upper tie bar and install bolts.
3. Install bolts, securing upper rear portion of fender to upper portion of cowl. See Figure 8B-32.
4. Install bolt, securing upper rear portion of fender to bracket at hinge pillar.
5. Install bolts, securing lower rear edge of fender to rocker panel. See Figure 8B-32.
6. Install rocker panel moulding.
7. Secure skirt to lower portion of cowl with bolts. See Figure 8B-29.
8. Install hood hinge to fender bolts supporting hood, as outlined in Hood Installation.
9. Install screws, securing fender lower front baffle. See Figure 8B-31.
10. Install bolts, securing front fender to radiator support. See Figure 8B-30.
11. Install bolts, securing lower portion of radiator support to lower front portion of fender.
12. Install cornering lamp, if so equipped.
13. Install bolt, securing bracket to front bumper outer extension.
14. Install fender to radiator support brace. Figure 8B-33.
15. Install battery base and install bolts, securing base to radiator support and fender skirt. See Figure 8B-29.
16. Fasten all electrical wires.
17. Connect battery cables.

- [A] .100 TO .200 MUST BE PARALLEL WITHIN .06.
- [B] LOWER CHARACTER LINE.
- [C] SPACE FRONT & REAR BUMPERS EQUALLY TO SHEET METAL - BOTH SIDES.
- [D] FENDER PEAK MUST BE FLUSH TO .060 HIGH ALIGNED WITH DOOR.
- [E] .23 ± .06 MUST BE PARALLEL WITHIN .06.
- [F] FENDER .040 IN 10.060 OUT - FROM DOOR AT TOP TO LOWER CHARACTER LINE.



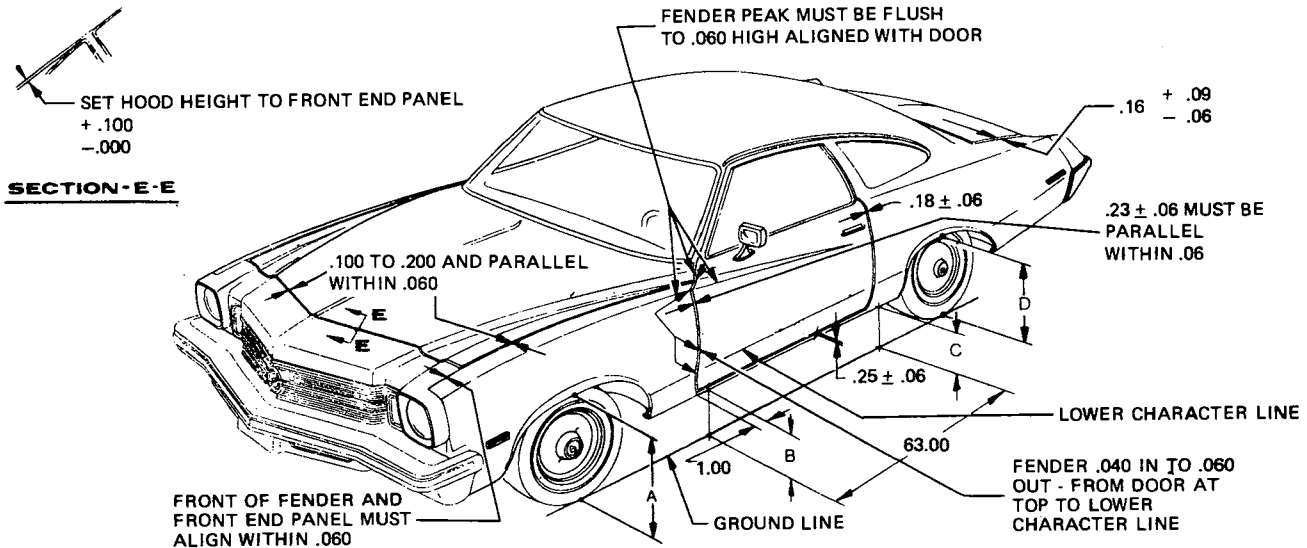
CURB DIMENSIONS SHOWN.

OVERALL LENGTH LESS BUMPER & RELATED ATTACHING PARTS.

COUPES & SEDANS 191.52.

5B8A10

Figure 8B-3 - X Series Sheet Metal Dimensions



BODY STYLES				
DIM.	CENTURY	CENTURY LUXUS	REGAL	WAGON
	CURB	CURB	CURB	CURB
A	27.70	27.70	27.70	27.67
B	10.20	10.20	10.20	10.49
C	10.09	10.09	10.09	10.63
D	25.36	25.36	25.36	26.05

DIMENSIONS DO NOT INCLUDE MOULDINGS

OVERALL LENGTHS LESS BUMPER & RELATED ATTACHING PARTS:

CENTURY COUPE	202.90
CENTURY SEDAN	206.90
REGAL COUPE	205.38
REGAL SEDAN	209.38
CENTURY WAGON	212.04

5B8A15

Figure 8B-4 A Series Sheet Metal Dimensions

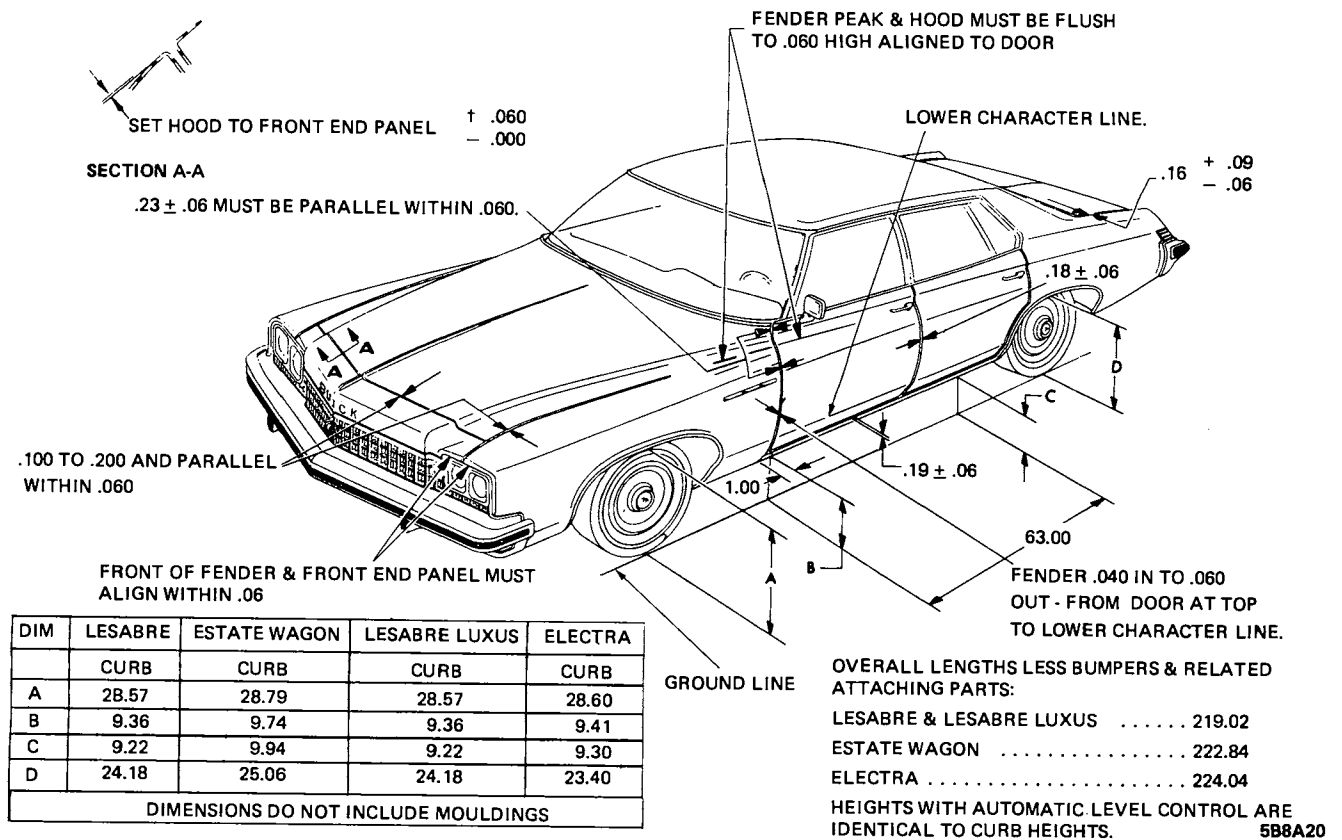


Figure 8B-5 B-C Series Sheet Metal Dimensions

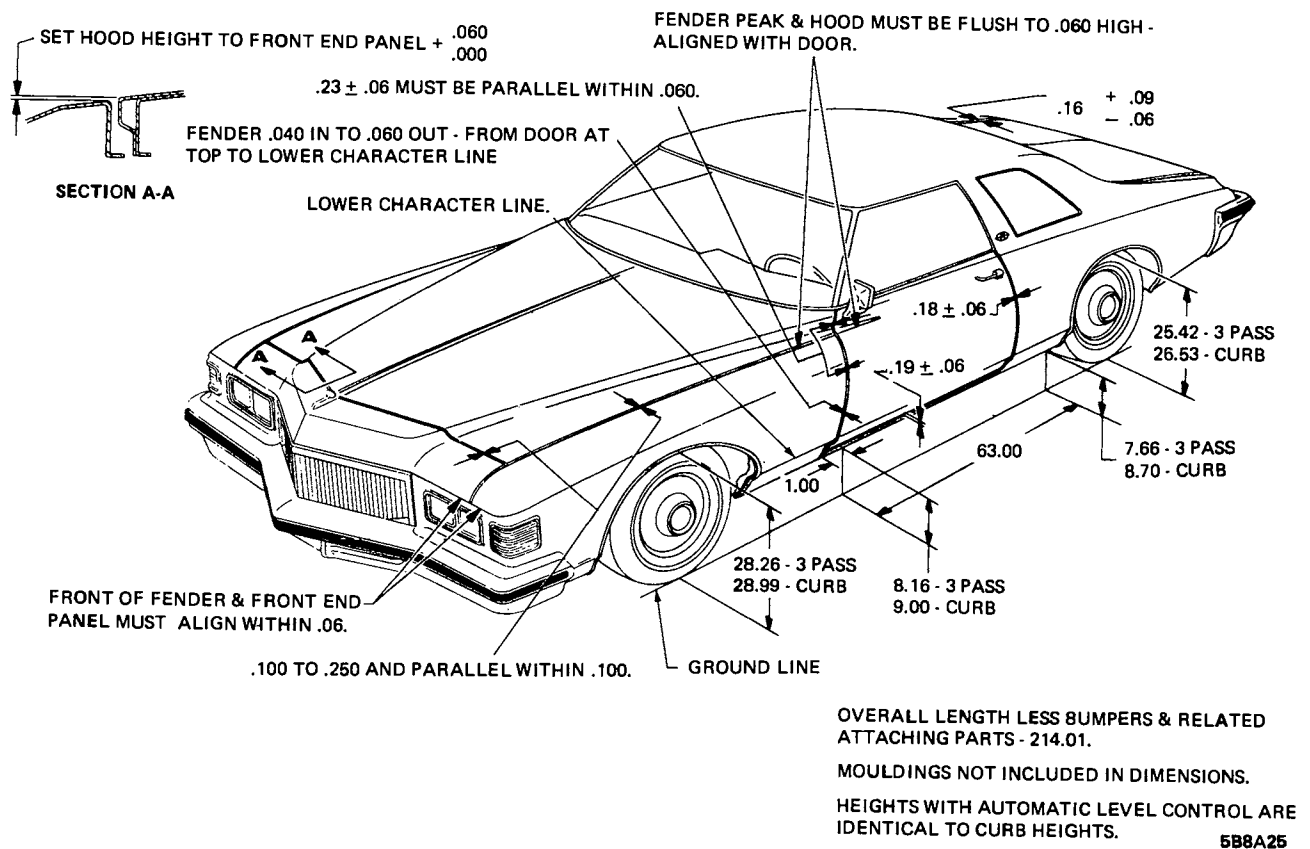
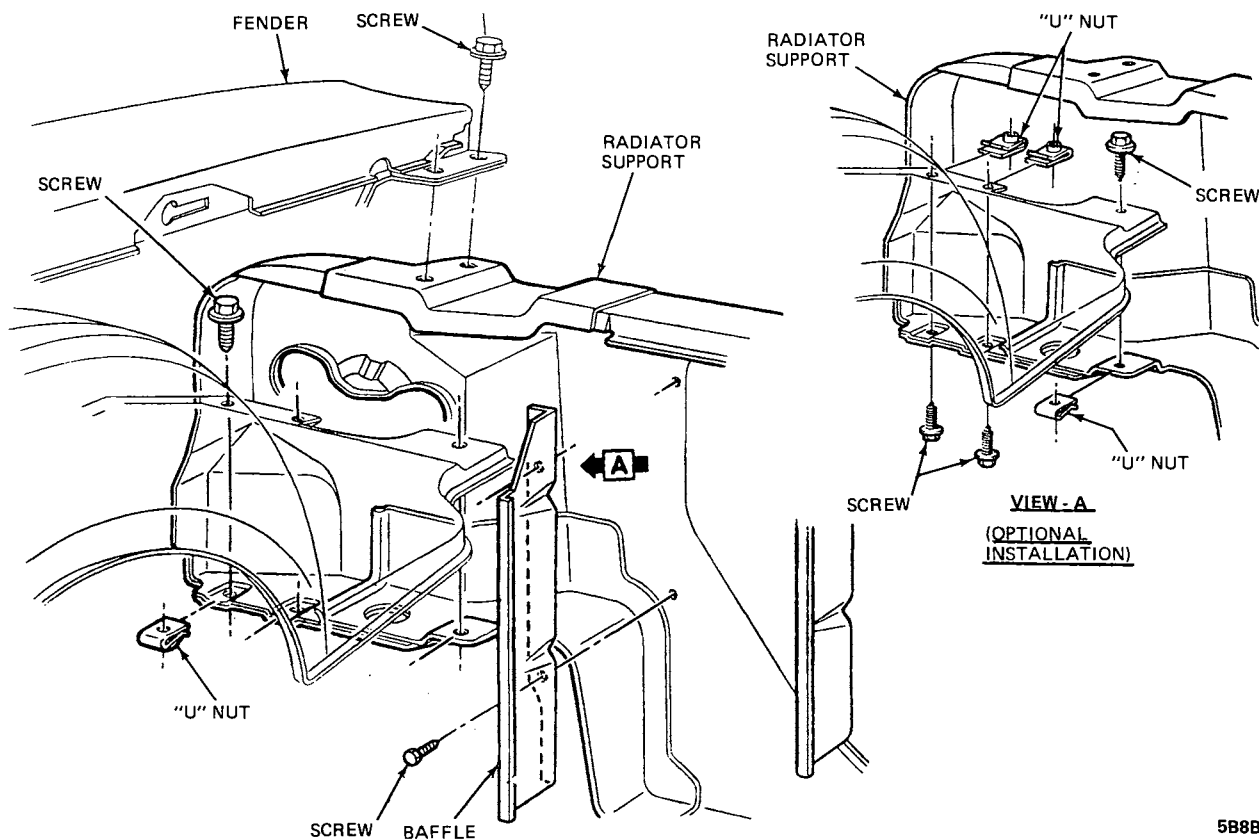
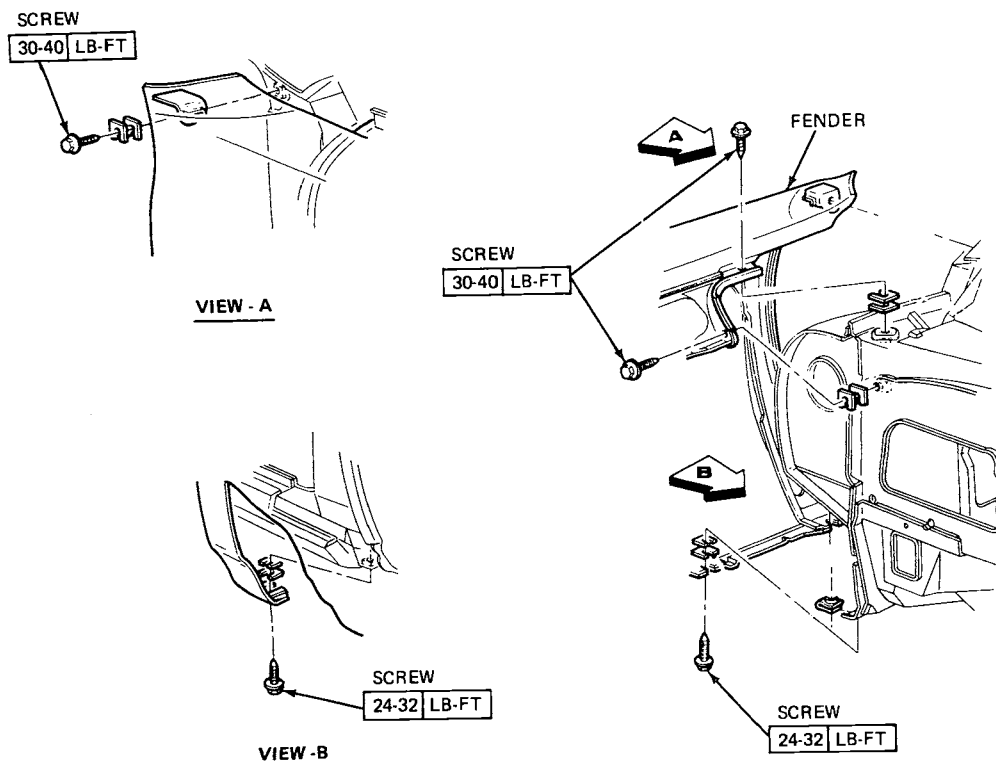


Figure 8B-6 E Series Sheet Metal Dimensions



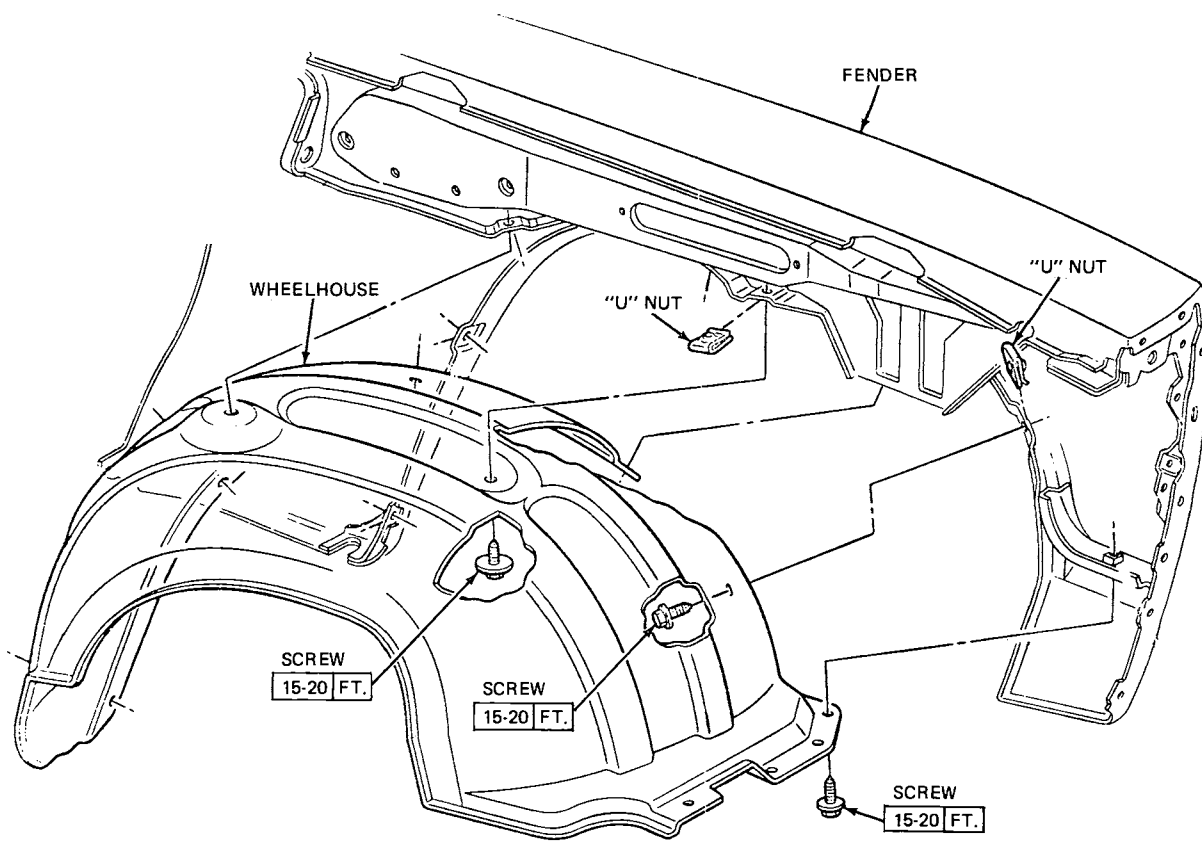
5B8B7

Figure 8B-7 X Series Fender to Radiator Support



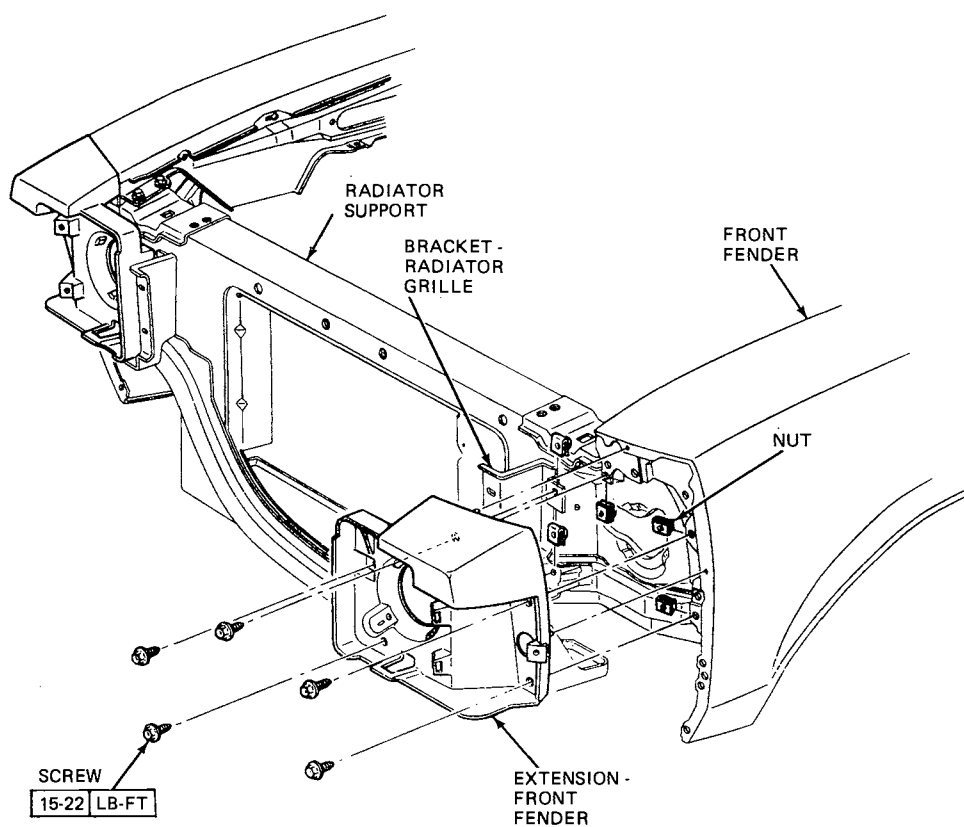
5B8B9

Figure 8B-9 X Series Fender to Body Attachment



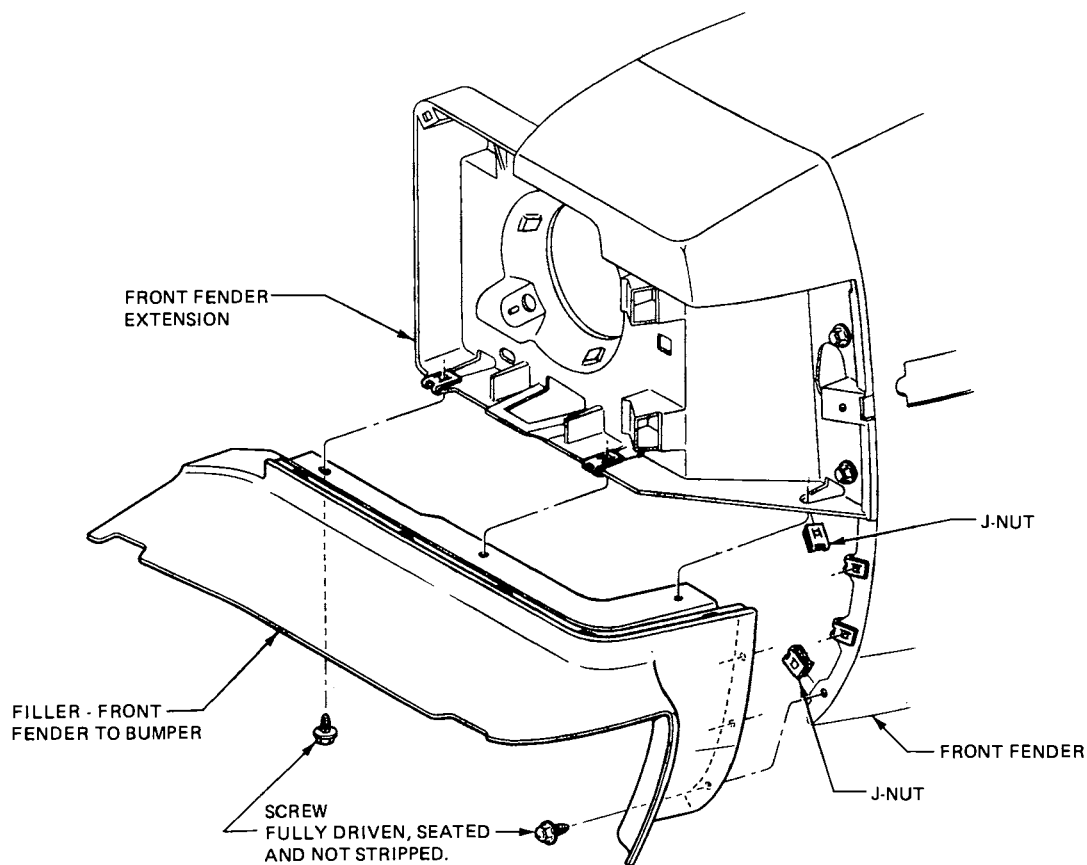
5B8B10

Figure 8B-10 X Series Wheelhouse to Fender



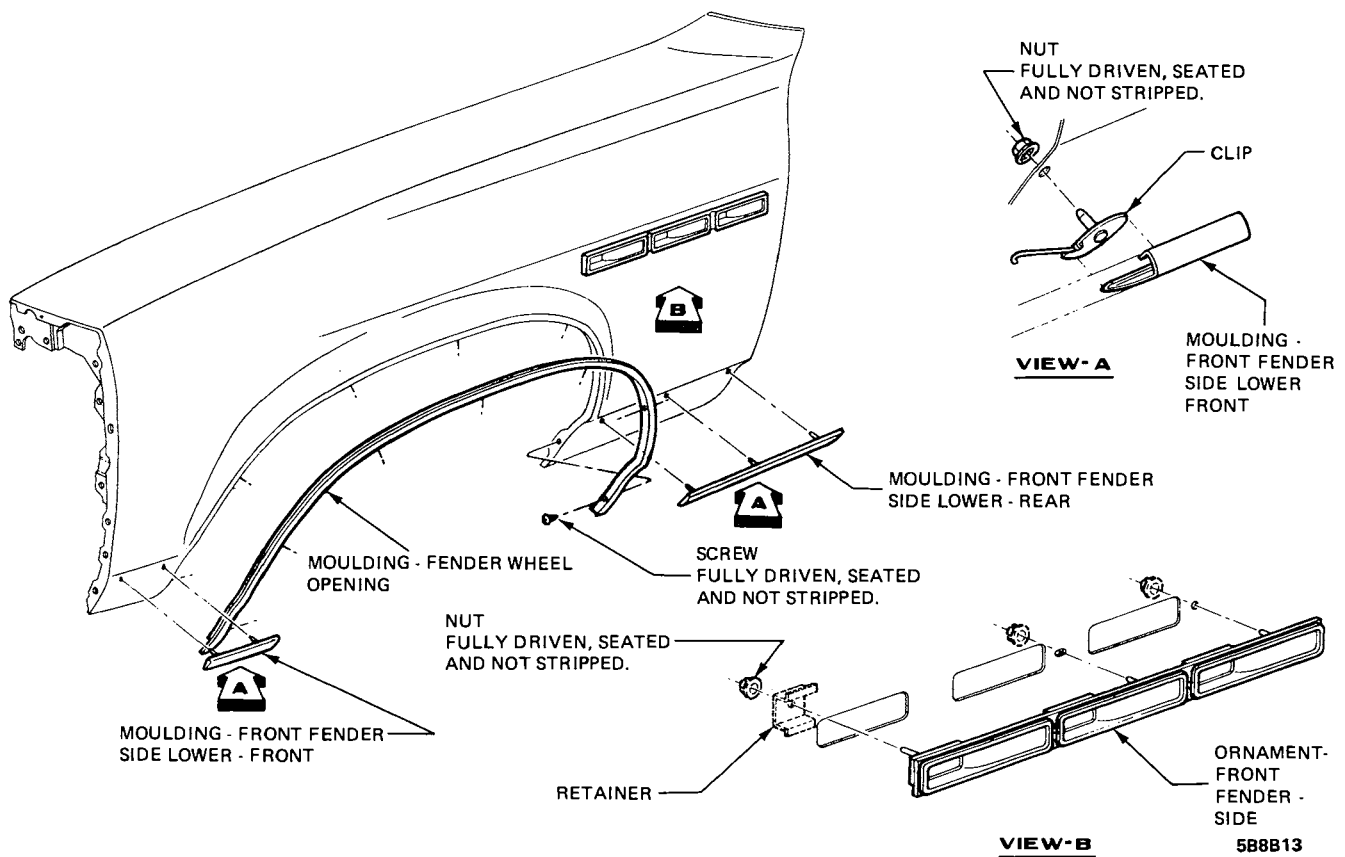
5B8B11

Figure 8B-11 X Series Front Fender Extension



5B8B12

Figure 8B-12 X Series Front Fender Filler



5B8B13

Figure 8B-13 X Series Fender Ornamentation

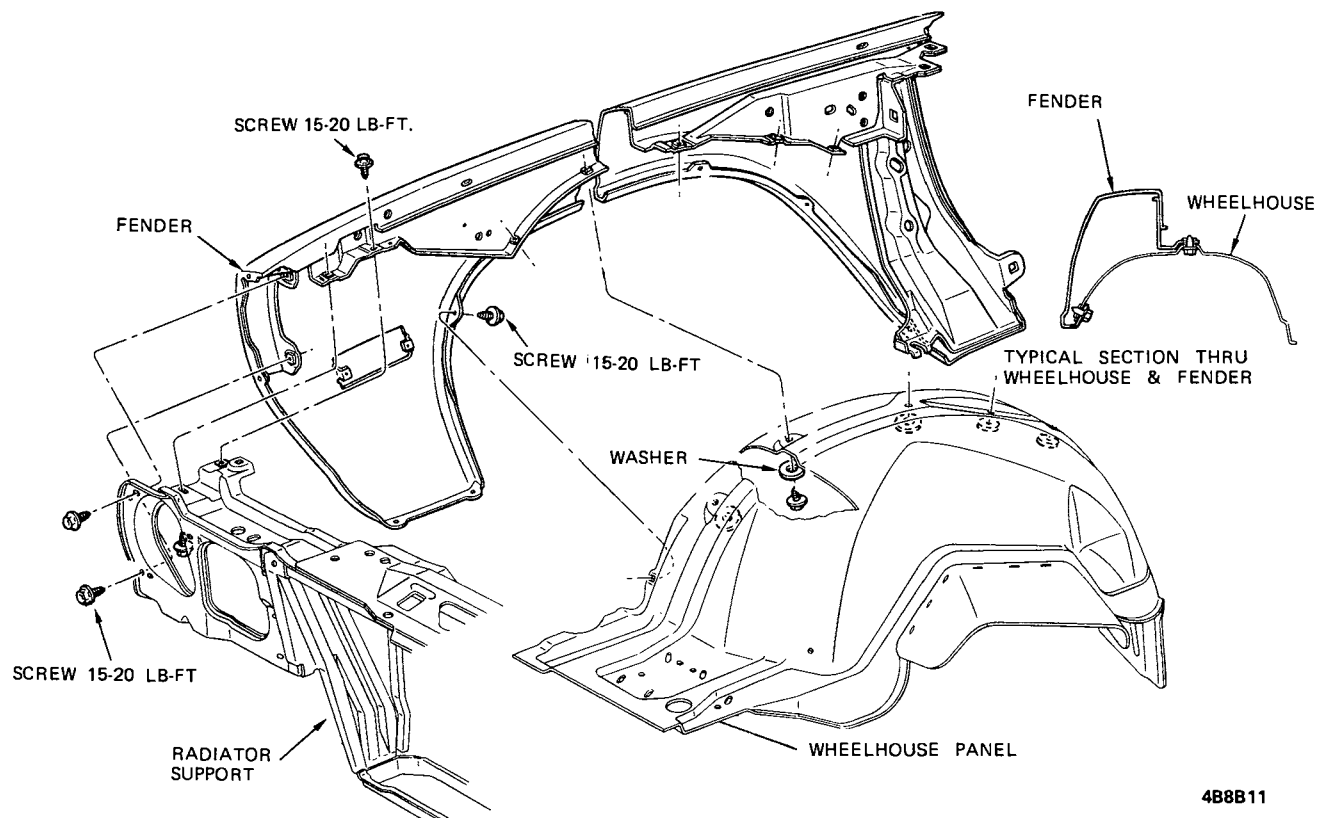


Figure 8B-14 A Series Fender to Radiator Support Mounting

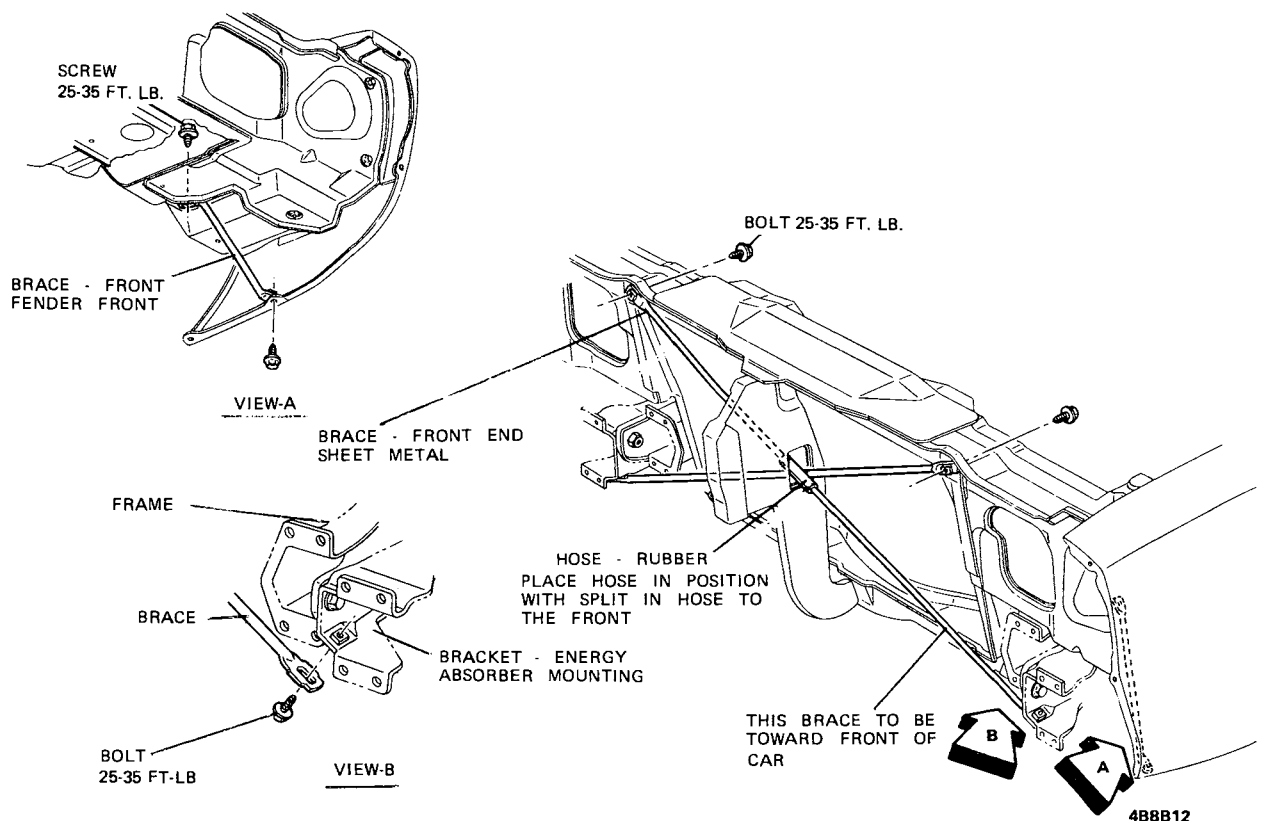


Figure 8B-15 A Series Fender Brace

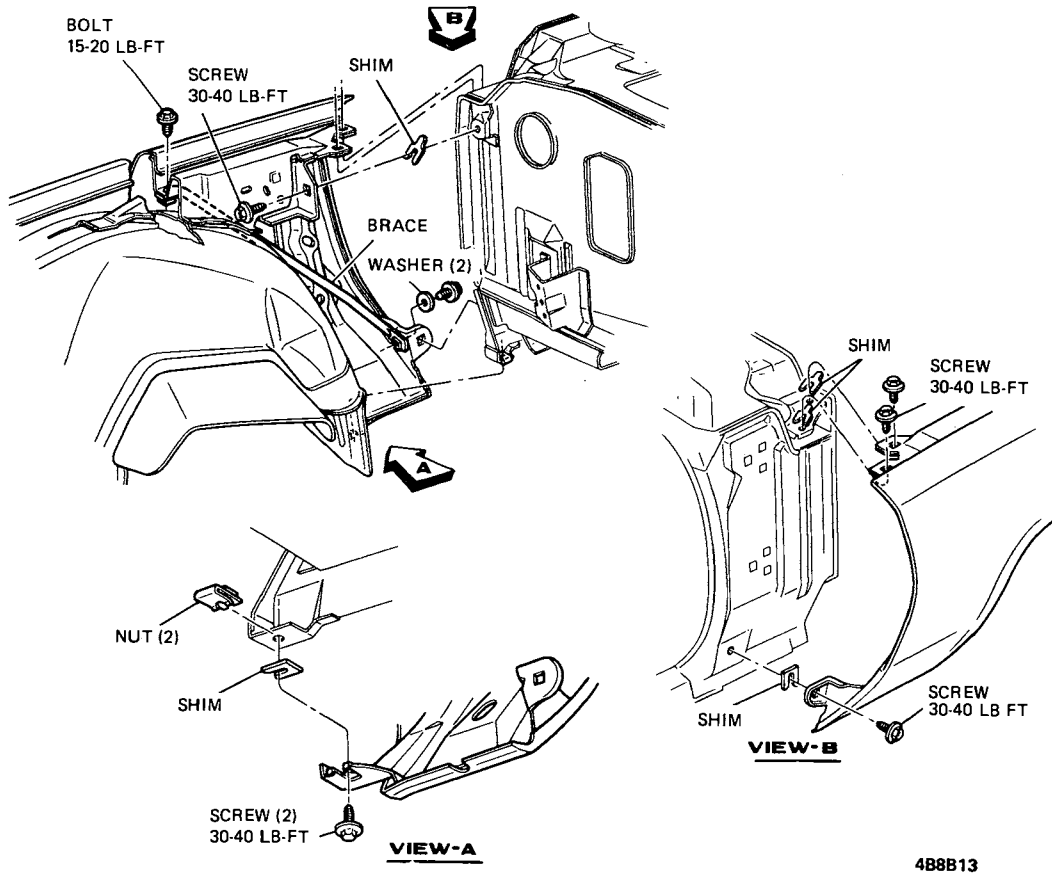
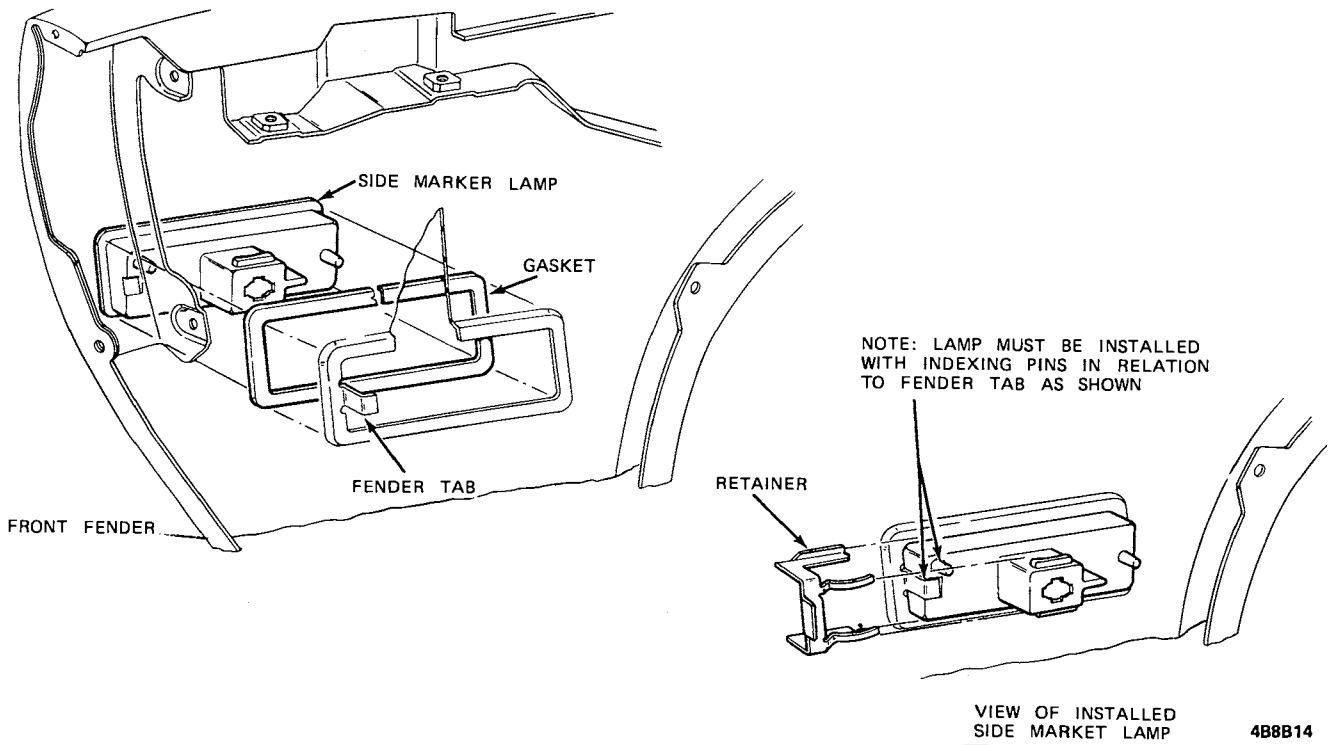


Figure 8B-16 A Series Fender to Body Mounting



@2-4.50 4B8B14

Figure 8B-17 A Series Side Marker Lamp

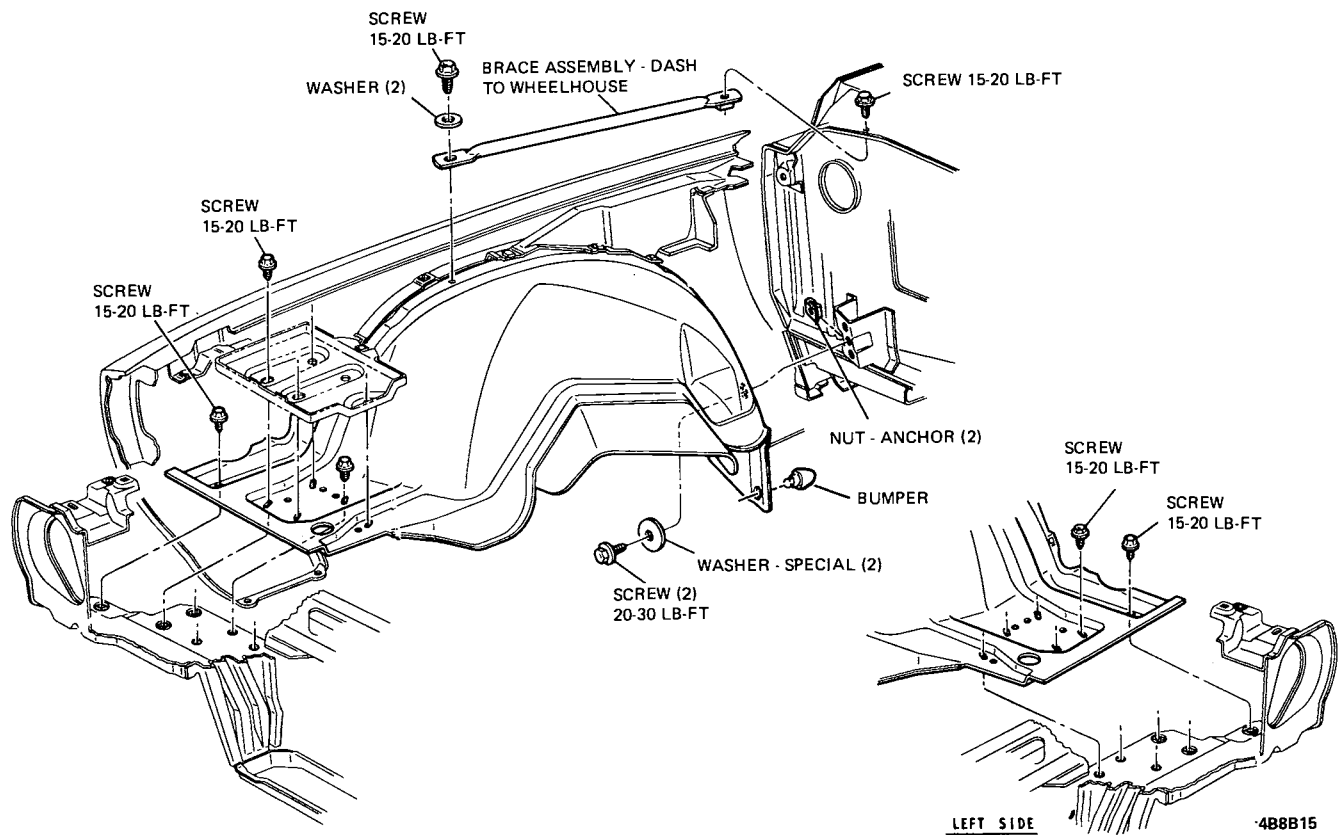


Figure 8B-18 A Series Wheelhouse Mounting

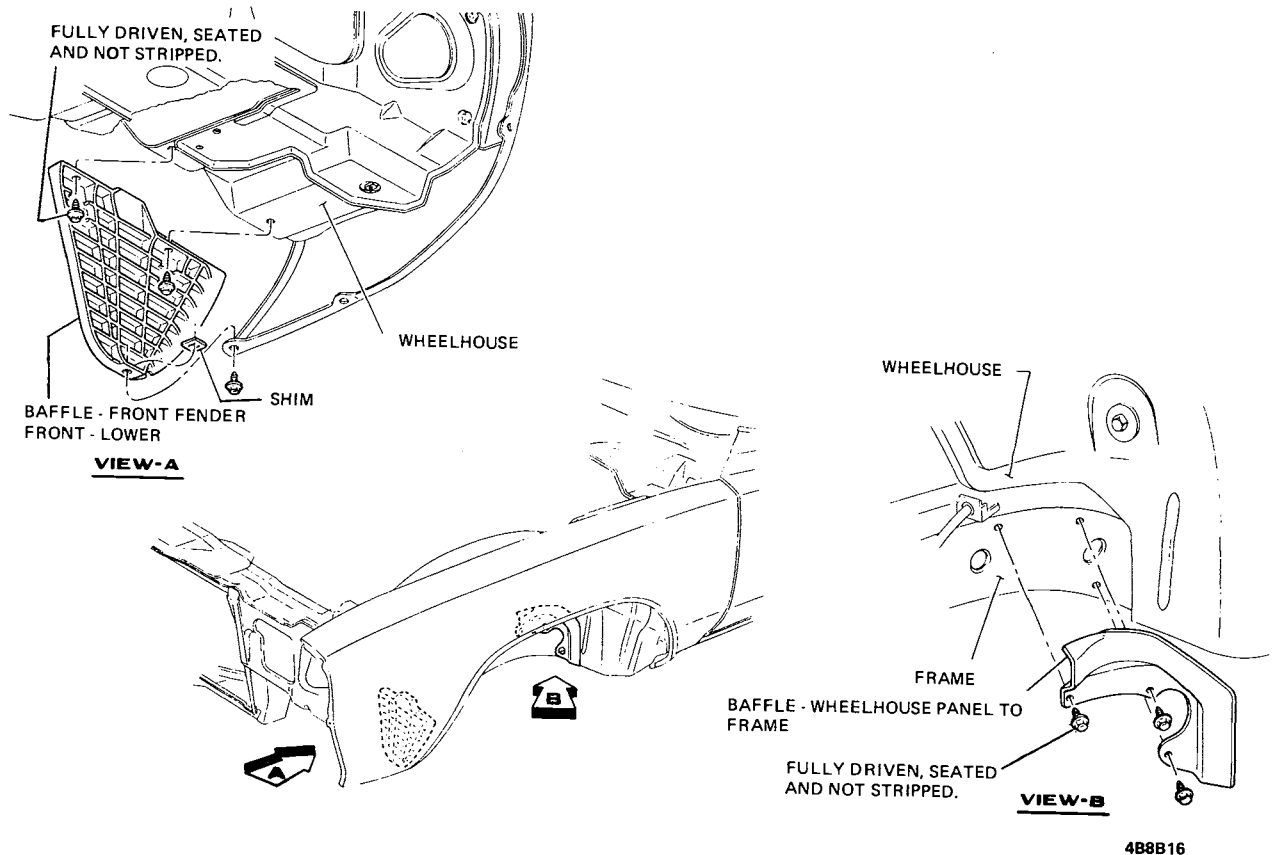
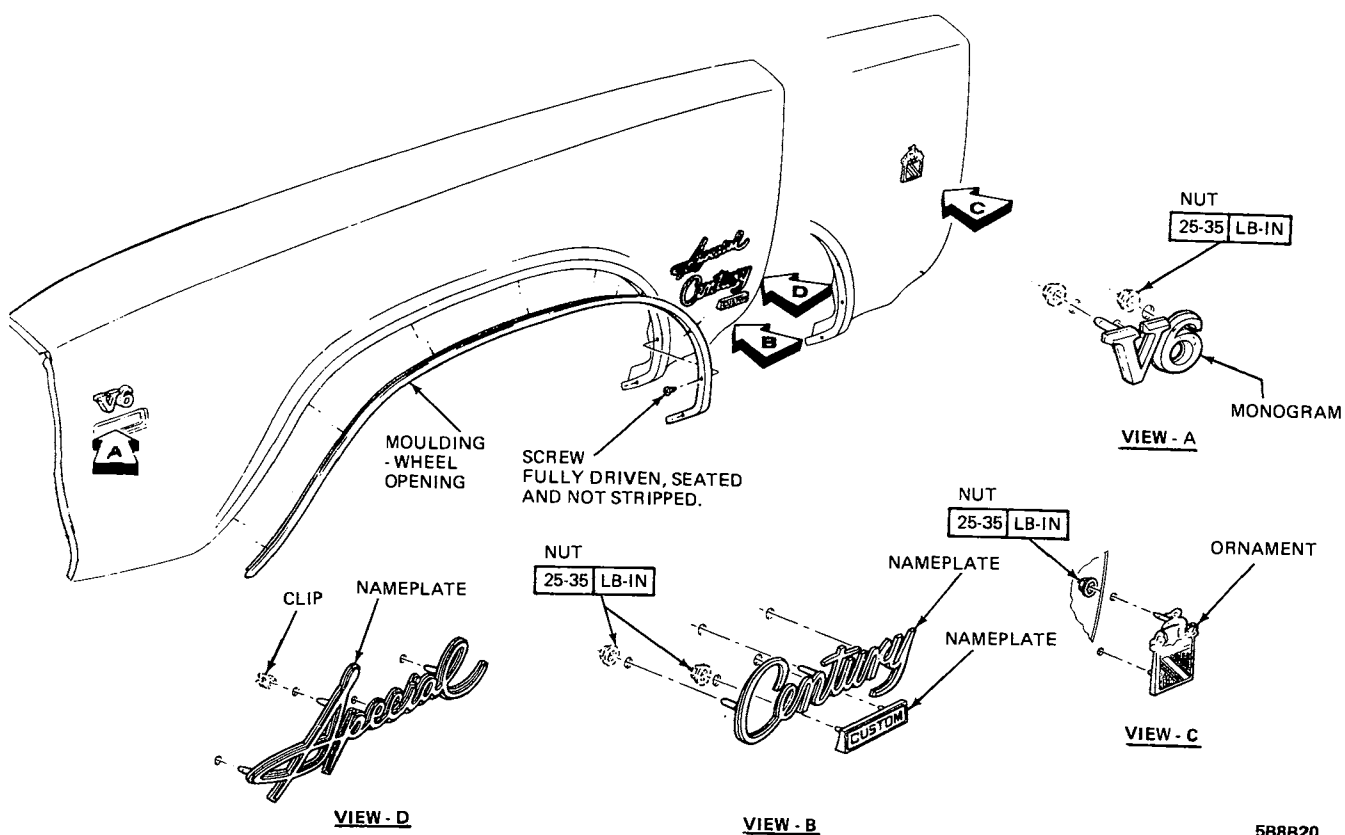
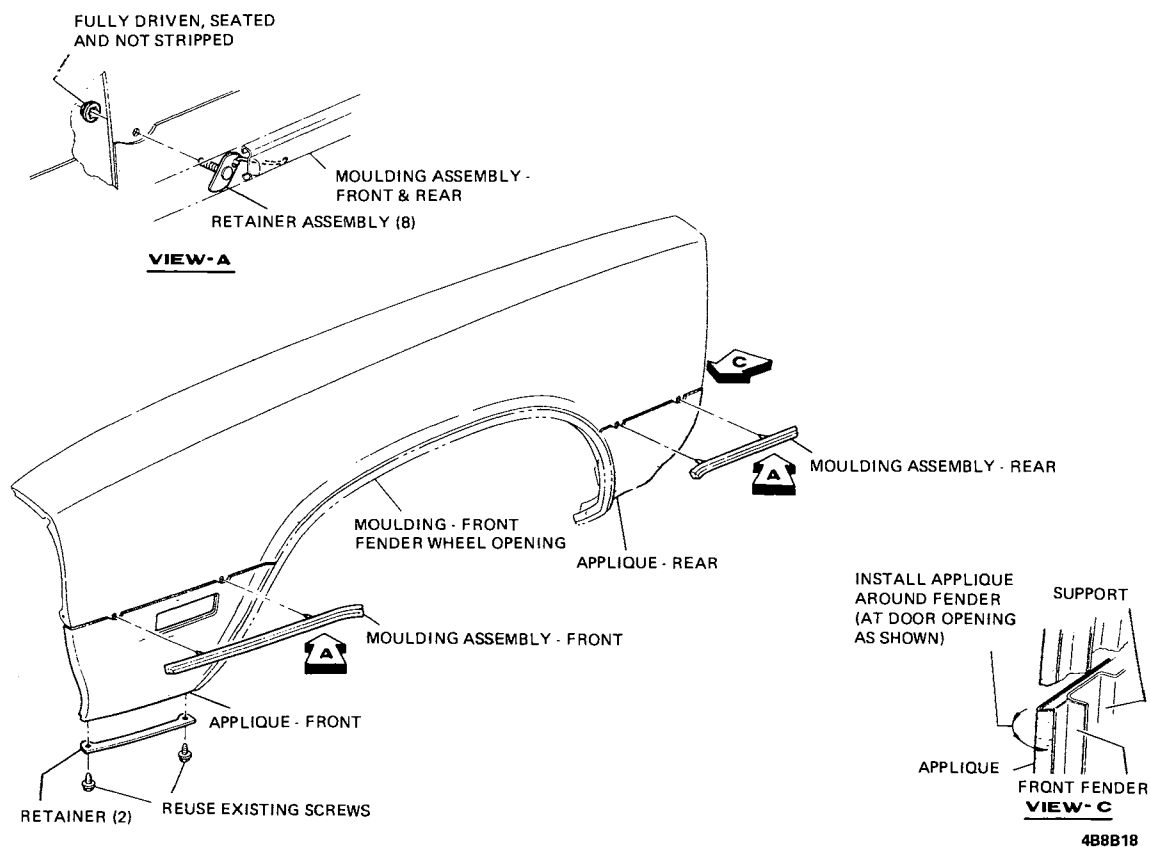


Figure 8B-19 A Series Front Baffle



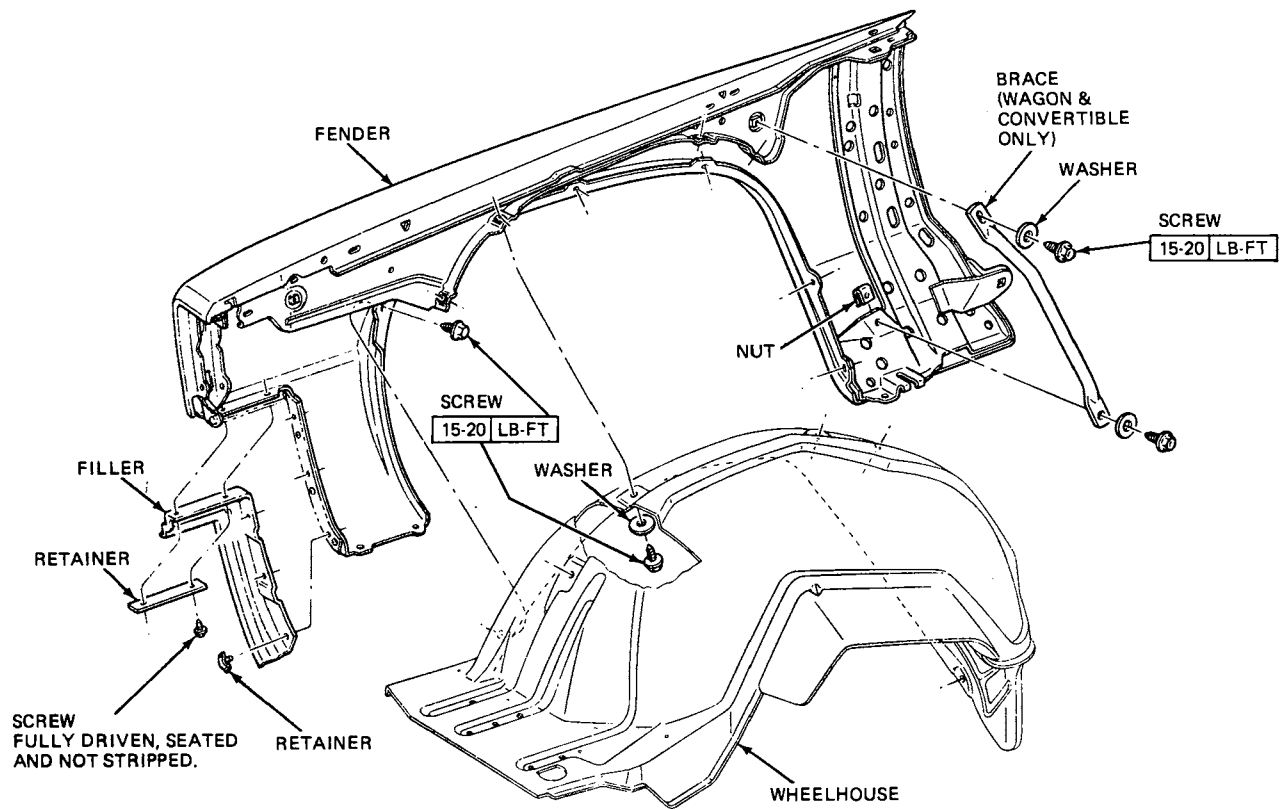
588B20

Figure 8B-20 A Series Fender Ornamentation



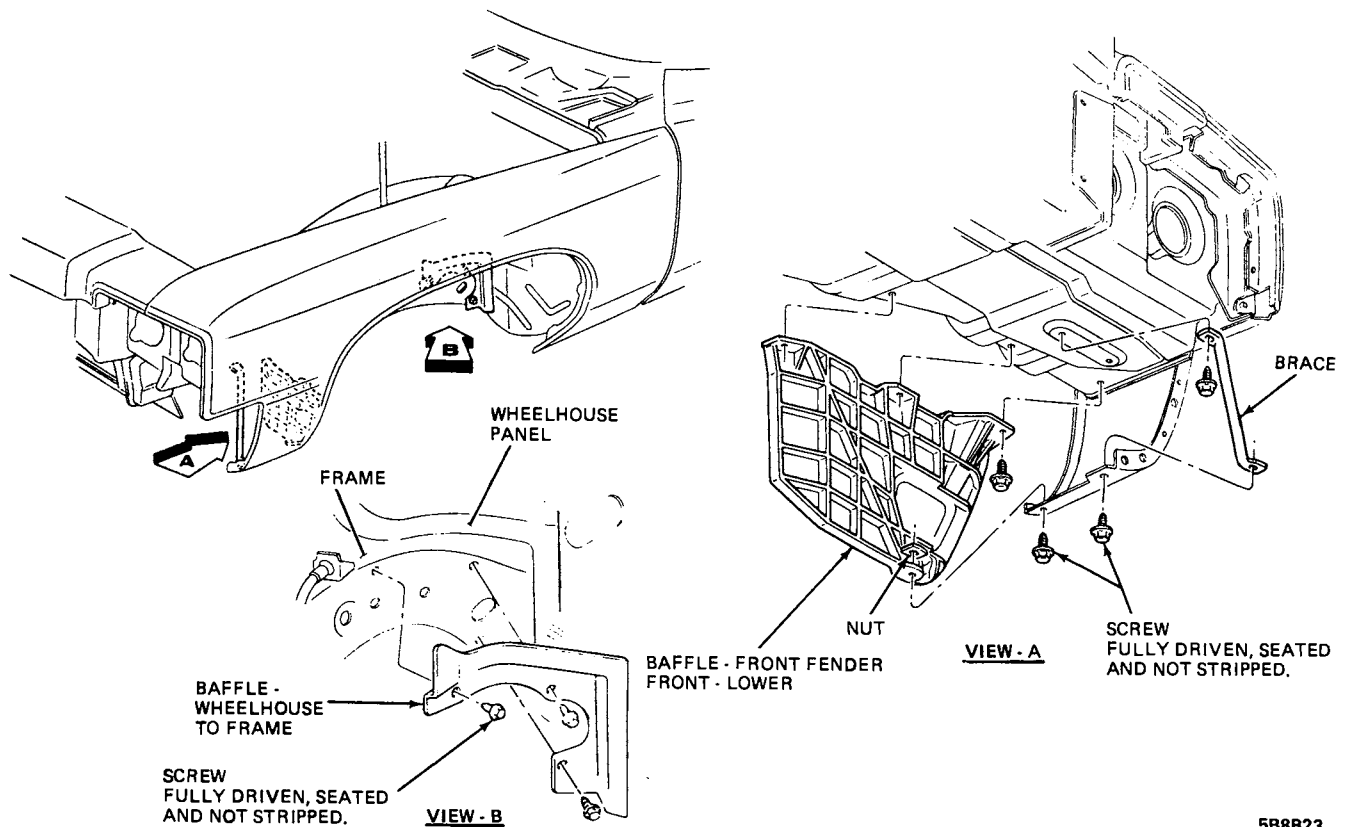
488B18

Figure 8B-21 A Series Wagon Fender Ornamentation



5B8B22

Figure 8B-22 B-C Series Fender to Wheelhouse Mounting



5B8B23

Figure 8B-23 B-C Series Baffle

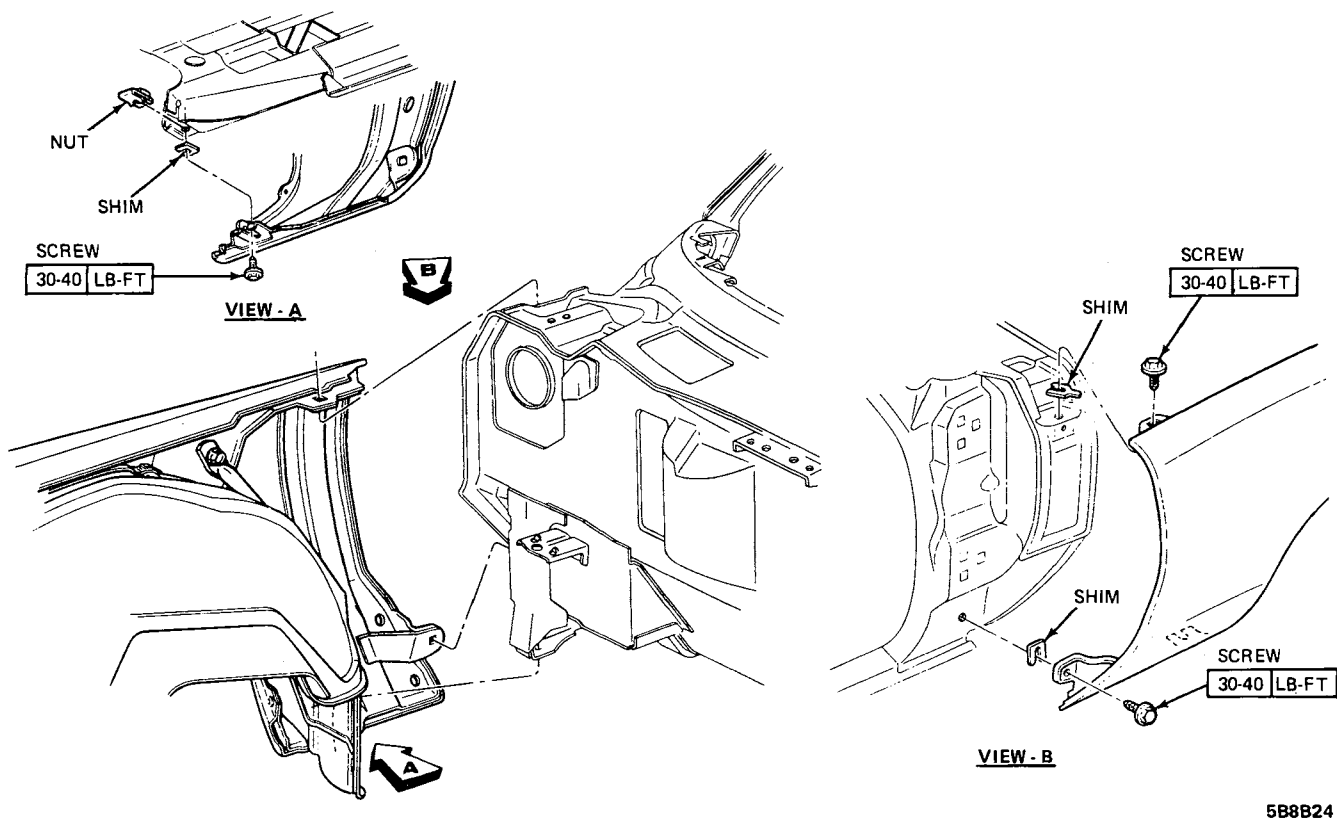


Figure 8B-24 B-C Series Fender to Body Mounting

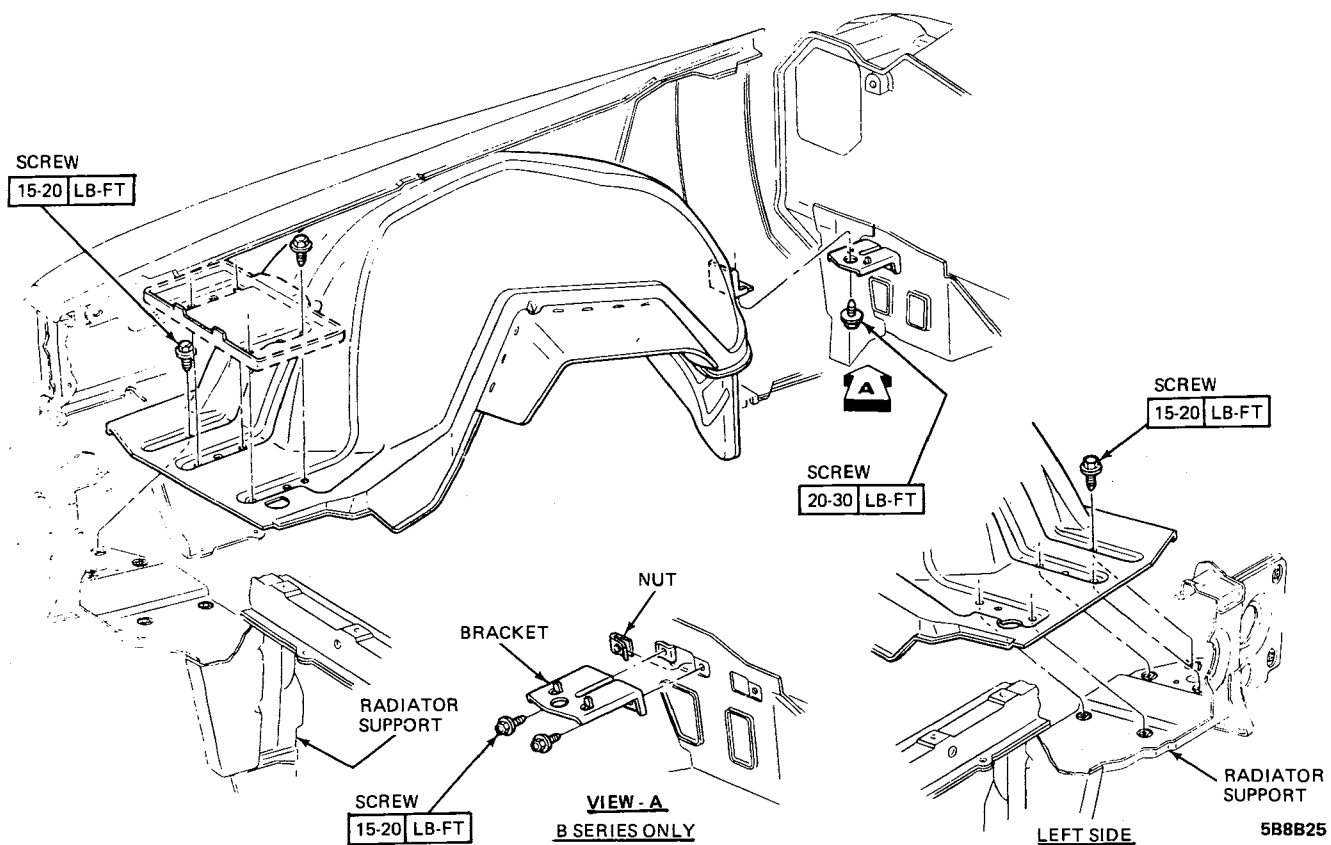


Figure 8B-25 B-C Series Wheelhouse Mounting

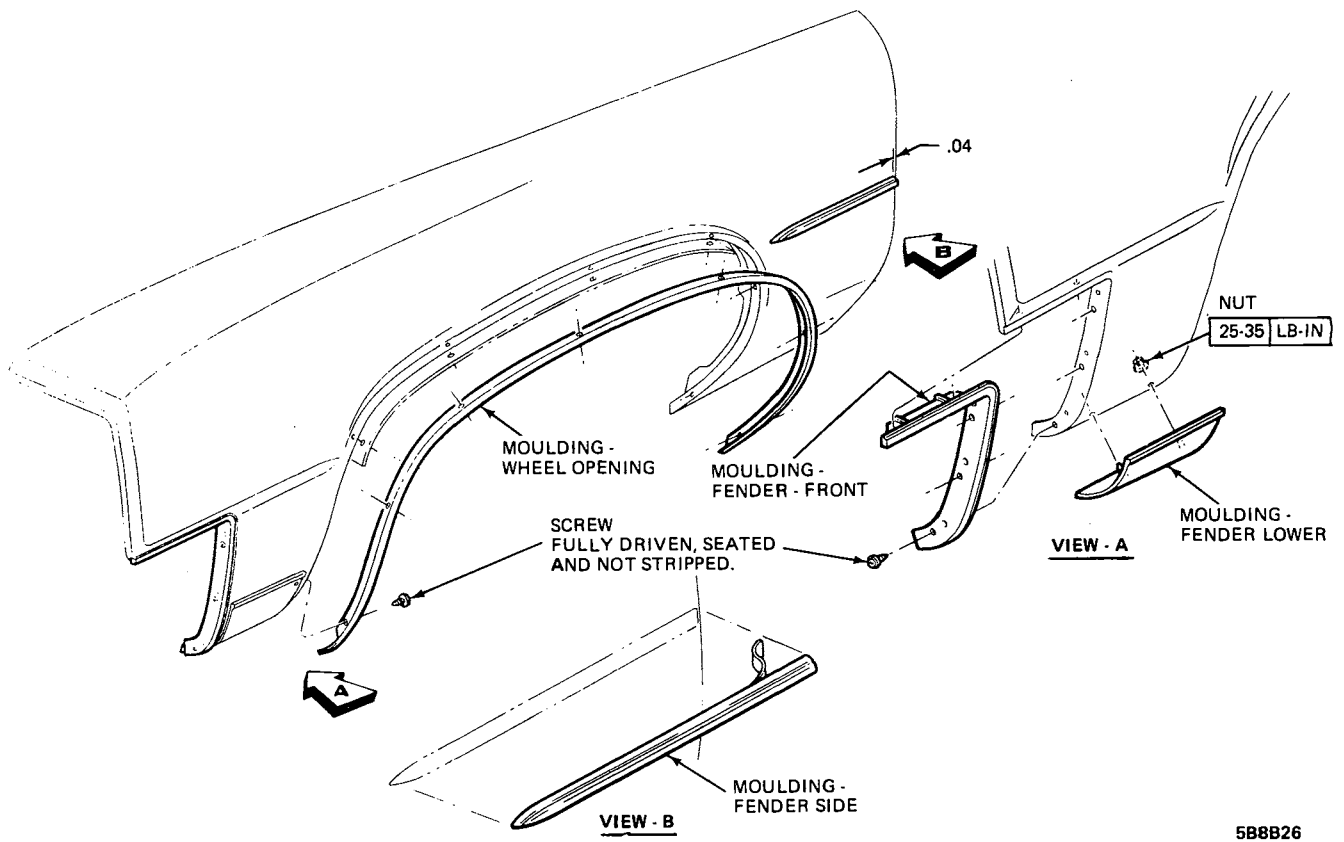


Figure 8B-26 B-C Series Fender Ornamentation

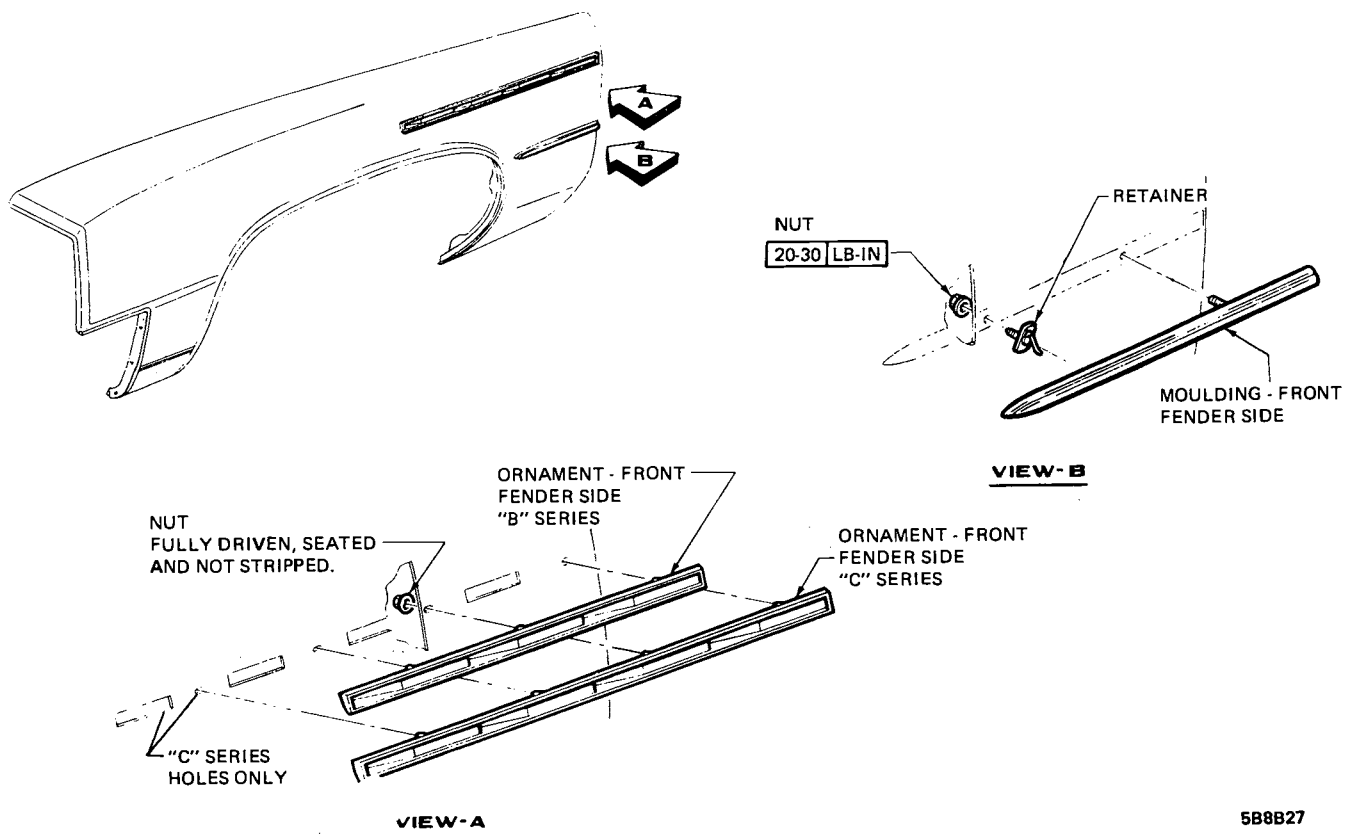
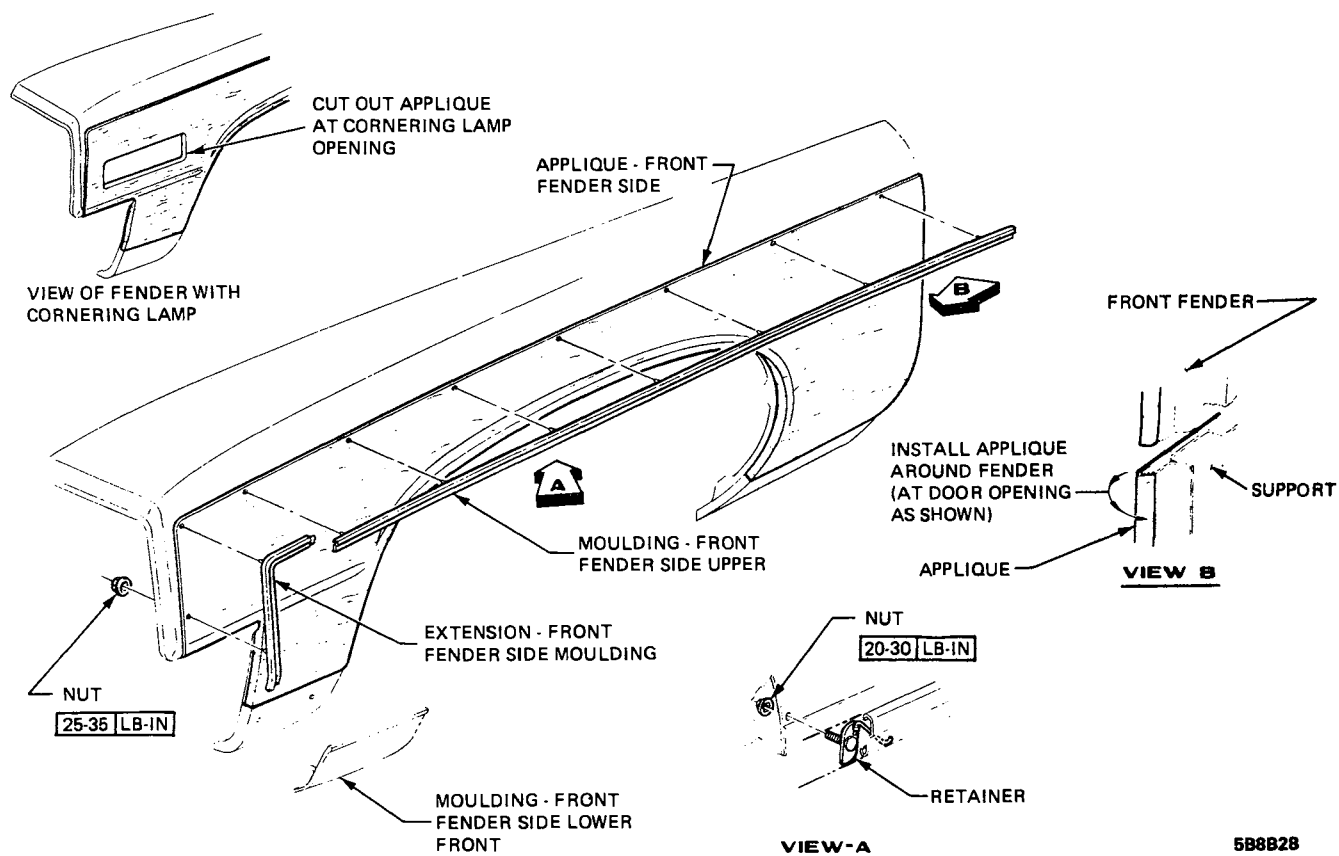
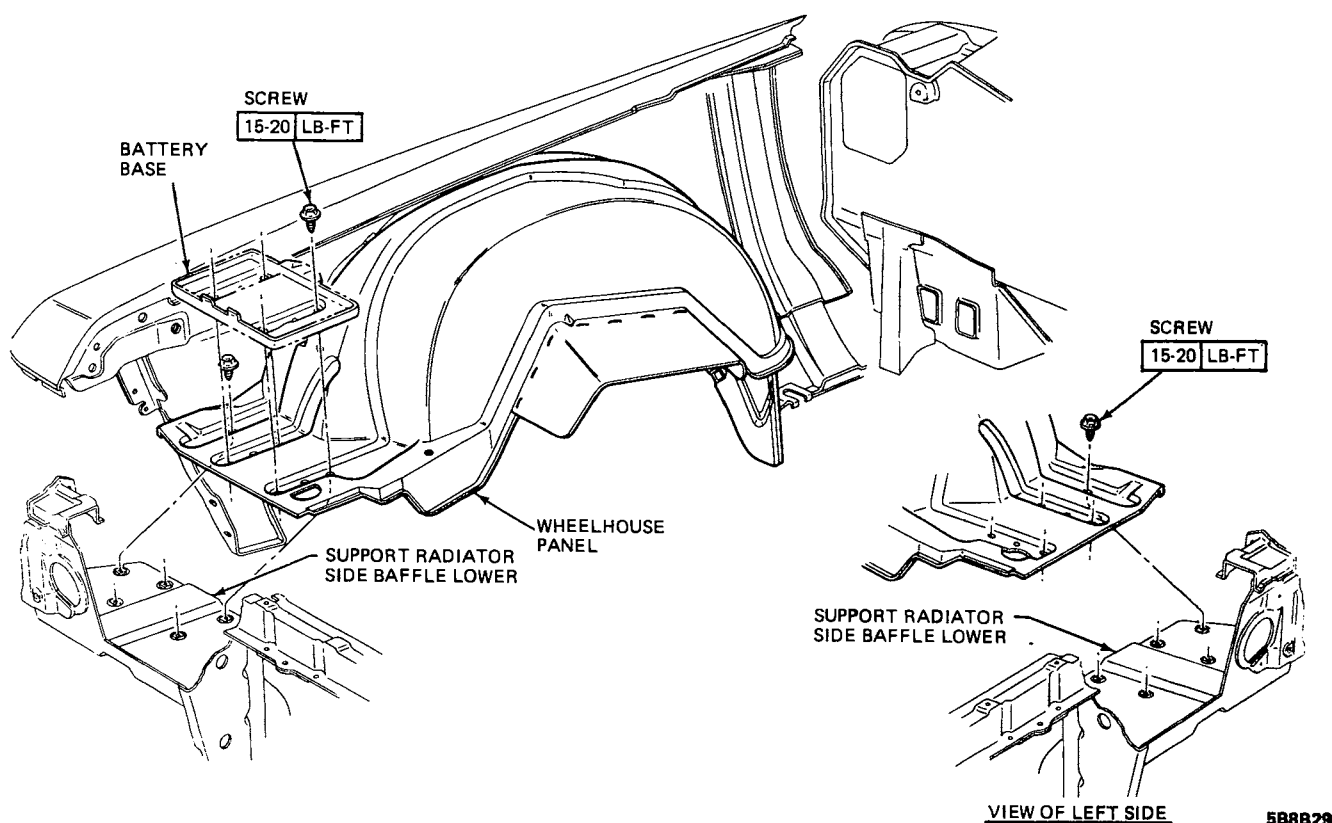


Figure 8B-27 B-C Series Fender Ornamentation



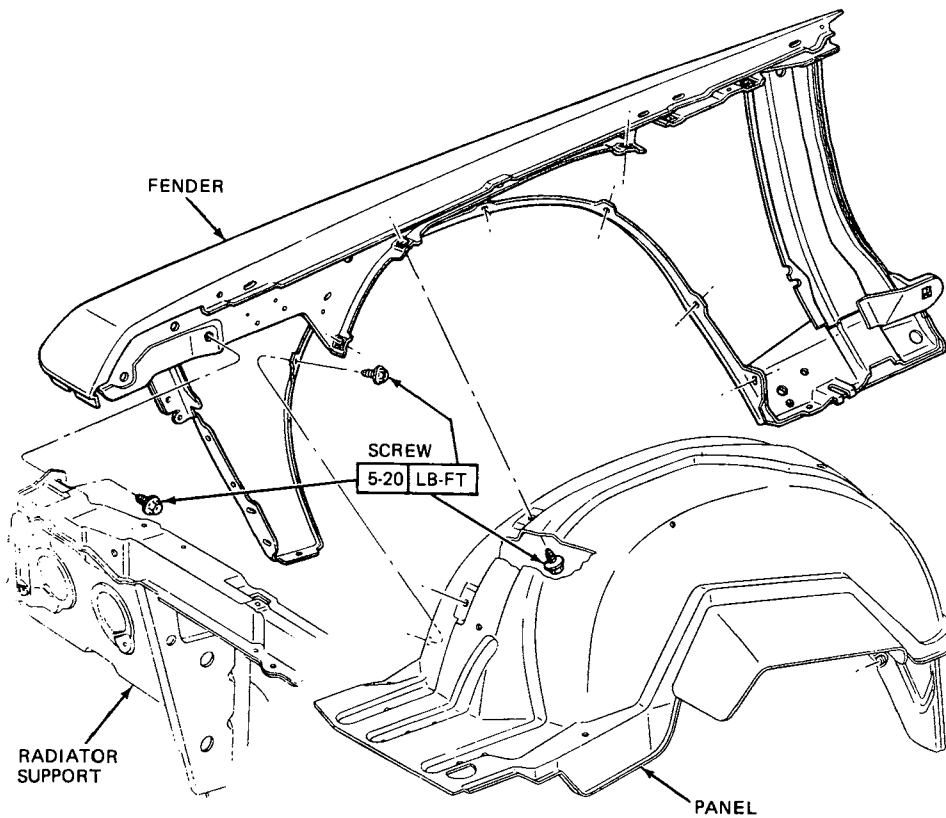
588828

Figure 8B-28 B Series Wagon Fender Ornamentation



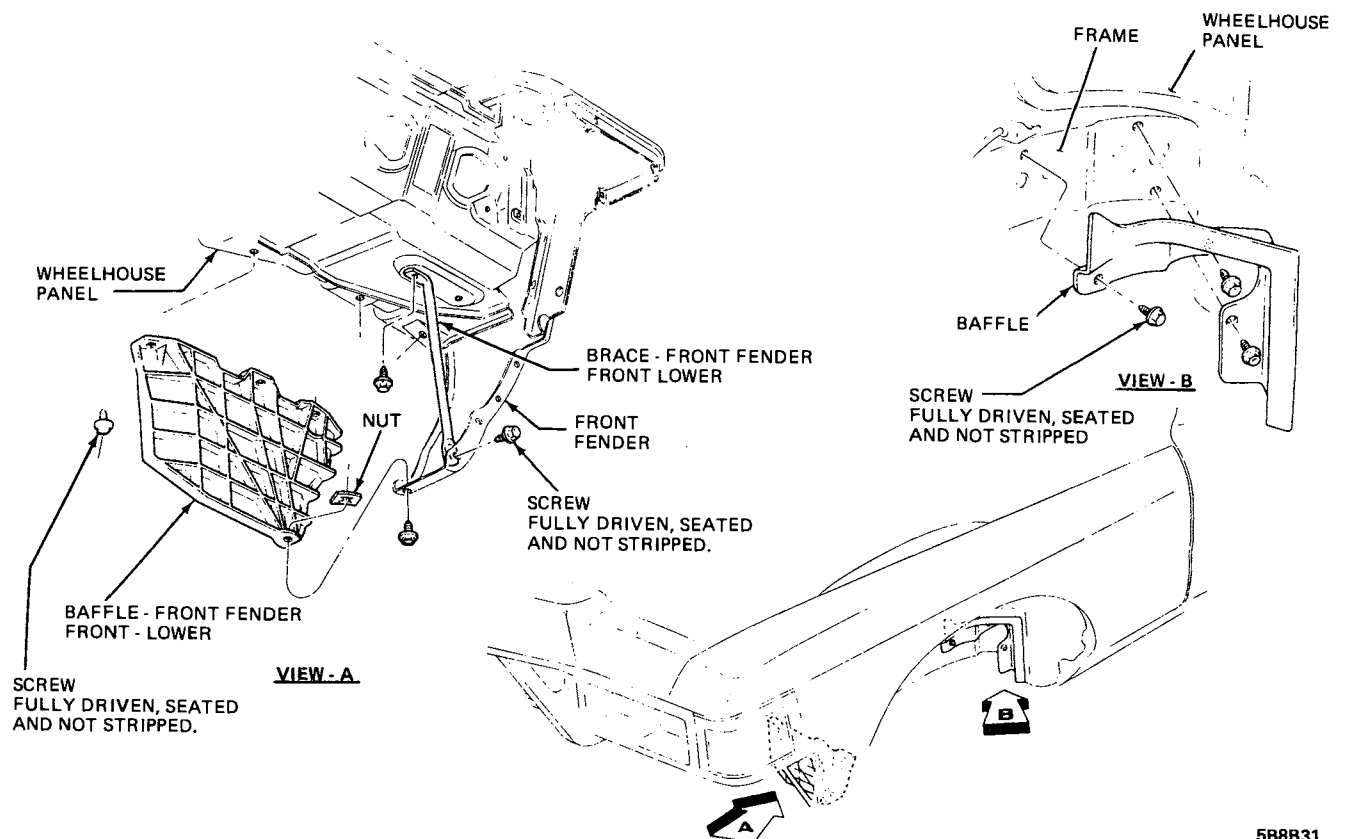
588829

Figure 8B-29 E Series Wheelhouse Mounting



5B8B30

Figure 8B-30 E Series Fender to Wheelhouse Mounting



5B8B31

Figure 8B-31 E Series Baffle

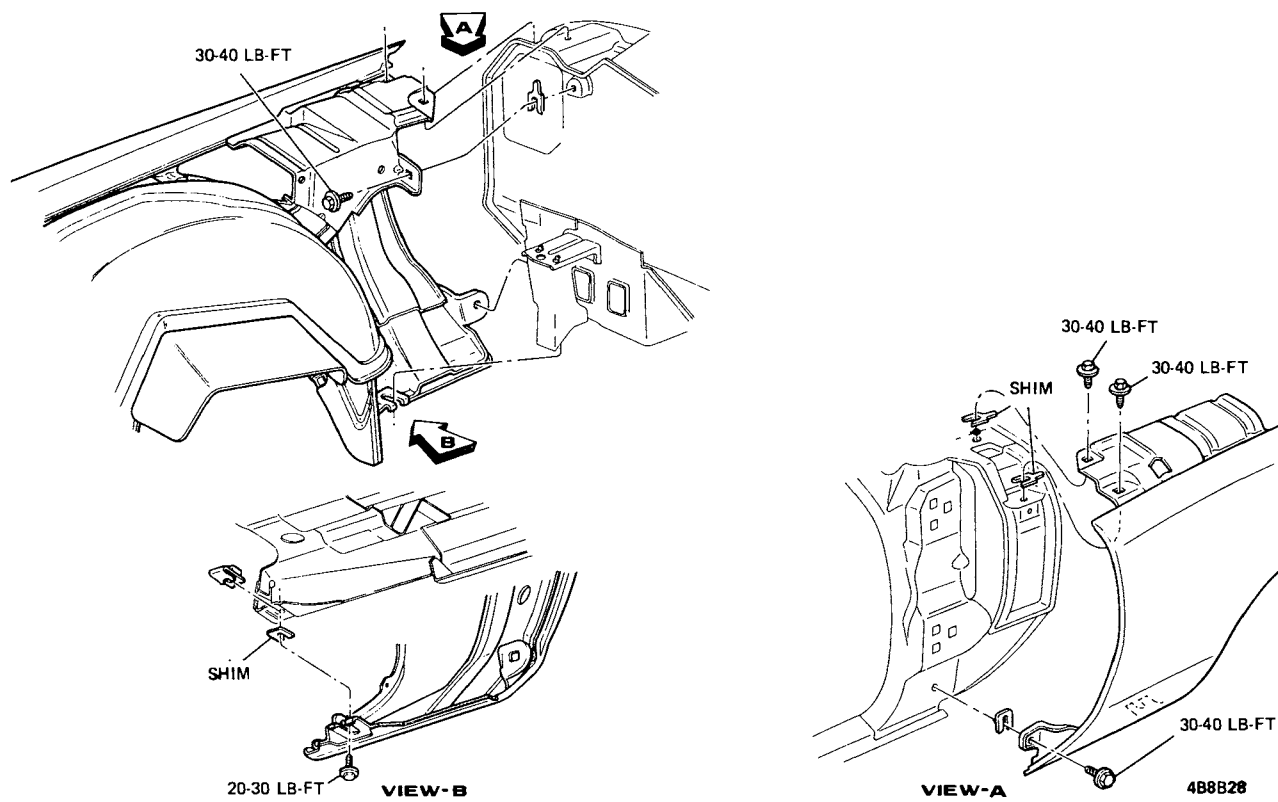
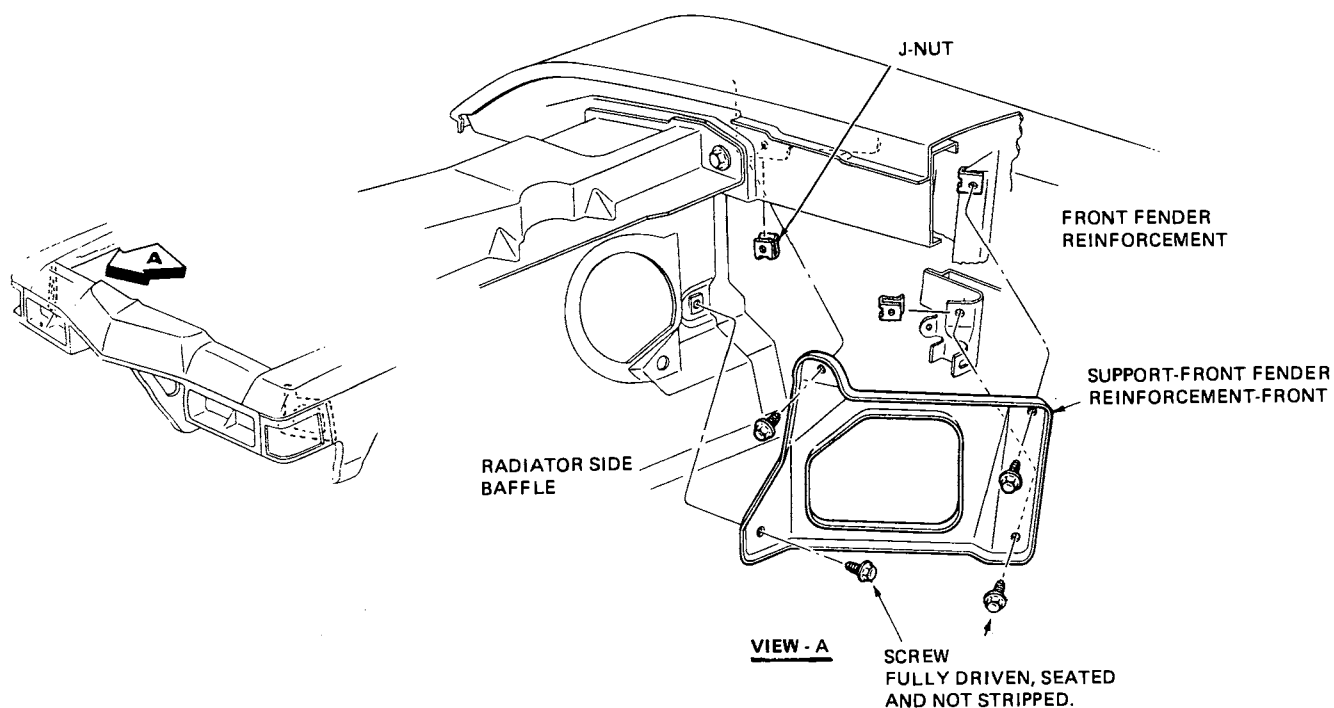


Figure 8B-32 E Series Fender to Body Installation



588B33

Figure 8A-33 E Series Fender to Radiator Support Brace

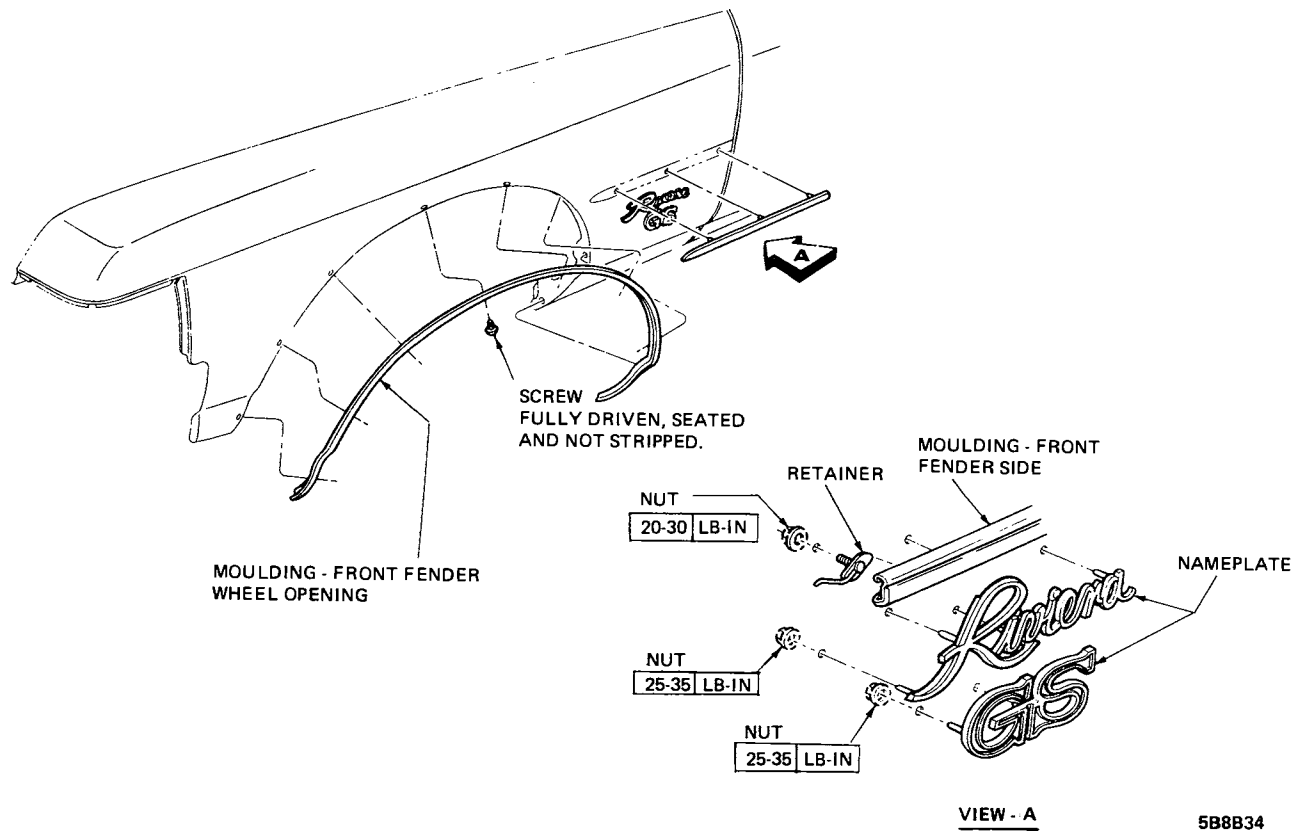


Figure 8B-34 E Series Fender Ornamentation