

# COOLING SYSTEM ALL SERIES

## CONTENTS

### DESCRIPTION AND OPERATION:

Cooling System .....	6B- 1
Automatic Fan Clutch .....	6B- 1
Radiator Cap .....	6B- 2
Water Pump.....	6B- 2

### DIAGNOSIS:

Cooling System .....	6B- 2
Fan Clutch Diagnosis .....	6B- 3

### MAINTENANCE AND ADJUSTMENTS:

Cooling System Service .....	6B- 6
Fan Belt Adjustment and Replacement .....	6B-12
Radiator Thermostat Inspection and Test.....	6B-12

### MAJOR REPAIR:

Water Pump.....	6B-12
Fan Shroud .....	6B-13
Radiator .....	6B-13

### SPECIFICATIONS:

Bolt Torque Specifications .....	6B-13
General Specifications .....	6B-14
Cooling System Capacities .....	6B-14
Cooling System Design Levels .....	6B-15

## DESCRIPTION AND OPERATION

### COOLING SYSTEM

The engine cooling system is the semi-closed pressure type, with thermostatic coolant temperature control and water pump circulation. In such a system, coolant is checked and added to a separate reservoir and not at the radiator. It should be noted, however, that if a quantity of coolant is needed because of a leak, repair, or for complete replacement, the coolant should be added directly to the radiator to insure that the system is filled.

The coolant reservoir is built into the fan shroud (except H and X Series). See illustrations at the end of this section. As the car is driven, the coolant is heated and expands. The portion of the fluid displaced by this expansion flows from the radiator into the reservoir. When the car is stopped and the coolant cools and contracts, the displaced coolant is drawn back into the radiator by vacuum. Thus, the radiator is kept filled with coolant to the desired level at all times, resulting in increased cooling efficiency.

A single contact temperature sensitive switch is located in the intake manifold. Engine coolant temperature above 253° causes the set of contacts to close and light a red signal on the instrument panel.

A Harrison cross flow type radiator core made of brass and copper is used on all models. The outlet radiator tank houses the transmission oil cooler.

**WARNING: A BENT OR DAMAGED FAN OR FAN CLUTCH MUST ALWAYS BE REPLACED AND REPAIR NOT ATTEMPTED. THIS IS ESSENTIAL TO MAINTAIN BALANCE AND DURABILITY.**

### Automatic Fan Clutch

The automatic fan clutch has two modes of operation, the engaged mode and the disengaged mode. The disengaged mode (engine cold or high-speed driving) occurs when the silicone fluid is held in the reservoir area of the fan clutch. As the temperature of the engine rises so does the temperature of the bimetallic coil. This bimetallic coil is connected to the arm shaft in such a way that as the temperature rises, the shaft moves the arm, exposing an opening in the pump plate. See Figure 6B-2. This opening allows the silicone fluid to flow from the reservoir into the working chamber of the automatic fan clutch. The silicone fluid is kept circulating through the fan clutch by wipers

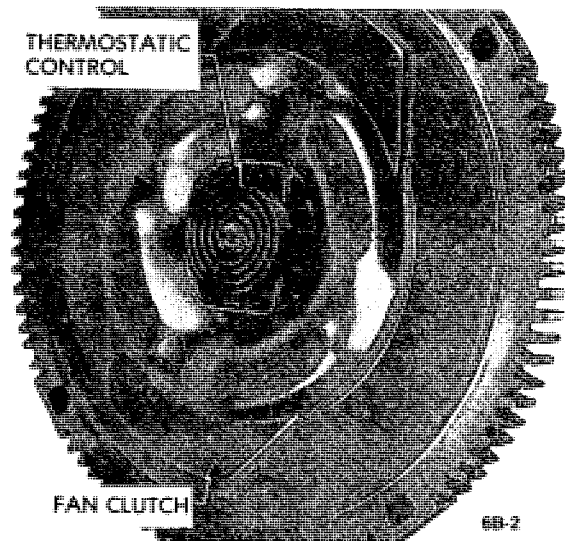


Figure 6B-1 - Fan Clutch

located on the pump plate. A hole is located in front of each wiper. The speed differential between the clutch plate and the pump plate develops high pressure areas in front of the wipers, thus the fluid is forced back into the reservoir. But, as the temperature rises, the arm uncovers more of the large opening and allows more of the silicone fluid to re-enter the working chamber. The automatic fan clutch becomes fully engaged when the silicone fluid, circulating between the working chamber and the reservoir, reaches a sufficient level in the working chamber to completely fill the grooves in the clutch body and clutch plate. The resistance of the silicone fluid to the shearing action, caused by the speed differential between the grooves, transmits torque to the clutch body. The reverse situation occurs when the temperature drops. The arm slowly closes off the return hole, thus blocking the fluid flow from the reservoir into the working chamber. The continuous action of the wipers removes the silicone fluid from the grooves in the working chamber and reduces the shearing action. Thus, less torque is transmitted to the clutch body and the speed of the fan decreases.

The temperature at which the automatic fan clutch engages and disengages is controlled by the setting of the bimetallic coil. This setting is tailored to satisfy the cooling requirements of each car model.

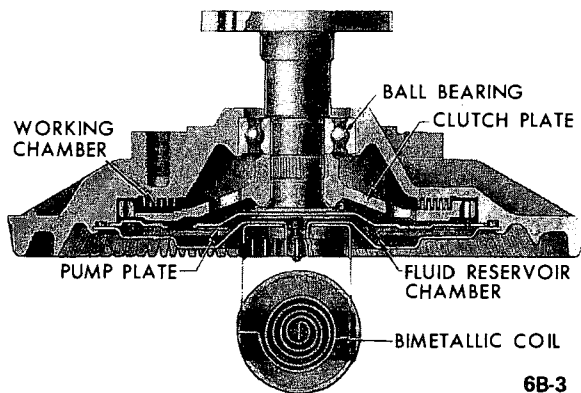


Figure 6B-2 Automatic Fan Clutch Components

### Radiator Cap

The cooling system is sealed by a pressure type radiator filler cap which causes the system to operate at higher than atmospheric pressure. The higher pressure raises the boiling point of coolant and increases the cooling efficiency of the radiator. The 15 pound pressure cap used on all series permits a possible increase of approximately 38 degrees F. in boiling point of coolant.

The pressure type radiator filler cap contains a blow off or pressure valve and a vacuum or atmospheric valve. See Figure 6B-3. The pressure valve is held against its seat by a spring of pre-determined strength which protects the radiator by relieving the pressure if an extreme case of internal pressure should exceed that for which the cooling system is designed. The vacuum valve is held against its seat by a light spring which permits opening of the valve to relieve vacuum created in the system when it cools off and which otherwise might cause the coolant hoses to collapse.

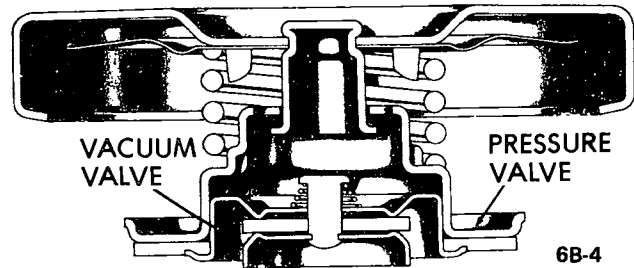


Figure 6B-3 - Pressure Type Radiator Cap

### Water Pump

The coolant is circulated by a centrifugal pump mounted on the timing chain cover (engine block L-6) which forms the outlet side of the pump. The fan and pulley(s) are bolted to the forward end of the pump shaft. In this manner both the fan and pump are belt driven by a crankshaft driven pulley integral with harmonic balancer.

The pump shaft is supported on a double row ball bearing shrunk fit in the aluminum water pump cover. The bearings are permanently lubricated during manufacturing and sealed to prevent loss of lubricant and entry of dirt.

The pump is sealed against coolant leakage by a packless non-adjustable seal assembly mounted in the pump cover in position to bear against a ceramic face assembly.

The inlet pipe case on the timing chain cover feeds into the passage formed by the cover and the front face of the impeller, which is mounted on the bearing shaft with the vanes facing rearward. Coolant flows through the inlet passage to the low pressure area at the center, where it then flows rearward through holes in the impeller. Vanes on the rotating impeller cause the coolant to flow radially outward into two discharge passages cast in the timing chain cover, and these passages deliver an equal quantity of coolant to each cylinder bank water jacket.

The coolant leaves the cylinder heads through the intake manifold that provides a common connection between both heads and the radiator. The intake manifold also houses the "pellet" type radiator thermostat and outlet provides the by-pass passage through which coolant returns to the water pump for recirculation whenever the thermostat valve closes to block circulation through the radiator. This thermostatically operated by-pass type of water temperature control permits the engine to reach its normal operating temperature quickly.

## DIAGNOSIS

### Cooling System

If the radiator is filled too full when cold, expansion when hot will overflow the radiator and coolant will be lost through the overflow pipe. Adding unnecessary water will weaken the anti-freeze solution and raise the temperature at which freezing may occur.

If the cooling system requires frequent addition of coolant in order to maintain the proper level in the radiator, check all units and connections in the cooling system for evidence of leakage. Inspection should be made with cooling

system cold. Small leaks which may show dampness or dripping can easily escape detection when the engine is hot, due to the rapid evaporation of coolant. Tell-tale stains of grayish white or rusty color, or dye stains from anti-freeze, at joints in cooling system are almost always sure signs of small leaks even though there appears to be no damage.

Air or gas in the cooling system may raise the level in radiator and cause loss of coolant through the overflow pipe. Air may be drawn into the cooling system through leakage at the water pump seal. Gas may be forced into the cooling system through leakage at the cylinder head gasket even though the leakage is not sufficient to allow water to enter the combustion chamber. The following quick check for air leaks on suction side of pump or gas leakage from engine may be made with a piece of rubber tubing and a glass bottle containing water.

1. With cooling system cold, add water to bring coolant to proper level.
2. Block open the radiator cap pressure valve, or use a plain cap, and be sure radiator cap is on tight. Attach a suitable length of rubber hose to overflow pipe.
3. Run engine in neutral on high step of fast idle cam until the engine reaches a constant operating temperature.
4. Without changing engine speed, put the free end of rubber hose into a bottle of water, avoiding kinks or low bends that might block the flow of air.
5. Watch for air bubbles in water bottle. A continuous flow of bubbles indicates that air is being sucked into the cooling system, or exhaust gas is leaking into the cooling system past the cylinder head gasket.

### Cooling System Overheating

It must be remembered that the Buick pressure system operates at higher temperatures than systems operating at atmospheric pressure. Depending on the pressure in cooling system, the temperature of permanent type anti-freeze may go considerably above 212 degrees F. without danger of boiling.

In cases of actual overheating the following conditions should be checked:

1. Excessive water loss.
2. Slipping or broken fan belt.
3. Radiator thermostat stuck, radiator air passages clogged, restriction in radiator core, hoses, or water jacket passages.
4. Malfunctioning fan clutch. See Fan Clutch Diagnosis.
5. Improper ignition timing.
6. Shortage of engine oil or improper lubrication due to internal conditions.
7. Dragging brakes.

### FAN CLUTCH DIAGNOSIS

1. **NOISE** - Fan noise is sometimes evident under the following normal conditions:
  - (a) when clutch is engaged for maximum cooling, and

(b) during first few minutes after start-up until the clutch can re-distribute the silicone fluid back to its normal disengaged operating condition.

However, fan noise or an excessive roar will generally occur continuously under all high engine speed conditions (2500 rpm and up) if the clutch assembly is locked up due to an internal failure. If the fan cannot be rotated by hand or there is a rough grating feel as the fan is turned, the clutch should be replaced.

2. **LOOSENESS** - Under various temperature conditions there is a visible lateral movement that can be observed at the tip of the fan blade. This is a normal condition due to the type of bearing used. Approximately 1/4" maximum lateral movement measured at the fan tip is allowable. This is not cause for replacement.

3. **SILICONE FLUID LEAK** - The operation of the unit is generally not affected by small fluid leaks which may occur in the area around the bearing assembly and bimetallic coil. However, if the degree of leakage appears excessive, proceed to item 4.

### 4. ENGINE OVERHEATING

A. Start with a cool engine to ensure complete fan clutch disengagement.

B. If the fan and clutch assembly free-wheels with no drag (revolves over 5 times when spun by hand), the clutch should be replaced. If clutch performs properly with a slight drag, go to step C.

**NOTE:** *Testing a fan clutch by holding the small hub with one hand and rotating the aluminum housing in a clockwise/counterclockwise motion will cause the clutch to free-wheel, which is a normal condition when operated in this manner. This should not be considered a test by which replacement is determined.*

C. Use dial type thermometer J-23640, or similar type.

**NOTE:** *J-23640 reads to 220 degrees F.*

Position thermometer so that the thermometer sensor is centered in the space between the fan blades and radiator. This can be achieved by inserting the sensor through one of the existing holes in the fan shroud or fan guard, or by placing between the radiator and the shroud. On some models, it may be necessary to drill a 3/16" hole in the fan shroud to insert Tool J-23640.

**WARNING: CHECK FOR ADEQUATE CLEARANCE BETWEEN FAN BLADES AND THERMOMETER SENSOR BEFORE STARTING ENGINE.**

**NOTE:** *Be sure fan clutch is disengaged at beginning of test.*

D. Cover radiator grille sufficiently to induce a high engine temperature. Start engine and turn on A/C if equipped. Maintain a position in front of the vehicle to observe the thermometer reading. Accelerate the engine to approximately 2000 rpm. Use tachometer if available.

E. Observe thermometer reading when clutch engages. It will take approximately 5 to 10 minutes for the tempera-

ture to become high enough to cause engagement of the fan clutch. This will be indicated by an increase or roar in fan air noise and by a drop in the thermometer reading of approximately 5-15 degrees F. If the clutch did not engage by the temperature specified below, the unit should be replaced.

	Temp.	Code
231 and 350 Cu. In.	185° F.	BC or BJ
455 Cu. In.	190° F.	BL
455 Cu. In. with HDC	182° F.	BM

**WARNING: TO AVOID ENGINE OVERHEATING, DO NOT CONTINUE TEST PAST THE TEMPERATURE SPECIFIED.**

If no temperature drop was observed and the fan noise level was constant from start of test to the specified temperature, the unit should be replaced.

F. As soon as the clutch engages, remove the radiator grille cover and turn off the A/C to assist in engine cooling. Reduce engine speed to 1500 rpm.

G. After several minutes the fan clutch should disengage, as indicated by a reduction in fan speed and roar.

Condition	Possible Cause	Correction
Loss of Coolant due to Leaks	1. Check for obvious external leaks, broken or loose fan belt, collapsed radiator hoses, and check external condition of radiator. Check for leak at heater water valve and core.	Repair, adjust, clean or replace parts as necessary.
Loss of Coolant due to Boiling	1. Loss of coolant due to boiling indicates a malfunctioning part in the cooling system, see conditions: Hot light "ON" engine overheats during normal highway driving and "HOT" light on engine overheats when idling for extended periods of time or after extensive city driving, for possible causes and corrections.	
Hot LIGHT "ON" Engine Not Hot	1. Malfunctioning temperature sending unit.	See Figures 6B-5, 6B-6, and 6B-7.
	2. Grounded wire in electrical circuit between hot light bulb and sending unit.	See Figures 6B-5, 6B-6, and 6B-7.
Hot light "ON" Engine Overheats During Normal Highway Driving	1. Loose or broken fan belt.	Adjust or replace.
	2. Leaks.	See Figure 6B-8
	3. Low coolant level.	Refill.
	4. Malfunctioning water pump.	Replace.
	5. Malfunctioning thermostat.	Replace.

	6. Radiator plugged internally.	Rod radiator.
	7. Radiator plugged externally.	Clean radiator.
	8. Obstruction in air flow through radiator such as bent fins.	Replace radiator.
	9. Air conditioning condenser not parallel with the radiator.	Reposition as necessary.
	10. Incorrect radiator.	See usage chart at the end of the Cooling System Section.
	11. Ignition timing not set to specifications.	Set timing.
	12. Hang on air conditioning system.	Heavy duty cooling system must be used.
	13. Trailer hauling.	
	14. Malfunctioning radiator cap.	Replace.
	15. Restriction in coolant passages in the heads or block.	Replace as necessary.
Hot Light "ON" Engine Overheats when Idling for Extended Periods of time or after NORMAL Around Town Driving	1. Thermovacuum switch malfunctioning.	See Figure 6B-9
	2. Ignition timing not set to specifications.	Set timing.
	3. Leaks or low coolant level.	See Figure 6B-8.
	4. Malfunctioning radiator cap.	Replace.
	5. Malfunctioning water pump.	Replace.
	6. Radiator plugged internally.	Rod radiator
	7. Radiator plugged externally.	Clean radiator
	8. Malfunctioning thermostat.	Replace.

9. Collapsed radiator hose.	Replace.
10. Fan clutch malfunctioning.	See Fan Clutch Diagnosis
11. Incorrect radiator.	See Usage Chart at the end of the Cooling System Section.

**CAUTION:** *Whenever an engine has been severely overheated, always test cooling system for a combustion gas leak due to a bad head gasket caused by the extreme heat. Retorquing the head bolts may solve the problem. If not the head gaskets will have to be replaced.*

## MAINTENANCE AND ADJUSTMENTS

### COOLING SYSTEM SERVICE

#### Checking and Filling Cooling System

Engine coolant level is checked by raising the car's hood and glancing at the translucent reservoir. The radiator cap is *not removed*. The design of the radiator cap has been changed to discourage inadvertent removal. The finger grips have been removed so the cap is round in shape. It must be pushed downward before it can be turned. A message is embossed in the cap cautioning against its being opened and indicating the proper closed position.

The proper coolant level at *normal operating temperature* is between the "Full" and the "Add" marks on the coolant reservoir. Since the level may be below the "Add" mark when the system cools and the coolant is below its normal operating temperature, *always* check the coolant level after the car has been driven.

Coolant freeze protection should be checked at the radiator and not at the reservoir.

**WARNING: NEVER REMOVE THE RADIATOR CAP QUICKLY WHEN THE RADIATOR IS HOT. SUDDEN RELEASE OF COOLING SYSTEM PRESSURE MAY CAUSE THE COOLANT TO BOIL AND ESCAPE WITH SOME FORCE.**

If the cap must be removed when the engine is at normal or above temperature, a cloth should be placed over the cap. The cap should then be rotated *counterclockwise* without pressing downward until the relief position is reached. The pressure must be allowed to escape completely. This may take more than 10 minutes for a large, hot engine. The cap should then be depressed and rotated again *counterclockwise* to the removal position.

#### Draining and Flushing the Cooling System

When the cooling system has been drained, reinstall an ethylene glycol type anti-corrosion cooling system protection solution developed for year around use (General Motors Specification GM 1899-M). *Water alone, methanol, or alcohol type anti-freeze is definitely not recommended.*

To drain the cooling system, remove radiator cap, and open the drain at the bottom of the radiator. If car is air-conditioned equipped, set heater temperature control valve at "HOT" position.

After the cooling system is drained, and drain cock closed, fill the system with clean water. Run the engine long enough to open the thermostat for complete circulation through the system then completely drain the cooling system before sediment has a chance to settle. Then fill cooling system with a 50% water and 50% ethylene glycol solution.

#### Conditioning the Cooling System

It is very important to make certain that the cooling system is properly prepared before an anti-freeze solution is installed; otherwise, loss of solution through leakage may occur or seepage may result in damage to the engine. The cooling system should be drained and flushed. All joints should be pressure checked for leakage and corrected.

Inspect the water pump, radiator core, heater core, drain cocks, and edge of cylinder head gaskets for evidence of leaks. Tighten all hose clamps in the cooling and heating systems and replace any deteriorated hoses.

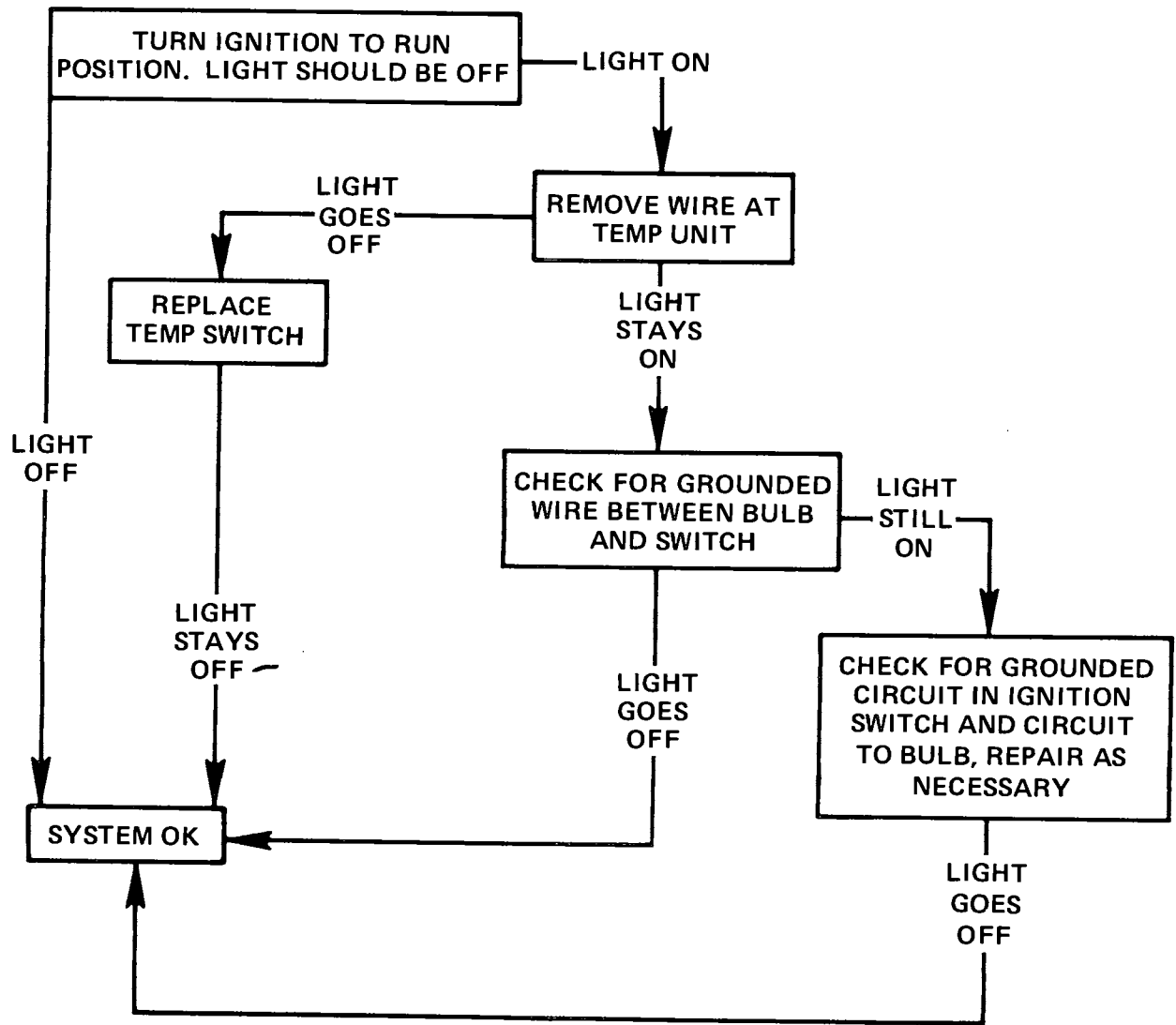
#### Using and Testing Anti-Freeze Solutions

Inhibited year around (ethylene glycol type) engine coolant solution which is formulated to withstand two full calendar years of normal operation without draining or adding inhibitors should be used at all times (not less than 0 degrees F., to freeze protection should be provided to protect against corrosion). When adding solution due to loss of coolant for any reason or in areas where temperatures lower than -20 degrees F. may be encountered, a sufficient amount of any of the several brands of year around coolant (Ethylene Glycol base) compatible to GM Specification 1899-M available on the market should be used.

Alcohol base coolants are not recommended for this vehicle at any time.

If for any reason water is used as a coolant in a emergency, it is extremely important that Buick Heavy Duty Cooling System Protector and Water Pump Lubricant or equivalent be added to the cooling system as soon as possible. If any other cooling system protector is used, be certain it is labeled to indicate that it meets General Motors Specification GM 1899-M. It should be recognized that this is only

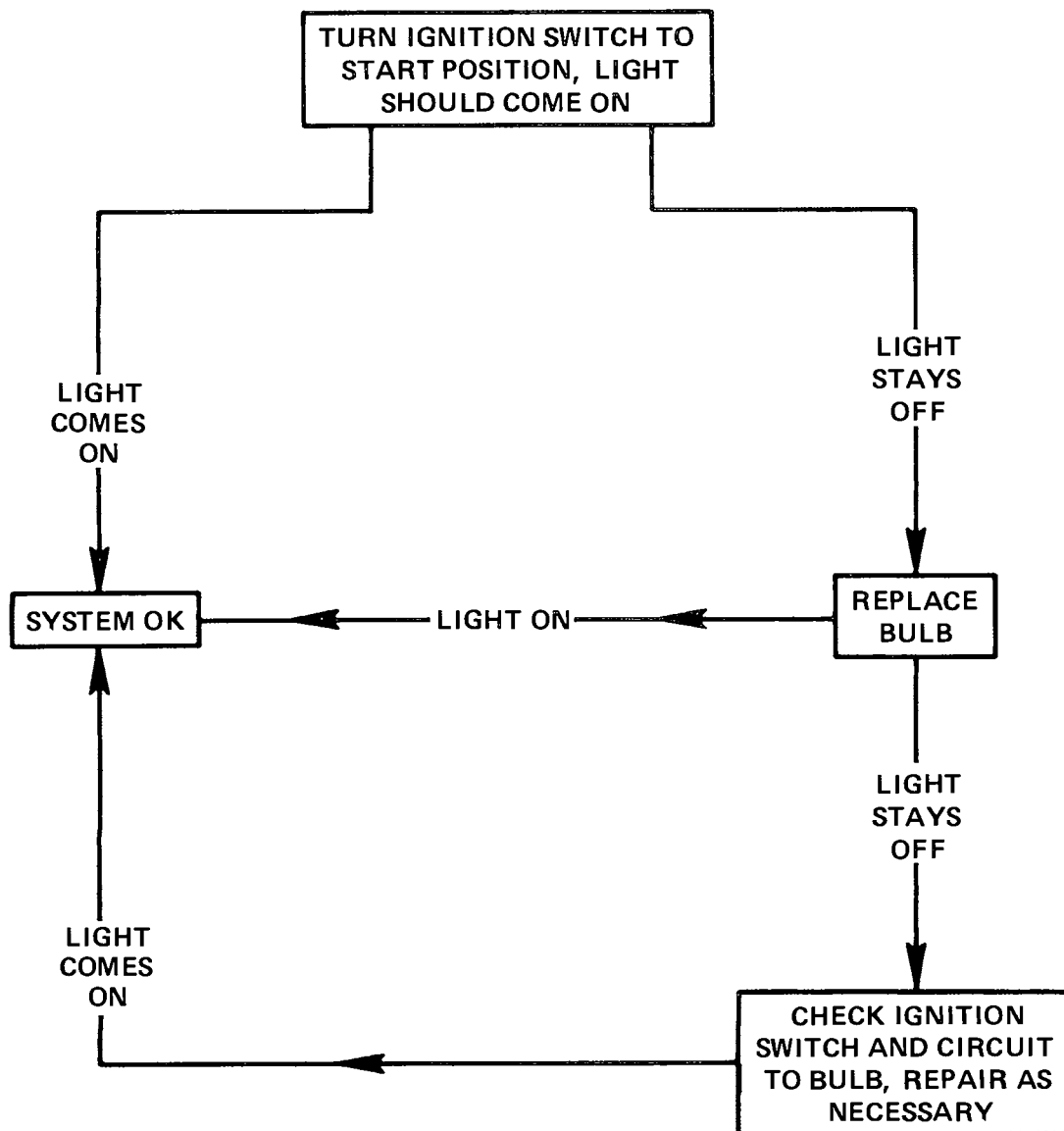
### HOT LIGHT ALWAYS ON (ENGINE NOT HOT)



5B6B4

Figure 6B-4

# HOT LIGHT FAILS TO LIGHT WITH IGNITION IN START POSITION

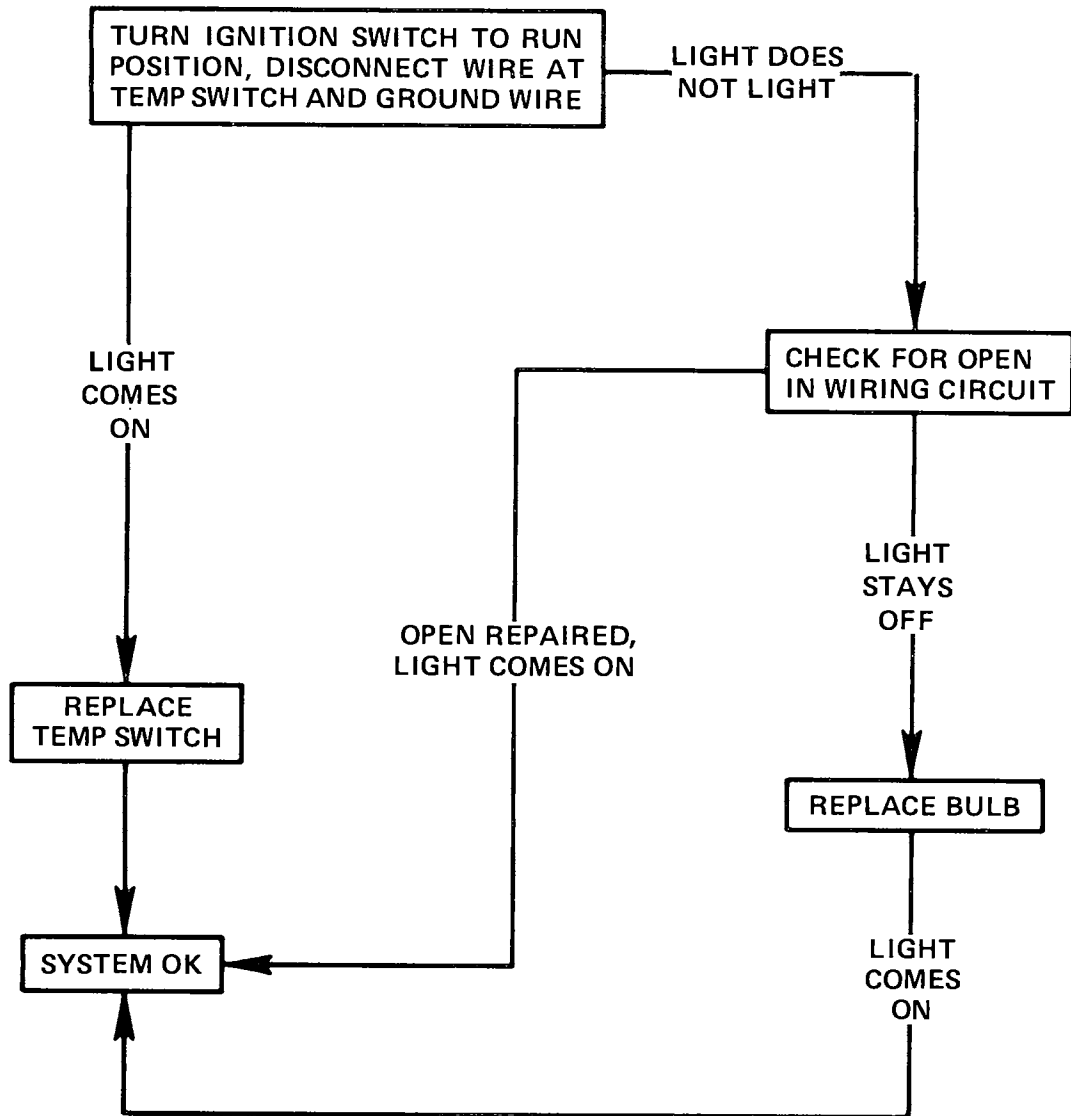


5B6B5

Figure 6B-5

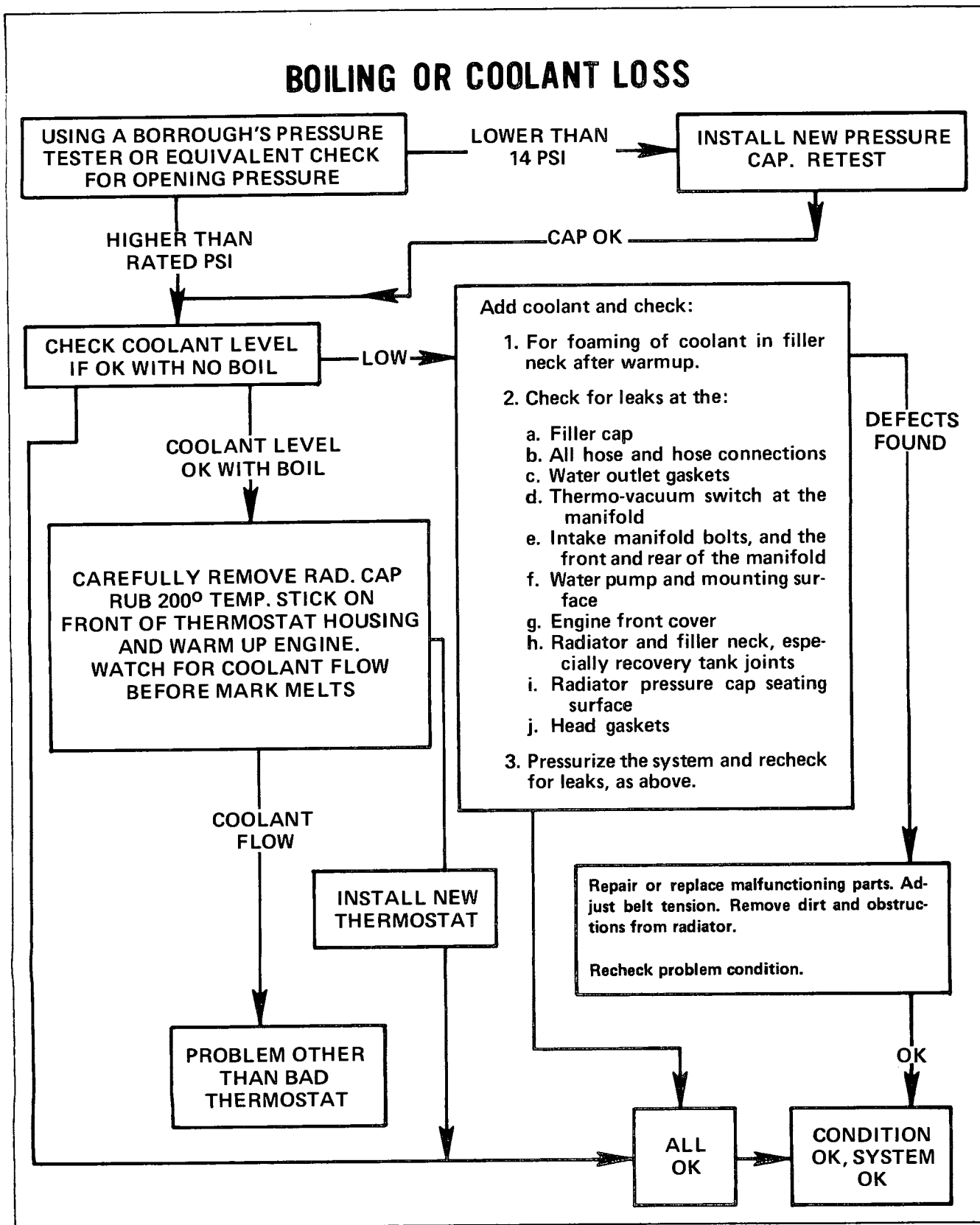


# HOT LIGHT FAILED TO LIGHT (ENGINE OVERHEATED)



5B6B6

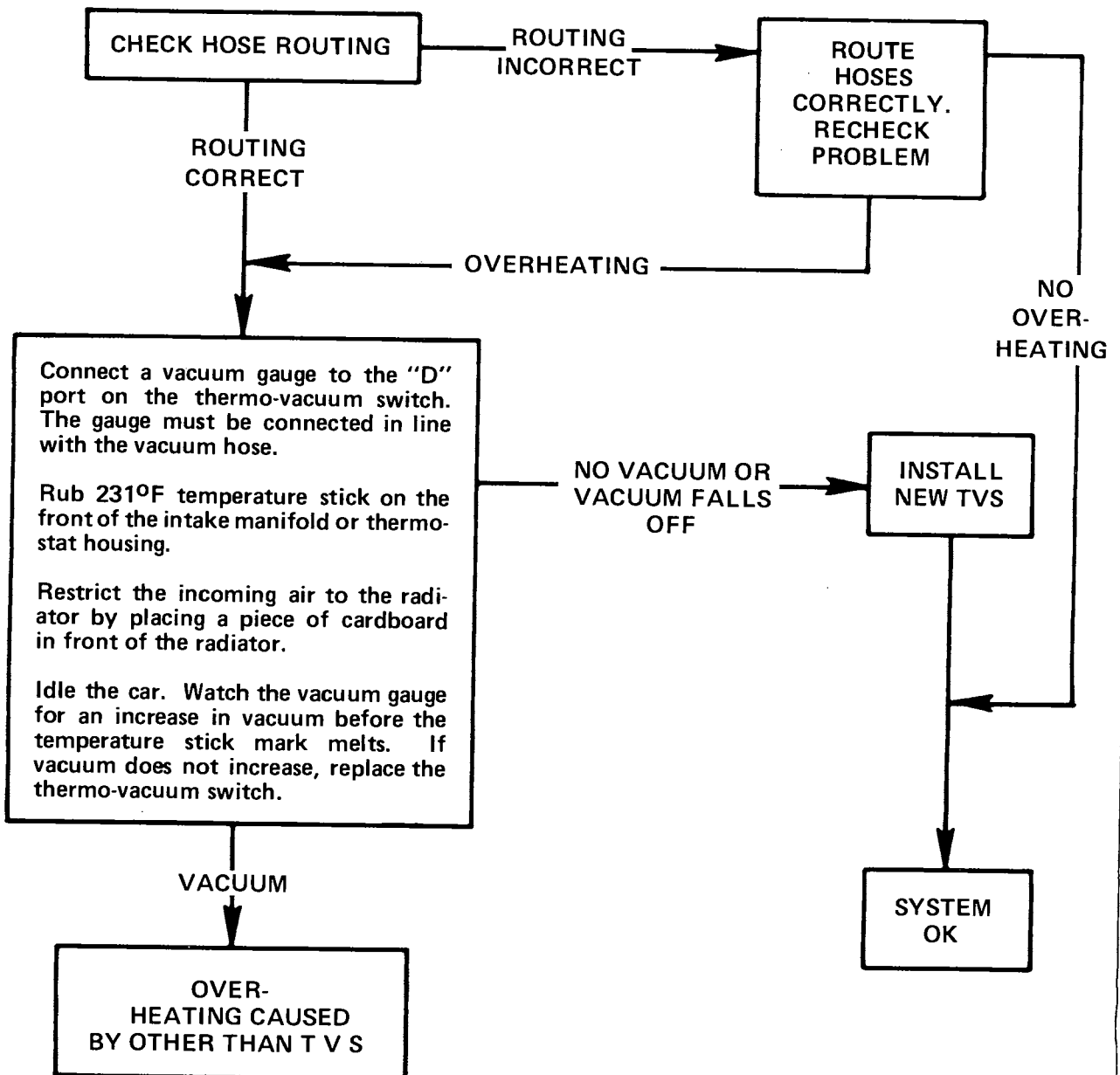
Figure 6B-6



5B6B7

Figure 6B-7

## THERMO VACUUM SWITCH CHECK (ENGINE OVERHEATS WHEN IDLING)



5B6B8

Figure 6B-8

a temporary measure. The manufacturer intends that ethylene glycol type coolant solution be used year around in the cooling system of your Buick.

*The cooling system should be completely drained and the recommended coolant installed every 24 months or 30,000 miles. At this time, also add GM cooling system inhibitor and sealer or equivalent.* It is advisable to check the anti-freeze solution at intervals during the winter to make certain that the solution has not been weakened by evaporation or leakage. Use only hydrometers which are calibrated to read both the specific gravity and the temperature. Obtain a table or similar means of converting the freezing point at various temperatures of the solution. Disregarding the temperature of the solution when making the test may cause an error as large as 30 degrees F. Care must be exercised to use the correct float or table for the particular type of anti-freeze being tested.

### Fan Belt Adjustment and Replacement

A tight fan belt will cause rapid wear of the Delcotron generator and water pump bearings. A loose belt will slip and wear excessively causing noise, engine overheating and unsteady generator output. A fan belt which is cracked or frayed, or is worn so that it bottoms in the pulleys should be replaced.

The fan belt may be replaced by loosening the generator brace at both ends, slightly loosening the generator mounting bolts, and moving generator inward to provide maximum slack in the belt.

The Delcotron generator must be moved outboard to adjust the fan belt. After the Delcotron generator brace and mounting bolts are securely tightened, the fan belt tension should be checked. See Belt Tension chart at the end of this section.

If the power steering oil pump belt is removed it should be adjusted to specifications.

If the Air Conditioner compressor belt is disturbed it should be adjusted as specified. If A.I.R. pump belt is loosened, it should be tightened to specifications.

### Radiator Thermostat Inspection and Test

A sticking radiator thermostat will prevent the cooling system from functioning properly. If the thermostat sticks in the open position, the engine will warm up very slowly. If the thermostat sticks in the closed position, overheating will result.

The thermostat may be removed for inspection by partially draining the cooling system and removing the thermostat housing.

If the thermostat valve does not fully close when cold, check for the presence of foreign material that could hold it open. If no foreign material is present and valve still does not close, replace the thermostat.

Test the thermostat for correct opening temperature by immersing the unit and a thermometer in a container of water. While heating the water do not rest either the thermometer or thermostat on bottom of container as this will cause them to register a higher temperature than the

## MAJOR REPAIR

### WATER PUMP

The water pump cover is die cast aluminum into which the water pump bearing outer race is shrunk fit. For this reason the cover, shaft bearing, and hub are not replaceable.

#### Water Pump Removal and Installation Removal 250 Cu. In. Engine

1. Drain radiator.
2. Disconnect heater hose and lower radiator hose at water pump.
3. Loosen Delcotron bolt and remove fan belt.
4. Remove fan blade and pulley.

**WARNING: IF A FAN BLADE IS BENT OR DAMAGED IN ANY WAY, NO ATTEMPT SHOULD BE MADE TO REPAIR AND REUSE THE DAMAGED PART. A BENT OR DAMAGED FAN ASSEMBLY SHOULD ALWAYS BE REPLACED WITH A NEW FAN ASSEMBLY.**

**CAUTION:** *When removing pump, pull the pump straight out of the block, to avoid damage to the impeller.*

5. Remove pump-to-cylinder block and power steering to pump bolts and remove pump and old gasket from engine.

#### Installation

1. Using a new, sealer-coated gasket, install pump assembly on cylinder block.
2. Reverse steps 1-4 of Removal Procedures for water pump installation.

#### All Engines Except 250 Cu. In. Engines

1. Drain coolant into a clean container.
2. Loosen belt or belts, then remove fan blade, and pulley or pulleys from hub on water pump shaft. Remove belts, 400 engine remove front Delcotron bracket also.
3. Disconnect hose from water pump inlet and heater hose from nipple. Remove bolts, pump assembly, and gasket from timing chain cover.
4. Check pump shaft bearings for end play or roughness in operation. If bearings are not in serviceable condition, the assembly must be replaced.

#### Installation of Water Pump

1. Make sure the gasket surfaces on pump and timing chain cover are clean. Install pump assembly with new gasket. Bolts must be tightened uniformly.
2. Connect radiator hose to pump inlet and heater hose to nipple. Fill cooling system and check for leaks at pump and hose joints.

3. Install fan pulley or pulleys and fan blade, tighten attaching bolts securely. Install belts and adjust for proper tension. See Figure 6B-10.

**FAN SHROUD REMOVAL AND INSTALLATION**

**Removal "H" Series**

1. Loosen all drive belts.
2. Remove fan blade attaching bolts and fan shroud attaching screws.
3. Fan shroud and fan blade must be removed together.

**"X" Series**

1. Remove engine fan.
2. Remove fan shroud mounting screws.
3. Lift the shroud out of the clips at the bottom and remove fan shroud.

**Installation**

1. Reverse removal procedures.

**A-B-C-E Series**

1. Disconnect battery.
2. Drain radiator.
3. Remove 4 bolts from fan blade and remove fan blade.
4. Disconnect upper radiator hose at the radiator and swing hose out of the way.
5. Disconnect windshield washer hose.

6. Disconnect hose from coolant reservoir to radiator.
7. Remove two screws at top of fan shroud assembly and lift fan shroud assembly out.

**Installation**

1. Reverse removal procedures.

**RADIATOR MOUNTING RADIATOR REMOVAL AND INSTALLATION**

**Removal All Series**

1. Drain the radiator.
2. Disconnect the upper and lower radiator hoses and transmission oil cooler lines (if equipped).
3. Disconnect radiator recovery hose.
4. Remove fan shroud to radiator screws. Lift the fan shroud out of the lower clips and hang the shroud over the engine fan.
5. Remove radiator upper mounting panel.
6. Lift radiator out.

**Installation**

1. For installation of the radiator reverse removal procedures.
2. Fill cooling system and check for leaks.

**SPECIFICATIONS**

**BOLT TORQUE SPECIFICATIONS**

Use a reliable torque wrench to obtain the figures listed below. This will prevent straining or distorting the parts, as well as preventing thread damage. These specifications are for clean and lightly-lubricated threads only. Dry or dirty threads produce friction which prevents accurate measurement of the actual torque. It is important that these torque specifications be strictly observed. Overtightening can damage threads. This will prevent attainment of the proper torque and will require replacement of the damaged part.

<i>250 Engine</i> .....	<i>Lb. Ft.</i>
Water Pump to Cylinder Block .....	15
Fan Driven Pulley.....	25
Thermostat Housing to Cylinder Head .....	30
Fan Shroud to Radiator Upper Mounting Panel .....	5
Coolant Recovery Tank Bracket .....	5
<i>231, 350 and 455 Engine</i>	
Water Pump Cover to Timing Chain Cover .....	7
Fan Driven Pulley .....	20
Thermostat Housing to Intake Manifold .....	20
Fan Shroud to Radiator Upper Mounting Panel .....	10
Delcotron Bracket to Water Pump Timing Chain Cover.....	20
<i>400 Engine</i>	
Bolt-Fan to Water Pump .....	20
Bolt-Timing Chain Cover .....	30
Nut-Timing Chain Cover .....	15
Bolt-Water Outlet Fitting .....	30

*260 Engine*

Fan Driven Pulley to Hub Bolts .....	20
Fan Driving Pulley to Balancer Bolts .....	20
Water Pump to Front Cover Bolts .....	13
Water Outlet to Manifold Bolts .....	20

**COOLING SYSTEM SPECIFICATIONS**

*Fan Diameter and No. of Blades*

250 Cu. In. less A/C .....	17-5/8" x 4
250 Cu. In. with A/C .....	18" x 7
231 "H" less A/C .....	17" x 5
231 "H" with A/C .....	17" x 7
400 Cu. In. less A/C .....	19" x 4
All 231, 350 and 455 Engines less A/C Except "H" Series 231 .....	18" x 5
All 231, 350, 400, and 455 Engines with A/C Except "H" Series 231 .....	20" x 5
260 Cu. In. Engine Without A/C .....	19" x 4
260 Cu. In. Engine with A/C .....	19-1/2" x 6
Fan Drive	
All Engines Less A/C .....	Water Pump Shaft
All Engines with A/C .....	Torque and Temperature Sensitive Clutch
System Type .....	Pressure
Radiator Cap Relief Pressure .....	15 PSI
Thermostat	Opening Temperature
231-350-455 .....	190°
250-260-400 .....	195°

**WATER PUMP**

Type .....	Centrifugal
Drive .....	V-Belt
Bearings .....	Double Row

**COOLING SYSTEM CAPACITIES**

**H SERIES**

231 Cu. In. Engine	<b>Quarts</b>
With Heater .....	13.3
With A/C .....	13.8

**X SERIES**

231 Cu. In. Engine	
With Heater .....	17.1
With A/C With or Without Heavy Duty Cooling .....	17.2
250 Cu. In. Engine	
With Heater .....	16.9
With A/C .....	17.0
260 Cu. In. Engine	
With Heater .....	23.0
With A/C .....	23.5
350 Cu. In. Engine	
With Heater .....	18.5
With A/C and/or Heavy Duty Cooling .....	19.2

**A SERIES**

231 Cu. In. Engine	
All .....	15.3

**A-B SERIES**

350 Cu. In. Engine	
With Heater .....	16.9
With A/C and/or Heavy Duty Cooling .....	17.2

**B-C-E SERIES**

455 Cu. In. Engine	
With Heater .....	19.6
With A/C .....	20.0
With Heavy Duty Cooling .....	21.5

## Buick Cooling System Design Levels

Buick pressurized cooling systems have been designed to meet four stringent requirements: Road Cooling; City Traffic; Cooling at Idle; Grade and Trailer Towing.



CONDITION	DESIGN LEVEL		
	SPEED	AMBIENT TEMPERATURE	TIME
ROAD COOLING	90 MPH MAXIMUM	UP TO 125°F	
CITY TRAFFIC	STOP AND GO	UP TO 115°F	30 MINUTES MINIMUM
IDLE	70 MPH TO FULL STOP	UP TO 100°F	12 MINUTES IN DRIVE
7.2% GRADES – WITHOUT TRAILER WITH 2000-POUND TRAILER	60 MPH	UP TO 110°F	
	50 MPH	UP TO 110°F	

### NOTE

*IT IS IMPORTANT TO KEEP THE FOLLOWING DESIGN LEVELS IN MIND WHEN SERVICING A CAR WITH AN OVERHEATING CONDITION. THE DESIGN PARAMETERS ARE HIGH AND A VEHICLE THAT IS OVERHEATING WOULD MOST OFTEN SUGGEST A COMPONENT MALFUNCTION OR IMPROPER MAINTENANCE, RATHER THAN AN EXTREME CLIMATIC CONDITION.*

Assuming that the cooling system is in good repair; that is, the radiator is free of air flow restrictions, the system is properly filled with a minimum of 44% ethylene glycol solution, belts are in proper tension, etc., the following minimum design levels can be met by Buick cooling systems.

### ROAD COOLING

The cooling system is designed to operate at car speeds of 90 mph, at outside temperatures of up to at least 125°F without overheating problems.

### CITY TRAFFIC

The cooling system will operate in congested (stop and go) traffic for at least 30 minutes in outside temperatures up to 115°F without overheating problems.

### COOLING AT IDLE

After traveling at 70 mph, then encountering heavy traffic conditions, the car can idle in DRIVE for a minimum of 11 minutes with the air conditioning unit running at the maximum setting, in outside air temperature of 100°F, without overheating problems.

### NOTE

*THE ABOVE IDLE TIME CAN BE EXTENDED BY IDLING IN NEUTRAL.*

These times may be reduced on new engines, but will improve with mileage.

### GRADE AND TRAILER TOWING

The car can travel at highway speeds and on maximum U.S. highway grades (7.2%) at 60 mph without a trailer, and 50 mph with a class 1 (2,000 lb) light trailer at ambient temperatures up to 110°F without overheating problems.

### NOTE

*OPERATION IN LOWER GEAR RANGES LOW 1, OR LOW 2, IMPROVES ENGINE AND TRANSMISSION COOLING ON GRADES. HEAVY TRAILERS (2,000 LB AND UP) SHOULD USE HEAVY-DUTY COOLING PACKAGES FOR SATISFACTORY ENGINE AND TRANSMISSION COOLING.*

5B6B10

Figure 6B-10 Cooling System Design Levels

**B-C SERIES**

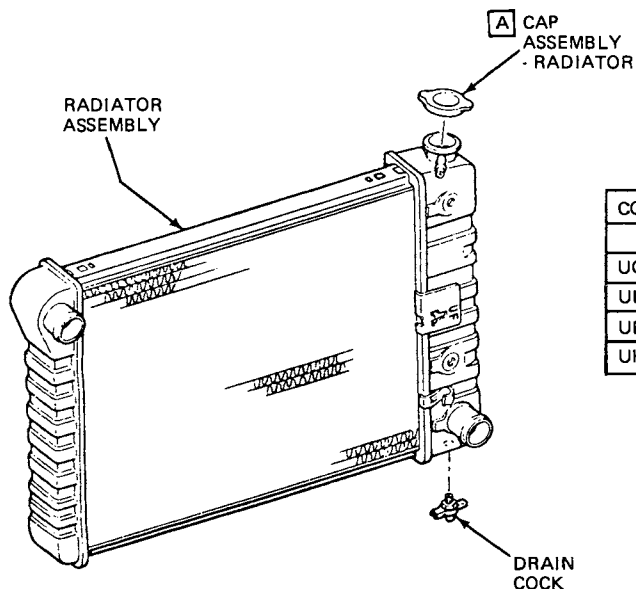
400 Cu. In. Engine	
With Heater .....	23.6
With Heater and HDC .....	25.4
With A/C Wagon .....	26.1
With A/C Sedan .....	24.4
With A/C and HDC All .....	25.9

**ACCESSORY DRIVE BELT TENSION  
"CHECKING" AND "SETTING" TABLE.**

	<u>Specifications For Checking Tension</u>	<u>Specifications For Setting Tension</u>	
	Used Belt (Run over 1 hour) ± 10 lbs.	Used Belt	New Belt ± 10 lbs.
Delcotron	65	80	125
Power Steering	90	90	150
Air Conditioning	90	100	150
AIR Pump	60	65	70

COOLING SYSTEM TO BE FREE OF  
LEAKS AT 14-17 LBS

**A** SEALING SURFACES INSIDE RADIATOR FILLER  
NECK MUST BE CLEAN & FREE OF FOREIGN  
MATERIAL WHEN CAP IS INSTALLED.

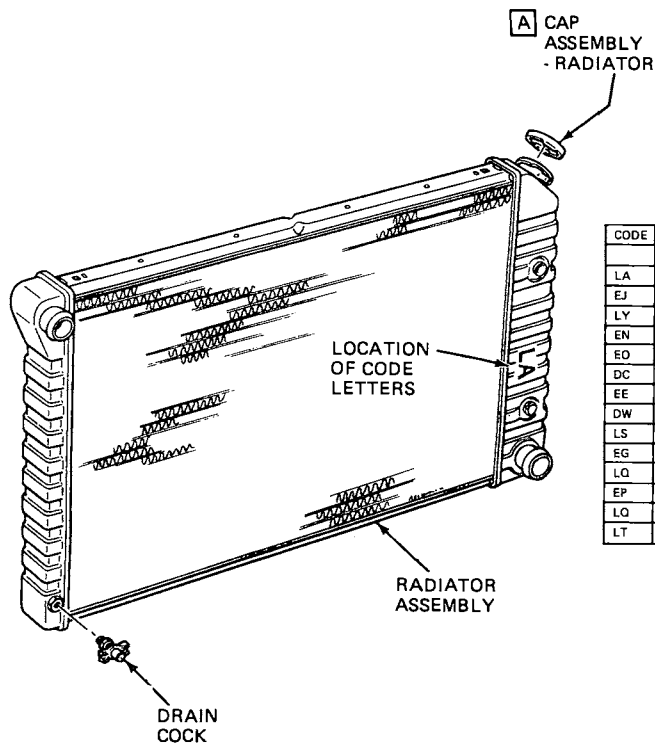


CODE	TRANSMISSION		COOLING	
	MANUAL	AUTOMATIC	STANDARD	AIR CONDITIONING
UG	•		•	
UI	•			•
UF		•	•	
UH		•		•

5B6B11

Figure 6B-11 H Series Radiator Usage Chart





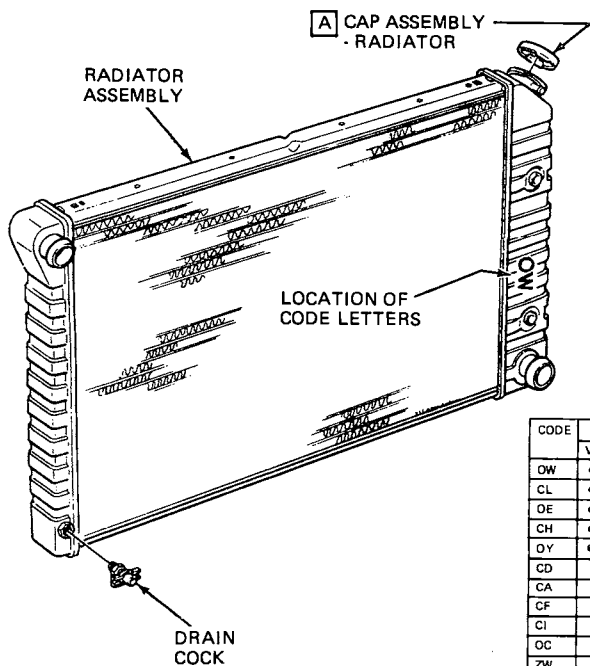
CODE	ENGINES				TRANSMISSION		COOLING			
	V-6	L-6	260	350-2	350-4	MANUAL	AUTOMATIC	STANDARD	AIR CONDITIONING	HEAVY DUTY
LA	•					•		•		
EJ	•					•			•	
LY	•						•	•		
EN	•						•		•	
EO	•						•			•
DC		•				•		•		
EE		•				•			•	
DW		•					•	•		
LS		•					•		•	
EG			•				•	•		
LQ								•	•	
EP				•	•			•		
LQ									•	
LT				•	•					•

COOLING SYSTEM TO BE FREE OF LEAKS AT 14-17 LBS.

**A** SEALING SURFACES INSIDE RADIATOR FILLER NECK MUST BE CLEAN & FREE OF FOREIGN MATERIAL WHEN CAP IS INSTALLED.

5B6B12

Figure 6B-12 X Series Radiator Usage Chart



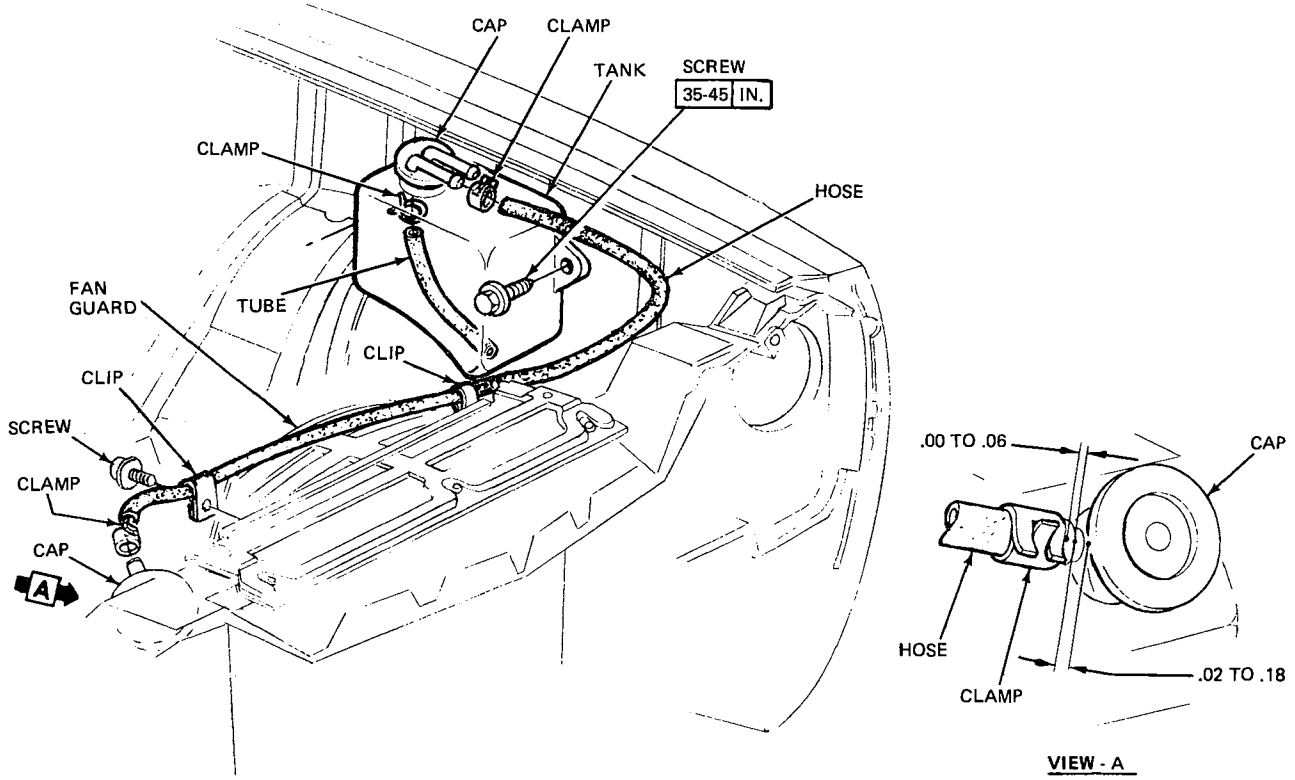
CODE	ENGINES					TRANSMISSION		COOLING			SERIES OR MODELS
	V-6	350-2	350-4	456	400	MANUAL	AUTOMATIC	STANDARD	AIR CONDITIONING	HEAVY DUTY	
OW	•					•		•			"A"
CL	•					•			•		"A"
OE	•						•	•			"A"
CH	•						•		•		"A"
OY	•					•					"A"
CD		•	•				•	•			"A-B"
CA		•					•		•		"A-B"
CF		•	•				•			•	"A-B"
CI				•			•	•			"B-C-E"
OC				•			•				"B-C-E"
ZW				•			•		•		"B-C-E"
CR				•			•	•			"B-C"
OC				•			•		•		"B-C"
PC				•			•				"B-C"
CR				•			•			•	"B-C"
CR				•			•				"B-WAGON"
PB				•			•		•		"B-WAGON"

COOLING SYSTEM TO BE FREE OF LEAKS AT 14-17 LBS.

**A** SEALING SURFACES INSIDE RADIATOR FILLER NECK MUST BE CLEAN & FREE OF FOREIGN MATERIAL WHEN CAP IS INSTALLED.

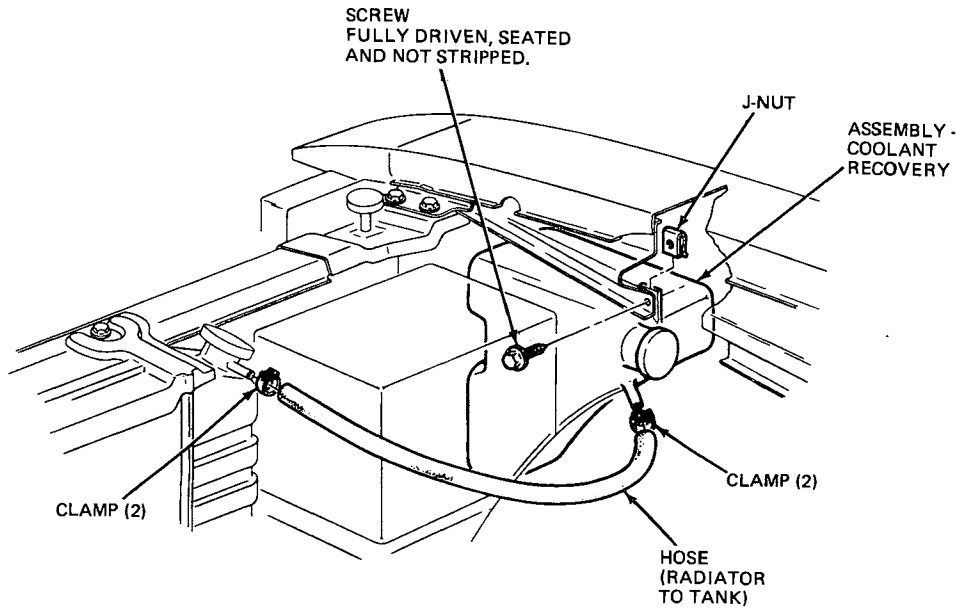
5B6B13

Figure 6B-13 A-B-C-E Series Radiator Usage Chart



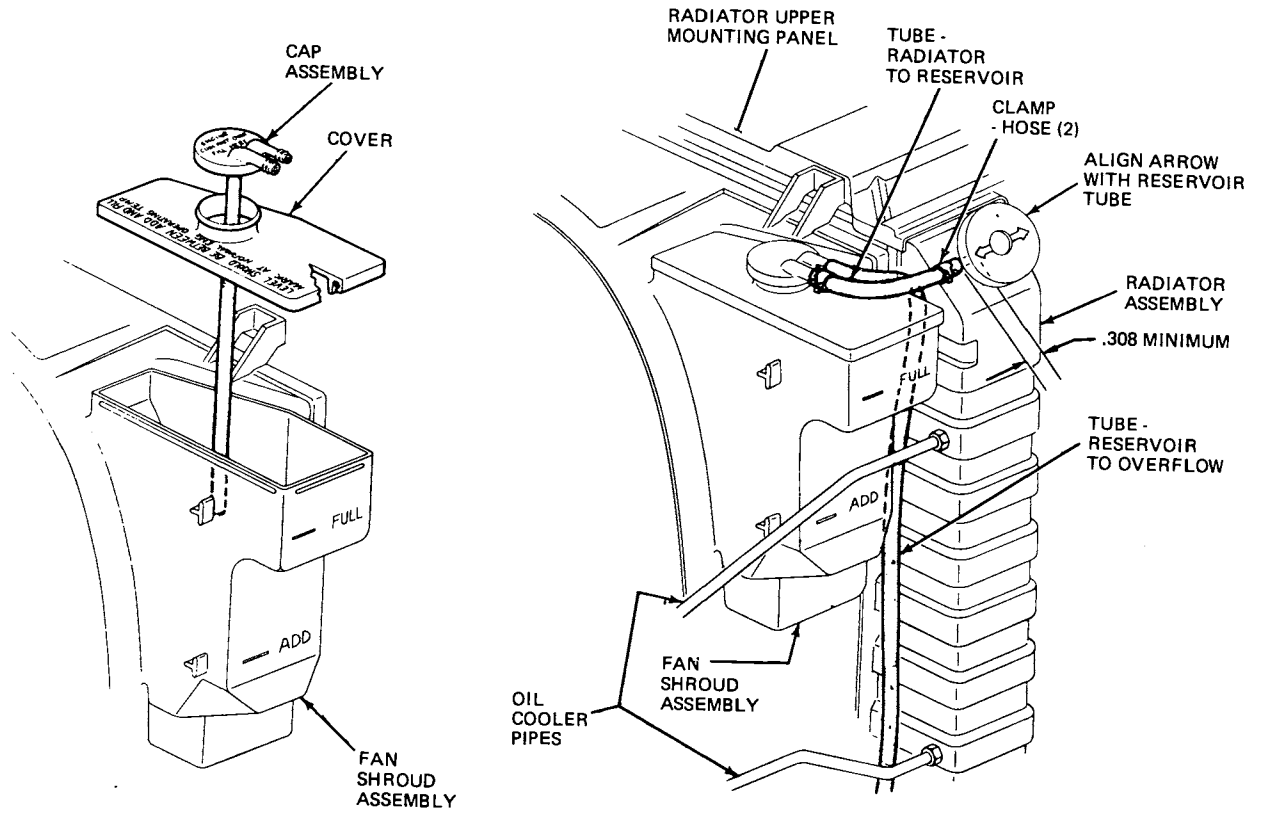
5B6B14

Figure 6B-14 H Series Coolant Recovery System



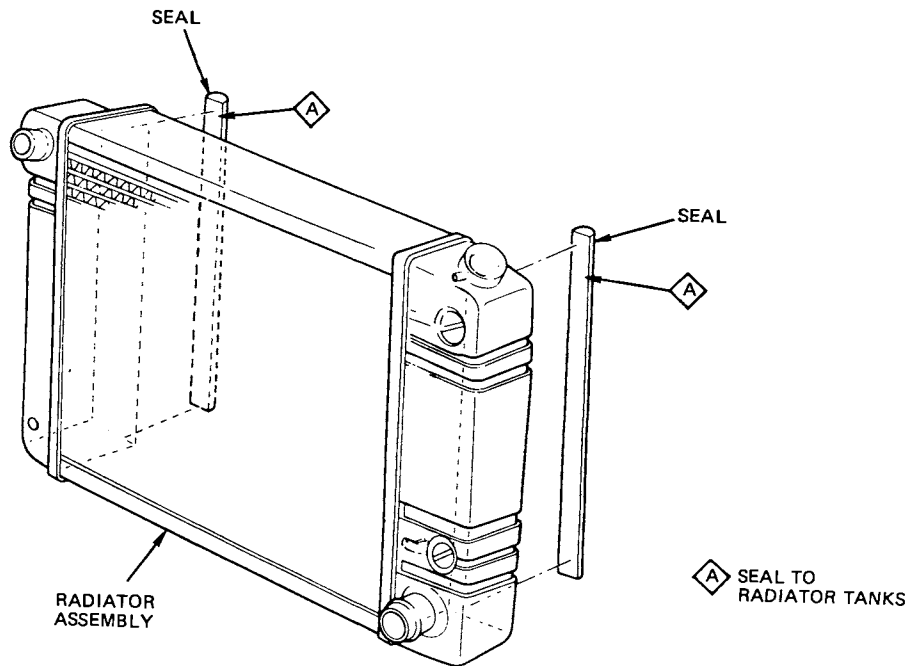
5B6B15

Figure 6B-15 X Series Coolant Recovery System



5B6B16

Figure 6B-16 A-B-C-E Series Coolant Recovery System



5B6B17

Figure 6B-17 Radiator Seals 260 Engine

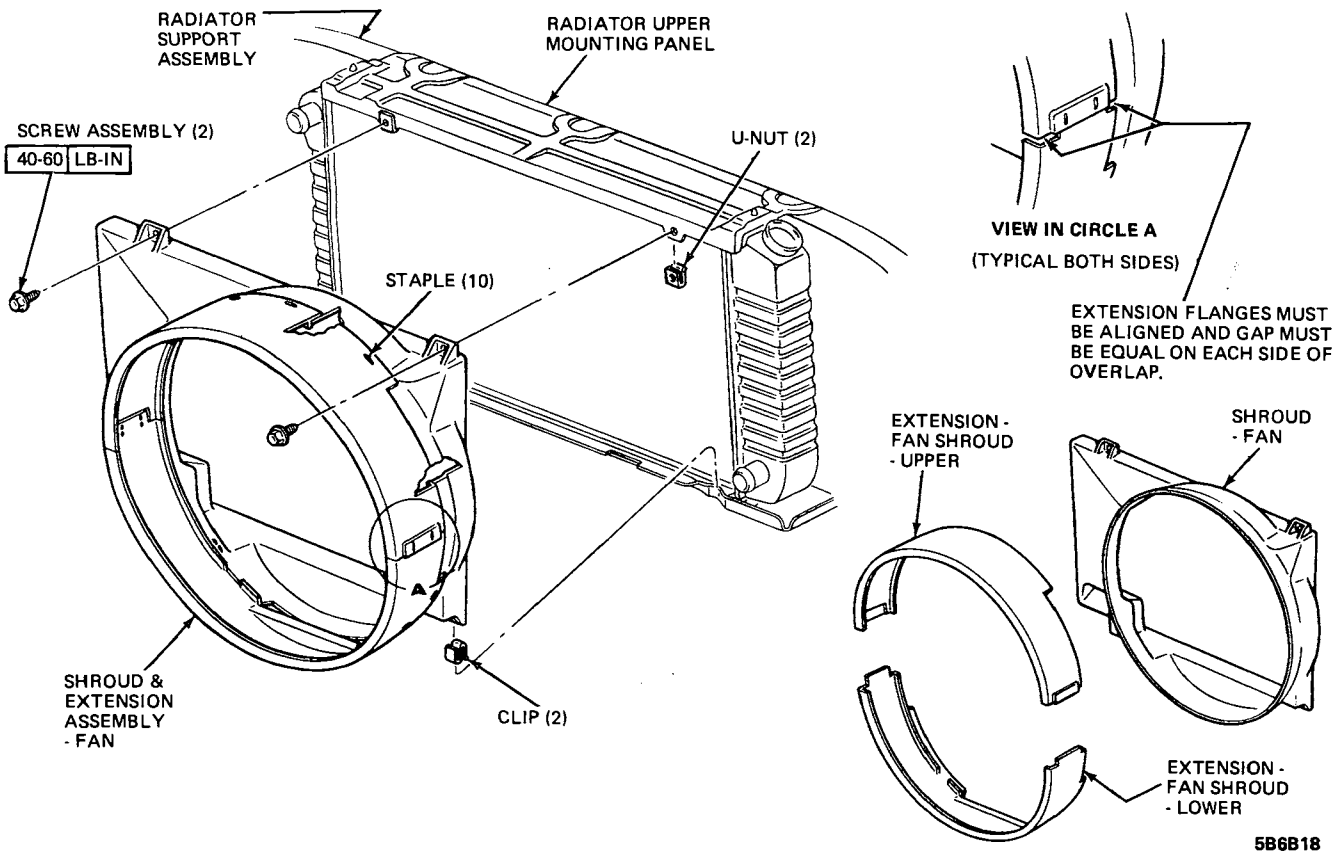


Figure 6B-18 X Series Fan Shroud V-6 Engine

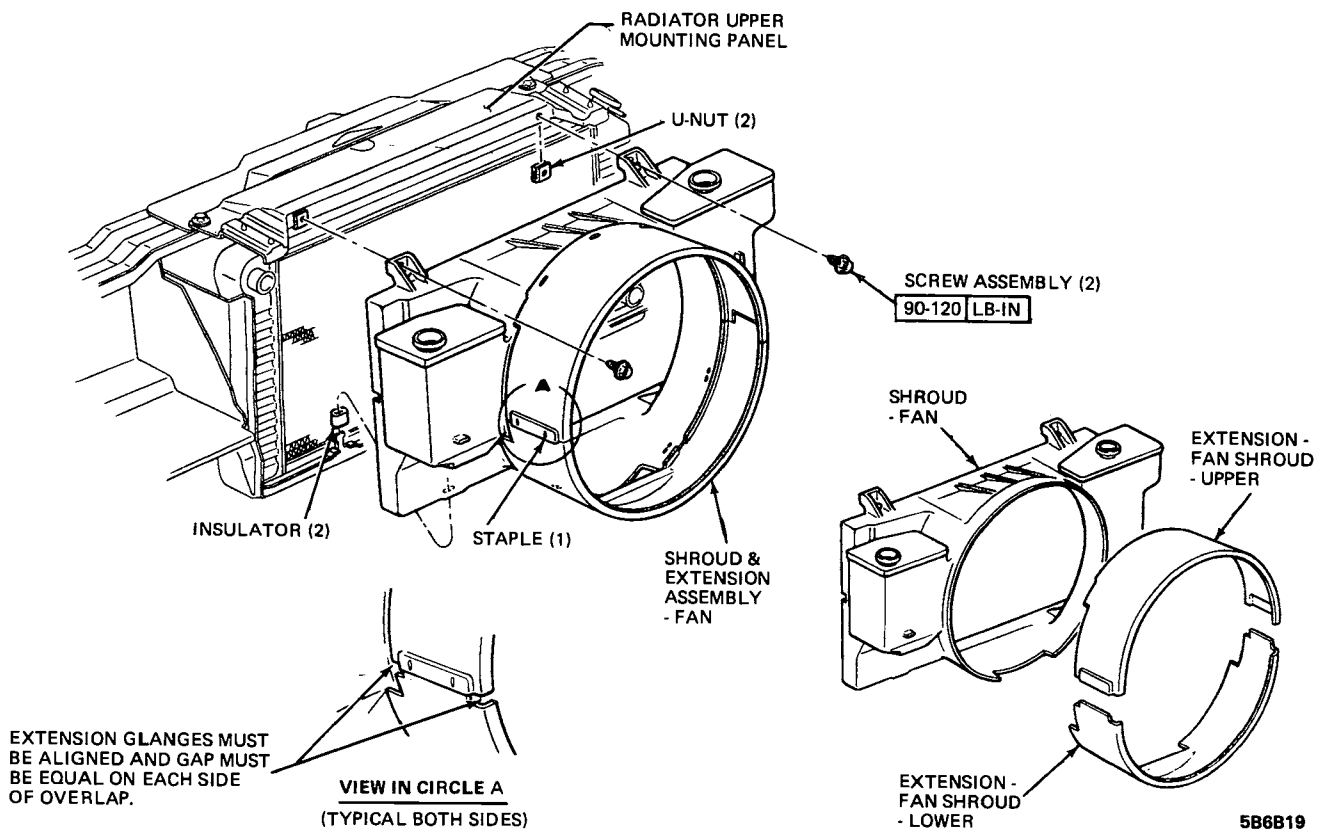


Figure 6B-19 A Series Fan Shroud V-6 Engine