

MISCELLANEOUS ACCESSORIES ALL SERIES

CONTENTS

Subject

DESCRIPTION AND OPERATION: (Not Applicable)

DIAGNOSIS: (Not Applicable)

MAINTENANCE AND ADJUSTMENTS:

(Not Applicable)

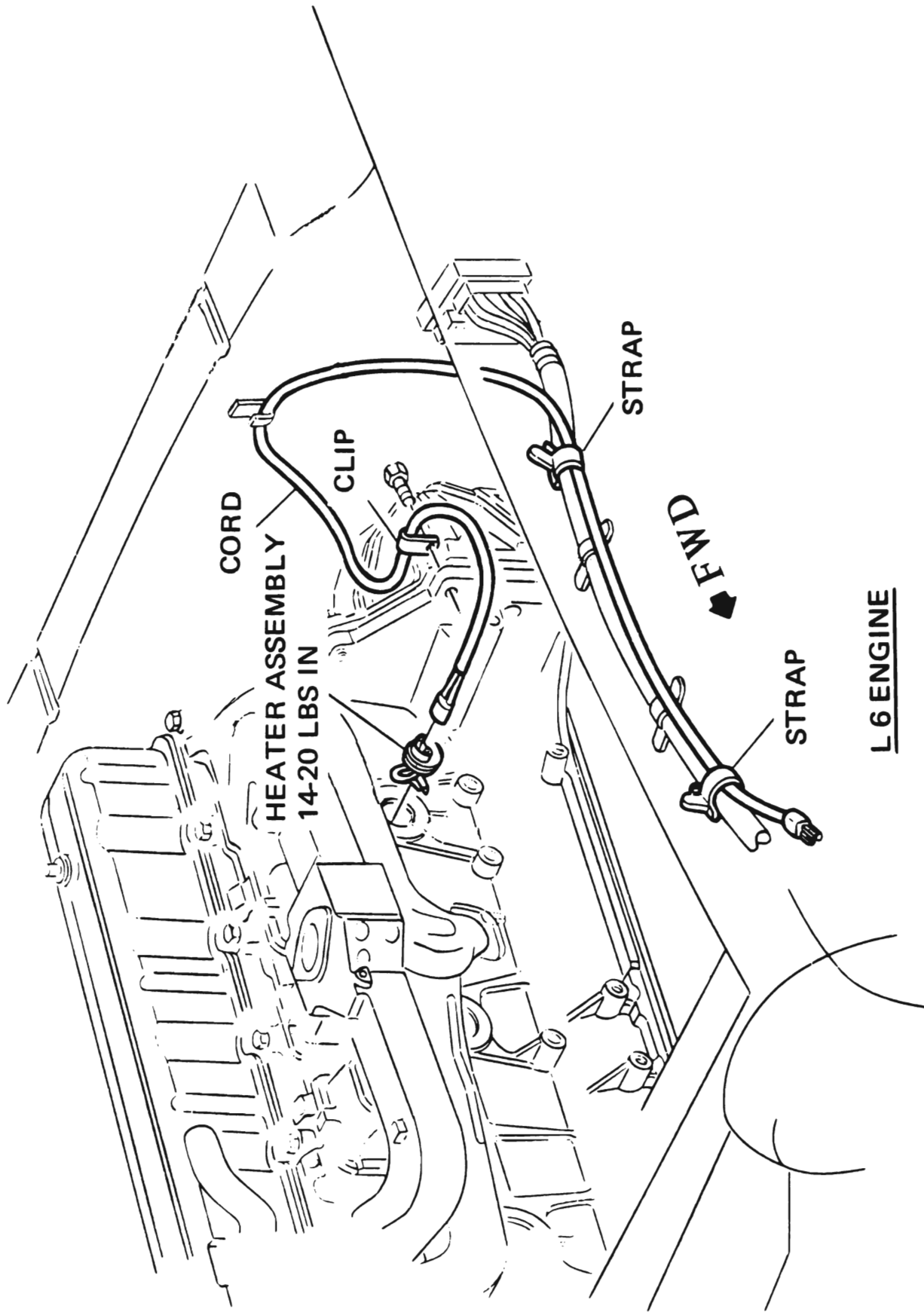
MAJOR REPAIR:

Removal and Installation - Refer to Illustrations

SPECIFICATIONS: (Not Applicable)

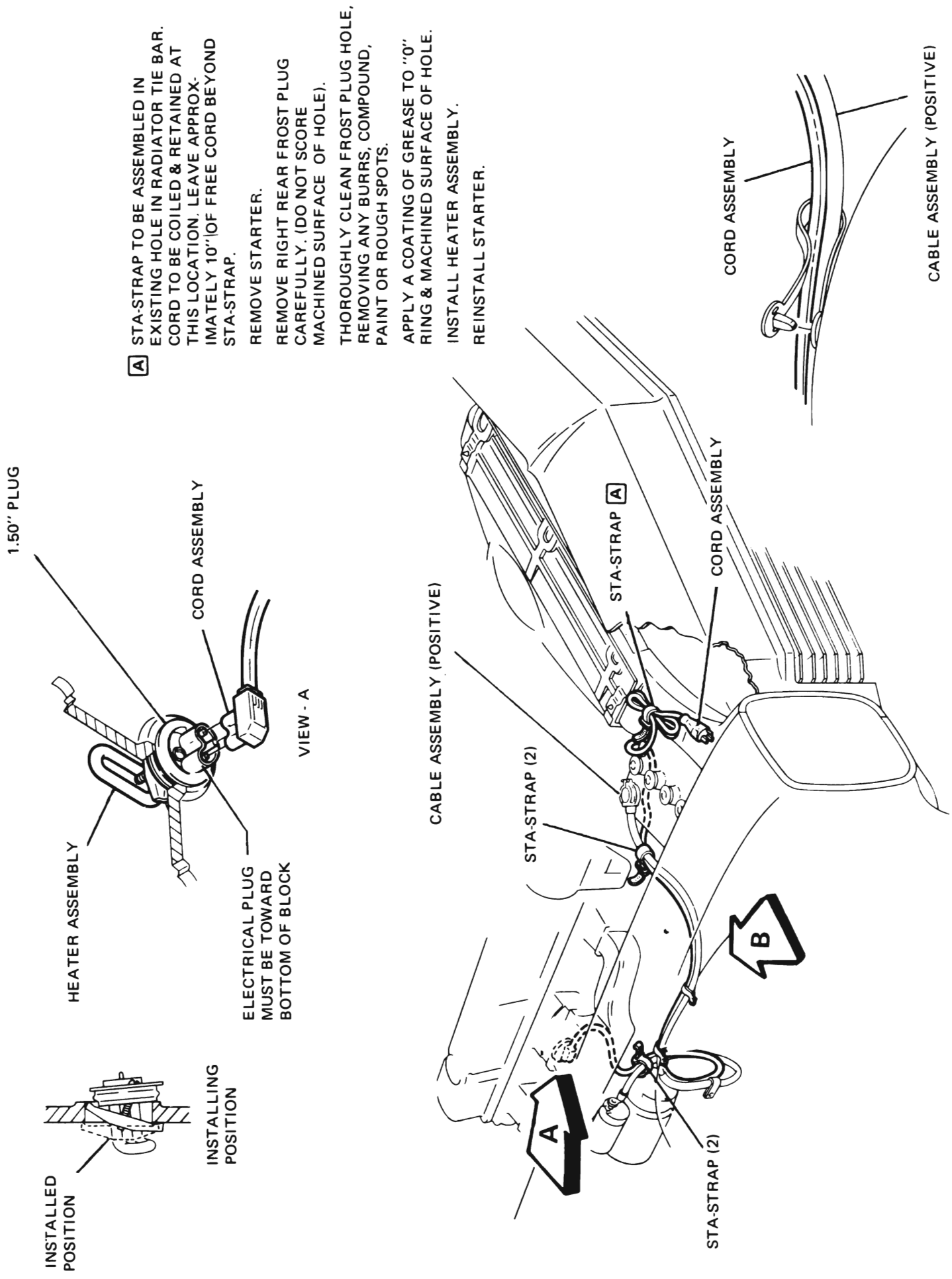
Index of Illustrations

Figure	Caption
9I-1	Engine Block Heater L-6 - X Series
9I-2	Engine Block Heater 350 CID - X Series
9I-3	Rear Window Defogger Wiring - X Series
9I-4	Underhood Lamp - X Series
9I-5	Deck Lid Release - A Series
9I-6	Deck Lid Release - A Series
9I-7	Wiring - Heated Glass Rear Defogger - A Series
9I-8	Wiring - Heated Glass Rear Defogger - A Series
9I-10	Rear Defogger (Blower Wiring) - A Series
9I-11	Tailgate Release - A Series
9I-12	Engine Block Heater - 350 Engine - A Series
9I-13	Engine Block Heater - 455 Engine - A Series
9I-14	Shock Absorbers - Superlift - Coupes and Sedans - A Series
9I-15	Shock Absorbers - Superlift - Coupes and Sedans - A Series
9I-16	Shock Absorbers - Superlift - Wagon - A Series
9I-17	Thermo Gauge and Oil Pressure - Gauge Option - A Series
9I-18	Accessory Harness to Fuse Block - A Series
9I-20	Engine Block Heater - 350 Engine - B Series
9I-21	Engine Block Heater - 455 Engine - B-C-E Series
9I-22	Shock Absorbers - Superlift - Sedans and Coupes - B-C-E Series
9I-23	Shock Absorbers - Superlift - Sedans and Coupes - B-C-E Series
9I-24	Shock Absorbers - Superlift - Wagon - B Series
9I-25	Compass Installation - Typical - All Series
9I-26	Remote Mirror Control - Right Side - B-C-E Series
	Decimal Equivalents and Tap Drill Sizes
	Conversion Tables



4B9I01

Figure 91-1 Engine Block Heater L-6 - X Series



A STA-STRAP TO BE ASSEMBLED IN EXISTING HOLE IN RADIATOR TIE BAR. CORD TO BE COILED & RETAINED AT THIS LOCATION. LEAVE APPROXIMATELY 10" OF FREE CORD BEYOND STA-STRAP.

REMOVE STARTER.

REMOVE RIGHT REAR FROST PLUG CAREFULLY. (DO NOT SCORE MACHINED SURFACE OF HOLE).

THOROUGHLY CLEAN FROST PLUG HOLE, REMOVING ANY BURRS, COMPOUND, PAINT OR ROUGH SPOTS.

APPLY A COATING OF GREASE TO "O" RING & MACHINED SURFACE OF HOLE.

INSTALL HEATER ASSEMBLY.

REINSTALL STARTER.

Figure 91-2 Engine Block Heater - 350 CID - X Series

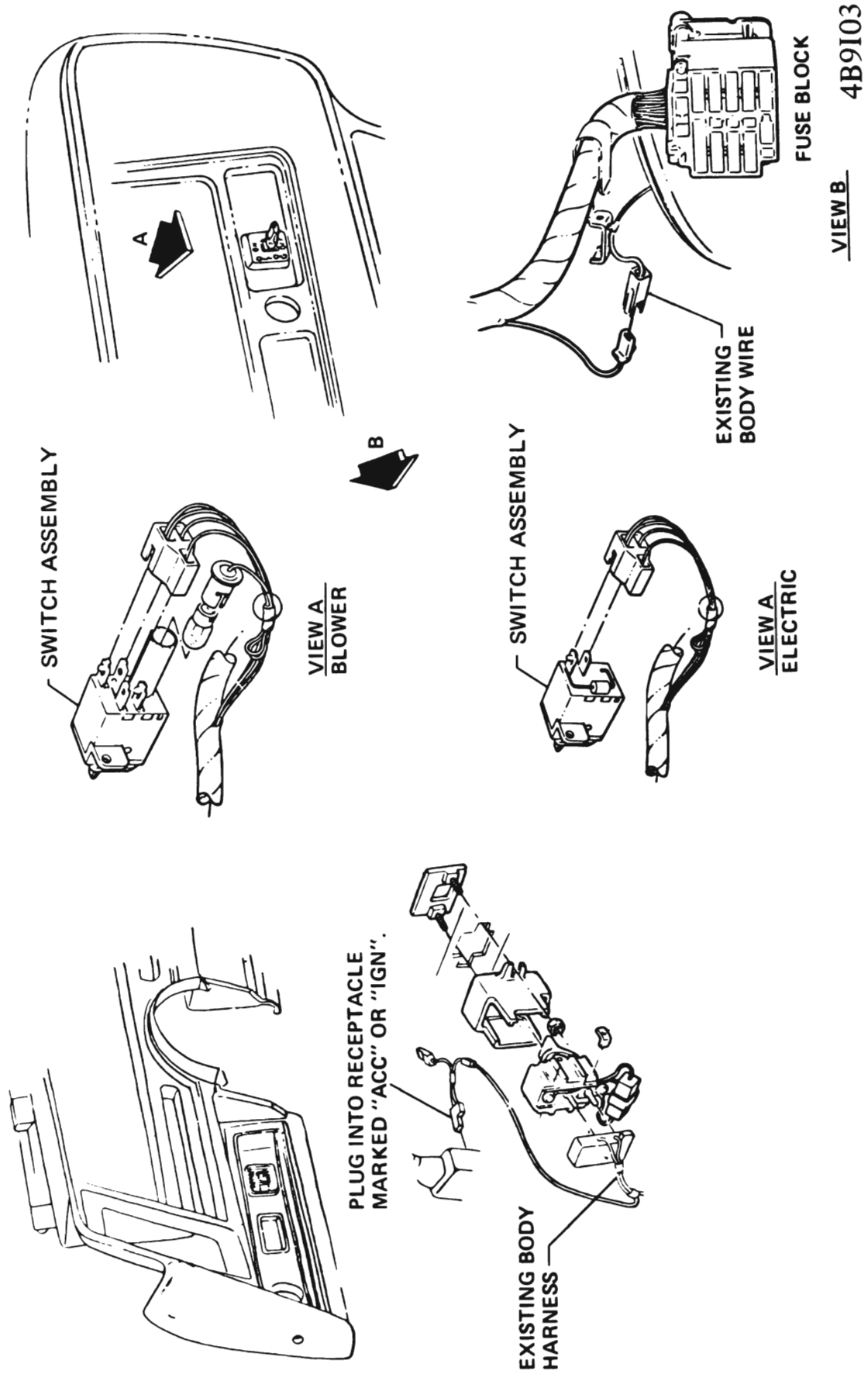


Figure 91-3 Rear Window Defogger Wiring - X Series

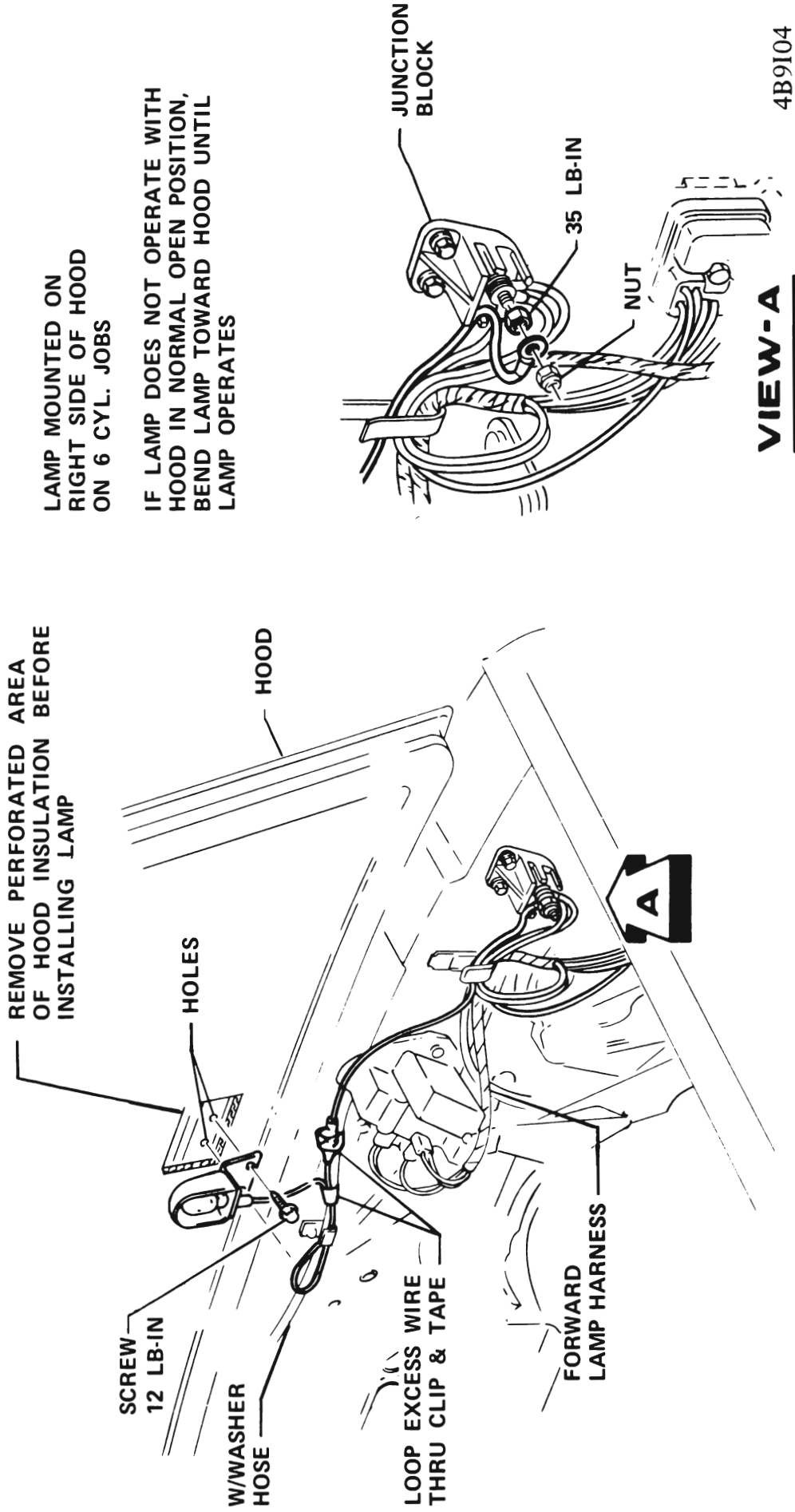


Figure 91-4 Underhood lamp - X Series

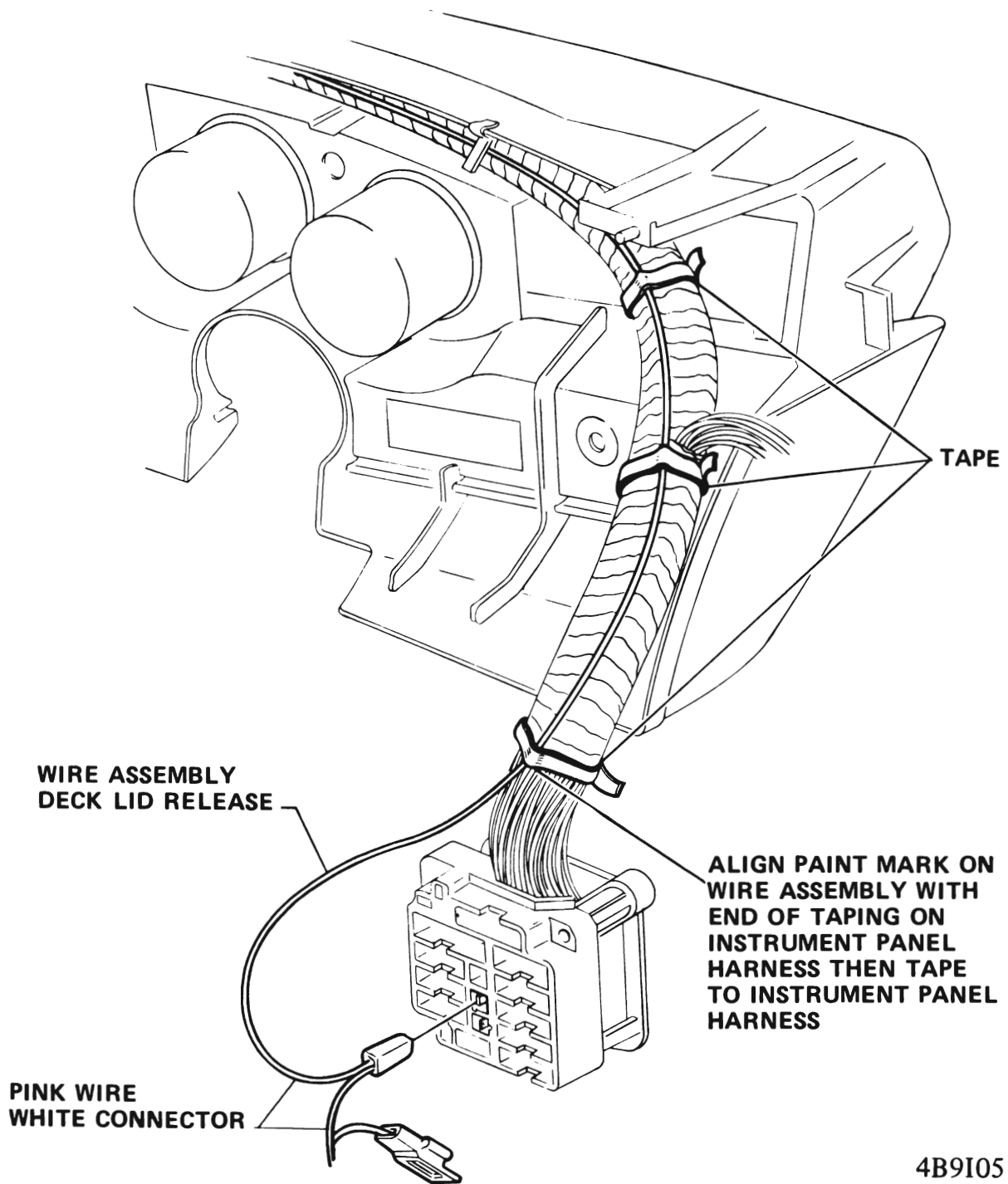


Figure 91-5 Deck Lid Release - A Series

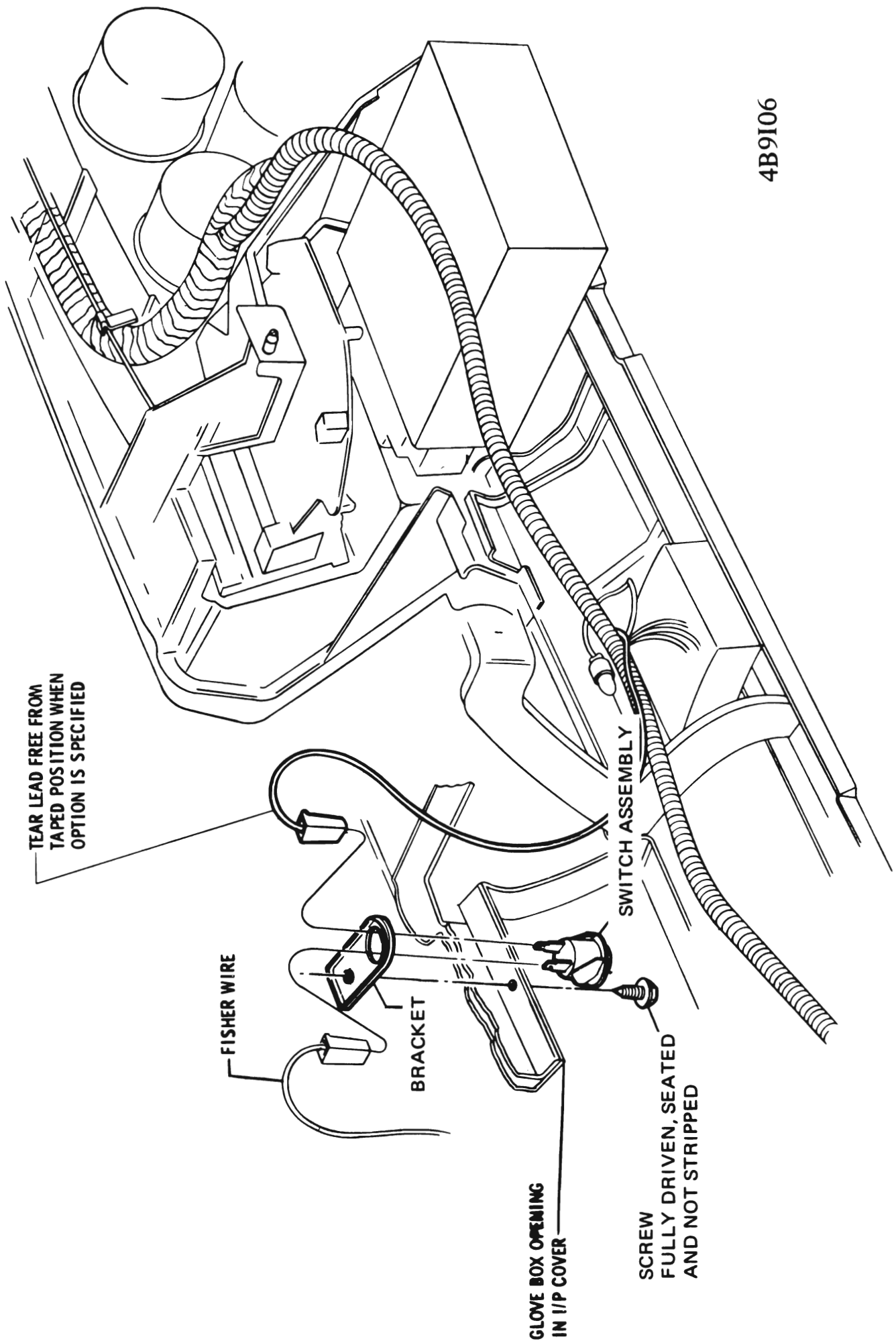
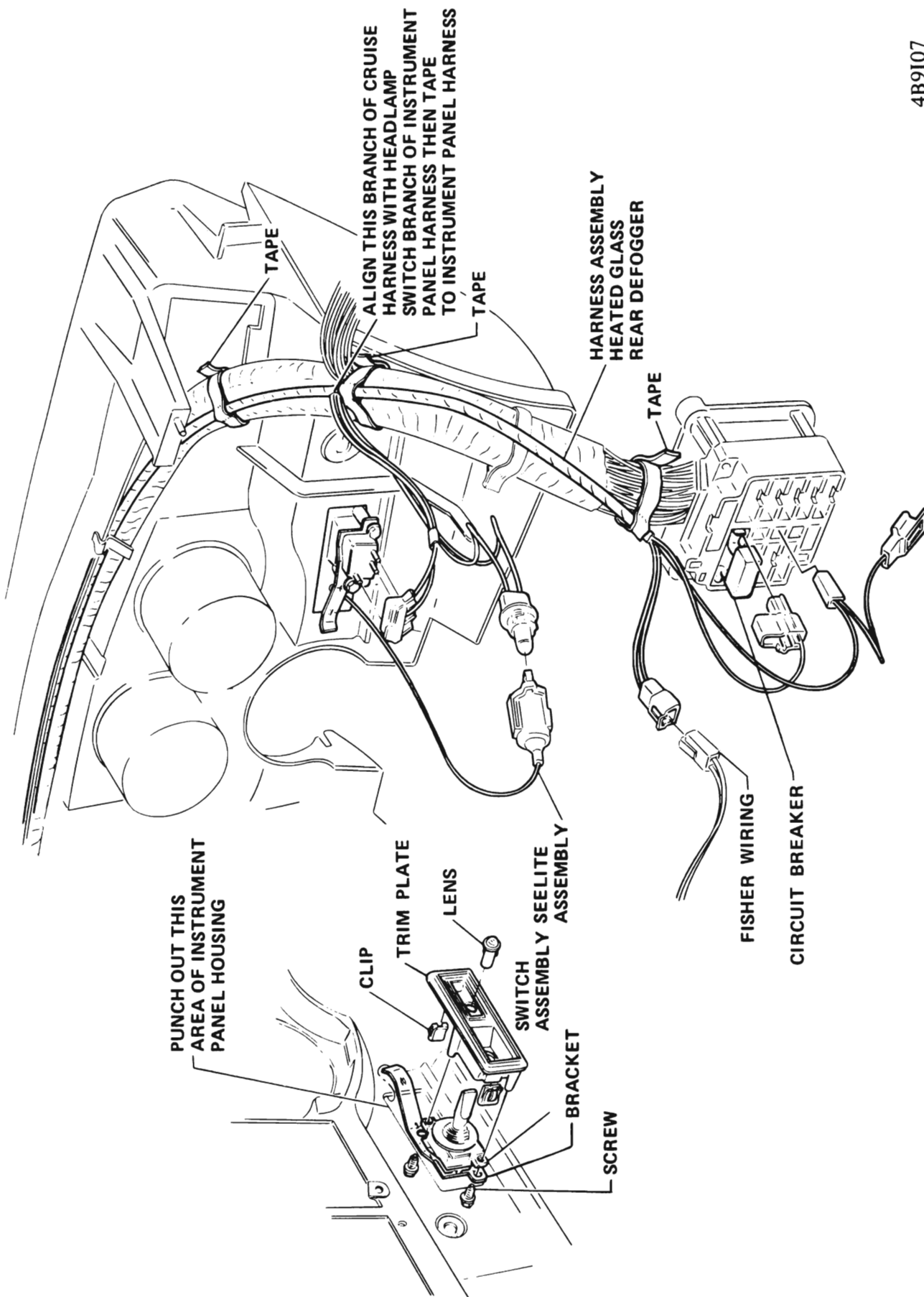
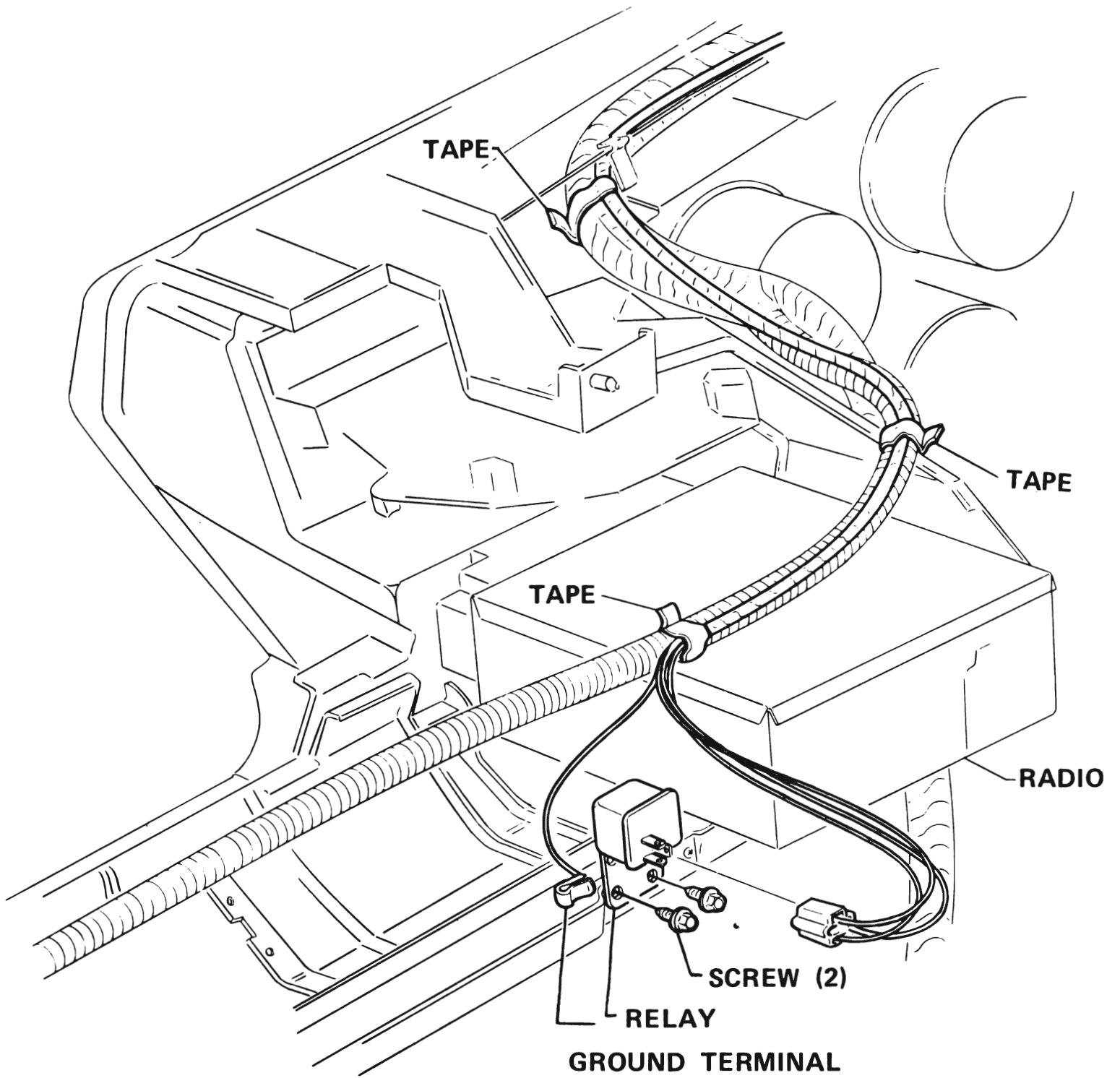


Figure 91-6 Deck Lid Release - A Series



4B9I07

Figure 91-7 Wiring - Heated Glass Rear Defogger - A Series



4B9I08

Figure 9I-8 Wiring - Heated Glass Rear Defogger - A Series

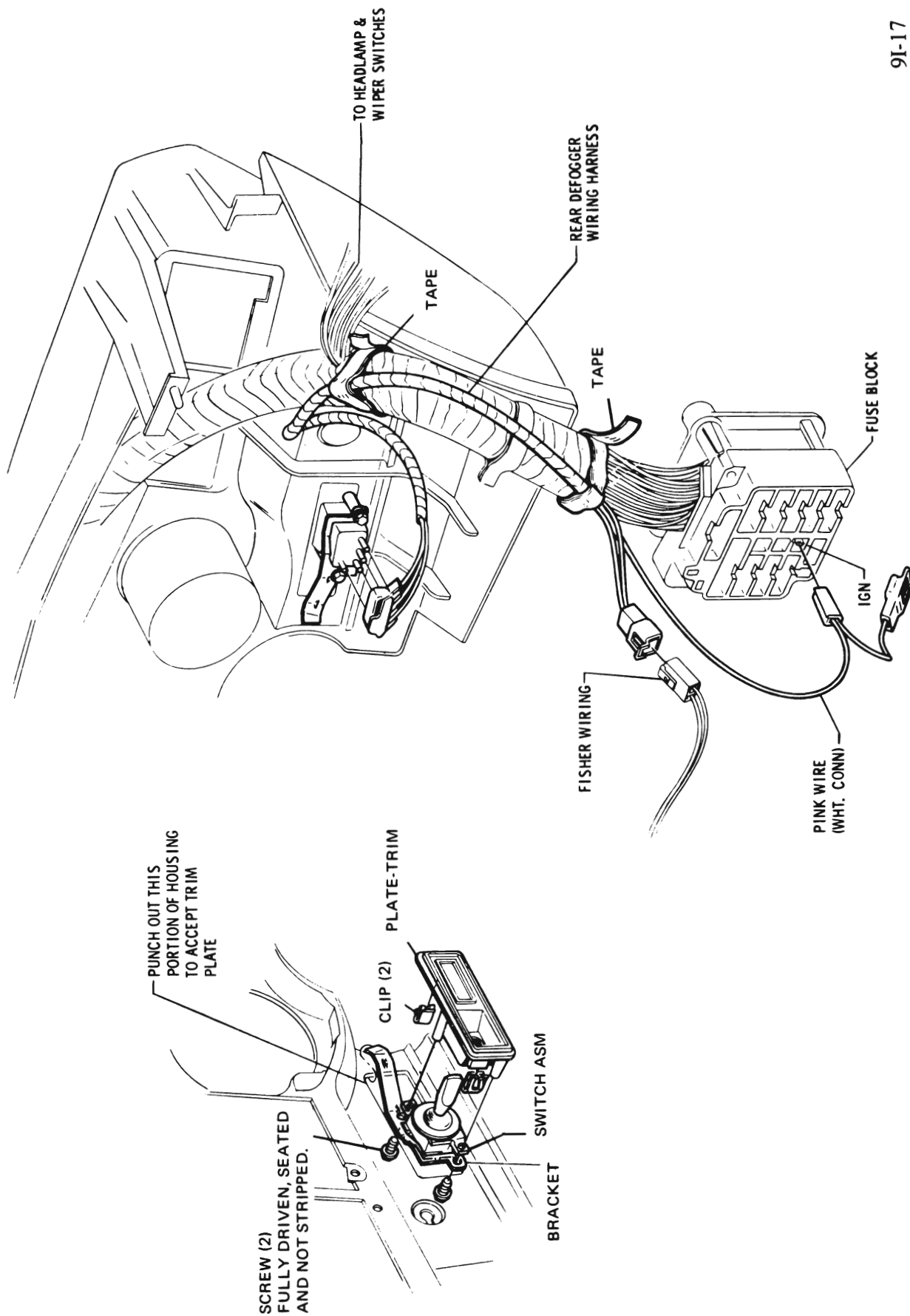
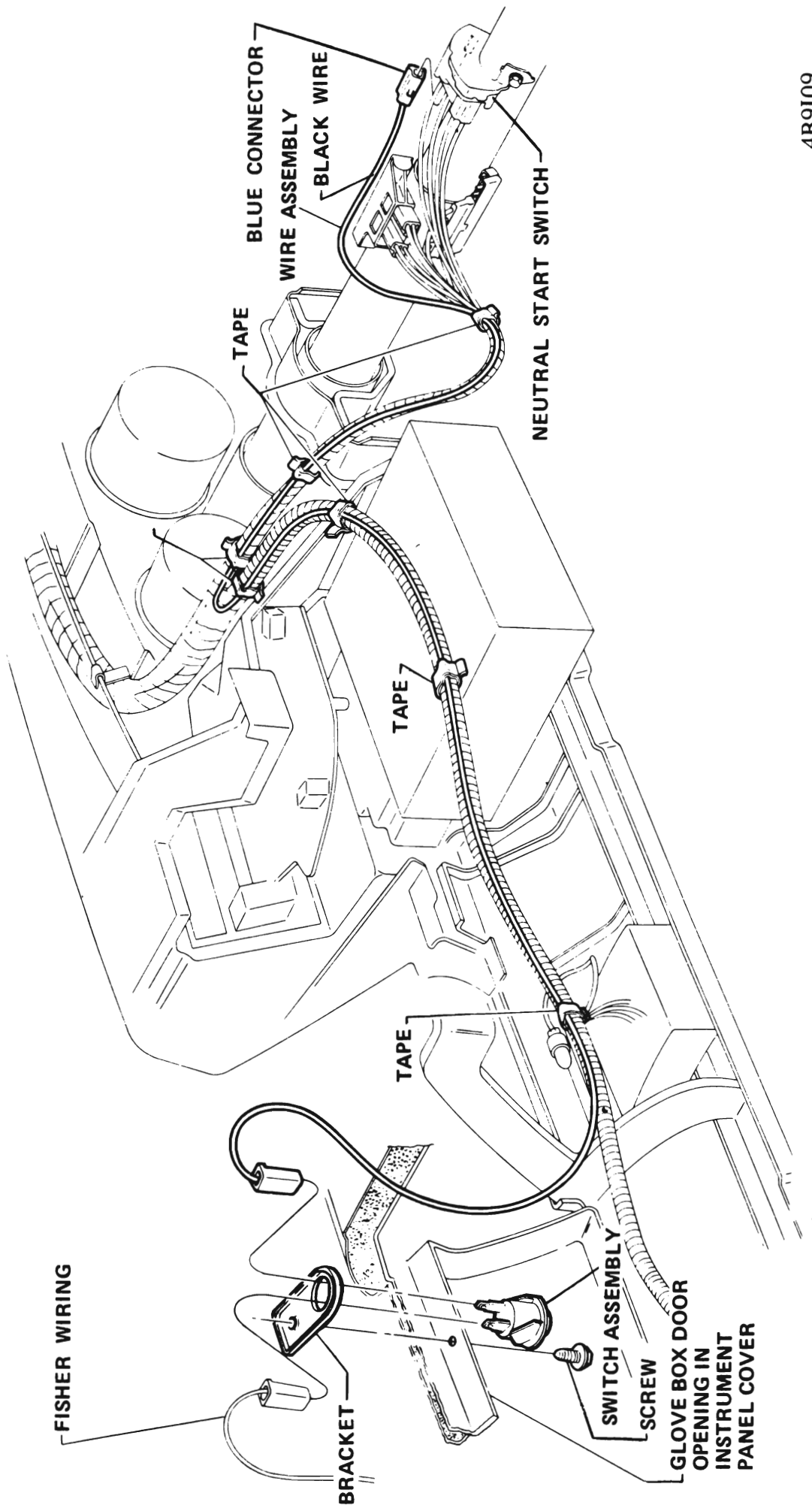
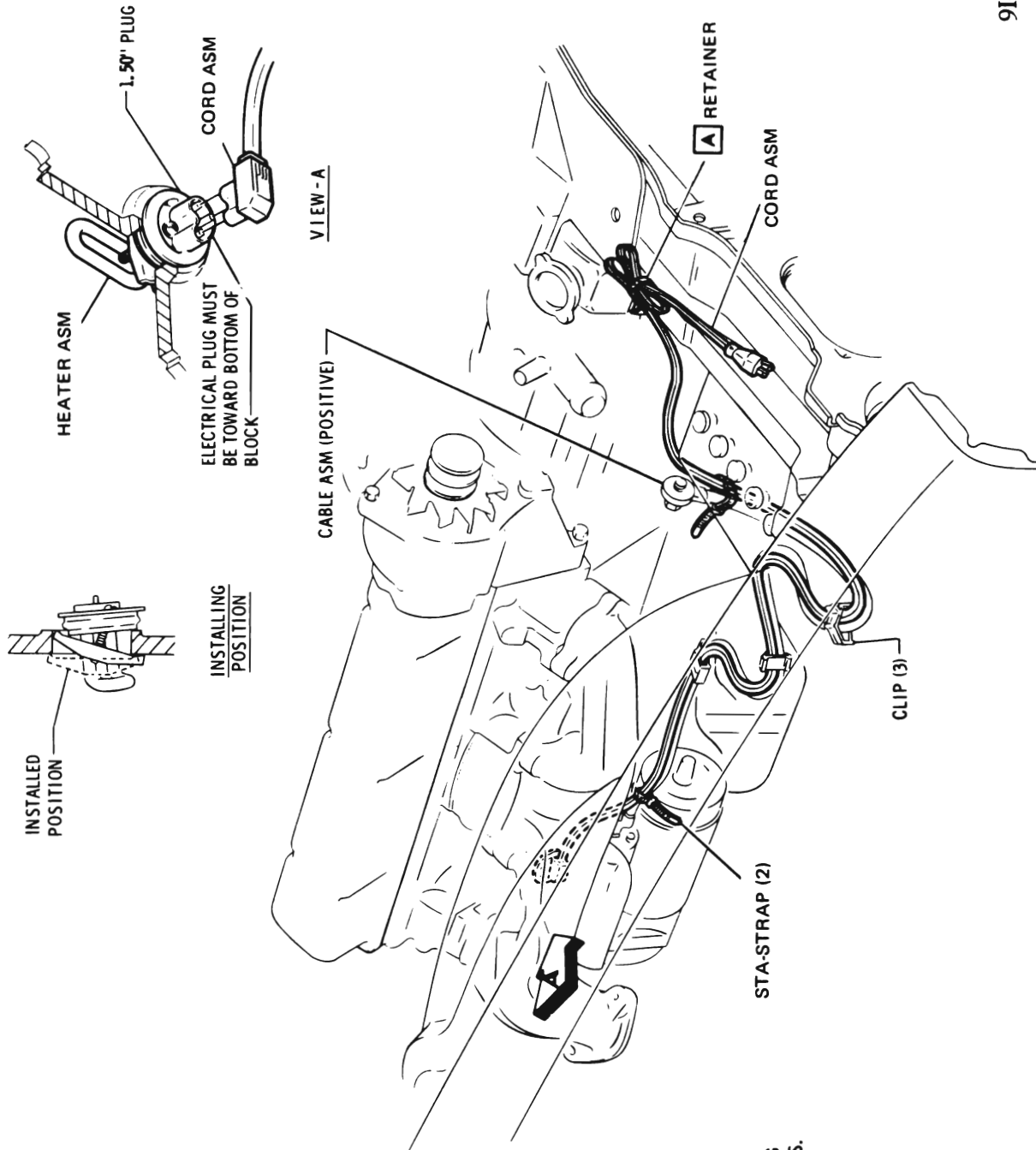


Figure 91-10 Rear Defogger (Blower Wiring) - A Series



4B9I09

Figure 9I-11 Tailgate Release - A Series



A RETAINER TO BE ASSEMBLED IN EXISTING HOLE IN RADIATOR TIE BAR. CORD TO BE COILED & RETAINED AT THIS LOCATION. LEAVE APPROXIMATELY 10" OF FREE CORD BEYOND RETAINER.

REMOVE STARTER.

REMOVE RIGHT REAR FROST PLUG CAREFULLY (DO NOT SCORE MACHINED SURFACE OF HOLE).

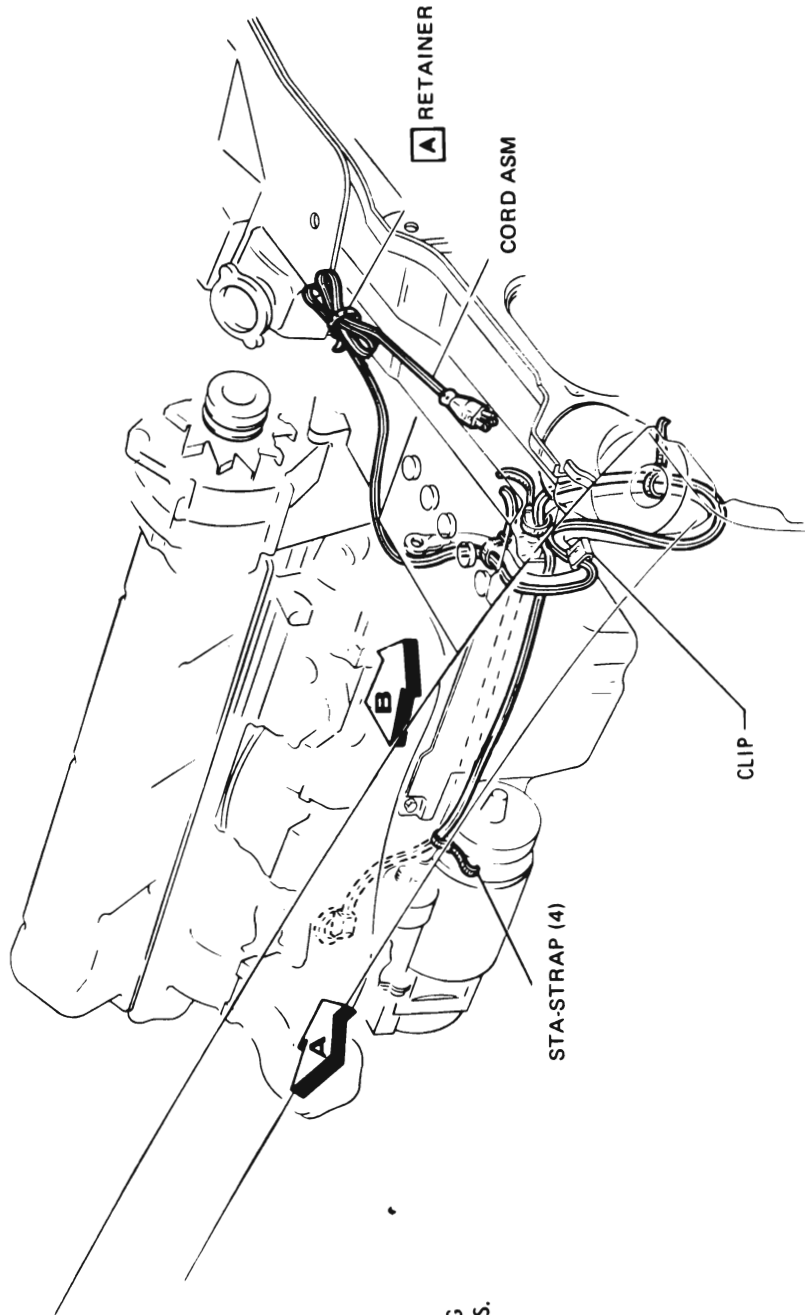
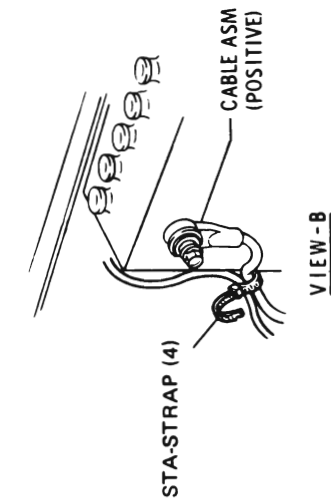
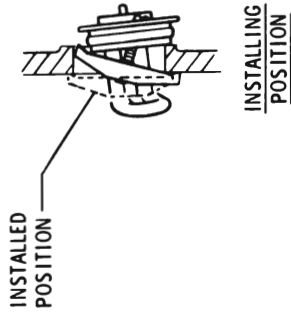
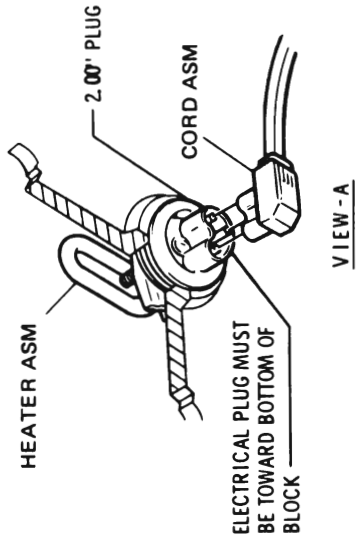
THOROUGHLY CLEAN FROST PLUG HOLE, REMOVING ANY BURRS, COMPOUND, PAINT OR ROUGH SPOTS.

APPLY A COATING OF GREASE TO "O" RING & MACHINED SURFACE OF HOLE.

INSTALL HEATER ASSEMBLY.

REINSTALL STARTER.

Figure 91-12 Engine Block Heater - 350 Engine - A Series



A RETAINER TO BE ASSEMBLED IN EXISTING HOLE IN RADIATOR TIE BAR. CORD TO BE COILED & RETAINED AT THIS LOCATION. LEAVE APPROXIMATELY 10" OF FREE CORD BEYOND RETAINER.

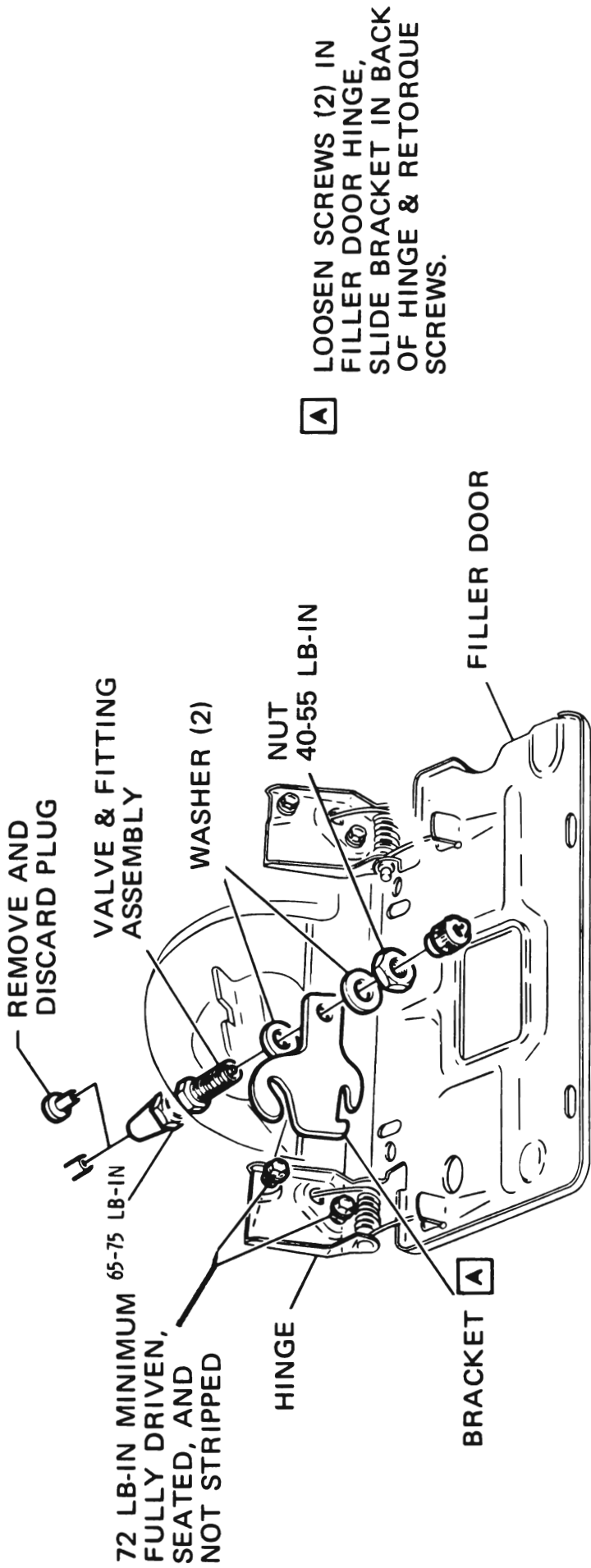
REMOVE STARTER.
 REMOVE RIGHT REAR FROST PLUG CAREFULLY (DO NOT SCORE MACHINED SURFACE OF HOLE).
 THOROUGHLY CLEAN FROST PLUG HOLE, REMOVING ANY BURRS, COMPOUND, PAINT OR ROUGH SPOTS.

APPLY A COATING OF GREASE TO "O" RING & MACHINED SURFACE OF HOLE.

INSTALL HEATER ASSEMBLY.

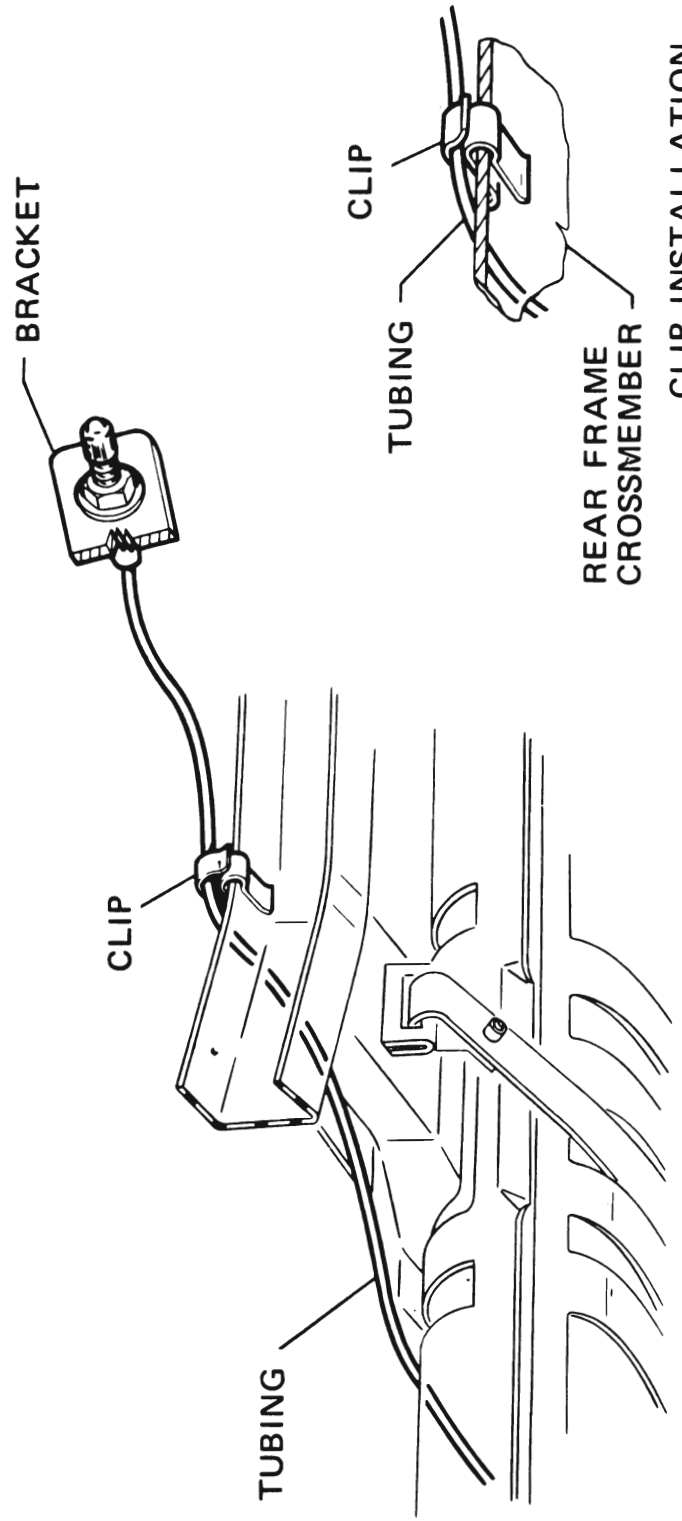
REINSTALL STARTER.

Figure 91-13 Engine Block Heater - 455 Engine - A Series



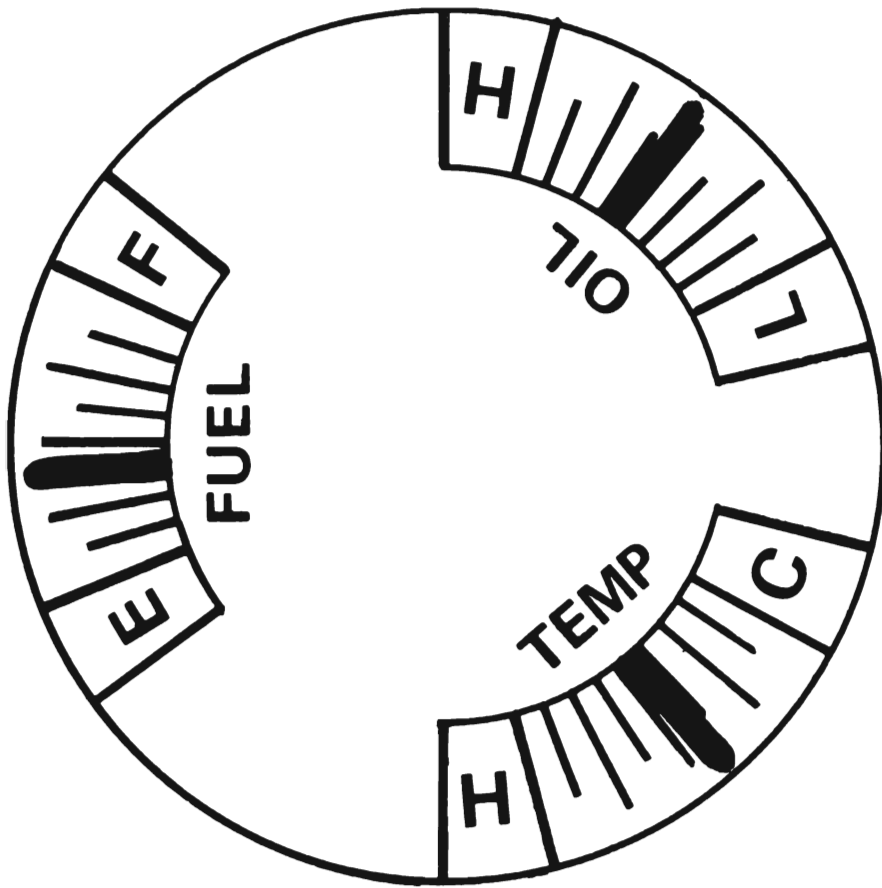
A LOOSEN SCREWS (2) IN FILLER DOOR HINGE, SLIDE BRACKET IN BACK OF HINGE & RETORQUE SCREWS.

VALVE INSTALLATION



4B9111

Figure 91-15 Shock Absorbers - Superlift - Coupes and Sedans - A Series



WATER TEMPERATURE GAUGE

This gauge registers the temperature of the coolant in the engine. When the engine is cold, the pointer will be at or just below the C; if the engine should become too hot, the pointer will rise beyond the half to the H. As the engine warms up, the pointer will rise above the C; this indicates that the heater can be used effectively and the car speed can be gradually increased. If the pointer ever rises beyond the half or to the H, the engine should be stopped immediately and the cause of overheating determined.

OIL PRESSURE GAUGE

This gauge registers the pressure of the oil in your engine. Before the engine is started, the pointer will be at or just below the L to indicate low (or no) oil pressure. When the engine is started, the pointer should rise above the L immediately. Sometimes while idling with a hot engine, the pointer may be near the L; however, if the pointer ever drops to the L while driving, the engine should be stopped immediately and the oil level checked.

Figure 91-17 Thermo Gauge and Oil Pressure Gauge Option - A Series

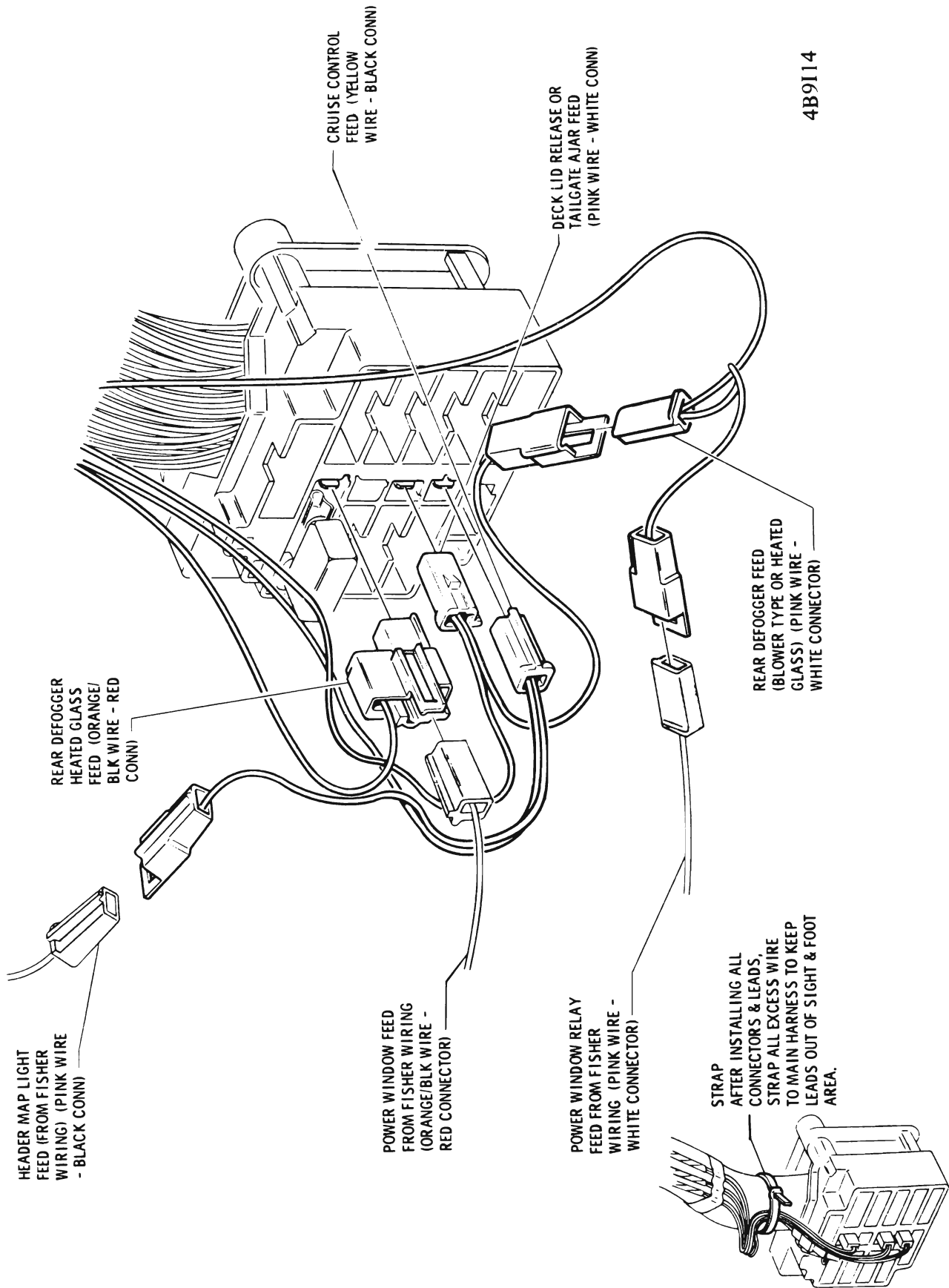
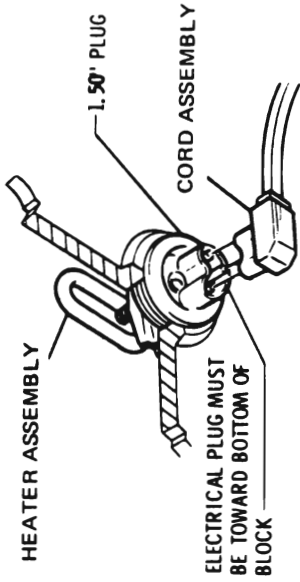
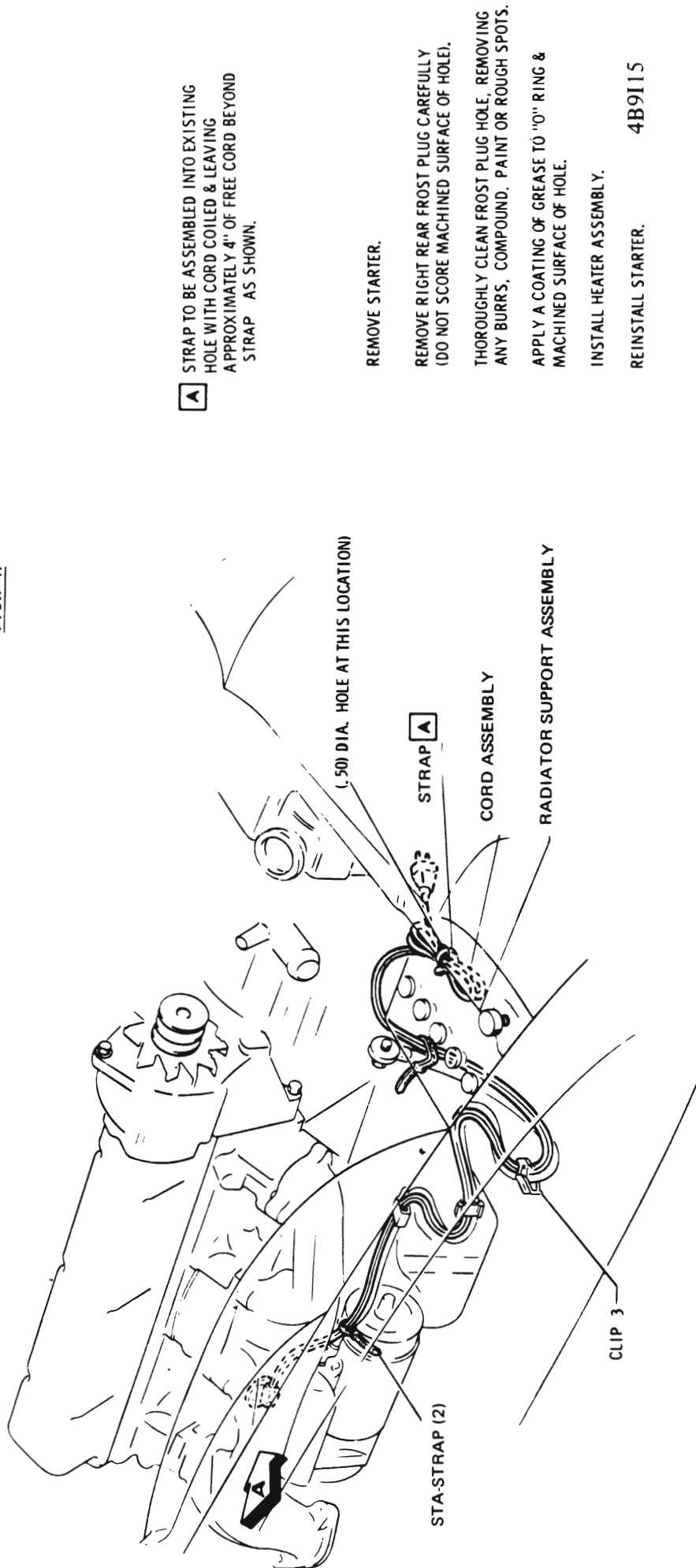
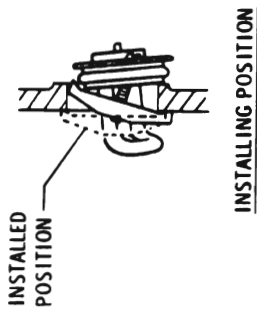


Figure 91-18 Accessory Harnesses to Fuse Block - A Series



VIEW - A



A STRAP TO BE ASSEMBLED INTO EXISTING HOLE WITH CORD COILED & LEAVING APPROXIMATELY 4" OF FREE CORD BEYOND STRAP - AS SHOWN.

REMOVE STARTER.

REMOVE RIGHT REAR FROST PLUG CAREFULLY (DO NOT SCORE MACHINED SURFACE OF HOLE).

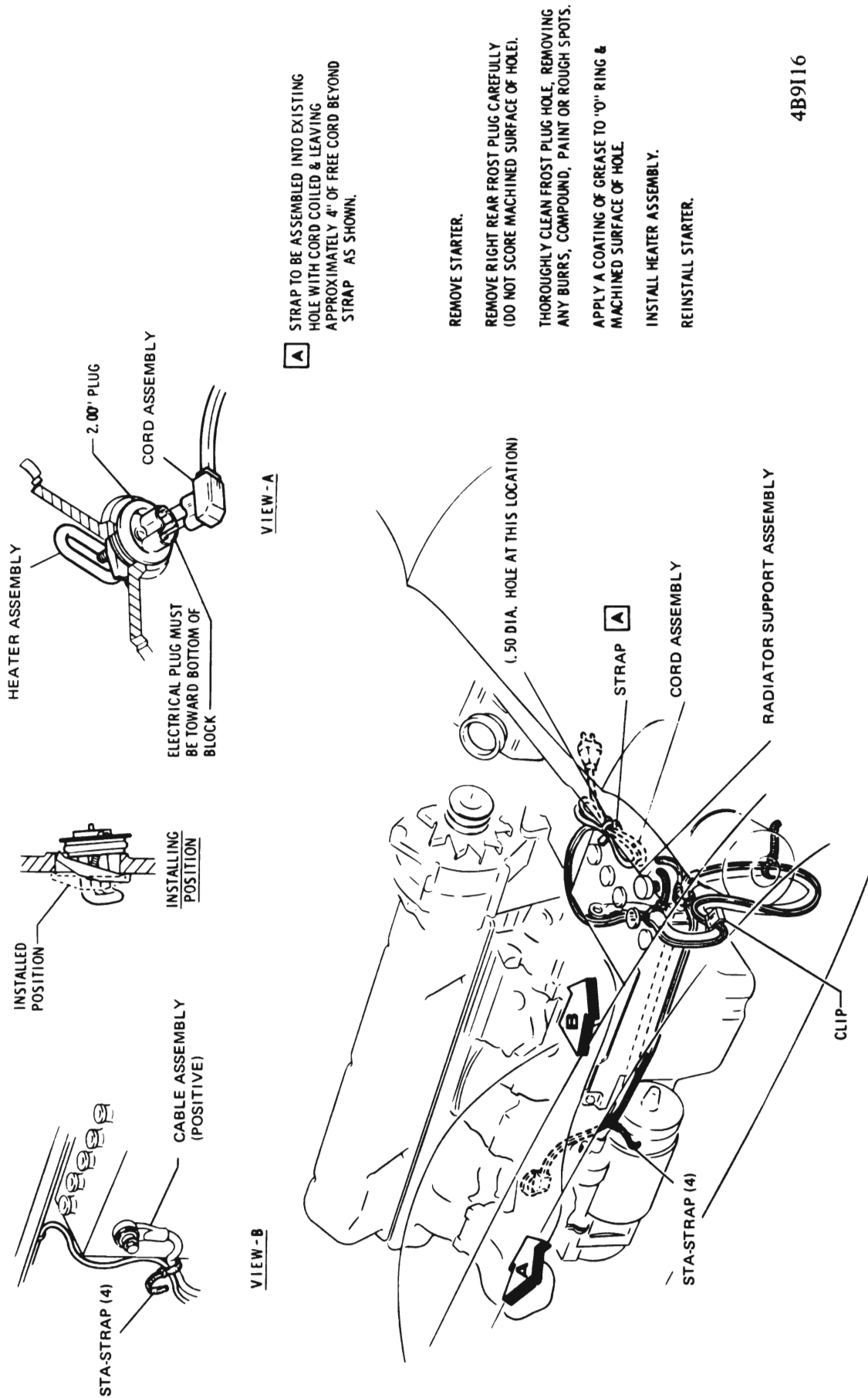
THOROUGHLY CLEAN FROST PLUG HOLE, REMOVING ANY BURRS, COMPOUND, PAINT OR ROUGH SPOTS.

APPLY A COATING OF GREASE TO 1/16" RING & MACHINED SURFACE OF HOLE.

INSTALL HEATER ASSEMBLY.

REINSTALL STARTER. 4B9I15

Figure 91-20 Engine Block Heater - 350 Engine - B Series



▲ STRAP TO BE ASSEMBLED INTO EXISTING HOLE WITH CORD COILED & LEAVING APPROXIMATELY 4" OF FREE CORD BEYOND STRAP AS SHOWN.

REMOVE STARTER.

REMOVE RIGHT REAR FROST PLUG CAREFULLY (DO NOT SCORE MACHINED SURFACE OF HOLE).

THOROUGHLY CLEAN FROST PLUG HOLE REMOVING ANY BURRS, COMPOUND, PAINT OR ROUGH SPOTS.

APPLY A COATING OF GREASE TO "O" RING & MACHINED SURFACE OF HOLE.

INSTALL HEATER ASSEMBLY.

REINSTALL STARTER.

4B9116

Figure 91-21 Engine Block Heater - 455 Engine - B-C-E Series

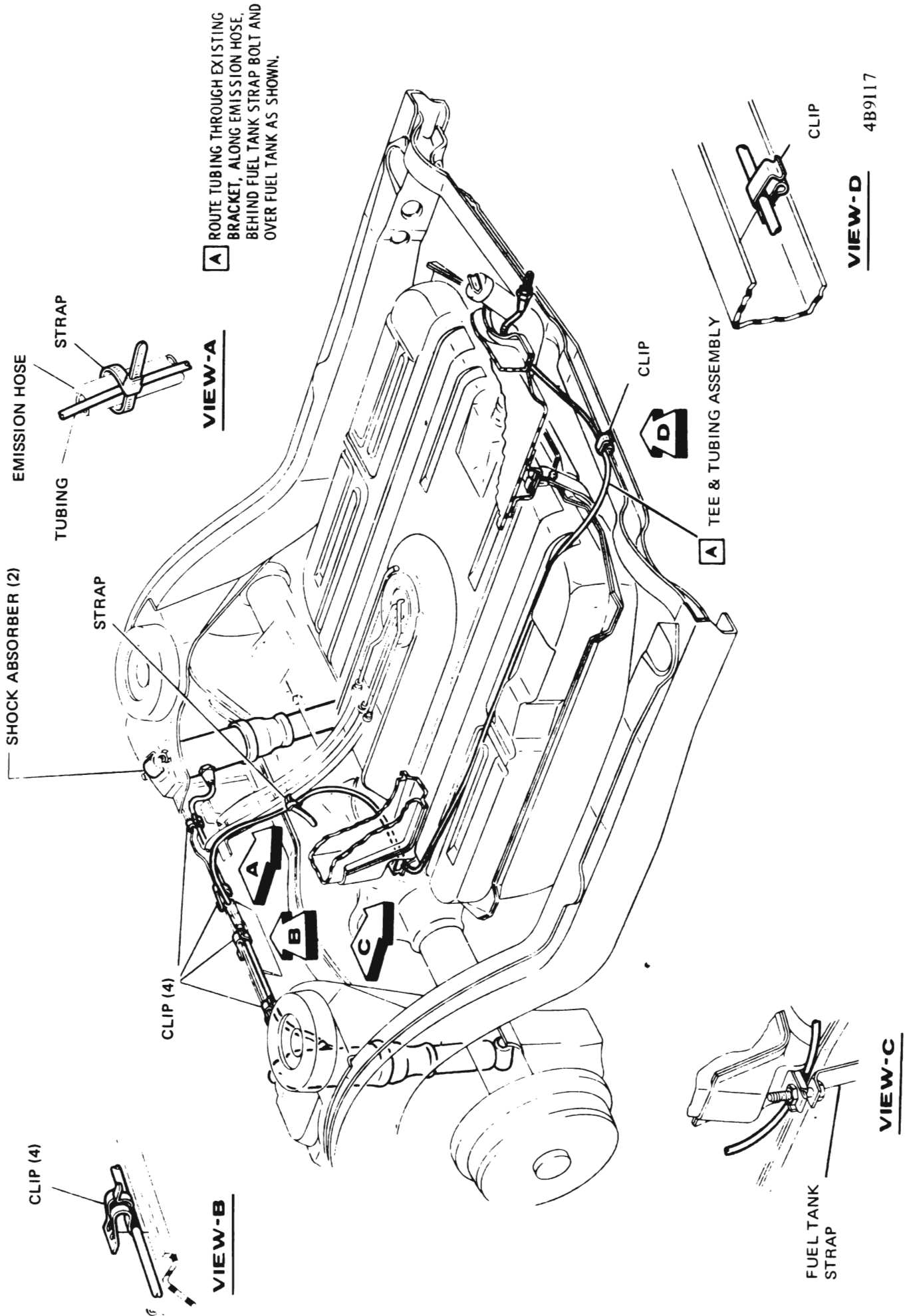


Figure 91-22 Shock Absorbers - Superlift - Sedans and Coupes - B-C-E Series

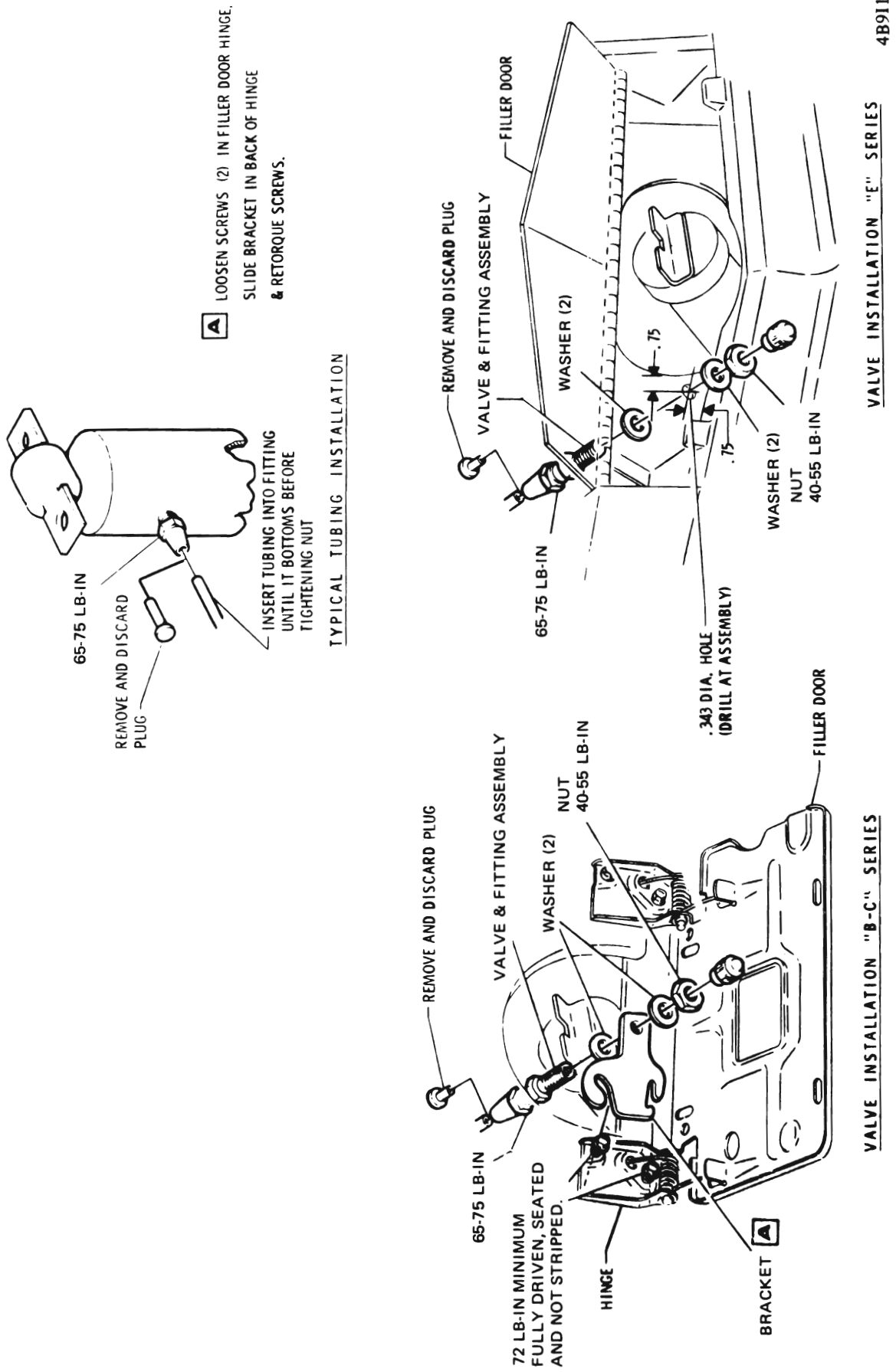
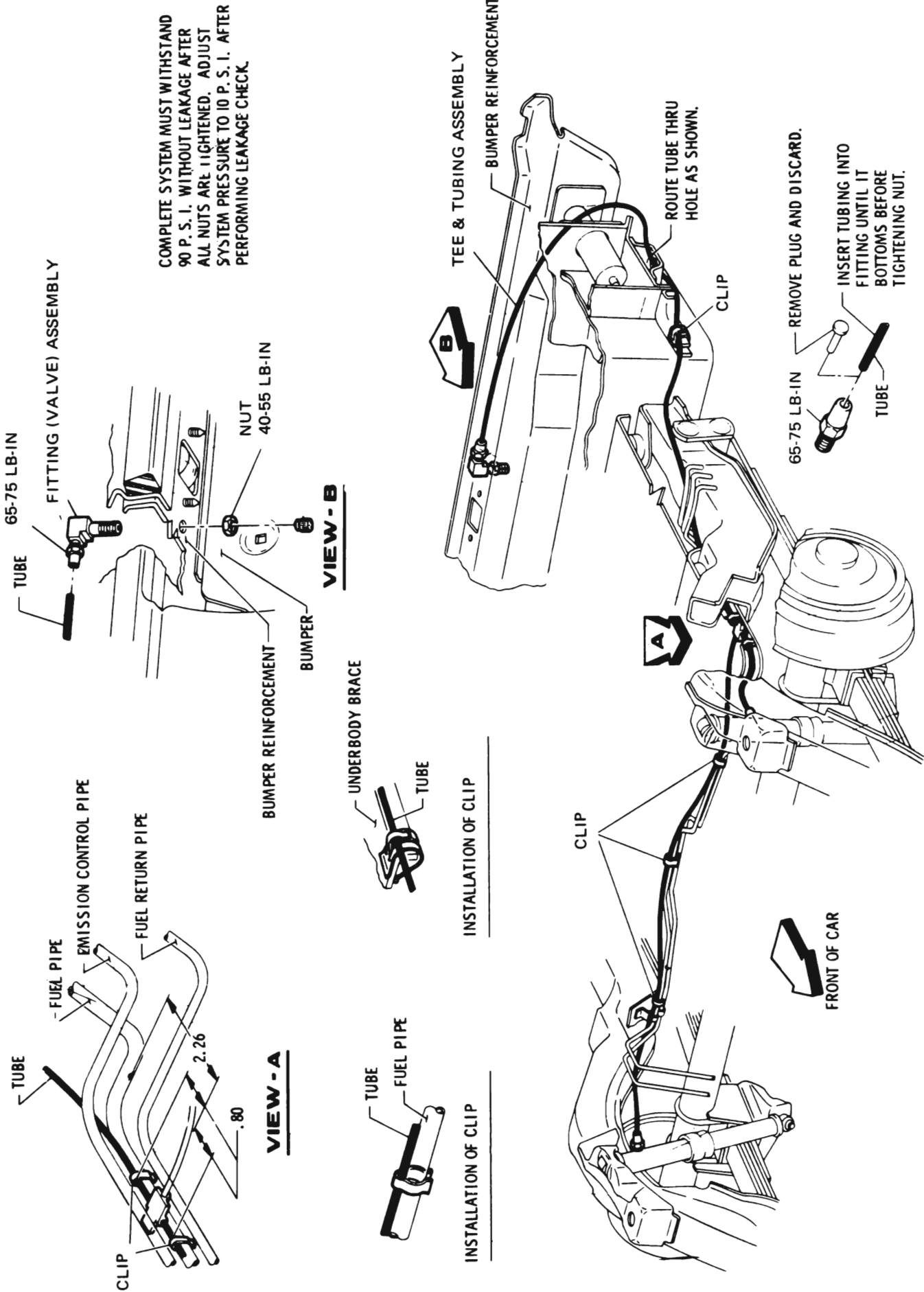


Figure 91-23 Shock Absorbers - Superlift - Sedans and Coupes - B-C-E Series



COMPLETE SYSTEM MUST WITHSTAND 90 P. S. I. WITHOUT LEAKAGE AFTER ALL NUTS ARE TIGHTENED. ADJUST SYSTEM PRESSURE TO 10 P. S. I. AFTER PERFORMING LEAKAGE CHECK.

65-75 LB-IN REMOVE PLUG AND DISCARD.
 INSERT TUBING UNTIL IT BOTTOMS BEFORE TIGHTENING NUT.
 TUBE

TYPICAL TUBE TO FITTING INSTALLATION

4B9119

Figure 91-24 Shock Absorbers - Superlift - Wagon - B Series

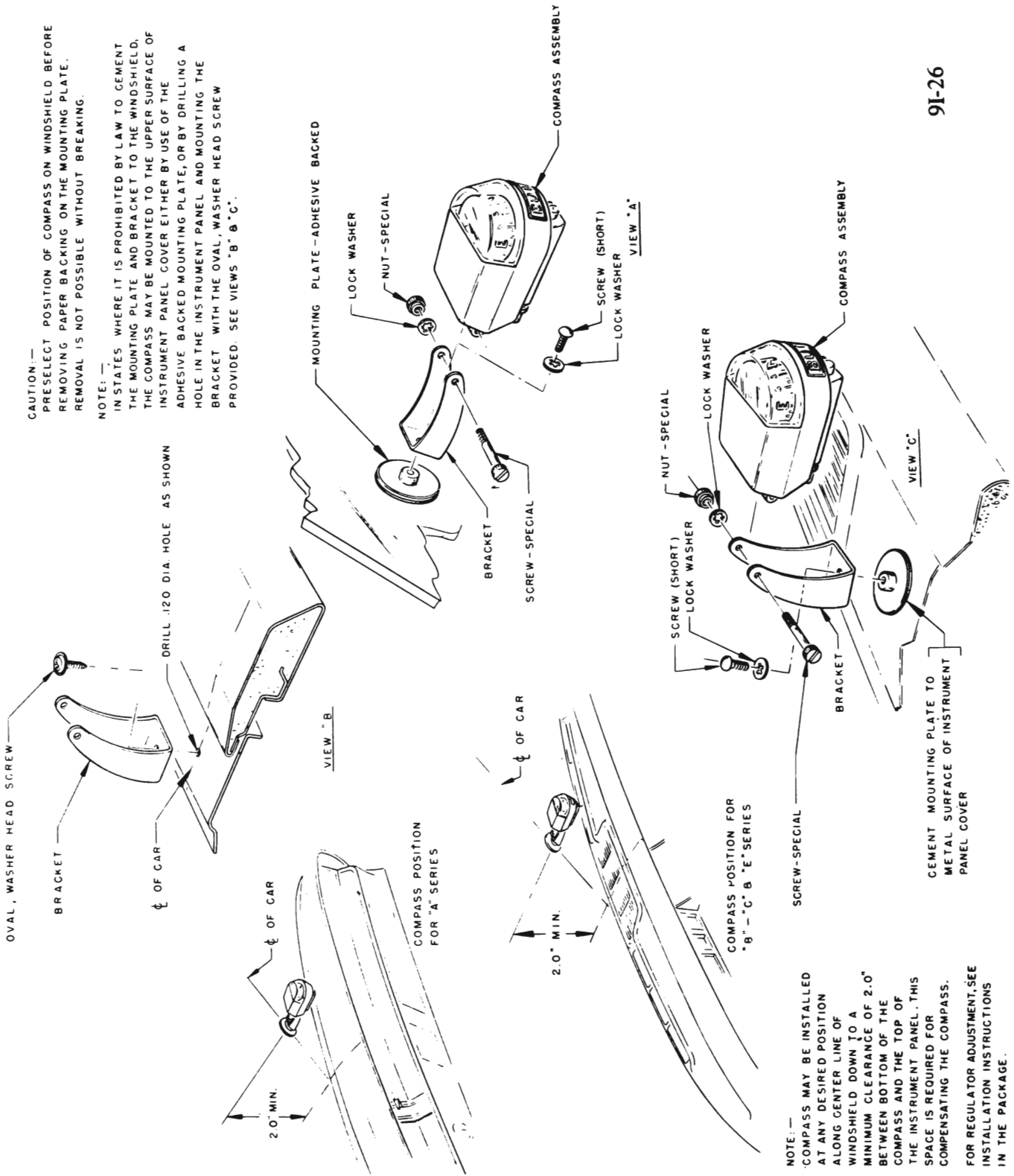


Figure 91-25 Compass Installation - Typical - All Series

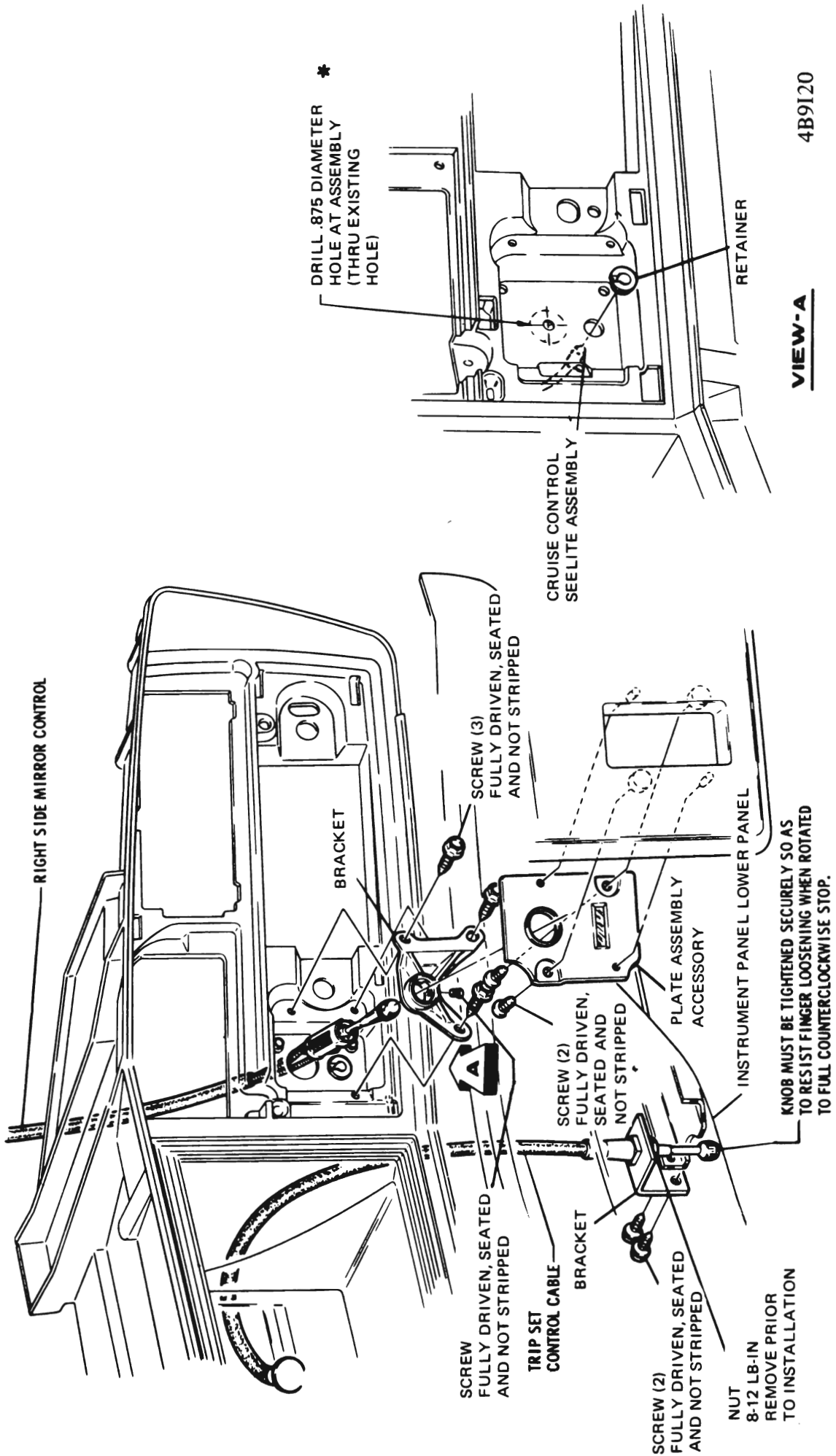


Figure 91-26 Remote Mirror Control - Right Side - B-C-E Series

TAPS · DIES · GAGES · SCREW PLATES · SCREW EXTRACTORS

DECIMAL EQUIVALENTS AND TAP DRILL SIZES

DRILL SIZE	DECIMAL	TAP SIZE	DRILL SIZE	DECIMAL	TAP SIZE	DRILL SIZE	DECIMAL	TAP SIZE
1/64	.0156		17	.1730		Q	.3320	3/8-24
1/32	.0312		16	.1770	12-24	R	.3390	
60	.0400		15	.1800		11/32	.3437	
59	.0410		14	.1820	12-28	S	.3480	
58	.0420		13	.1850	12-32	T	.3580	
57	.0430		3/16	.1875		23/64	.3594	
56	.0465		12	.1890		U	.3680	7/16-14
3/64	.0469	0-80	11	.1910		3/8	.3750	
55	.0520		10	.1935		V	.3770	
54	.0550	1-56	9	.1960		W	.3860	
53	.0595	1-64, 72	8	.1990	1/4-20	25/64	.3906	7/16-20
1/16	.0625		7	.2010		X	.3970	
52	.0635		13/64	.2031		Y	.4040	
51	.0670		6	.2040		13/32	.4062	
50	.0700	2-56, 64	5	.2055		Z	.4130	
49	.0730		4	.2090	1/4-28	27/64	.4219	1/2-13
48	.0760		3	.2130		7/16	.4375	
5/64	.0781		7/32	.2187		29/64	.4531	1/2-20
47	.0785	3-48	2	.2210		15/32	.4687	
46	.0810		1	.2280		31/64	.4844	9/16-12
45	.0820	3-56, 4-32	A	.2340		1/2	.5000	
44	.0860	4-36	15/64	.2344		33/64	.5156	9/16-18
43	.0890	4-40	B	.2380		17/32	.5312	5/8-11
42	.0935	4-48	C	.2420		35/64	.5469	
3/32	.0937		D	.2460		9/16	.5625	
41	.0960		E, 1/4	.2500	5/16-18	37/64	.5781	5/8-18
40	.0980		F	.2570		19/32	.5937	11/16-11
39	.0995		G	.2610		39/64	.6094	
38	.1015	5-40	17/64	.2656		5/8	.6250	11/16-16
37	.1040	5-44	H	.2660		41/64	.6406	
36	.1065	6-32	I	.2720	5/16-24	21/32	.6562	3/4-10
7/64	.1093		J	.2770		43/64	.6719	
35	.1100		K	.2810		11/16	.6875	3/4-16
34	.1110	6-36	9/32	.2812		45/64	.7031	
33	.1130	6-40	L	.2900		23/32	.7187	
32	.1160		M	.2950		47/64	.7344	
31	.1200		19/64	.2968		3/4	.7500	
1/8	.1250		N	.3020		49/64	.7656	7/8-9
30	.1285		5/16	.3125	3/8-16	25/32	.7812	
29	.1360	8-32, 36	O	.3160		51/64	.7969	
28	.1405	8-40	P	.3230		13/16	.8125	7/8-14
9/64	.1406		21/64	.3281		53/64	.8281	
27	.1440					27/32	.8437	
26	.1470					55/64	.8594	
25	.1495	10-24				7/8	.8750	1-8
24	.1520					57/64	.8906	
23	.1540					29/32	.9062	
5/32	.1562					59/64	.9219	
22	.1570	10-30				15/16	.9375	1-12, 14
21	.1590	10-32				61/64	.9531	
20	.1610					31/32	.9687	
19	.1660					63/64	.9844	
18	.1695					1	1.000	
11/64	.1719							

PIPE THREAD SIZES			
THREAD	DRILL	THREAD	DRILL
1/8-27	R	1 1/2-11 1/2	1 47/64
1/4-18	7/16	2-11 1/2	2 7/32
3/8-18	37/64	2 1/2-8	2 5/8
1/2-14	23/32	3-8	3 1/4
3/4-14	59/64	3 1/2-8	3 3/4
1-11 1/2	1 5/32	4-8	4 1/4
1 1/4-11 1/2	1 1/2		

DECIMAL AND METRIC EQUIVALENTS

Fractions	Decimal In.	Metric MM.	Fractions	Decimal In.	Metric MM.
1/64	.015625	.39688	33/64	.515625	13.09687
1/32	.03125	.79375	17/32	.53125	13.49375
3/64	.046875	1.19062	35/64	.546875	13.89062
1/16	.0625	1.58750	9/16	.5625	14.28750
5/64	.078125	1.98437	37/64	.578125	14.68437
3/32	.09375	2.38125	19/32	.59375	15.08125
7/64	.109375	2.77812	39/64	.609375	15.47812
1/8	.125	3.1750	5/8	.625	15.87500
9/64	.140625	3.57187	41/64	.640625	16.27187
5/32	.15625	3.96875	21/32	.65625	16.66875
11/64	.171875	4.36562	43/64	.671875	17.06562
3/16	.1875	4.76250	11/16	.6875	17.46250
13/64	.203125	5.15937	45/64	.703125	17.85937
7/32	.21875	5.55625	23/32	.71875	18.25625
15/64	.234375	5.95312	47/64	.734375	18.65312
1/4	.250	6.35000	3/4	.750	19.05000
17/64	.265625	6.74687	49/64	.765625	19.44687
9/32	.28125	7.14375	25/32	.78125	19.84375
19/64	.296875	7.54062	51/64	.796875	20.24062
5/16	.3125	7.93750	13/16	.8125	20.63750
21/64	.328125	8.33437	53/64	.828125	21.03437
11/32	.34375	8.73125	27/32	.84375	21.43125
23/64	.359375	9.12812	55/64	.859375	21.82812
3/8	.375	9.52500	7/8	.875	22.22500
25/64	.390625	9.92187	57/64	.890625	22.62187
13/32	.40625	10.31875	29/32	.90625	23.01875
27/64	.421875	10.71562	59/64	.921875	23.41562
7/16	.4375	11.11250	15/16	.9375	23.81250
29/64	.453125	11.50937	61/64	.953125	24.20937
15/32	.46875	11.90625	31/32	.96875	24.60625
31/64	.484375	12.30312	63/64	.984375	25.00312
1/2	.500	12.70000	1	1.00	25.40000

HOW TO USE CONVERSION CHARTS

Left Column is units of 10, (0, 10, 20, 30 etc.);
 Top Row is in units of one (0, 1, 2, 3, etc).

EXAMPLE: Feet to Inches Conversion Chart

feet	0	1	2	3	4	5	6	7	8	9	feet
	inches	inches	inches	inches	inches	inches	inches	inches	inches	inches	
..		12	24	36	48	60	72	84	96	108	..
10	120	132	144	156	168	180	192	204	216	228	10
20	240	252	264	276	288	300	312	324	336	348	20
30	360	372	384	396	408	420	432	444	456	468	30
40	480	492	504	516	528	540	552	564	576	588	40
50	600	612	624	636	648	660	672	684	696	708	50

12 feet equals 144 inches. Read across from 10 and down from 2.
 6 feet equals 72 inches. Read down from 6.

FEET TO METRES

ft	0	1	2	3	4	5	6	7	8	9	ft
	m	m	m	m	m	m	m	m	m	m	
..		0.305	0.610	0.914	1.219	1.524	1.829	2.134	2.438	2.743	..
10	3.048	3.353	3.658	3.962	4.267	4.572	4.877	5.182	5.486	5.791	10
20	6.096	6.401	6.706	7.010	7.315	7.620	7.925	8.230	8.534	8.839	20
30	9.144	9.449	9.754	10.058	10.363	10.668	10.973	11.278	11.582	11.887	30
40	12.192	12.497	12.802	13.106	13.411	13.716	14.021	14.326	14.630	14.935	40
50	15.240	15.545	15.850	16.154	16.459	16.764	17.069	17.374	17.678	17.983	50
60	18.288	18.593	18.898	19.202	19.507	19.812	20.117	20.422	20.726	21.031	60
70	21.336	21.641	21.946	22.250	22.555	22.860	23.165	23.470	23.774	24.079	70
80	24.384	24.689	24.994	25.298	25.603	25.908	26.213	26.518	26.822	27.127	80
90	27.432	27.737	28.042	28.346	28.651	28.956	29.261	29.566	29.870	30.175	90
100	30.480	30.785	31.090	31.394	31.699	32.004	32.309	32.614	32.918	33.223	100

METRES TO FEET

m	0	1	2	3	4	5	6	7	8	9	m
	ft	ft	ft	ft	ft	ft	ft	ft	ft	ft	
..		3.2808	6.5617	9.8425	13.1234	16.4042	19.6850	22.9659	26.2467	29.5276	..
10	32.8084	36.0892	39.3701	42.6509	45.9318	49.2126	52.4934	55.7743	59.0551	62.3360	10
20	65.6168	68.8976	72.1785	75.4593	78.7402	82.0210	85.3018	88.5827	91.8635	95.1444	20
30	98.4252	101.7060	104.9869	108.2677	111.5486	114.8294	118.1102	121.3911	124.6719	127.9528	30
40	131.2336	134.5144	137.7953	141.0761	144.3570	147.6378	150.9186	154.1995	157.4803	160.7612	40
50	164.0420	167.3228	170.6037	173.8845	177.1654	180.4462	183.7270	187.0079	190.2887	193.5696	50
60	196.8504	200.1312	203.4121	206.6929	209.9738	213.2546	216.5354	219.8163	223.0971	226.3780	60
70	229.6588	232.9396	236.2205	239.5013	242.7822	246.0630	249.3438	252.6247	255.9055	259.1864	70
80	262.4672	265.7480	269.0289	272.3097	275.5906	278.8714	282.1522	285.4331	288.7139	291.9948	80
90	295.2756	298.5564	301.8373	305.1181	308.3990	311.6798	314.9606	318.2415	321.5223	324.8032	90
100	328.0840	331.3648	334.6457	337.9265	341.2074	344.4882	347.7690	351.0499	354.3307	357.6116	100

MILES TO KILOMETRES

mile	0	1	2	3	4	5	6	7	8	9	mile
	km	km	km	km	km	km	km	km	km	km	
--		1.609	3.219	4.828	6.437	8.047	9.656	11.265	12.875	14.484	--
10	16.093	17.703	19.312	20.921	22.531	24.140	25.750	27.359	28.968	30.578	10
20	32.187	33.796	35.406	37.015	38.624	40.234	41.843	43.452	45.062	46.671	20
30	48.280	49.890	51.499	53.108	54.718	56.327	57.936	59.546	61.155	62.764	30
40	64.374	65.983	67.593	69.202	70.811	72.421	74.030	75.639	77.249	78.858	40
50	80.467	82.077	83.686	85.295	86.905	88.514	90.123	91.733	93.342	94.951	50
60	96.561	98.170	99.779	101.39	103.00	104.61	106.22	107.83	109.44	111.04	60
70	112.65	114.26	115.87	117.48	119.09	120.70	122.31	123.92	125.53	127.14	70
80	128.75	130.36	131.97	133.58	135.19	136.79	138.40	140.01	141.62	143.23	80
90	144.84	146.45	148.06	149.67	151.28	152.89	154.50	156.11	157.72	159.33	90
100	160.93	162.54	164.15	165.76	167.37	168.98	170.59	172.20	173.81	175.42	100

KILOMETRES TO MILES

km	0	1	2	3	4	5	6	7	8	9	km
	mil	mil	mil	mil	mil	mil	mil	mil	mil	mil	
--		0.621	1.243	1.864	2.486	3.107	3.728	4.350	4.971	5.592	--
10	6.214	6.835	7.457	8.078	8.699	9.321	9.942	10.562	11.185	11.805	10
20	12.427	13.049	13.670	14.292	14.913	15.534	16.156	16.776	17.399	18.019	20
30	18.641	19.263	19.884	20.506	21.127	21.748	22.370	22.990	23.613	24.233	30
40	24.855	25.477	26.098	26.720	27.341	27.962	28.584	29.204	29.827	30.447	40
50	31.069	31.690	32.311	32.933	33.554	34.175	34.797	35.417	36.040	36.660	50
60	37.282	37.904	38.525	39.147	39.768	40.389	41.011	41.631	42.254	42.874	60
70	43.497	44.118	44.739	45.361	45.982	46.603	47.225	47.845	48.468	49.088	70
80	49.711	50.332	50.953	51.575	52.196	52.817	53.439	54.059	54.682	55.302	80
90	55.924	56.545	57.166	57.788	58.409	59.030	59.652	60.272	60.895	61.515	90
100	62.138	62.759	63.380	64.002	64.623	65.244	65.866	66.486	67.109	67.729	100

GALLONS (U.S.) TO LITRES

U.S. gal	0	1	2	3	4	5	6	7	8	9	U.S. gal
	L	L	L	L	L	L	L	L	L	L	
--		3.7854	7.5709	11.3563	15.1417	18.9271	22.7126	26.4980	30.2834	34.0638	--
10	37.8543	41.6397	45.4251	49.2105	52.9960	56.7814	60.5668	64.3523	68.1377	71.9231	10
20	75.7085	79.4940	83.2794	87.0648	90.8502	94.6357	98.4211	102.2065	105.9920	109.7774	20
30	113.5528	117.3482	121.1337	124.9191	128.7045	132.4899	136.2754	140.0608	143.8462	147.6316	30
40	151.4171	155.2025	158.9879	162.7734	166.5588	170.3442	174.1296	177.9151	181.7005	185.4859	40
50	189.2713	193.0568	196.8422	200.6276	204.4131	208.1985	211.9839	215.7693	219.5548	223.3402	50
60	227.1256	230.9110	234.6965	238.4819	242.2673	246.0527	249.8382	253.6236	257.4090	261.1945	60
70	264.9799	268.7653	272.5507	276.3362	280.1216	283.9070	287.6924	291.4779	295.2633	299.0487	70
80	302.8342	306.6196	310.4050	314.1904	317.9759	321.7613	325.5467	329.3321	333.1176	336.9030	80
90	340.6884	344.4738	348.2593	352.0447	355.8301	359.6156	363.4010	367.1864	370.9718	374.7573	90
100	378.5427	382.3281	386.1135	389.8990	393.6844	397.4698	401.2553	405.0407	408.8261	412.6115	100

LITRES TO GALLONS (U.S.)

L	0	1	2	3	4	5	6	7	8	9	L
	gal	gal	gal	gal	gal	gal	gal	gal	gal	gal	
--		0.2642	0.5283	0.7925	1.0567	1.3209	1.5850	1.8492	2.1134	2.3775	--
10	2.6417	2.9059	3.1701	3.4342	3.6984	3.9626	4.2267	4.4909	4.7551	5.0192	10
20	5.2834	5.5476	5.8118	6.0759	6.3401	6.6043	6.8684	7.1326	7.3968	7.6610	20
30	7.9251	8.1893	8.4535	8.7176	8.9818	9.2460	9.5102	9.7743	10.0385	10.3027	30
40	10.5668	10.8310	11.0952	11.3594	11.6235	11.8877	12.1519	12.4160	12.6802	12.9444	40
50	13.2086	13.4727	13.7369	14.0011	14.2652	14.5294	14.7936	15.0577	15.3219	15.5861	50
60	15.8503	16.1144	16.3786	16.6428	16.9069	17.1711	17.4353	17.6995	17.9636	18.2278	60
70	18.4920	18.7561	19.0203	19.2845	19.5487	19.8128	20.0770	20.3412	20.6053	20.8695	70
80	21.1337	21.3979	21.6620	21.9262	22.1904	22.4545	22.7187	22.9829	23.2470	23.5112	80
90	23.7754	24.0396	24.3037	24.5679	24.8321	25.0962	25.3604	25.6246	25.8888	26.1529	90
100	26.4171	26.6813	26.9454	27.2096	27.4738	27.7380	28.0021	28.2663	28.5305	28.7946	100

GALLONS (IMP.) TO LITRES

IMP gal	0	1	2	3	4	5	6	7	8	9	IMP gal
	L	L	L	L	L	L	L	L	L	L	
--		4.5460	9.0919	13.6379	18.1838	22.7298	27.2758	31.8217	36.3677	40.9136	--
10	45.4596	50.0056	54.5515	59.0975	63.6434	68.1894	72.2354	77.2813	81.8275	86.3732	10
20	90.9192	95.4652	100.0111	104.5571	109.1030	113.6490	118.1950	122.7409	127.2869	131.8328	20
30	136.3788	140.9248	145.4707	150.0167	154.5626	159.1086	163.6546	168.0005	172.7465	177.2924	30
40	181.8384	186.3844	190.9303	195.4763	200.0222	204.5682	209.1142	213.6601	218.2061	222.7520	40
50	227.2980	231.8440	236.3899	240.9359	245.4818	250.0278	254.5738	259.1197	263.6657	268.2116	50
60	272.7576	277.3036	281.8495	286.3955	290.9414	295.4874	300.0334	304.5793	309.1253	313.6712	60
70	318.2172	322.7632	327.3091	331.8551	336.4010	340.9470	345.4930	350.0389	354.5849	359.1308	70
80	363.6768	368.2223	372.7687	377.3147	381.8606	386.4066	390.9526	395.4985	400.0445	404.5904	80
90	409.1364	413.6824	418.2283	422.7743	427.3202	431.8662	436.4122	440.9581	445.9041	450.0500	90
100	454.5960	459.1420	463.6879	468.2339	472.7798	477.3258	481.8718	486.4177	490.9637	495.5096	100

LITRES TO GALLONS (IMP.)

L	0	1	2	3	4	5	6	7	8	9	L
	gal	gal	gal	gal	gal	gal	gal	gal	gal	gal	
--		0.2200	0.4400	0.6599	0.8799	1.0999	1.3199	1.5398	1.7598	1.9798	--
10	2.1998	2.4197	2.6397	2.8597	3.0797	3.2996	3.5196	3.7396	3.9596	4.1795	10
20	4.3995	4.6195	4.8395	5.0594	5.2794	5.4994	5.7194	5.9394	6.1593	6.3793	20
30	6.5993	6.8193	7.0392	7.2592	7.4792	7.6992	7.9191	8.1391	8.3591	8.5791	30
40	8.7990	9.0190	9.2390	9.4590	9.6789	9.8989	10.9189	10.3389	10.5588	10.7788	40
50	10.9988	11.2188	11.4388	11.6587	11.8787	12.0987	12.3187	12.5386	12.7586	12.9786	50
60	13.1986	13.4185	13.6385	13.8585	14.0785	14.2984	14.5184	14.7384	14.9584	15.1783	60
70	15.3983	15.6183	15.8383	16.0582	16.2782	16.4982	16.7182	16.9382	17.1581	17.3781	70
80	17.5981	17.8181	18.0380	18.2580	18.4780	18.6980	18.9179	19.1379	19.3579	19.5779	80
90	19.7978	20.0178	20.2378	20.4578	20.6777	20.8977	21.1177	21.3377	21.5576	21.7776	90
100	21.9976	22.2176	22.4376	22.6575	22.8775	23.0975	23.3175	23.5374	23.7574	23.9774	100

POUNDS TO KILOGRAMS

lb	0	1	2	3	4	5	6	7	8	9	lb
	kg	kg	kg	kg	kg	kg	kg	kg	kg	kg	
--		0.454	0.907	1.361	1.814	2.268	2.722	3.175	3.629	4.082	--
10	4.536	4.990	5.443	5.897	6.350	6.804	7.257	7.711	8.165	8.618	10
20	9.072	9.525	9.979	10.433	10.886	11.340	11.793	12.247	12.701	13.154	20
30	13.608	14.061	14.515	14.969	15.422	15.876	16.329	16.783	17.237	17.690	30
40	18.144	18.597	19.051	19.504	19.958	20.412	20.865	21.319	21.772	22.226	40
50	22.680	23.133	23.587	24.040	24.494	24.948	25.401	25.855	26.308	26.762	50
60	27.216	27.669	28.123	28.576	29.030	29.484	29.937	30.391	30.844	31.298	60
70	31.751	32.205	32.659	33.112	33.566	34.019	34.473	34.927	35.380	35.834	70
80	36.287	36.741	37.195	37.648	38.102	38.555	39.009	39.463	39.916	40.370	80
90	40.823	41.277	41.730	42.184	42.638	43.092	43.545	43.998	44.453	44.906	90
100	45.359	45.813	46.266	46.720	47.174	47.627	48.081	48.534	48.988	49.442	100

KILOGRAMS TO POUNDS

kg	0	1	2	3	4	5	6	7	8	9	kg
	lb	lb	lb	lb	lb	lb	lb	lb	lb	lb	
--		2.205	4.409	6.614	8.818	11.023	13.228	15.432	17.637	19.842	--
10	22.046	24.251	26.455	28.660	30.865	33.069	35.274	37.479	39.683	41.888	10
20	44.092	46.297	48.502	50.706	52.911	55.116	57.320	59.525	61.729	63.934	20
30	66.139	68.343	70.548	72.752	74.957	77.162	79.366	81.571	83.776	85.980	30
40	88.185	90.389	92.594	94.799	97.003	99.208	101.41	103.62	105.82	108.03	40
50	110.23	112.44	114.64	116.84	119.05	121.25	123.46	125.66	127.87	130.07	50
60	132.28	134.48	136.69	138.89	141.10	143.30	145.51	147.71	149.91	152.12	60
70	154.32	156.53	158.73	160.94	163.14	165.35	167.55	169.76	171.96	174.17	70
80	176.37	178.57	180.78	182.98	185.19	187.39	189.60	191.80	194.01	196.21	80
90	198.42	200.62	202.83	205.03	207.23	209.44	211.64	213.85	216.05	218.26	90
100	220.46	222.67	224.87	227.08	229.28	231.49	233.69	235.89	238.10	240.30	100

POUNDS PER SQUARE INCHES TO KILOPASCALS

lb/in ²	0	1	2	3	4	5	6	7	8	9	lb/in ²
	kPa	kPa	kPa	kPa	kPa	kPa	kPa	kPa	kPa	kPa	
--		0.0703	0.1406	0.2100	0.2812	0.3515	0.4218	0.4921	0.5625	0.6328	--
10	0.7031	0.7734	0.8437	0.9140	0.9843	1.0546	1.1249	1.1952	1.2655	1.3358	10
20	1.4062	1.4765	1.5468	1.6171	1.6874	1.7577	1.8280	1.8983	1.9686	2.0389	20
30	2.1092	2.1795	2.2498	2.3202	2.3905	2.4608	2.5311	2.6014	2.6717	2.7420	30
40	2.8123	2.8826	2.9529	3.0232	3.0935	3.1639	3.2342	3.3045	3.3748	3.4451	40
50	3.5154	3.5857	3.6560	3.7263	3.7966	3.8669	3.9372	4.0072	4.0779	4.1482	50
60	4.2185	4.2888	4.3591	4.4294	4.4997	4.5700	4.6403	4.7106	4.7809	4.8512	60
70	4.9216	4.9919	5.0622	5.1325	5.2028	5.2731	5.3434	5.4137	5.4840	5.5543	70
80	5.6246	5.6949	5.7652	5.8356	5.9059	5.9762	6.0465	6.1168	6.1871	6.2574	80
90	6.3277	6.3980	6.4683	6.5386	6.6089	6.6793	6.7496	6.8199	6.8902	6.9605	90
100	7.0308	7.1011	7.1714	7.2417	7.3120	7.3823	7.4526	7.5229	7.5933	7.6636	100

KILOPASCALS TO POUNDS PER SQUARE INCHES

kPa	0	1	2	3	4	5	6	7	8	9	kPa
	lb/in ²	lb/in ²	lb/in ²	lb/in ²	lb/in ²	lb/in ²	lb/in ²	lb/in ²	lb/in ²	lb/in ²	
--		14.22	28.45	42.67	56.89	71.12	85.34	99.56	113.78	128.01	--
10	142.23	156.45	170.68	184.90	199.12	213.35	227.57	241.79	256.02	270.24	10
20	284.46	298.69	312.91	327.13	341.36	355.58	369.80	384.03	398.25	412.47	20
30	426.70	440.92	455.14	469.36	483.59	497.81	512.03	526.26	540.48	554.70	30
40	568.93	583.15	597.37	611.60	625.82	640.04	654.27	668.49	682.71	696.94	40
50	711.16	725.38	739.61	753.83	768.05	782.28	796.50	810.72	824.94	839.17	50
60	853.39	867.61	881.84	896.06	910.28	924.51	938.73	952.95	967.18	981.40	60
70	995.62	1009.8	1024.1	1038.3	1052.5	1066.7	1081.0	1095.2	1109.4	1123.6	70
80	1137.8	1152.1	1166.3	1180.5	1194.7	1209.0	1223.2	1237.4	1251.6	1265.9	80
90	1280.1	1294.3	1308.5	1322.7	1337.0	1351.2	1365.4	1379.6	1393.9	1408.1	90
100	1422.3	1436.5	1450.8	1465.0	1479.2	1493.4	1507.7	1521.9	1536.1	1550.3	100

FOOT POUNDS TO NEWTON-METRES

ft-lb	0	1	2	3	4	5	6	7	8	9	ft-lb
	N·m	N·m	N·m	N·m	N·m	N·m	N·m	N·m	N·m	N·m	
--		0.138	0.276	0.415	0.553	0.691	0.829	0.967	1.106	1.244	--
10	1.382	1.520	1.658	1.796	1.934	2.073	2.211	2.349	2.487	2.625	10
20	2.764	2.902	3.040	3.178	3.316	3.455	3.593	3.731	3.869	4.007	20
30	4.146	4.284	4.422	4.560	4.698	4.837	4.975	5.113	5.251	5.389	30
40	5.528	5.666	5.804	5.942	6.080	6.219	6.357	6.495	6.633	6.771	40
50	6.910	7.048	7.186	7.324	7.462	7.601	7.739	7.877	8.015	8.153	50
60	8.292	8.430	8.568	8.706	8.844	8.983	9.121	9.259	9.397	9.535	60
70	9.674	9.812	9.950	10.088	10.227	10.365	10.503	10.641	10.779	10.918	70
80	11.056	11.194	11.332	11.470	11.609	11.747	11.885	12.023	12.161	12.300	80
90	12.438	12.576	12.714	12.855	12.991	13.129	13.267	13.405	13.544	13.682	90
100	13.820	13.958	14.096	14.235	14.373	14.511	14.649	14.787	14.925	14.064	100

NEWTON-METRES TO FOOT POUNDS

N·m	0	1	2	3	4	5	6	7	8	9	N·m
	ft-lb	ft-lb	ft-lb	ft-lb	ft-lb	ft-lb	ft-lb	ft-lb	ft-lb	ft-lb	
--		7.23	14.47	21.70	28.93	36.17	43.40	50.63	57.87	65.10	--
10	72.33	79.57	86.80	94.03	101.27	108.50	115.74	122.97	130.20	137.43	10
20	144.67	151.90	159.13	166.37	173.60	180.84	188.08	195.30	202.54	209.77	20
30	217.00	224.23	231.46	238.70	245.93	253.17	260.41	267.63	274.87	282.10	30
40	289.34	296.57	303.79	311.04	318.27	325.50	332.75	339.98	347.21	354.44	40
50	361.66	368.89	376.12	383.36	390.59	397.82	405.07	412.30	419.53	426.76	50
60	434.00	441.23	448.45	455.70	462.93	470.17	477.41	484.64	491.87	499.10	60
70	506.34	513.57	520.80	528.04	535.27	542.50	549.75	556.98	564.21	571.44	70
80	578.68	585.91	593.14	600.38	607.61	614.85	622.09	629.41	636.55	643.78	80
90	651.00	658.23	665.46	672.70	679.93	687.17	694.41	701.63	708.87	716.10	90
100	723.34	730.57	737.80	745.04	752.27	759.51	766.75	774.07	781.21	788.44	100

METRIC-ENGLISH CONVERSION TABLE

Multiply	by	to get equivalent number of:	Multiply	by	to get equivalent number of:
	LENGTH			ACCELERATION	
Inch	25.4	millimetres (mm)	Foot/sec ²	0.304 8	metre/sec ² (m/s ²)
Foot	0.304 8	metres (m)	Inch/sec ²	0.025 4	metre/sec ²
Yard	0.914 4	metres		TORQUE	
Mile	1.609	kilometres (km)	Pound-inch	0.112 98	new ton-metres (N-m)
	AREA		Pound-foot	1.355 8	new ton-metres
Inch ²	645.2	millimetres ² (mm ²)		POWER	
Foot ²	6.45	centimetres ² (cm ²)	Horsepower	0.746	kilowatts (kW)
Yard ²	0.092 9	metres ² (m ²)		PRESSURE OR STRESS	
	VOLUME		Inches of water	0.249 1	kilopascals (kPa)
Inch ³	16 387.	mm ³	Pounds/sq. in.	6.895	kilopascals
Quart	0.016 4	cm ³		ENERGY OR WORK	
Gallon	0.946 4	litres (l)	BTU	1 055.	joules (J)
Yard ³	3.785 4	litres	Foot-pound	1.355 8	joules
	0.764 6	metres ³ (m ³)	Kilowatt-hour	3 600 000.	joules (J = one W's)
	MASS			or 3.6x10 ⁶	
Pound	0.453 6	kilograms (kg)		LIGHT	
Ton	907.18	kilograms (kg)		1.076 4	lumens/metre ² (lm/m ²)
Ton	0.907	tonne (t)		FUEL PERFORMANCE	
	FORCE		Miles/gal	0.425 1	kilometres/litre (km/l)
Kilogram	9.807	newtons (N)	Gal/mile	2.352 7	litres/kilometre (l/km)
Ounce	0.278 0	newtons		VELOCITY	
Pound	4.448	newtons	Miles/hour	1.609 3	kilometres/hr. (km/h)
	TEMPERATURE				
Degree Fahrenheit	(°F-32) ÷ 1.8	degree Celsius (C)			

