

## INSTRUMENT PANEL

**WARNING: IF EQUIPPED WITH AIR CUSHION RESTRAINT SYSTEM DO NOT ATTEMPT ANY ADJUSTMENT, REPAIR OR REMOVAL OF ANY PORTION OF THE INSTRUMENT PANEL OR COMPONENTS WHICH WOULD REQUIRE REMOVAL OR DISCONNECTING OF ANY COMPONENT OF THE AIR CUSHION RESTRAINT SYSTEM UNTIL THE DISCONNECTION PROCEDURE IS COMPLETED. THIS PROCEDURE MUST BE FOLLOWED TO PREVENT ACCIDENTAL DEPLOYMENT OF THE SYSTEM WHICH COULD RESULT IN PERSONAL INJURY AND/OR DAMAGE TO THE SYSTEM'S COMPONENTS.**

### A.C.R.S. DISCONNECTION PROCEDURE

1. Turn ignition switch to "LOCK" position. Disconnect the negative battery cable from the battery and tape end.

## CONTENTS

Subject	Page No.
<b>DESCRIPTION AND OPERATION:</b>	
<b>DIAGNOSIS:</b>	
<b>MAINTENANCE AND ADJUSTMENTS:</b>	
<b>MAJOR REPAIR:</b>	
<b>"A" Series Instrument Panel Replacement .....</b>	<b>1G-119</b>
<b>"B-C-E" Series Instrument Panel Replacement .....</b>	<b>1G-120</b>
<b>"X" Series Instrument Panel Diagrams .....</b>	<b>1G-121</b>
<b>"A" Series Instrument Panel Diagrams .....</b>	<b>1G-126</b>
<b>"B-C-E" Series Instrument Panel Diagrams .....</b>	<b>1G-139</b>
<b>SPECIFICATIONS:</b>	

### MAJOR REPAIR

#### "X" SERIES INSTRUMENT PANEL COVER REPLACEMENT

Before proceeding disconnect the battery negative cable and tape end.

1. Remove glove box.
2. On A/C equipped cars, remove upper A/C extension and lower A/C outlet at center of IP. Remove upper center outlet nozzle, adapter and flex hose to right side outlet.
3. Remove four (4) IP pad nuts above glove box and ash tray, remove right side pad screw near pillar post.
4. Remove five (5) upper carrier screws and left side carrier screw near left pillar post.

5. Remove steering column cover, disconnect shift quadrant indicator cable at shift bowl (if automatic transmission).

6. Remove two (2) steering column nuts at IP, remove four (4) lower carrier screws.

7. Remove radio knobs, bezels and nuts, remove two (2) lower heater or A/C control screws.

8. Remove toe plate cover and five (5) toe plate to cowl screws, lower steering column.

9. Disconnect speedo cable, protect column with shop towel or tape, tilt carrier assembly rearward and rest on column.

10. Remove upper left hand IP pad screw and nut, remove IP pad from car. Transfer clips and nameplate to replacement pad.

11. To replace, reverse removal procedure.

**"A" SERIES INSTRUMENT PANEL REPLACEMENT**

Before proceeding disconnect the battery negative cable and tape.

**Glove Box and Door Removal**

1. Open glove box door, remove six screws and lift out glove box door.
2. Remove the two remaining screws and lift out the glove box.

**Right Trim Plate Removal**

1. After the glove box door and box have been removed, remove the two lower attaching screws and lift out the trim plate.

**Instrument Panel Cover Removal**

1. With preceding steps completed, remove the four instrument panel housing to cover screws.
2. Disconnect front speaker connector from radio.
3. Pull on cover assembly to disengage retaining clips and on the right side, the cover must be pulled downward while pulling rearward. (This is due to accessible clip at top of glove box).
4. The cover assembly can now be lifted out.

**Instrument Panel Housing Removal**

1. With preceding steps completed and using care, pry trim plate (as equipped) loose from instrument panel housing.
2. Disconnect heater-air conditioning cables and connections from control head.
3. Disconnect speedometer cable from speedometer.
4. Disconnect necessary wiring connectors.
5. Remove radio knobs and two retaining nuts.
6. Remove eight housing retaining screws.
7. Remove instrument panel housing assembly. Radio will pivot downward roughly one inch.

If the instrument panel housing is to be replaced with another housing, procure new instrument panel housing assembly and transfer the various switches, gauges and instruments.

**Instrument Panel Housing Installation**

1. Lift instrument panel housing and radio into position then install the eight retaining screws.
2. Connect speedometer cable, wiring and switch connectors, heater and or air-conditioning control cables etc., shift quadrant and tighten radio to support nut.
3. Install radio retaining nuts.
4. Install cluster trim plate, radio bezels and knobs.

**Install Instrument Panel Cover**

1. Lift instrument panel cover into place, attach speaker wire connector to radio and secure the instrument panel cover.

**Right Trim Plate Installation**

1. Position upper edge of trim plate under instrument panel cover and secure bottom with the two screws.

**Glove Box and Door Installation**

1. Locate glove box in position and install the two top screws.
2. Place glove box door in position, align holes in door hinge and glove box with speed nuts on frame and install the six attaching screws.
3. Connect ground cable to battery.

**"A" SERIES GLOVE BOX LOCK REPLACEMENT****Removal**

1. With the door open and the lock in locked position, depress the silver color tumbler from just inside the door, insert the key, turn counterclockwise and remove the lock cylinder.
2. Unscrew the excutcheon and remove the case assembly.

**Installation**

1. Align case assembly with slot in door and install excutcheon.
2. Insert lock cylinder with silver tumbler depressed and key installed into the case assembly and turn clockwise.
3. Remove key and operate lock to ensure its assembly.

**B-C-E SERIES INSTRUMENT PANEL  
REPLACEMENT**

**NOTE:** *Instrument panels equipped with A.C.R.S. refer to A.C.R.S. Manual.*

Before proceeding, disconnect the battery negative cable and tape end.

**Instrument Panel Cover Removal**

1. Remove instrument panel lower filler.
2. Remove front speaker connector from radio.
3. Remove glove box and door and panel end screw.
4. Remove six instrument panel cover retaining screws.
5. Pull cover assembly loose from retainers and on the right side, the cover must be pulled downward while pulling rearward (this is due to accessible clip at top of glove box).
6. The cover assembly can now be lifted out.

**Removing Instrument Panel Housing Assembly**

1. With the preceding steps completed, remove radio knobs, bezels and fader control if equipped then gently remove trim plate and radio retaining nuts.
2. Disconnect speedometer cable, shift quadrant, and necessary vacuum and electrical connectors.

3. Remove the six instrument panel housing retaining screws.

4. Carefully lift housing outward and allow radio to pivot downward slightly then remove housing first making sure it is free of all connections.

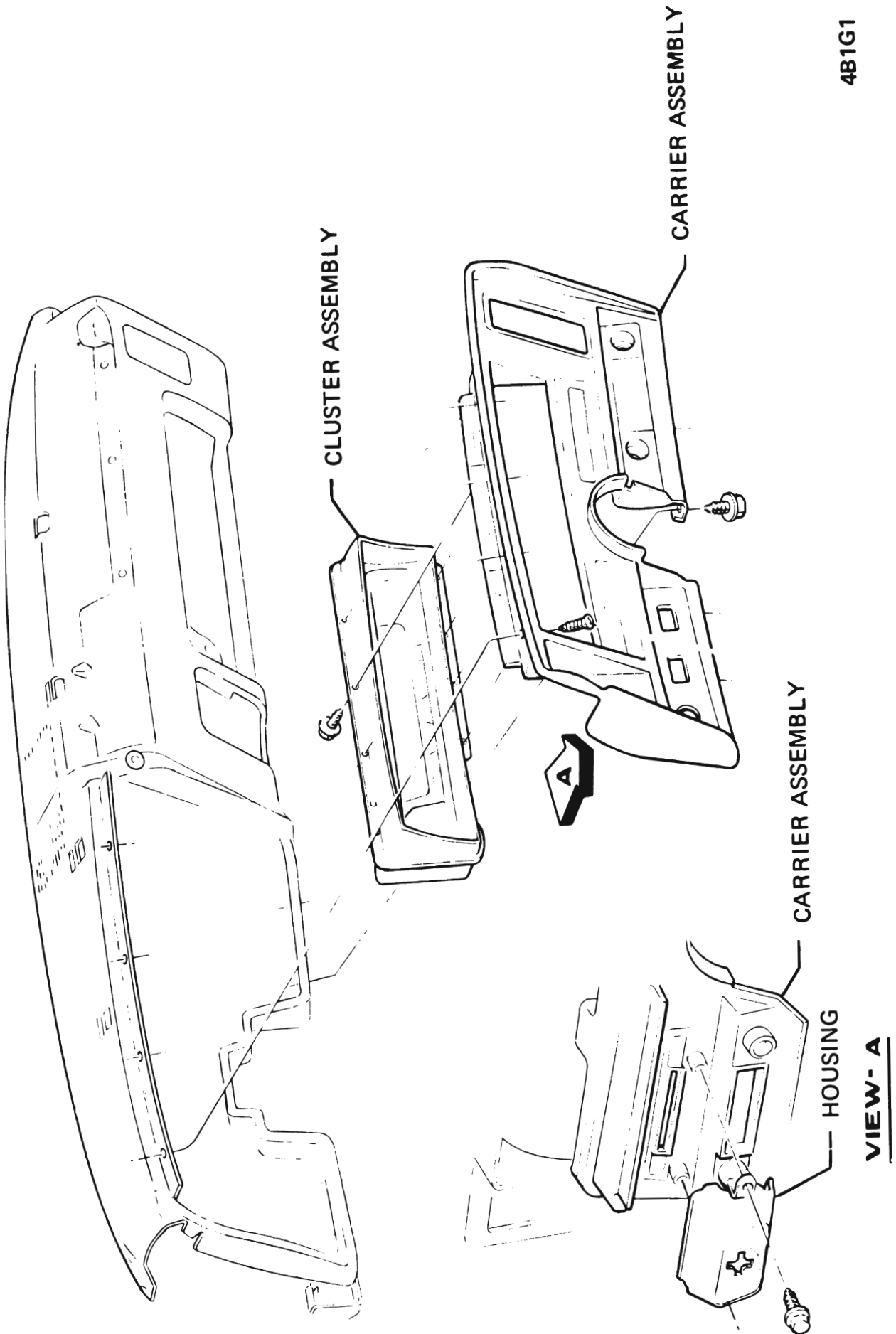
If the housing is to be replaced, procure a new housing and transfer all components.

**Instrument Panel Housing Installation**

1. Protect steering column with shop towels or equivalent and rest housing assembly near position on steering column.
2. Attach all connectors possible.
3. Lift housing into position while aligning radio and ducts then secure beginning with the two lower center screws.
4. Attach remaining connectors, speedometer cable shift quadrant cable and radio retaining nuts.
5. Install right trim plate, radio bezels, fader control if equipped and knobs.

**Instrument Panel Cover Installation**

1. Lift cover assembly into position, align ducts, secure retainer clips and install the screws.  
and speed nut.
2. Connect front speaker wire connector to radio.
3. Make certain the ducts and air tubes are connected and install glove box and door.



4B1G1

Figure 1G-1 "X" Series Instrument Cluster Removal

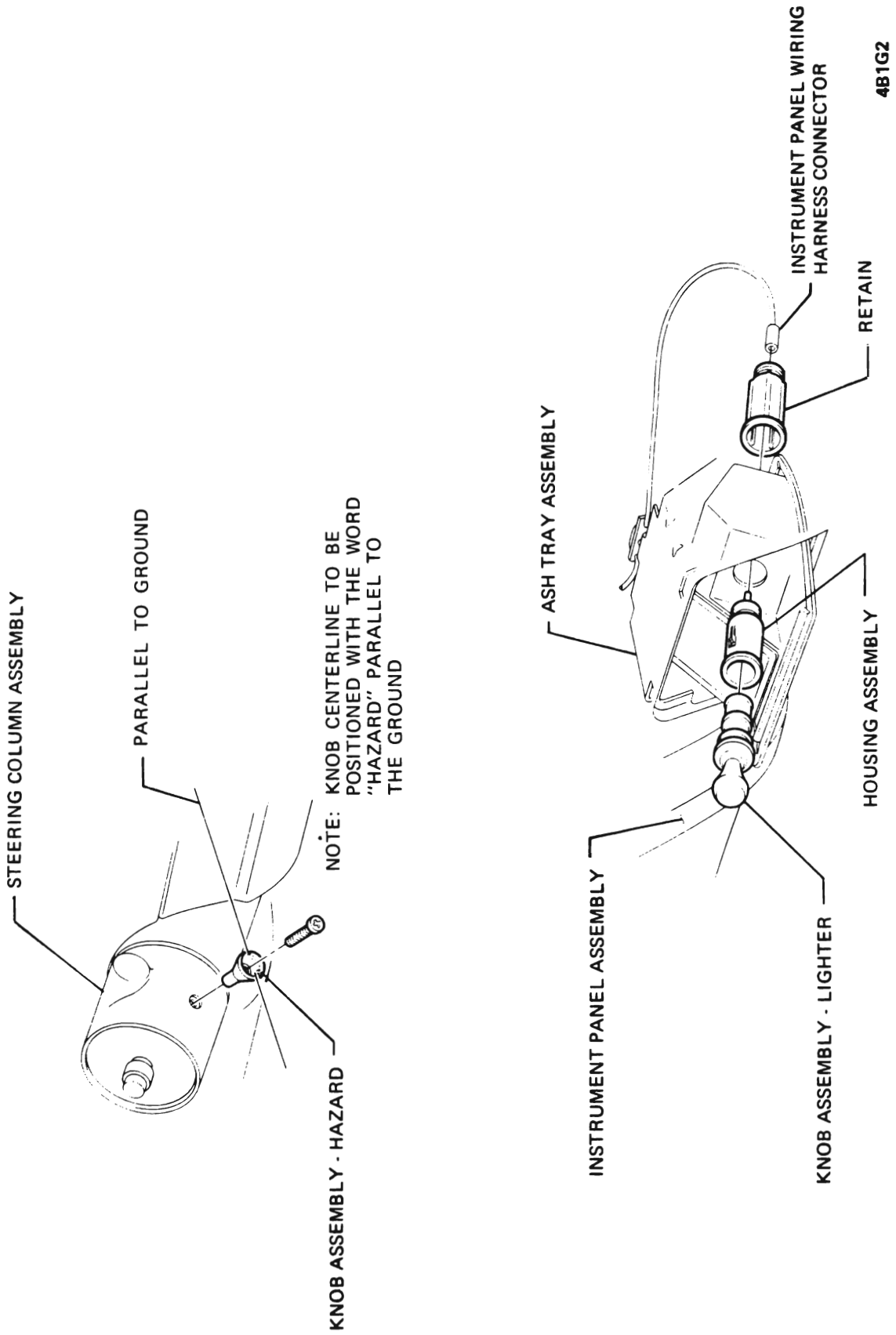


Figure 1G-2 "X" Series Hazzard Flasher Knob and Cigar Lighter Removal

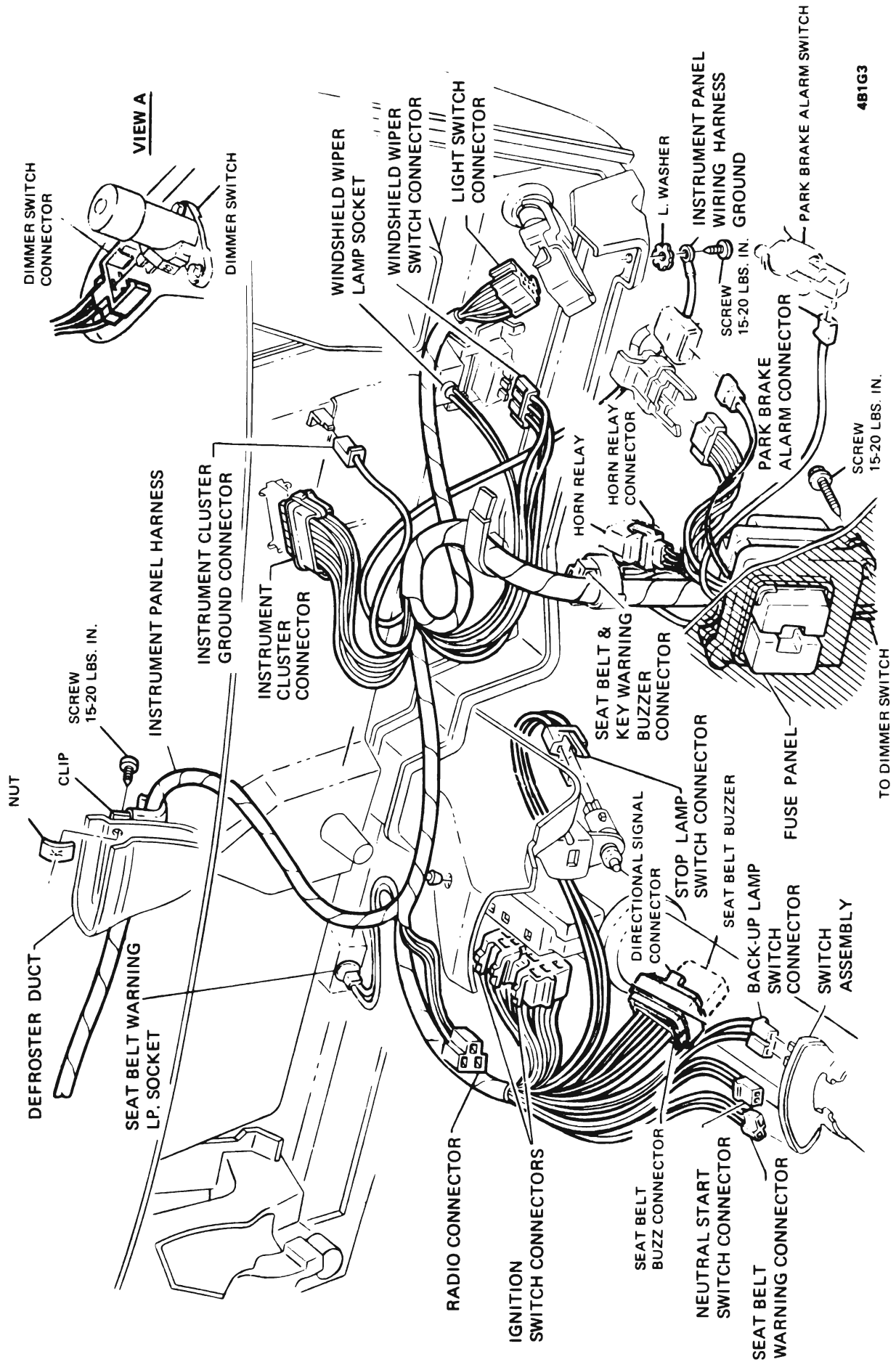
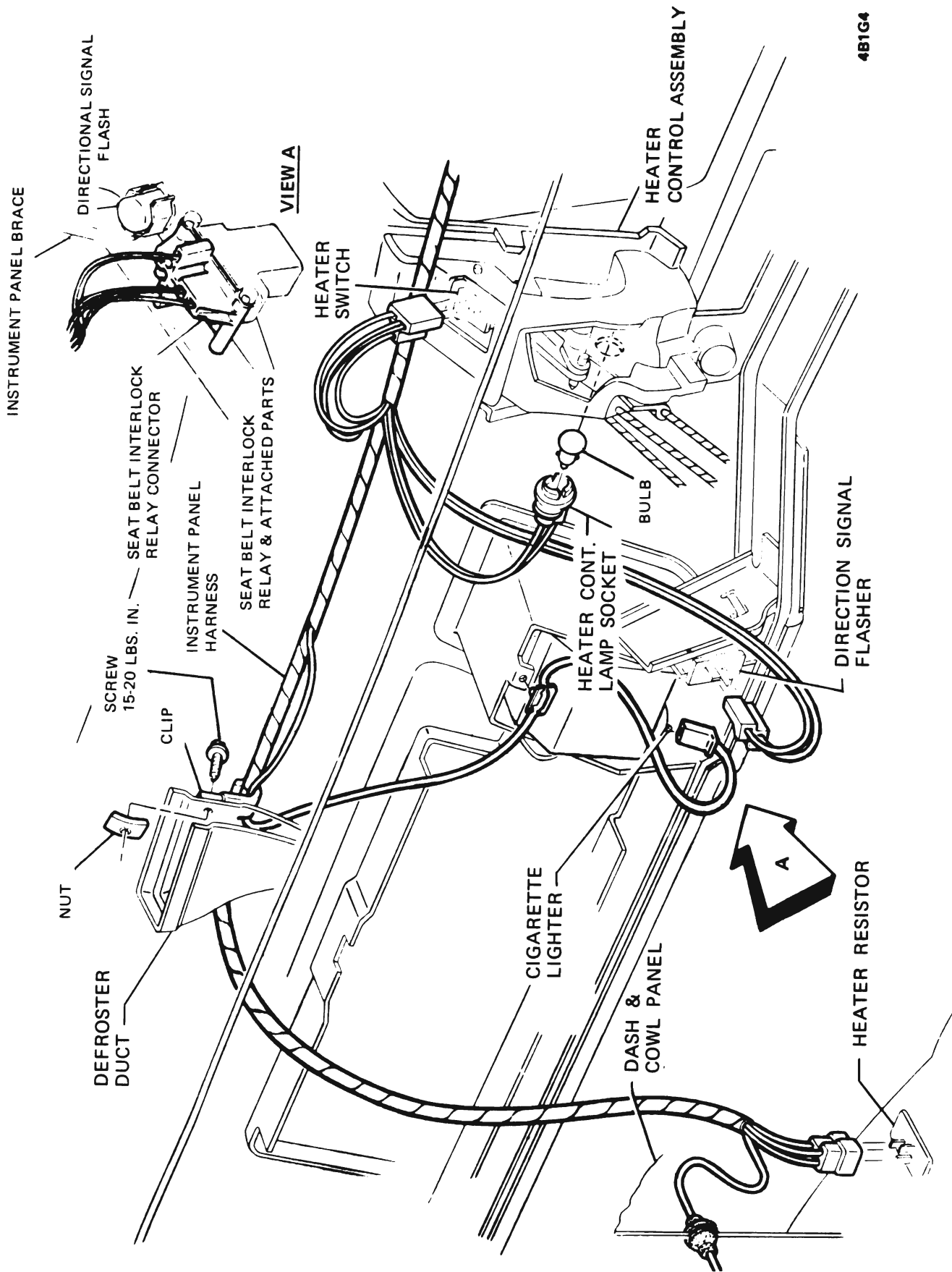
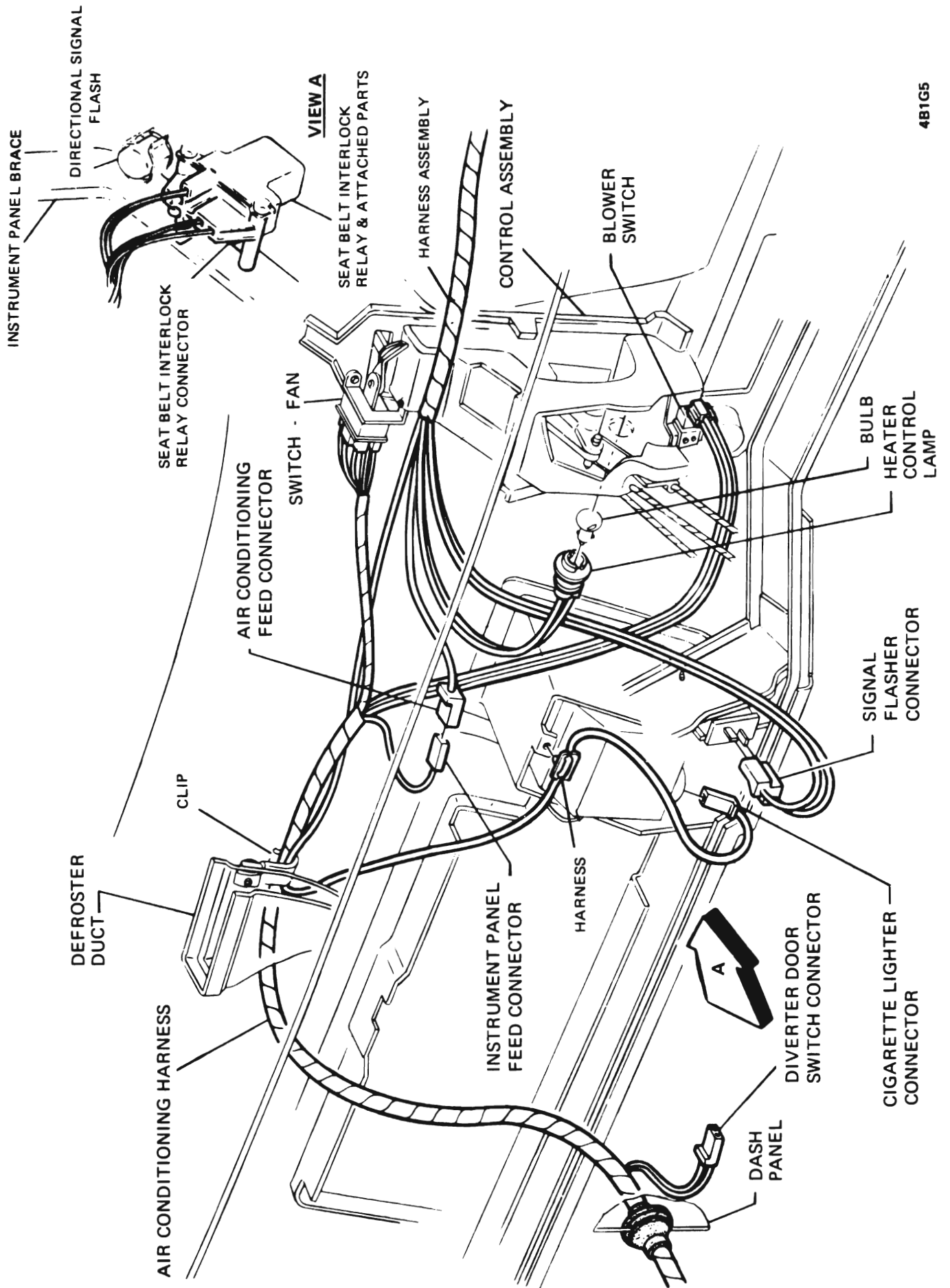


Figure 1G-3 "X" Series Instrument Panel Wiring



481G4

Figure 1G-4 "X" Series Instrument Panel Wiring - Heater



4B1G5

Figure 1G-5 "X" Series Instrument Panel Wiring - Air-Conditioning



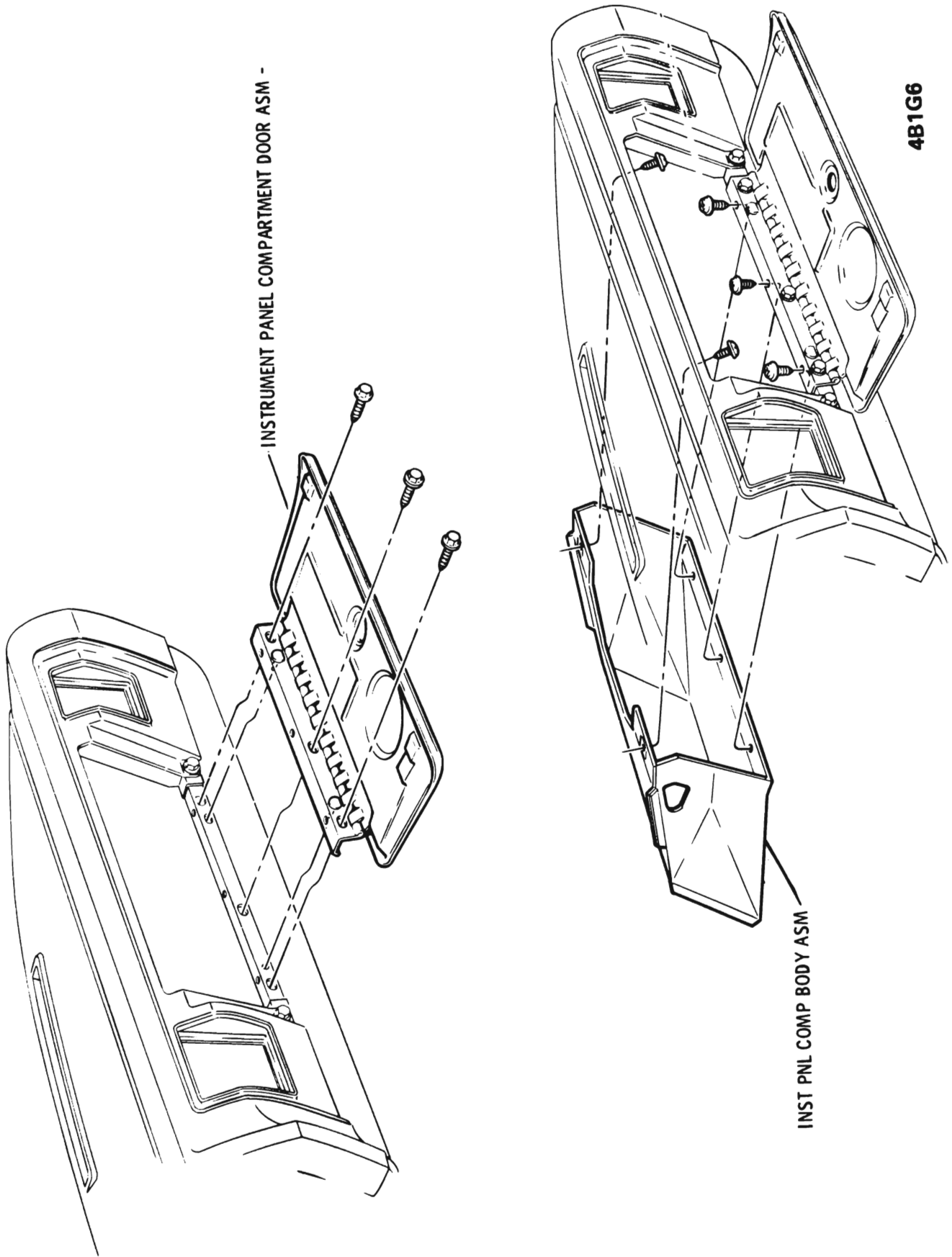


Figure 1G-6 "A" Removing Glove Box and Door

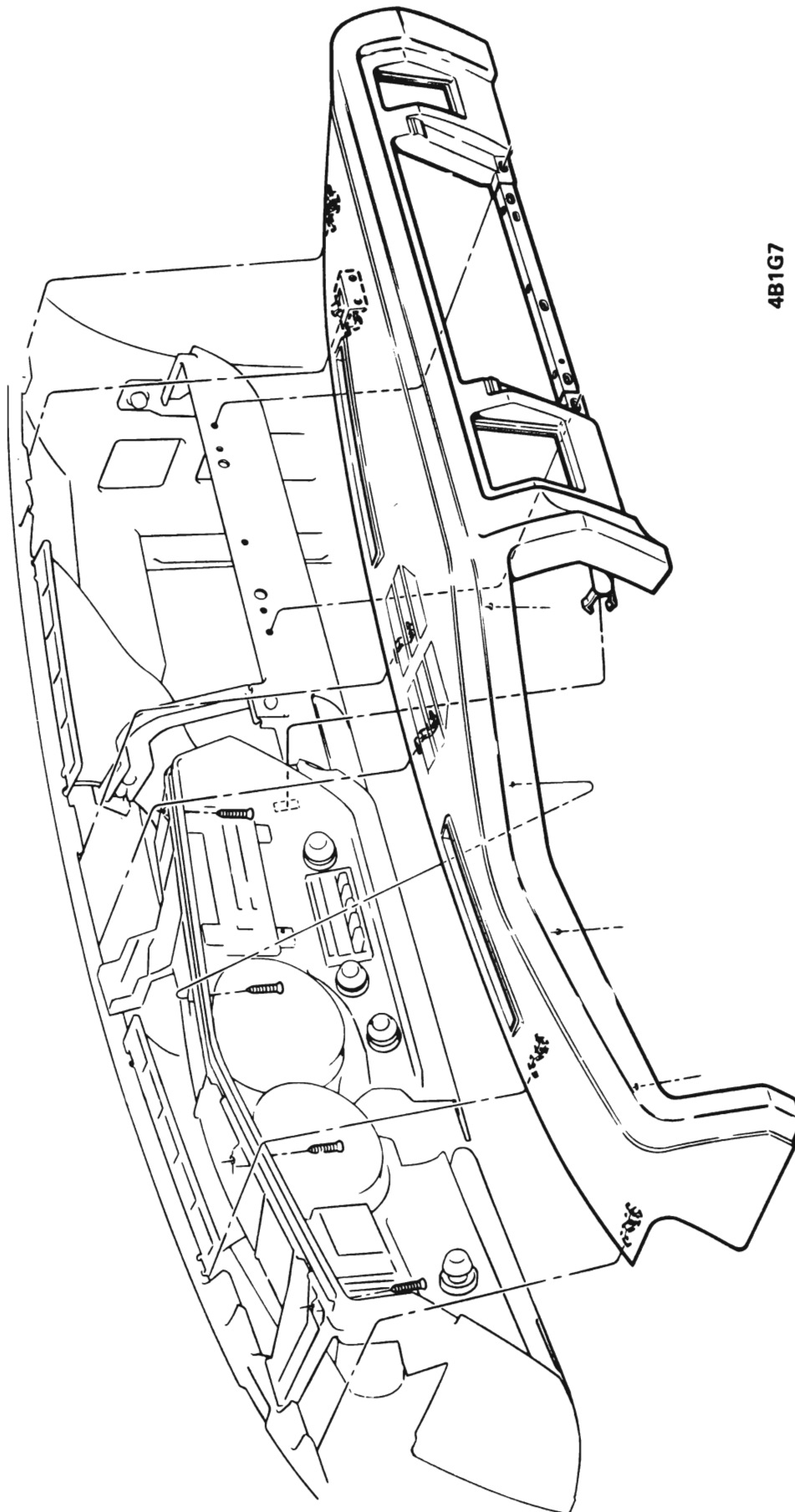
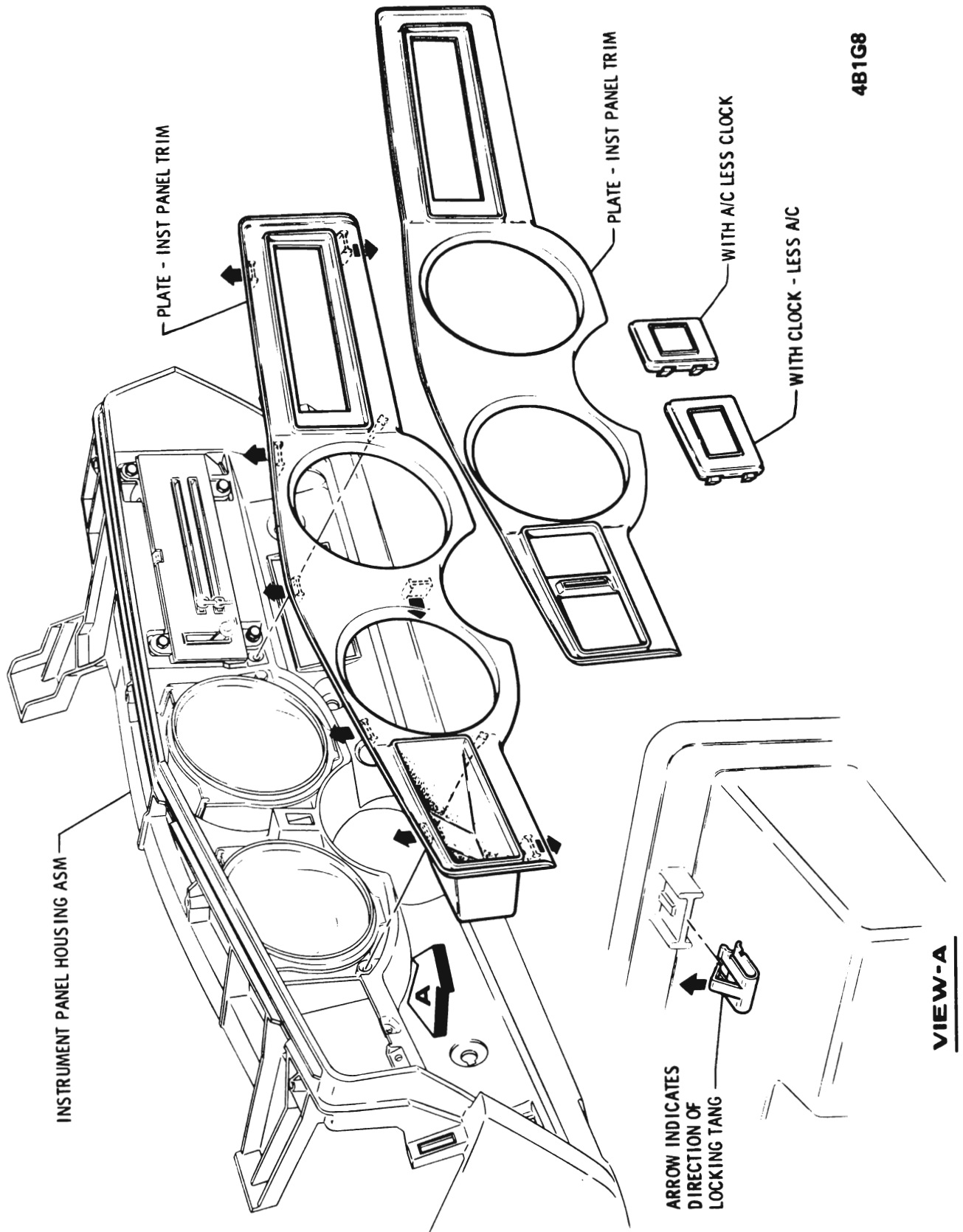
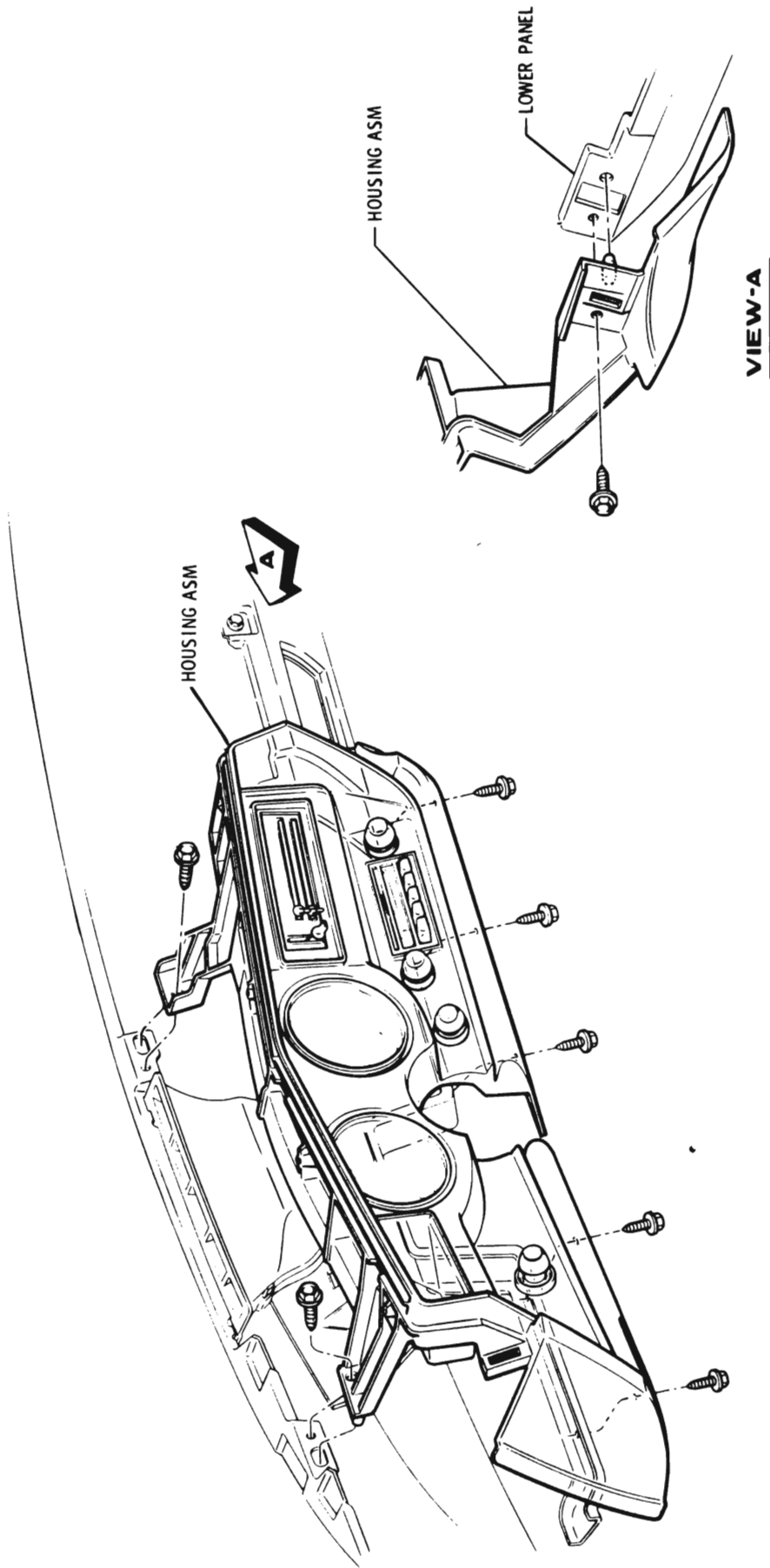


Figure 1G-7 "A" Series Removing Instrument Panel Cover



4B1G8

Figure 1G-8 "A" Series Trim Plate



4B1G9

Figure 1G-9 "A" Series Instrument Panel Housing

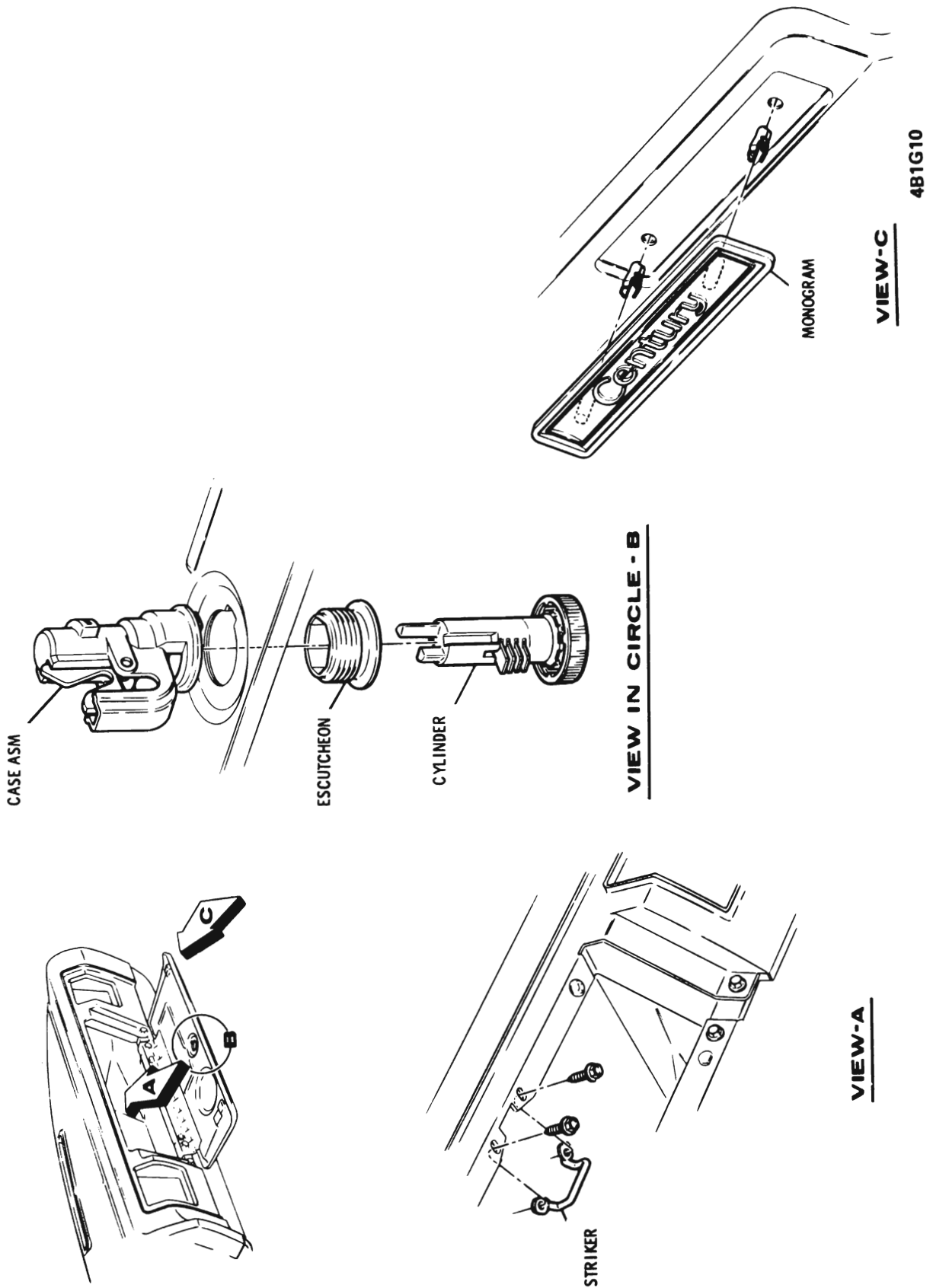


Figure 1G-10 "A" Series Glove Box Lock and Striker

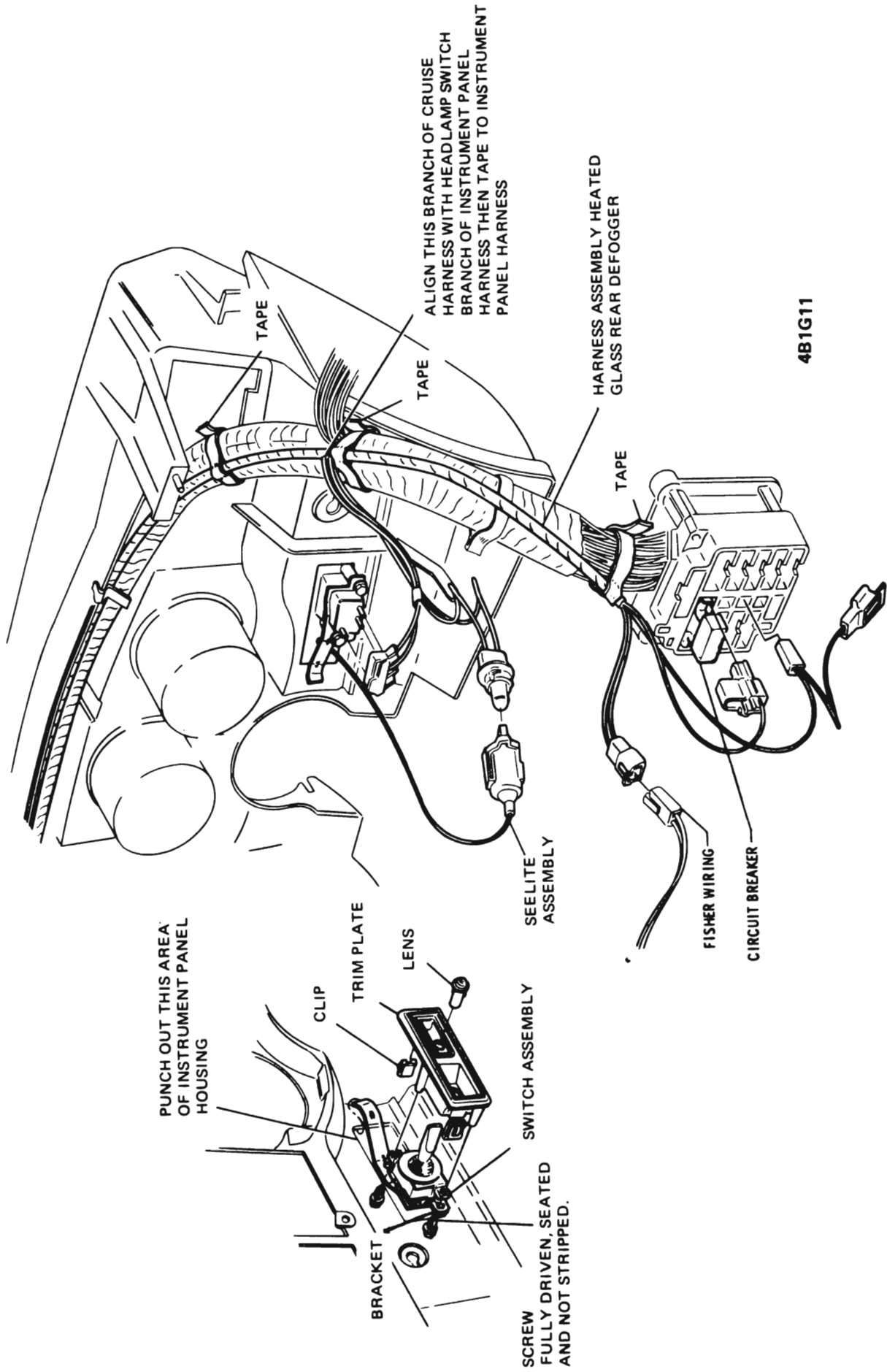


Figure 1G-11 'A' Series Wiring Rear Defogger

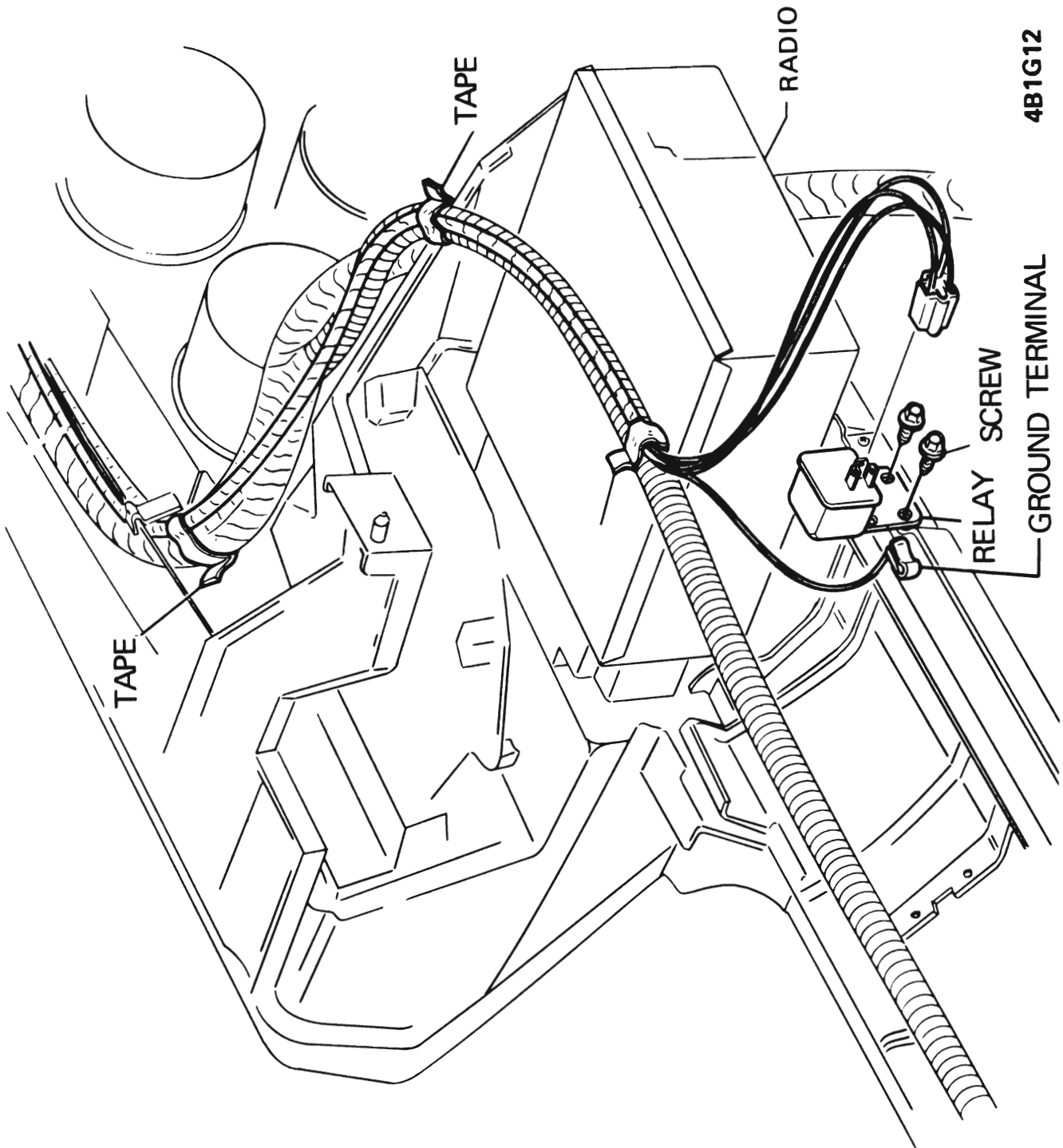


Figure 1G-12 "A" Series Wiring Heated Glass Rear Defogger

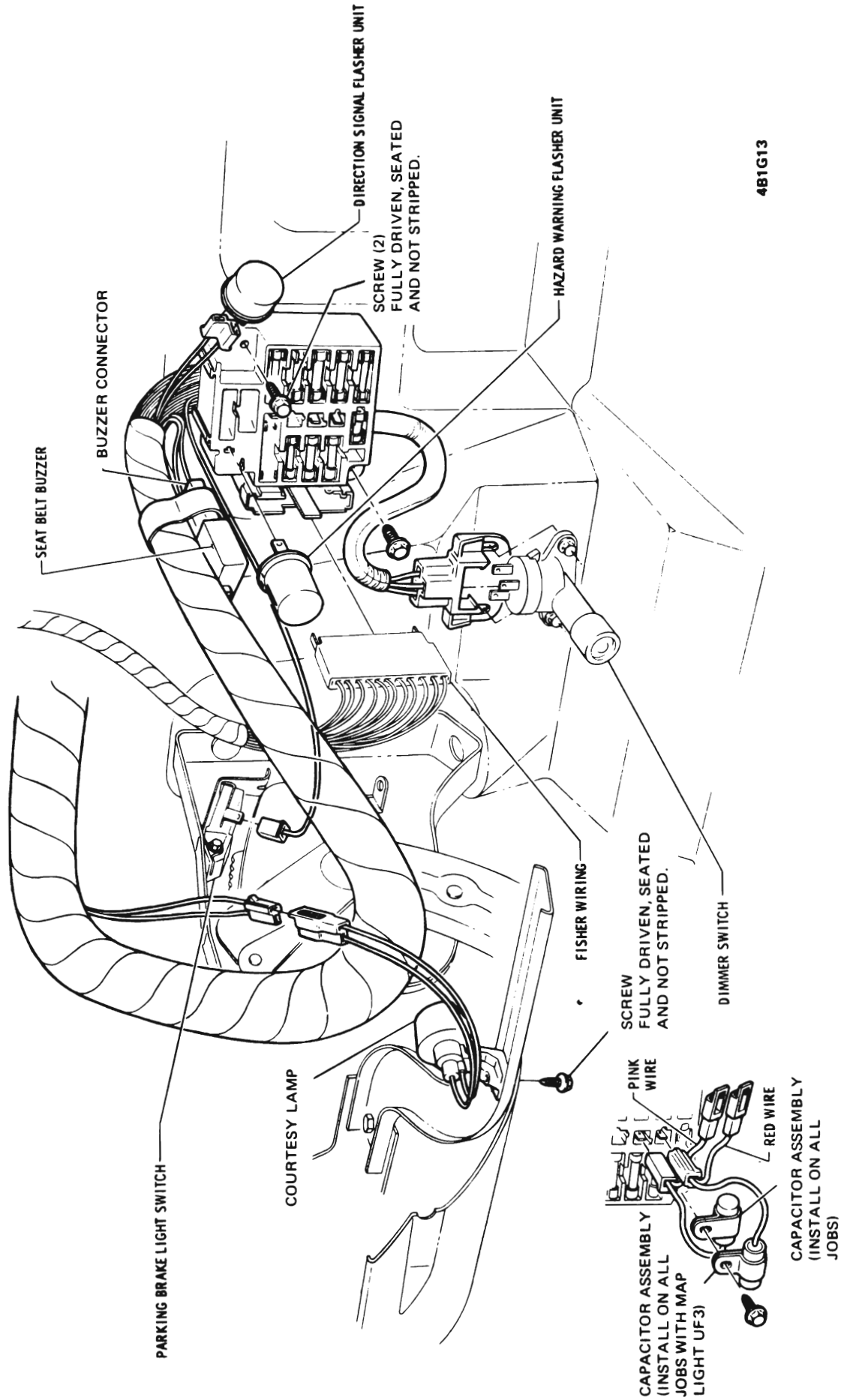
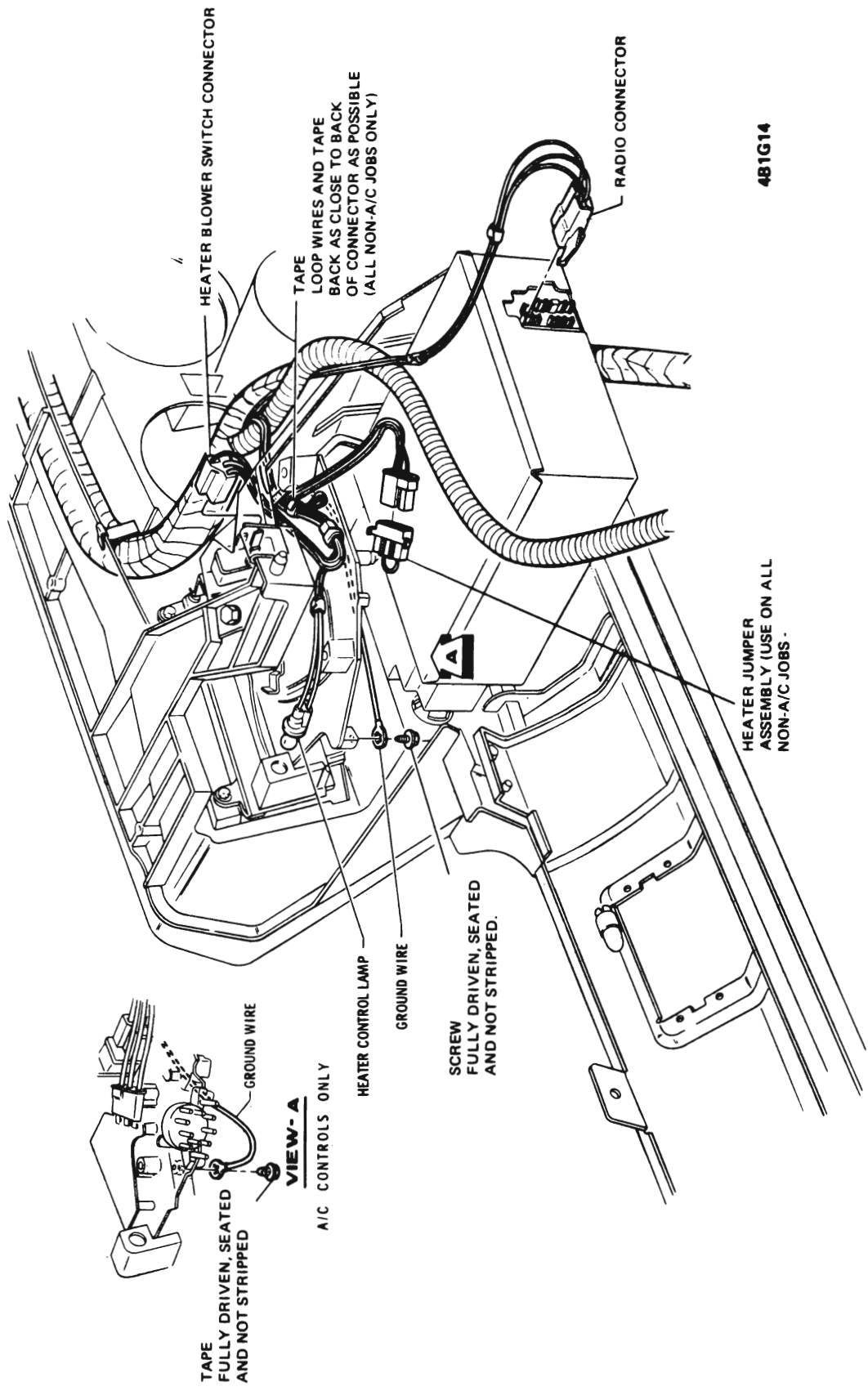


Figure 1G-13 "A" Series Wiring Fuse Block





481G14

Figure 1G-14 "A" Series Wiring Right Side Instrument Panel

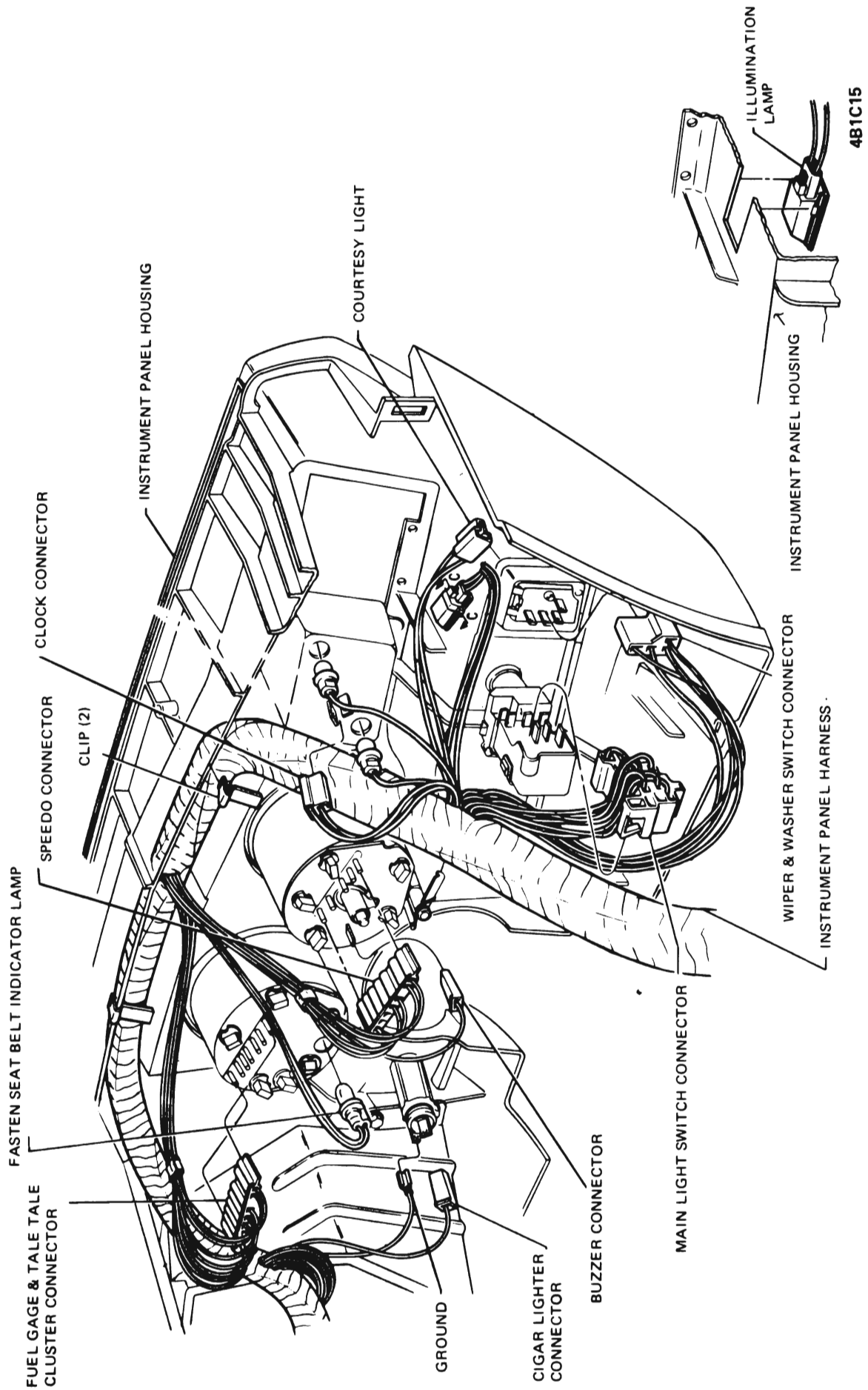
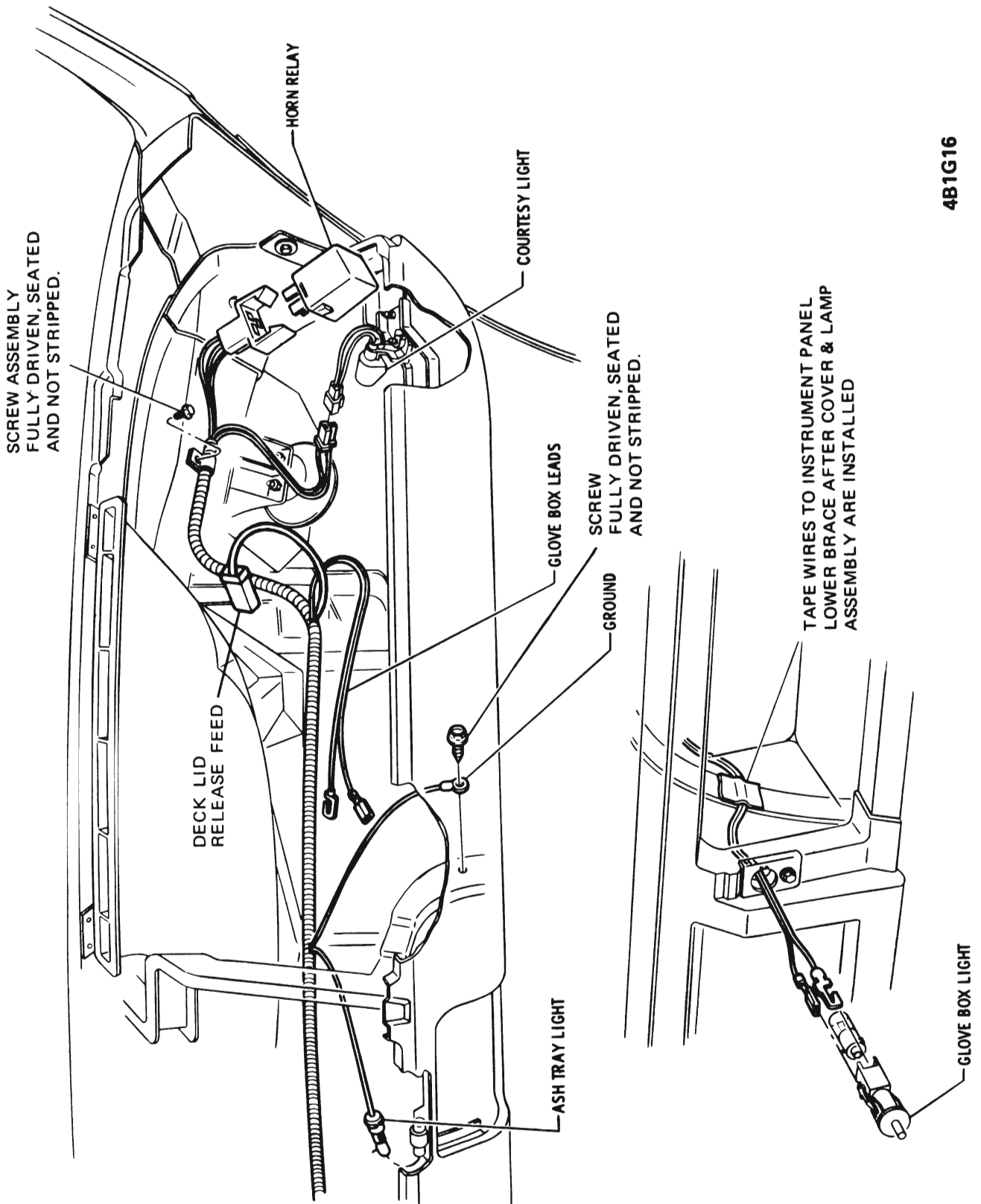


Figure 1G-15 "A" Series Wiring Left Side Instrument Panel



4B1G16

Figure 1G-16 "A" Series Horn Relay, Courtesy, Ash Tray and Glove Box Lights

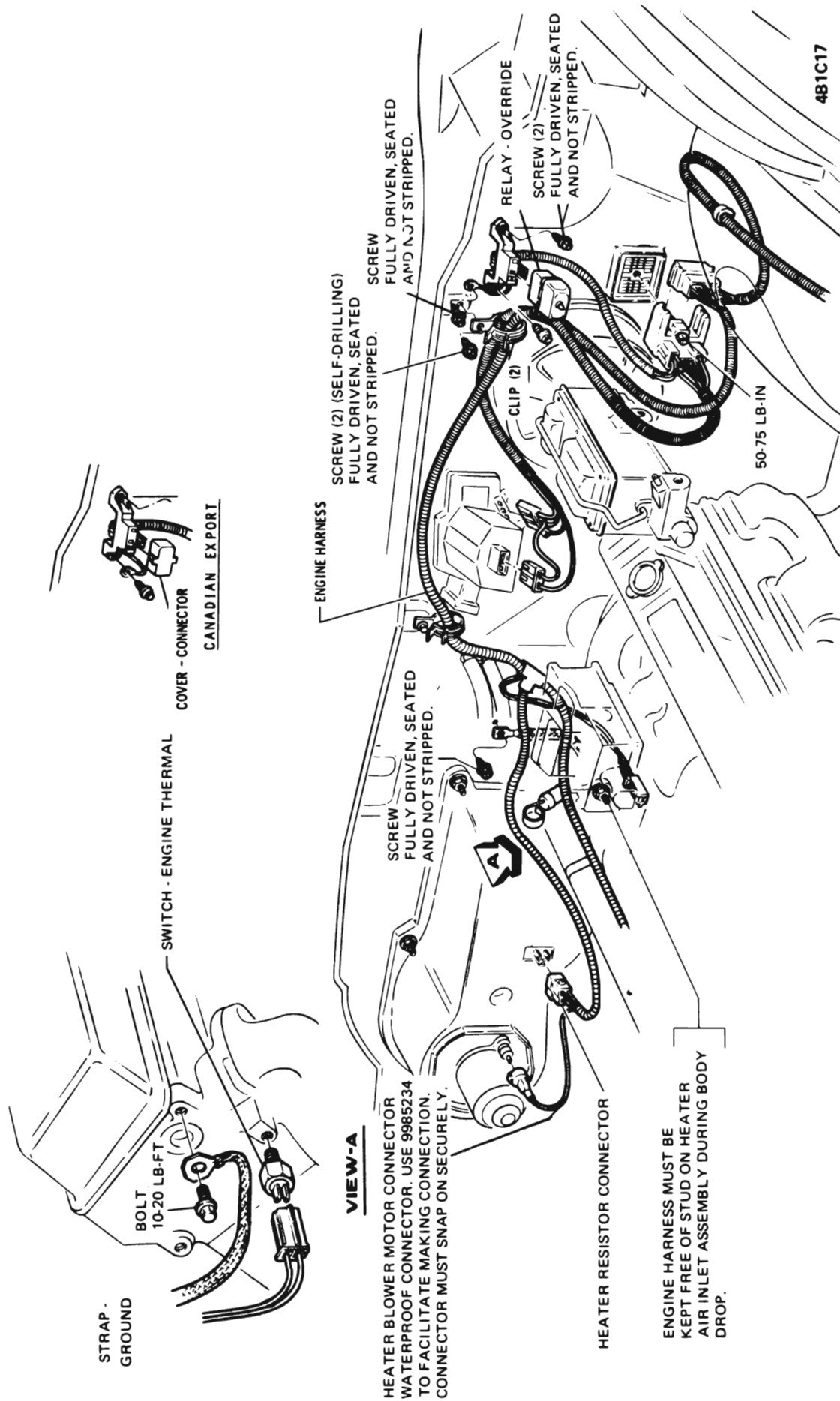


Figure 1G-17 "A" Series Engine Harness - Front of Dash

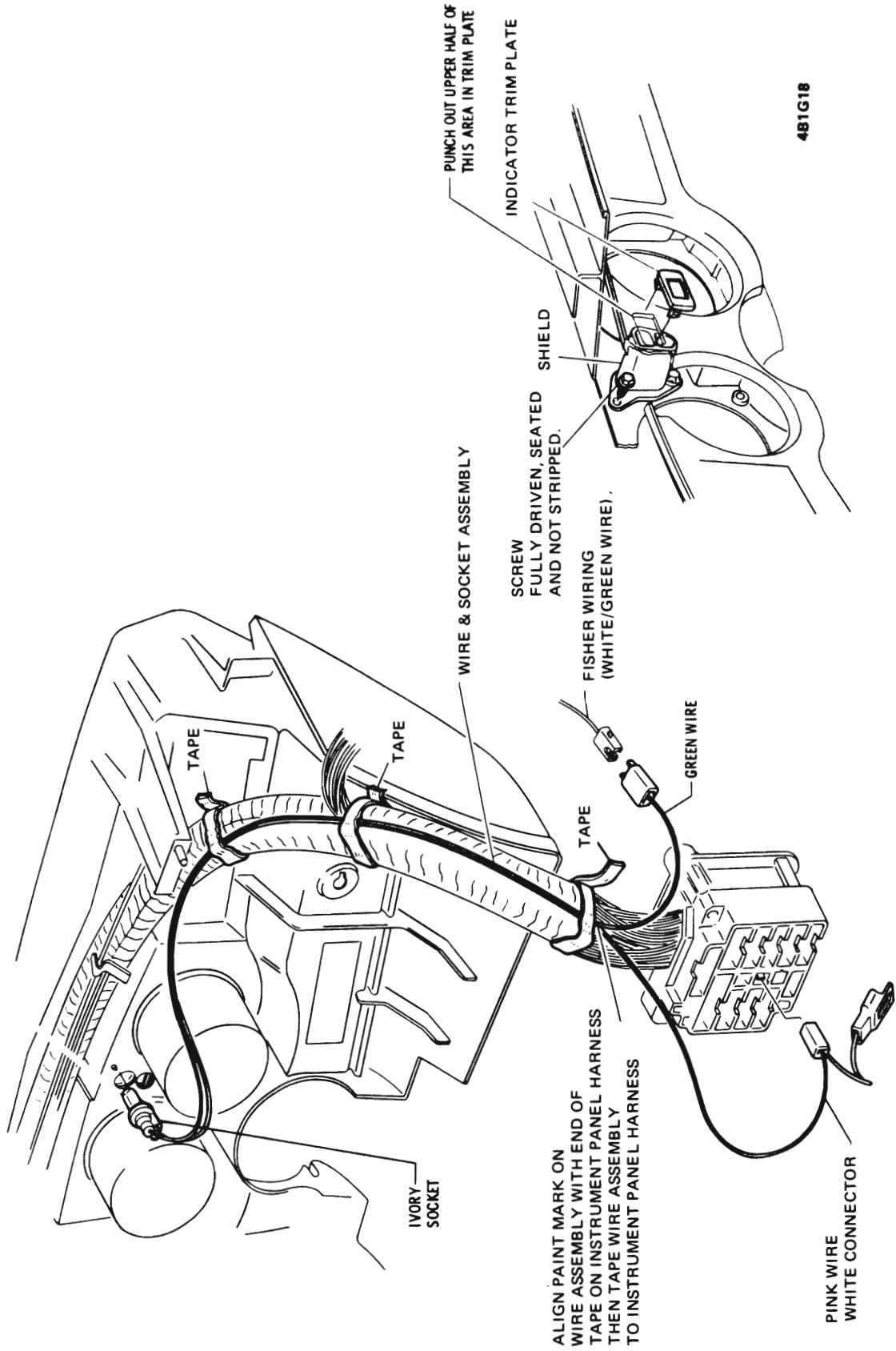


Figure 1G-18 "A" Series Wagon Tailgate Ajar Indicator

4B1G19

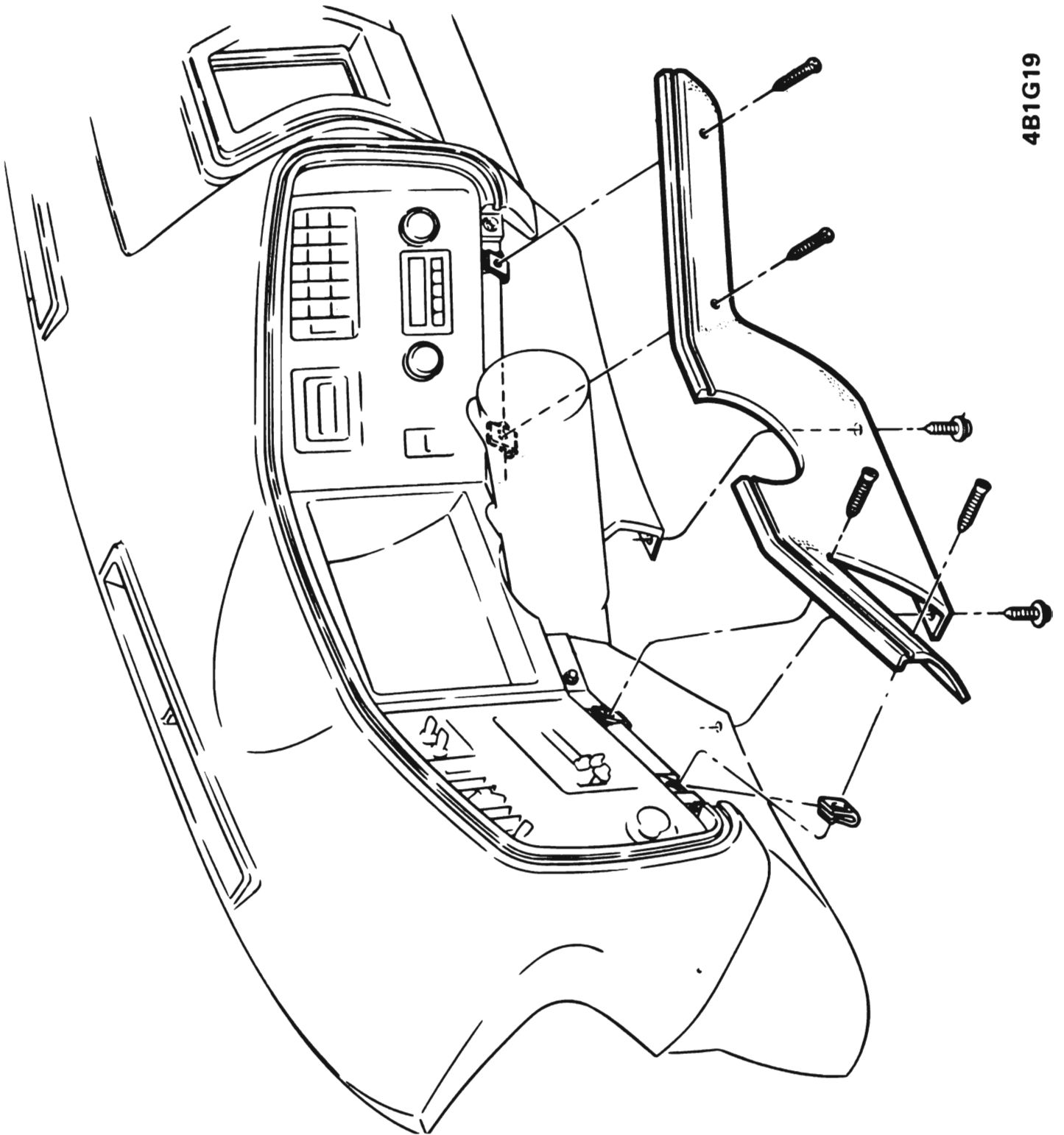


Figure 1G-19 "B-C-E" Series Lower Instrument Panel Filler

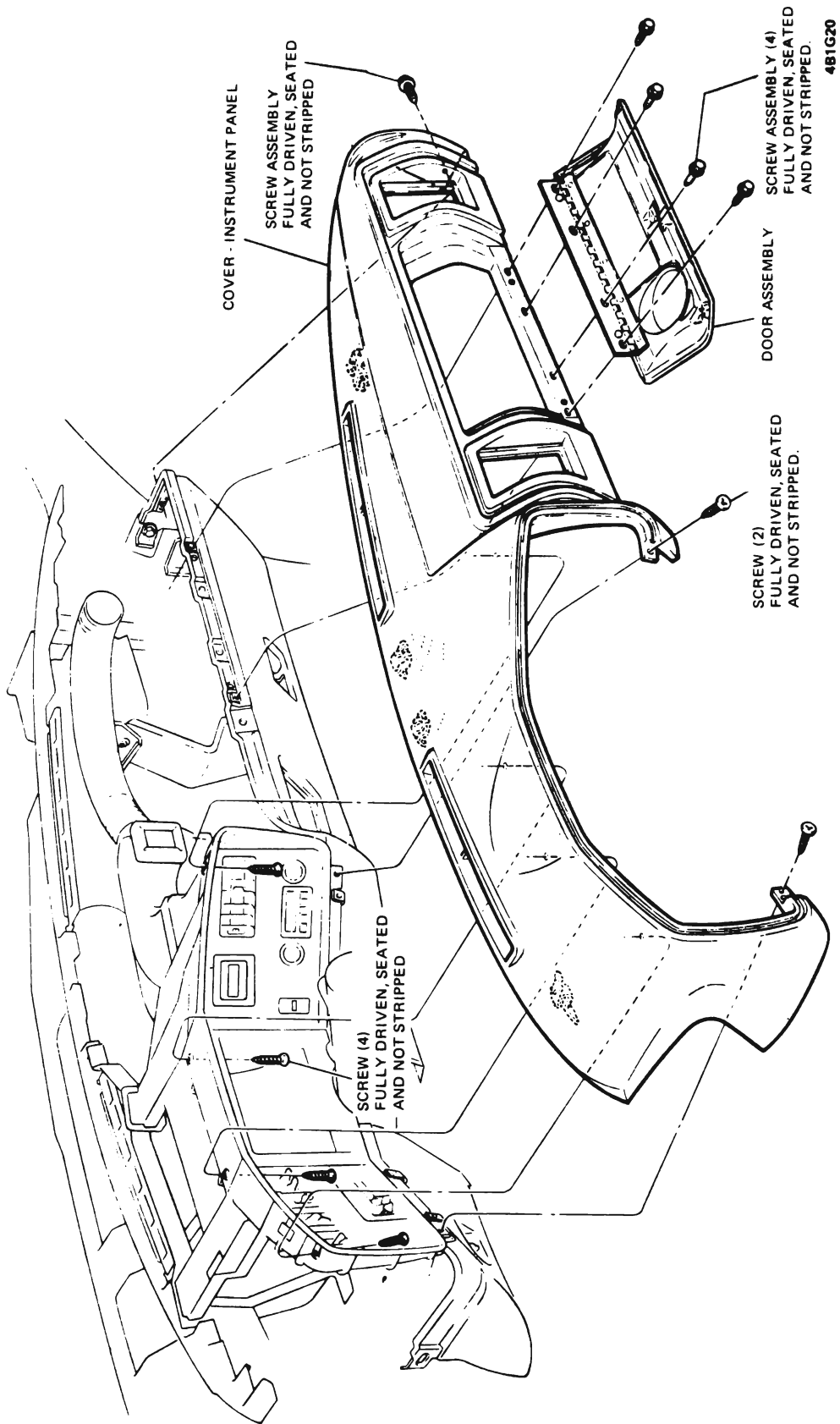


Figure 1G-20 "B-C-E" Series Instrument Panel Cover

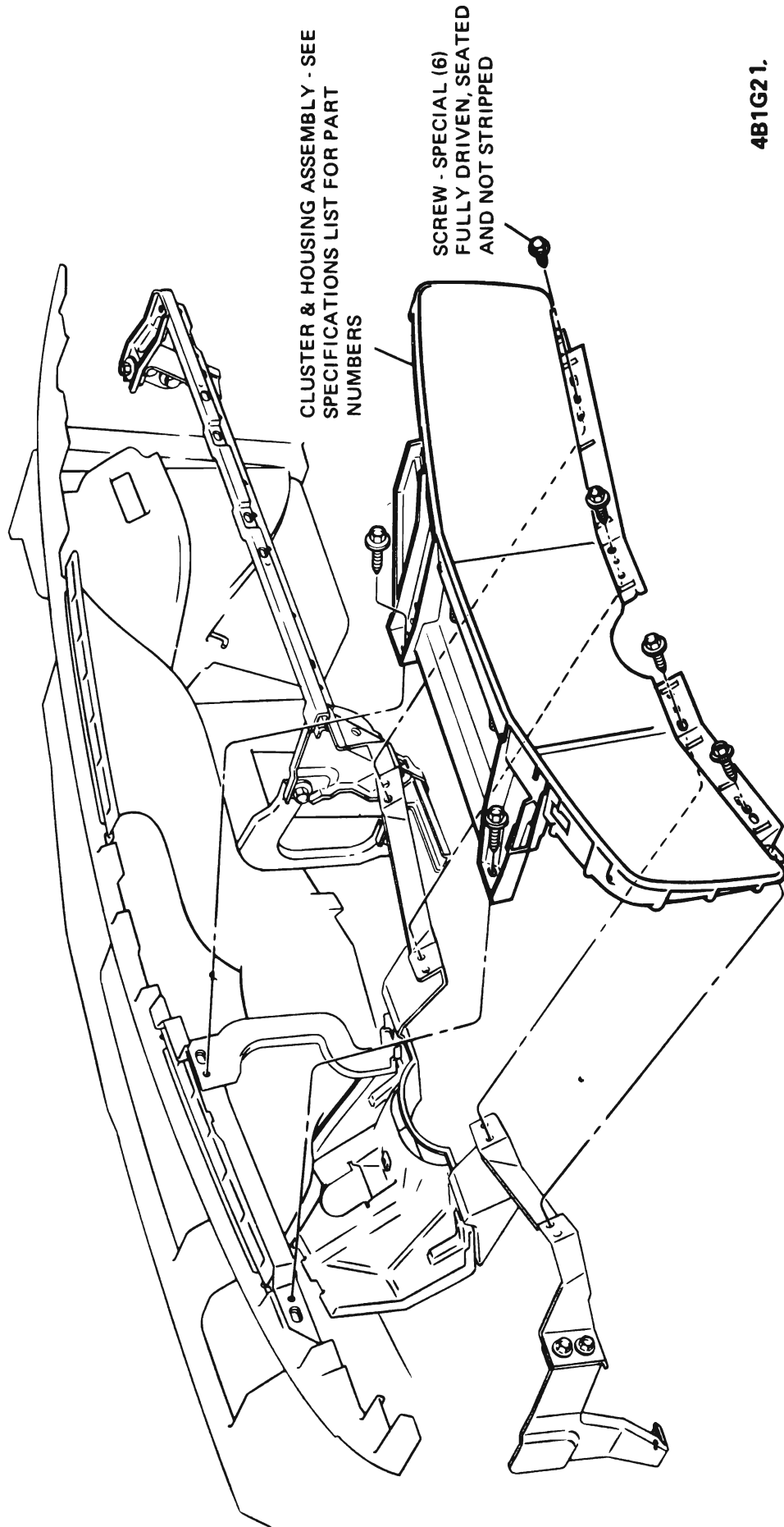


Figure 1G-21 "C-E" Series Instrument Panel Cluster and Housing



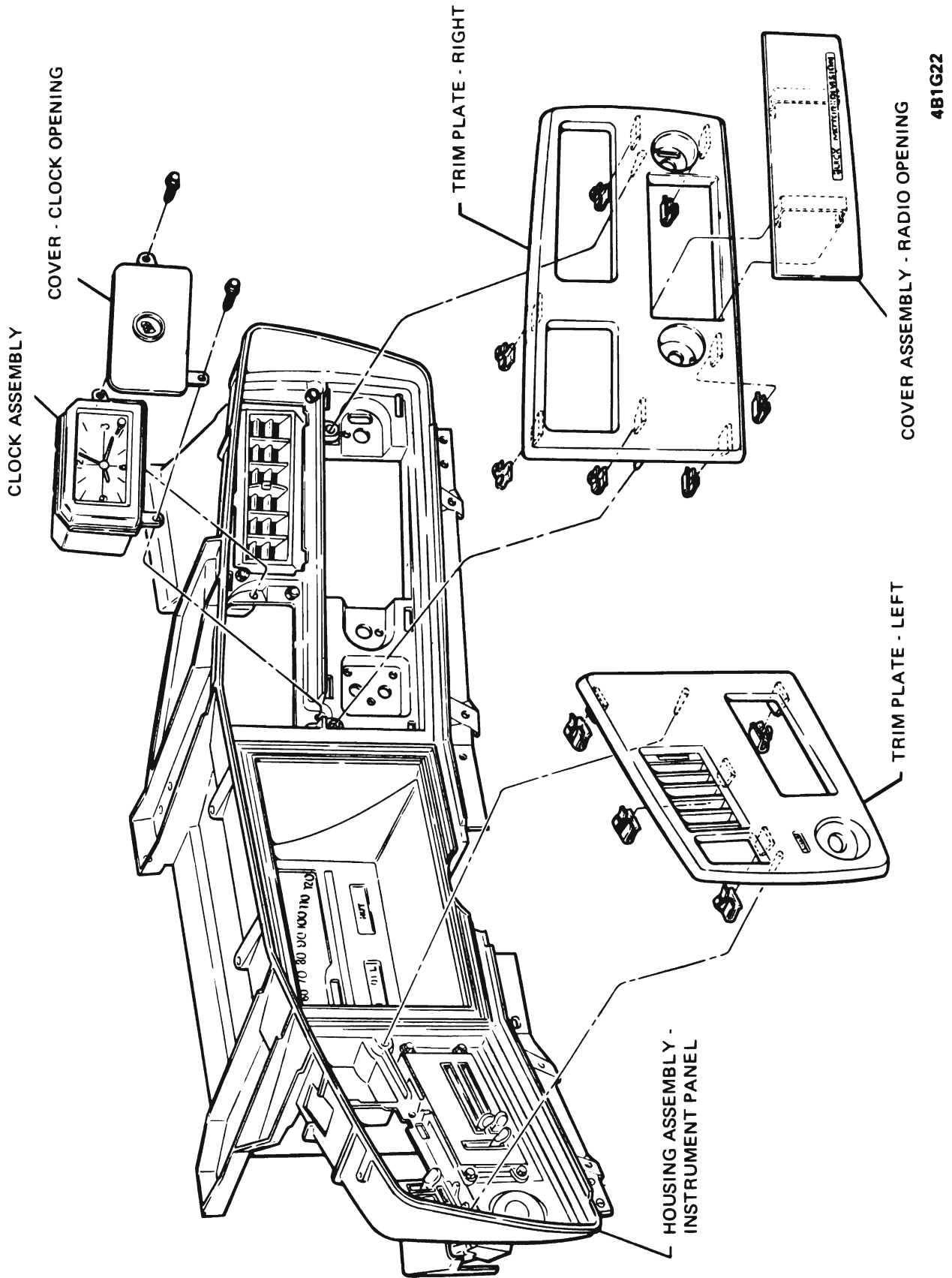


Figure 1G-22 "B-C-E" Series Instrument Panel Housing and Trim

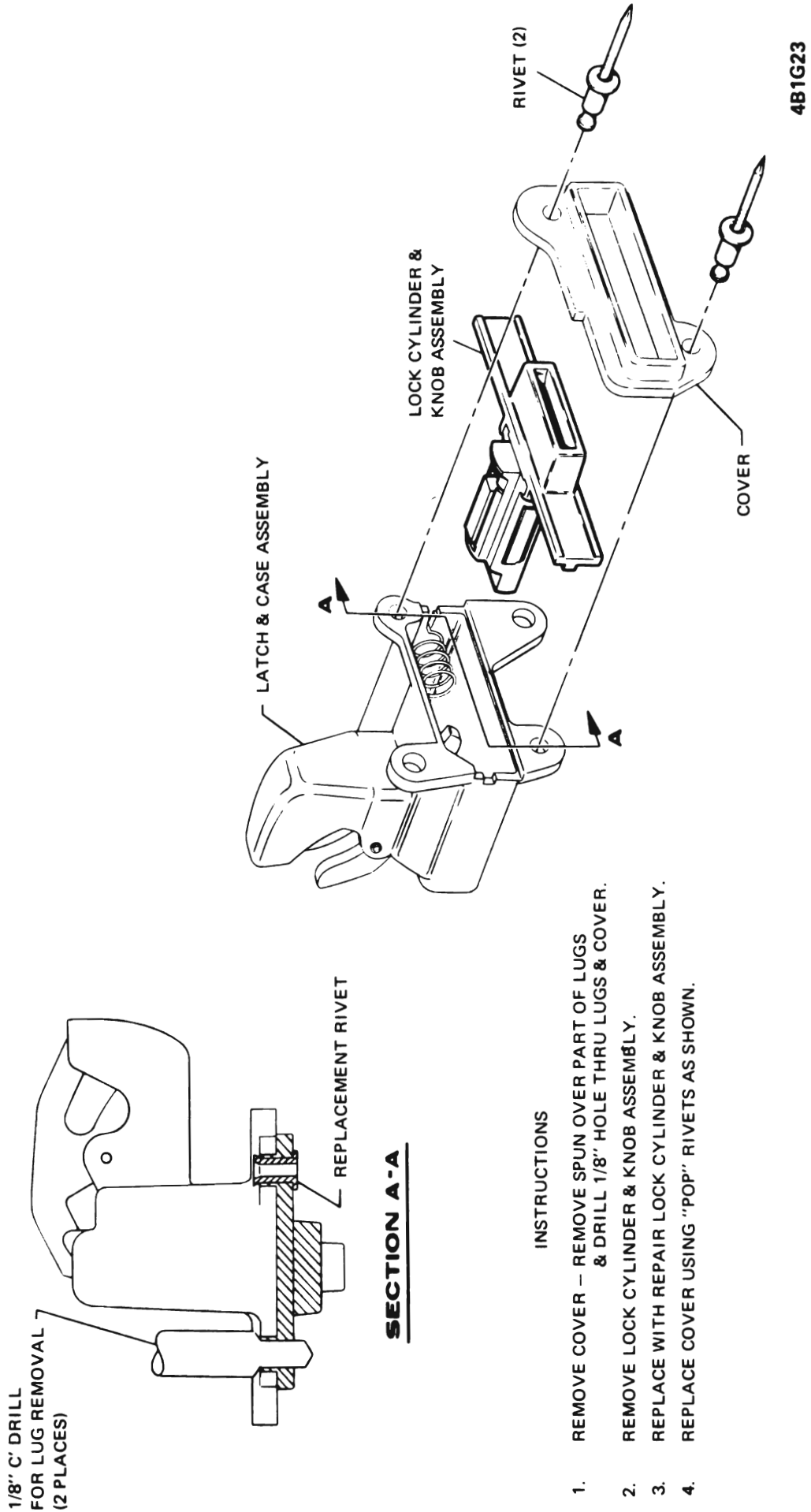
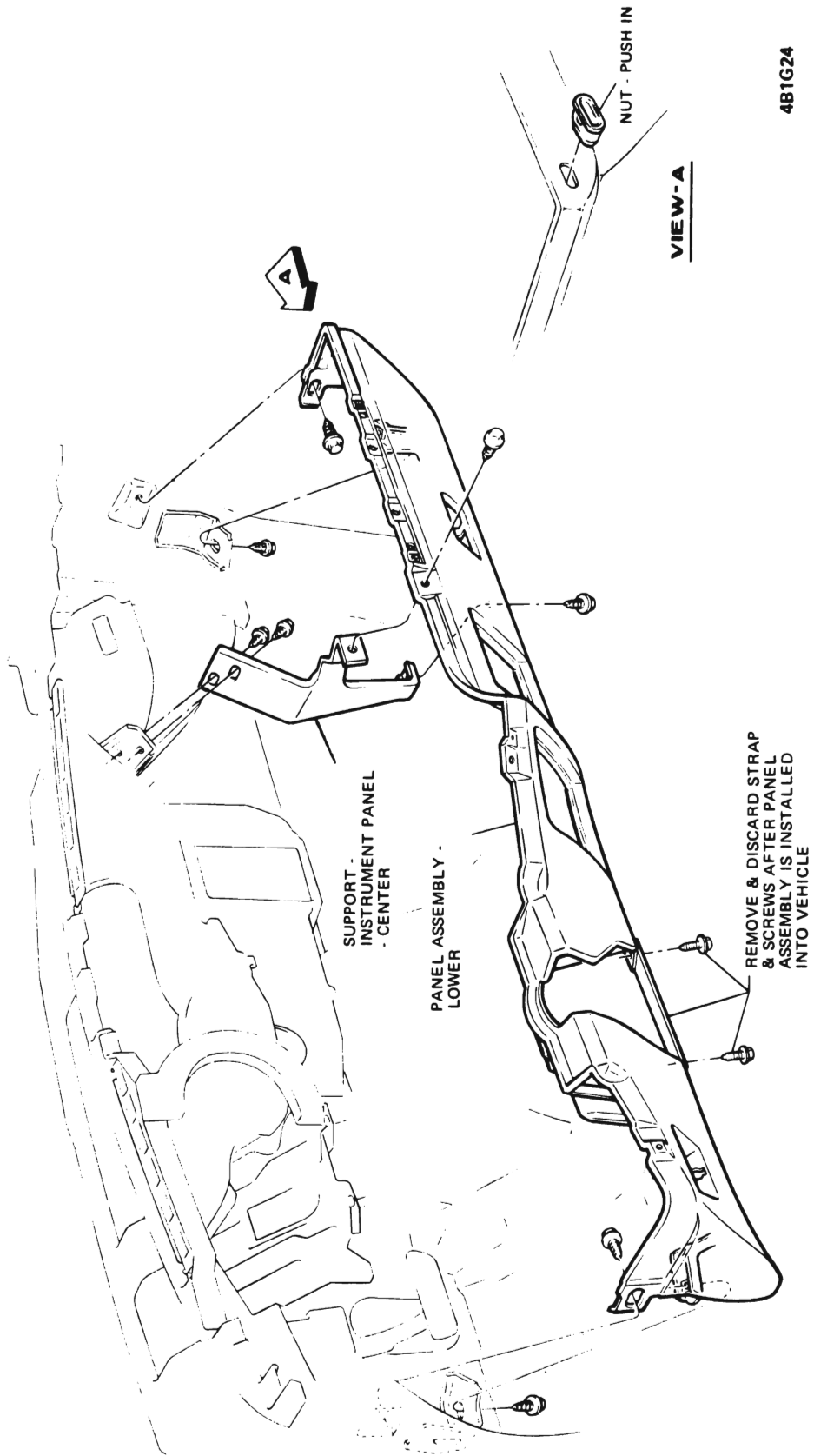


Figure 1G-23 "B-C-E" Series Glove Box Lock



4B1G24

Figure 1G-24 "B-C-E" Series Lower Instrument Panel

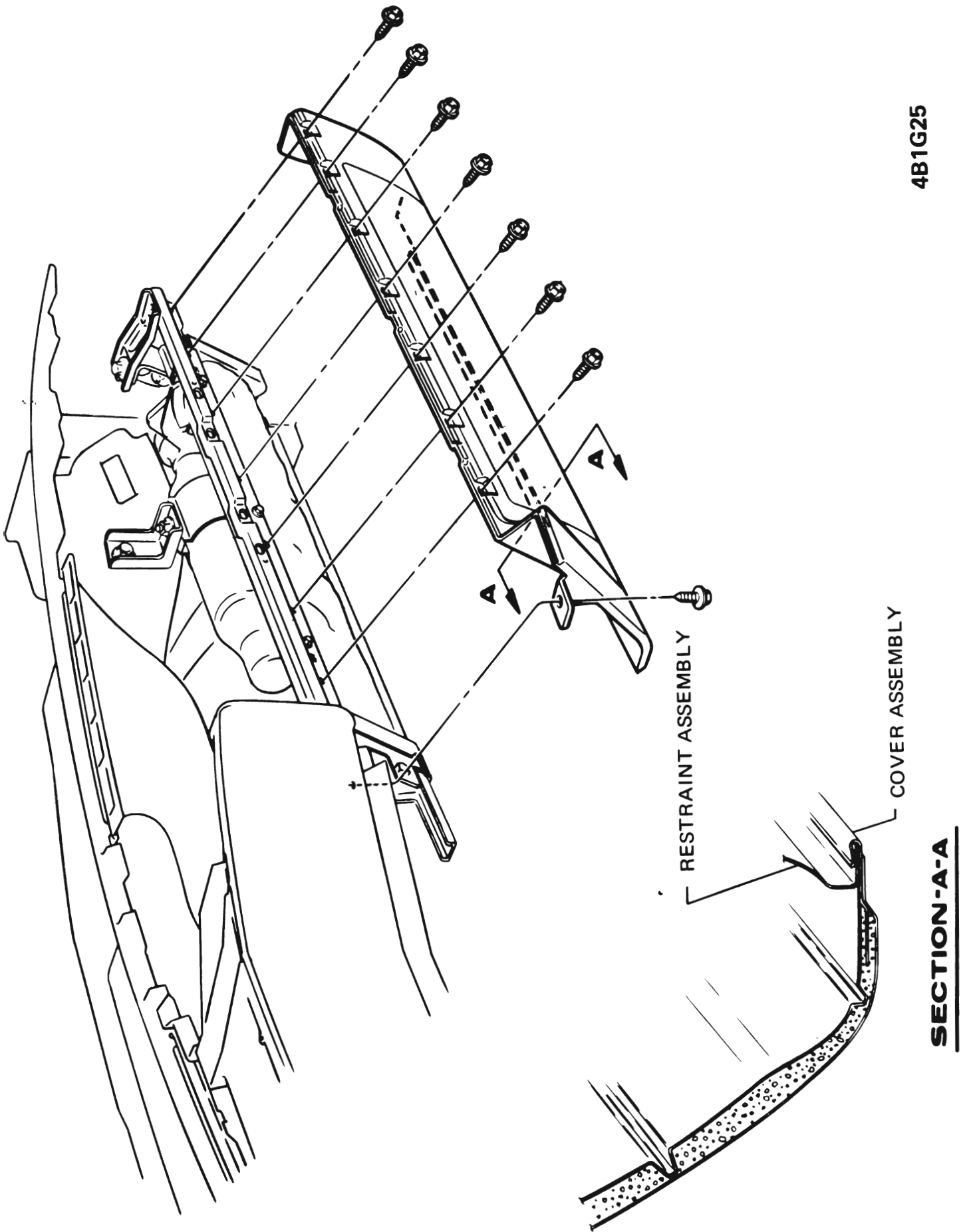
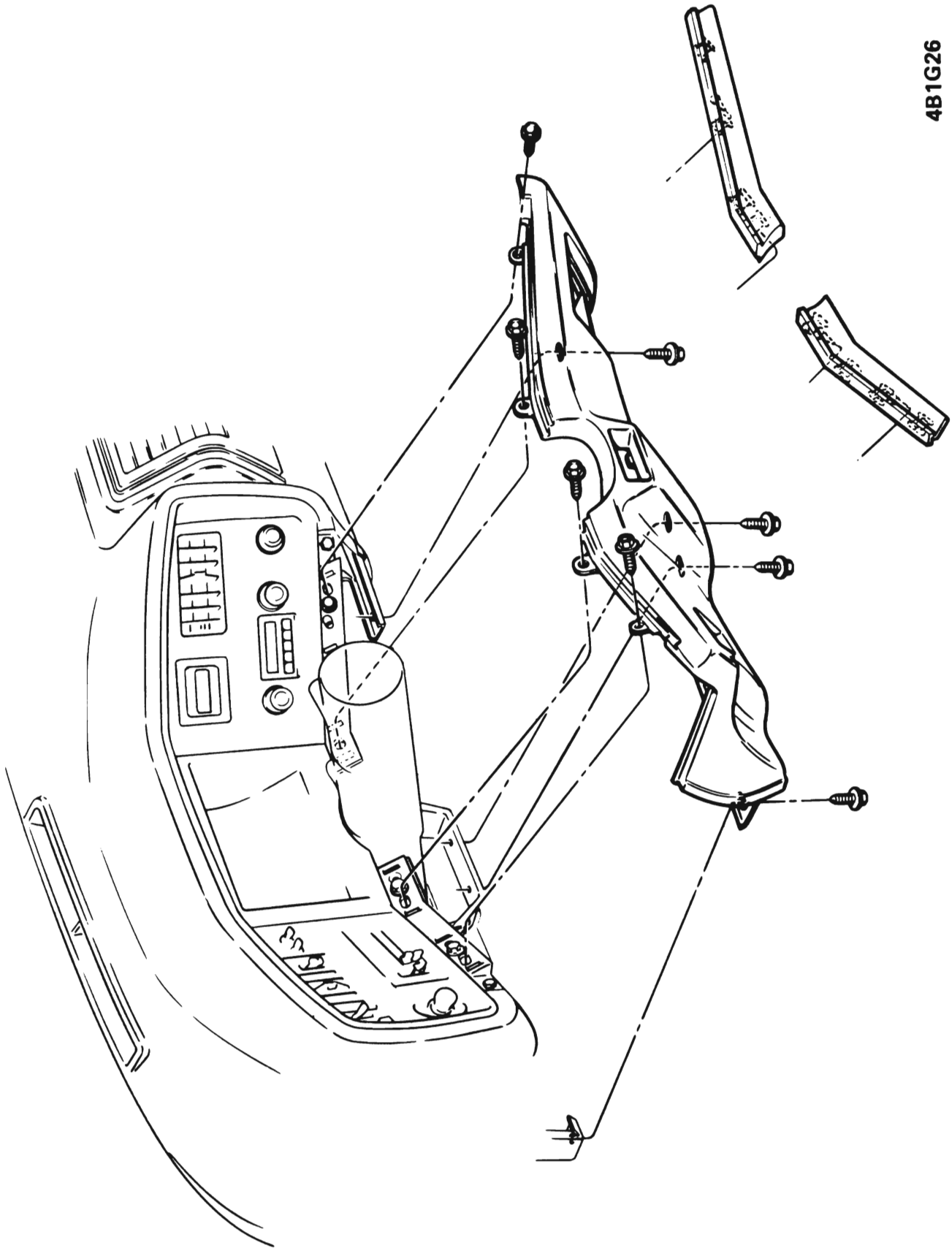


Figure 1G-25 "B-C-E" Series Instrument Panel Cover ACRS



4B1G26

Figure 1G-26 "B-C-E" Series Knee Restraint ACRS

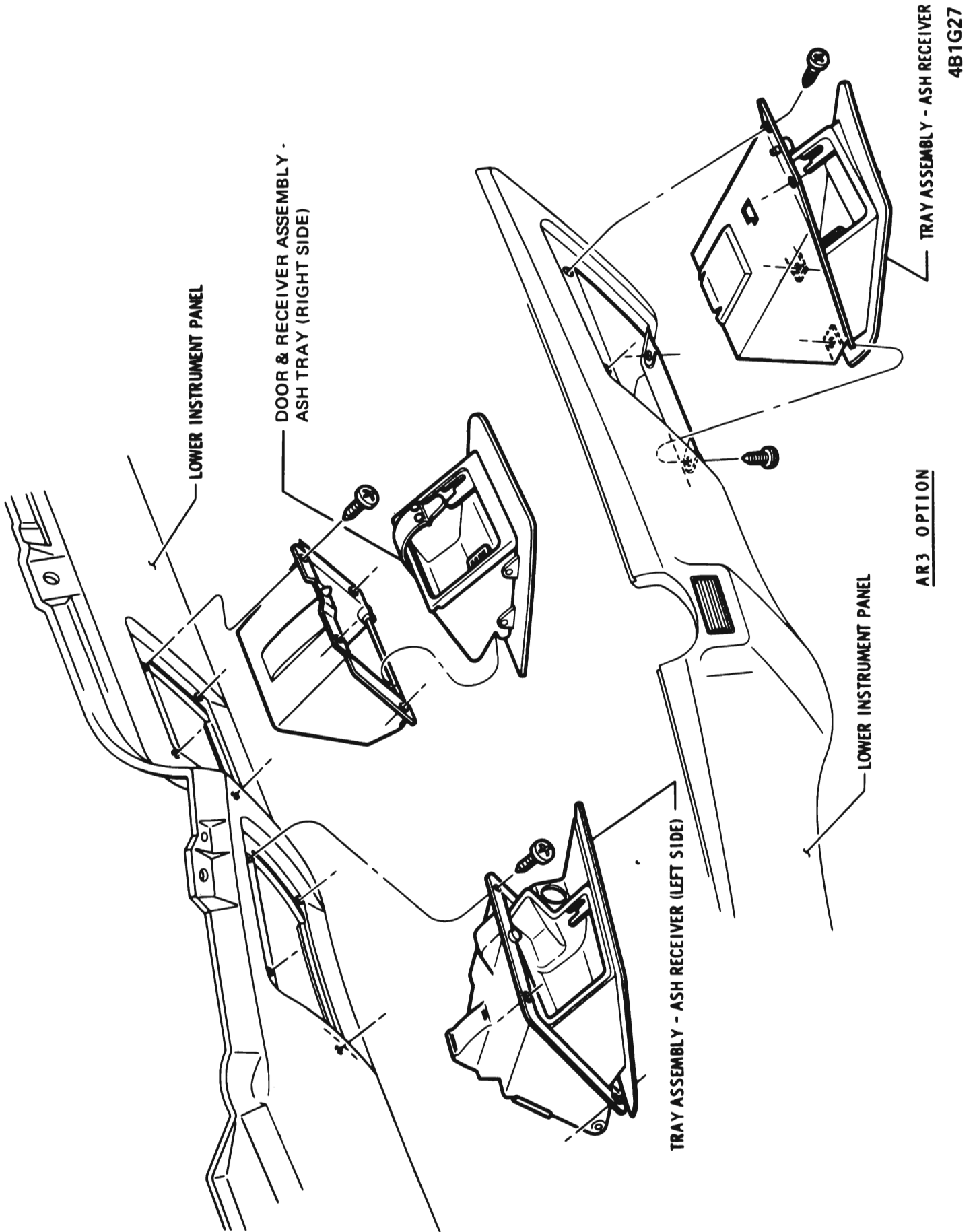


Figure 1G-27 "B-C-E" Series Ash Tray Assembly

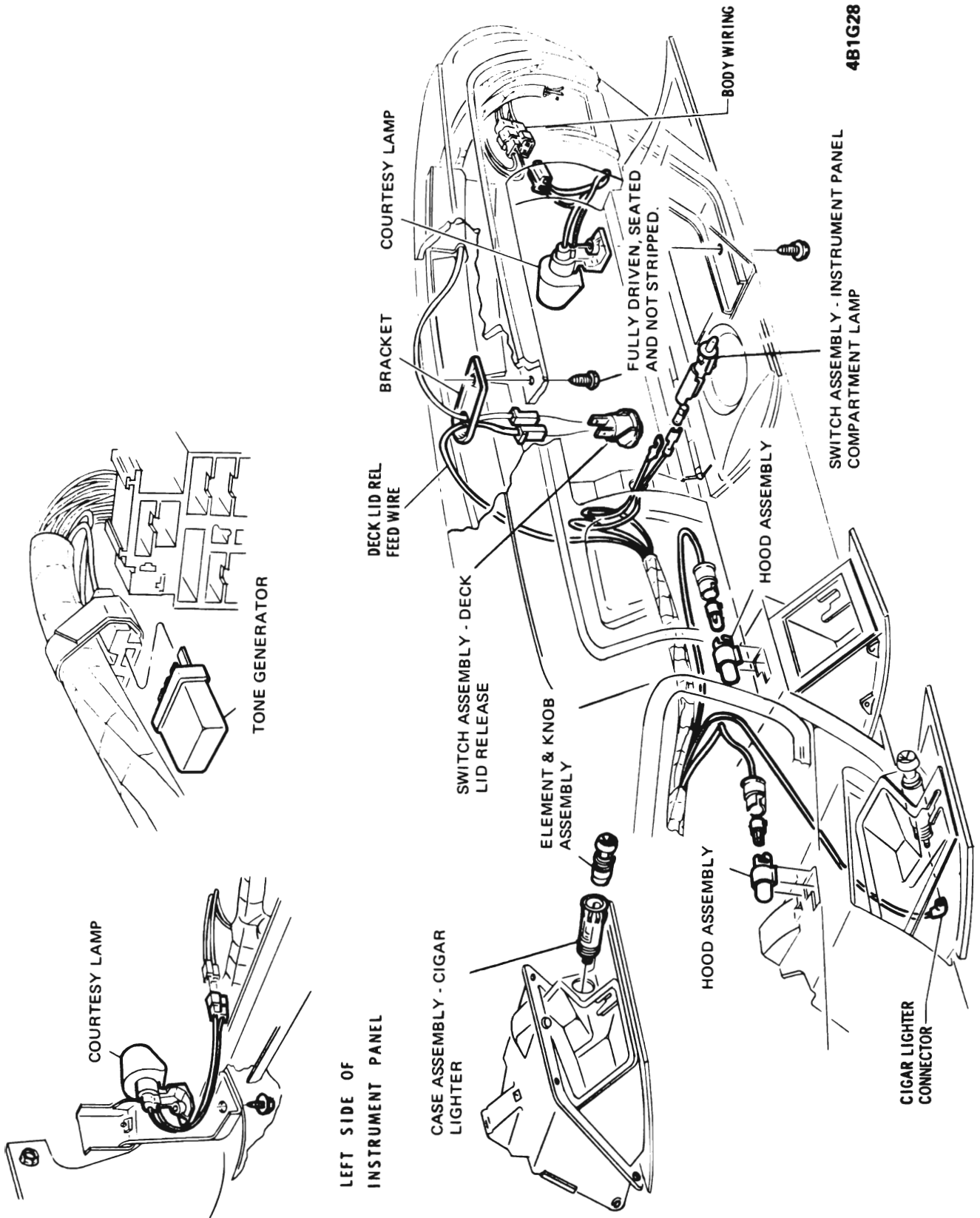


Figure 1G-28 "B-C-E" Series Wiring Right Side Instrument Panel

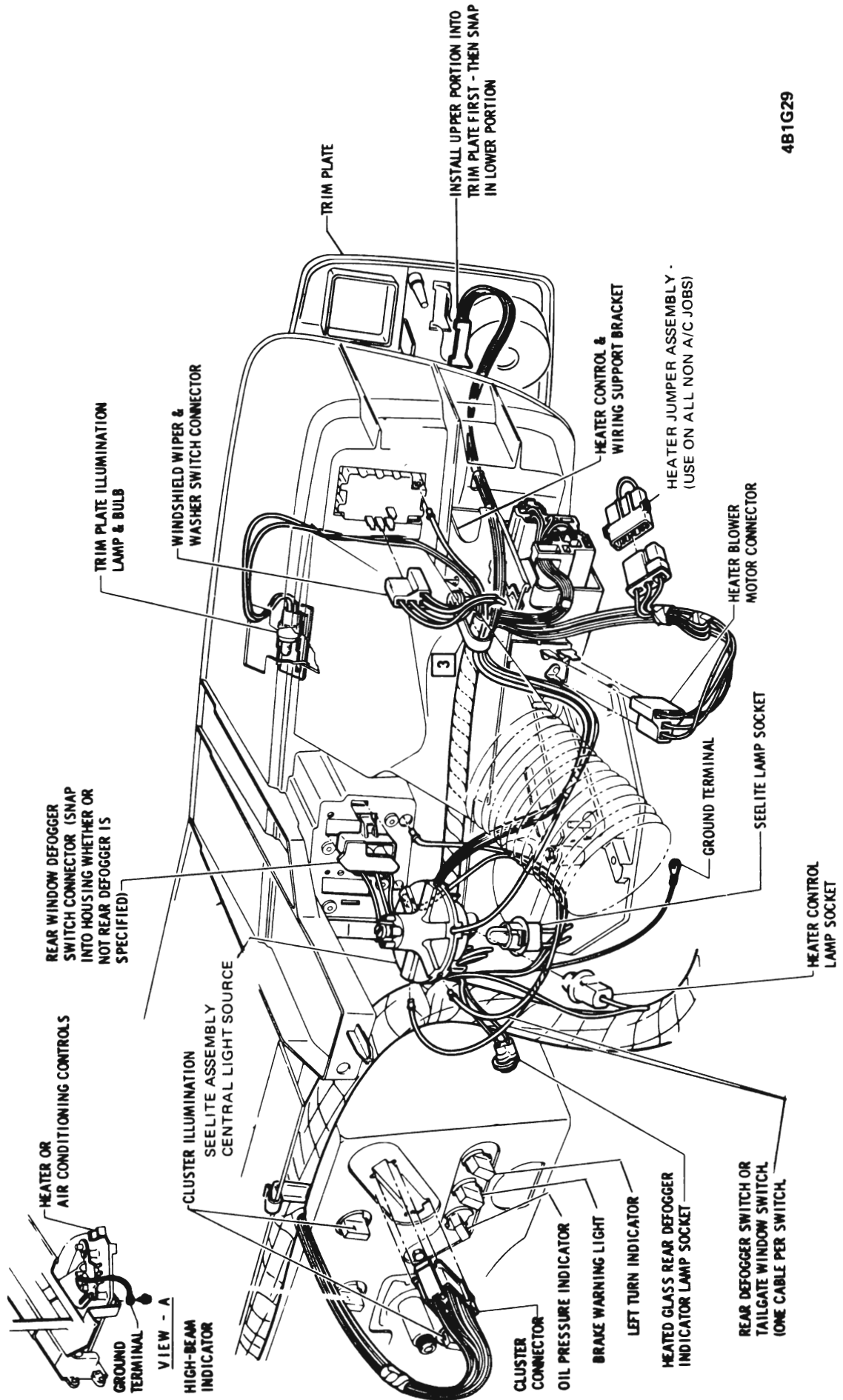
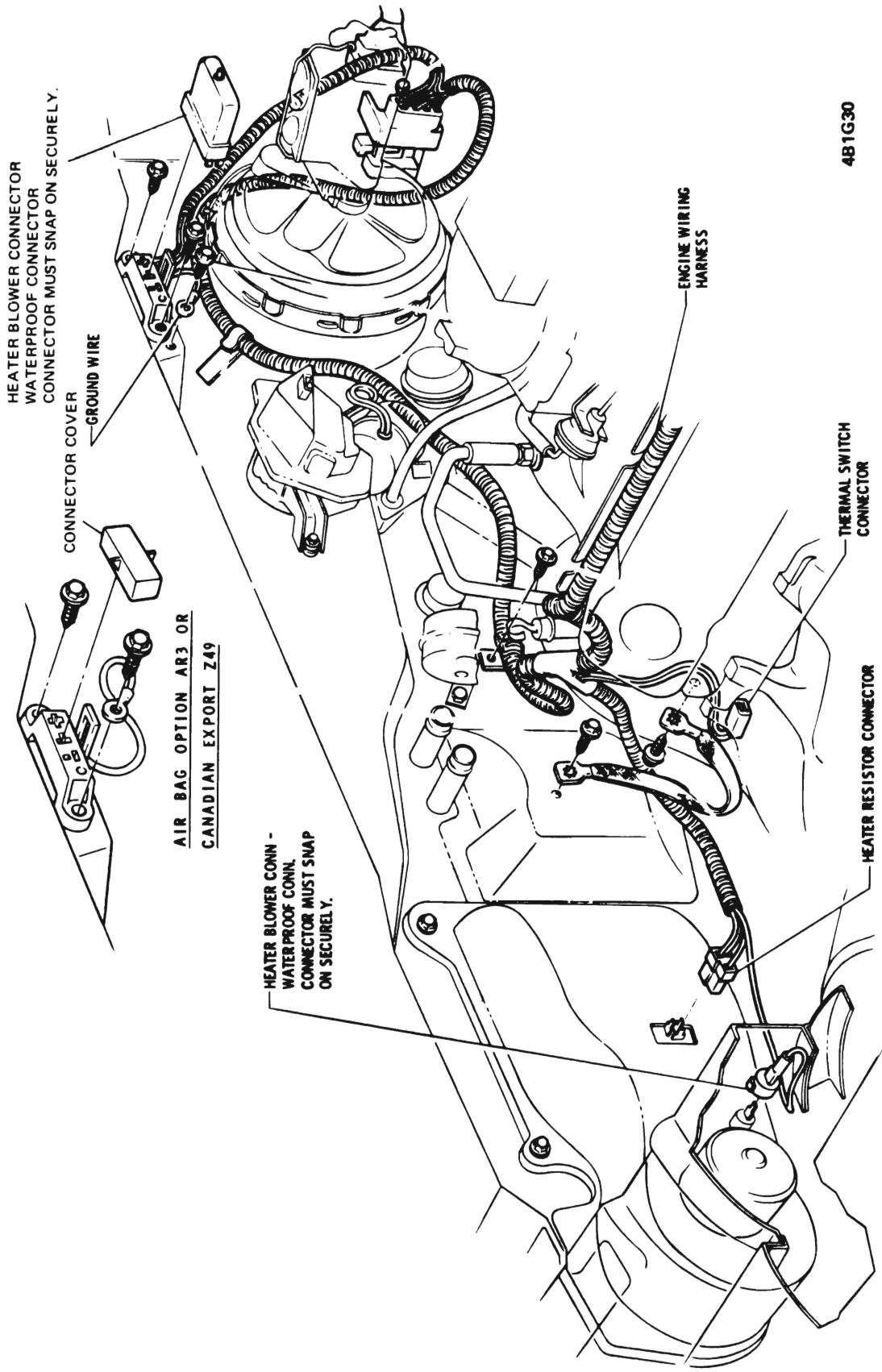


Figure 1G-29 "B-C-E" Series Wiring Left Side Instrument Panel





4BTG30

Figure 1G-30 "B-C-E" Series Engine Harness - Front of Dash

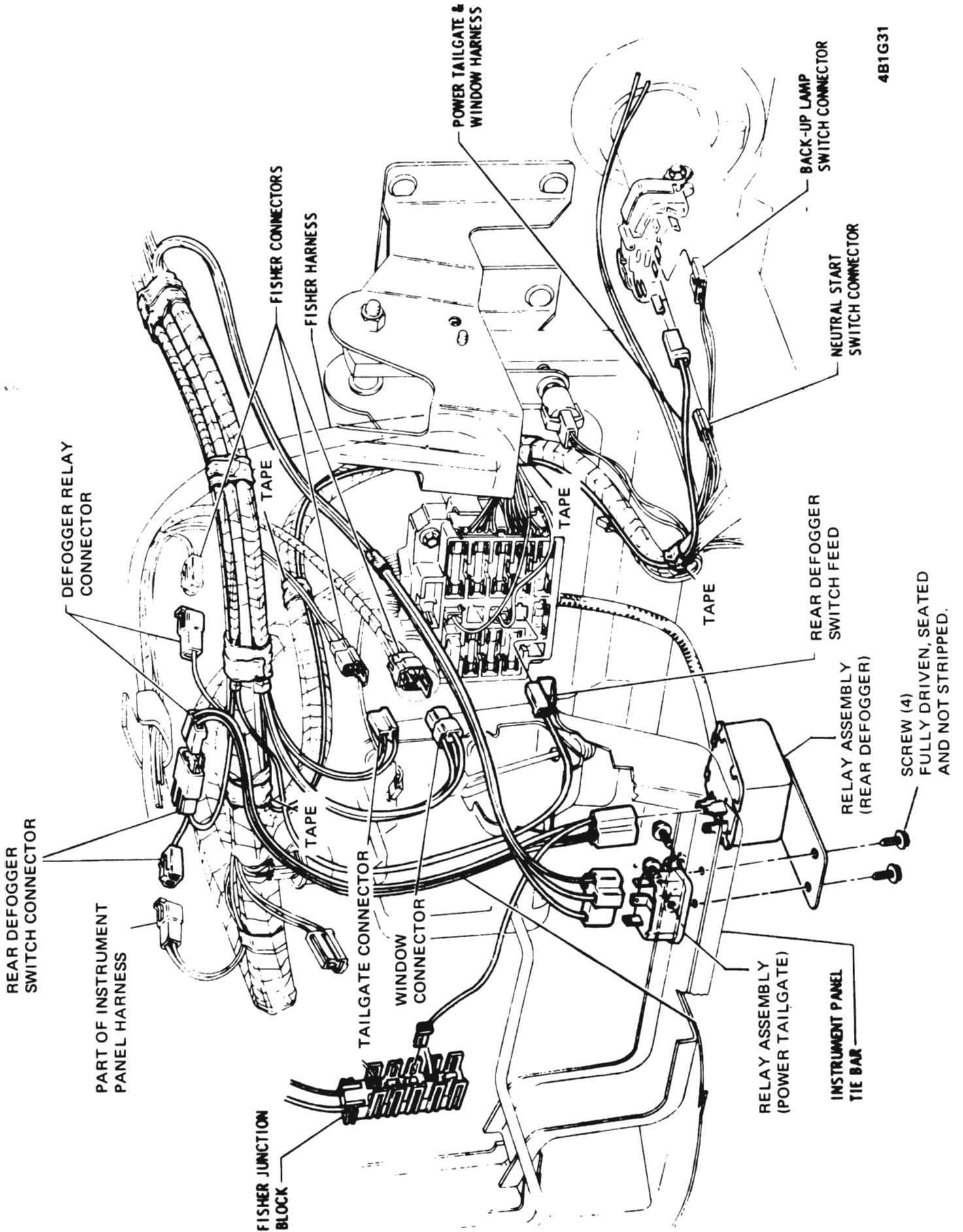
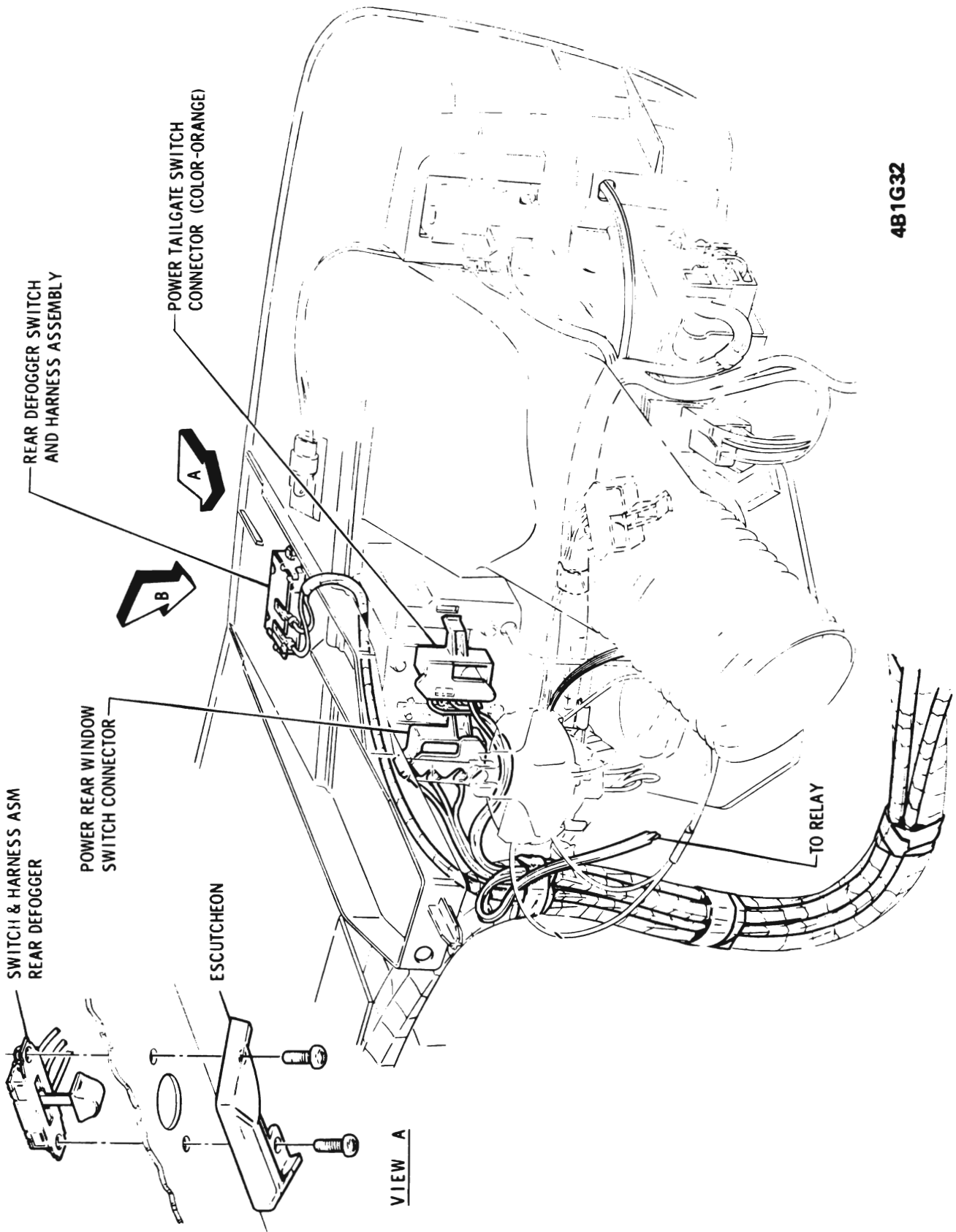


Figure 1G-31 "B" Series Wagon Wiring Fust Block



4B1G32

Figure 1G-32 "B" Series Wagon Rear Window Switches and Connectors

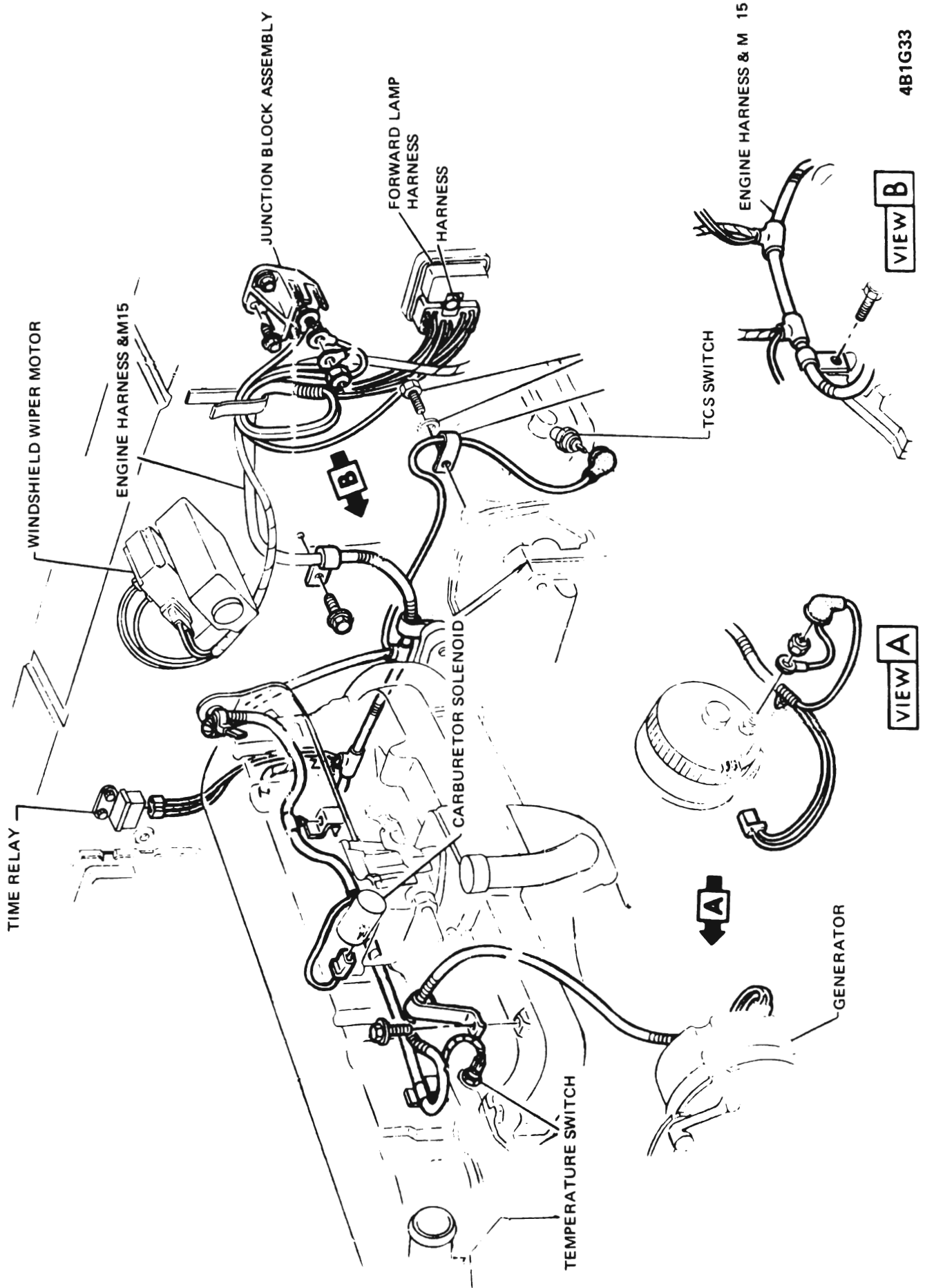


Figure 1G-33 "X" Series L-6 Engine Wiring

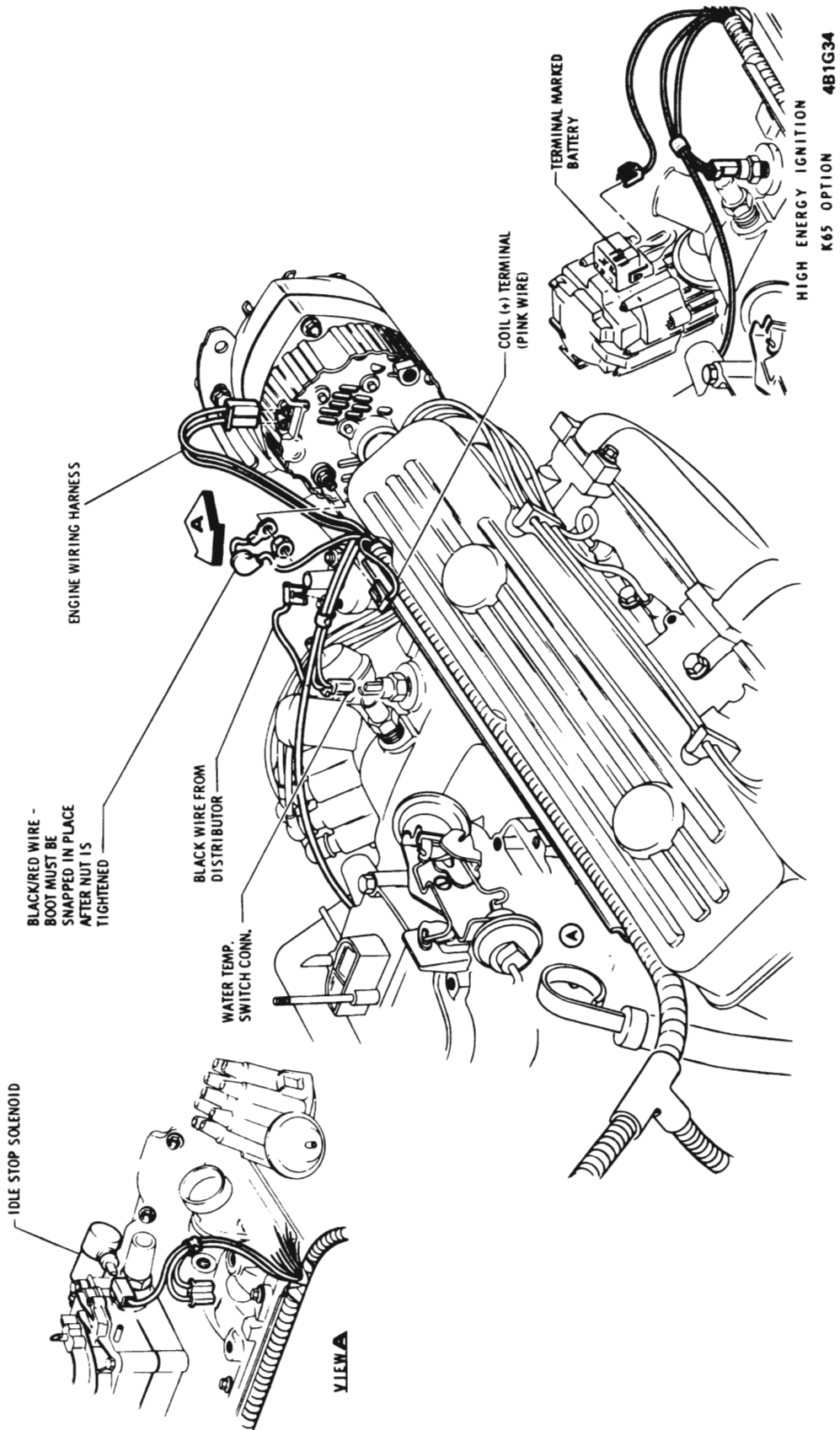


Figure 1G-34 All Series V-8 Engine Wiring