

# SECTION A

## ACCESSORIES ALL SERIES

### CONTENTS

Division	Subject	Paragraph
I	SPECIFICATIONS AND ADJUSTMENTS: (Not Applicable)	
II	DESCRIPTION AND OPERATION: (Not Applicable)	
III	SERVICE PROCEDURES: Removal and Installation Obvious Upon Inspection. See Illustrations.	
IV	TROUBLE DIAGNOSIS: (Not Applicable)	

### INDEX OF ILLUSTRATIONS

150-1	45-46-48000 Series Four Note Horn
150-2	49000 Series Four Note Horn
150-3	Special and Riviera Guide-Matic
150-4	LeSabre, Wildcat and Electra Guide-Matic
150-6	All Models Guide-Matic
150-7	All Series Spotlamp Installation
150-8	All Series Compass Installation
150-9	43-44000 Series (V-8) Engine Block Heater
150-10	45-46-48000 Series Engine Block Heater
150-11	All Series Citizens Band Radio (1)
150-12	All Series Citizens Band Radio (2)
150-13	43-44000 Series Electric Trunk Latch (1)
150-14	43-44000 Series Electric Trunk Latch (2)
150-15	45-46-48000 Series Electric Trunk Latch (1)
150-16	45-46-48000 Series Electric Trunk Latch (2)
150-17	49000 Series Electric Trunk Latch (1)
150-18	49000 Series Electric Trunk Latch (2)

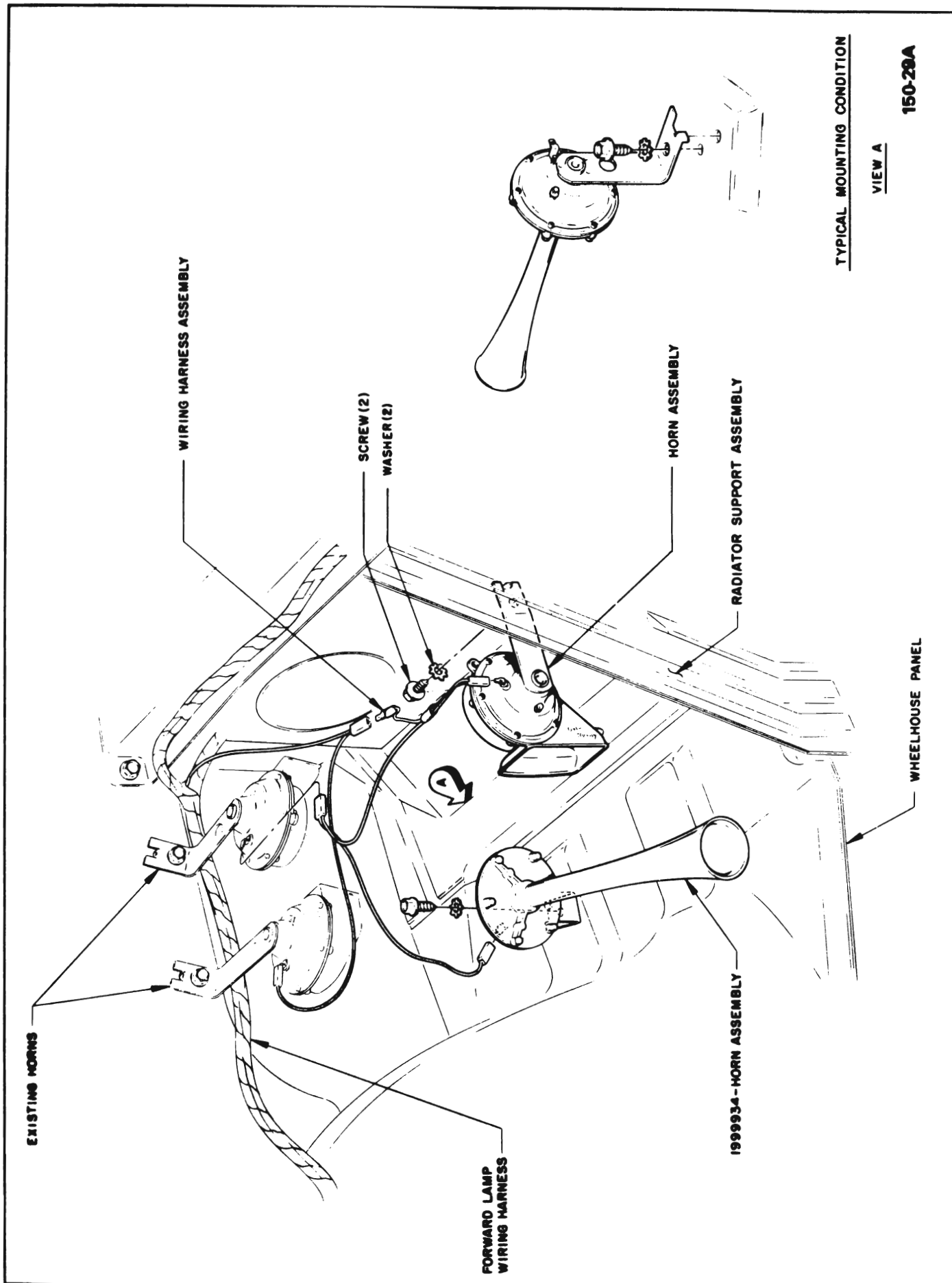
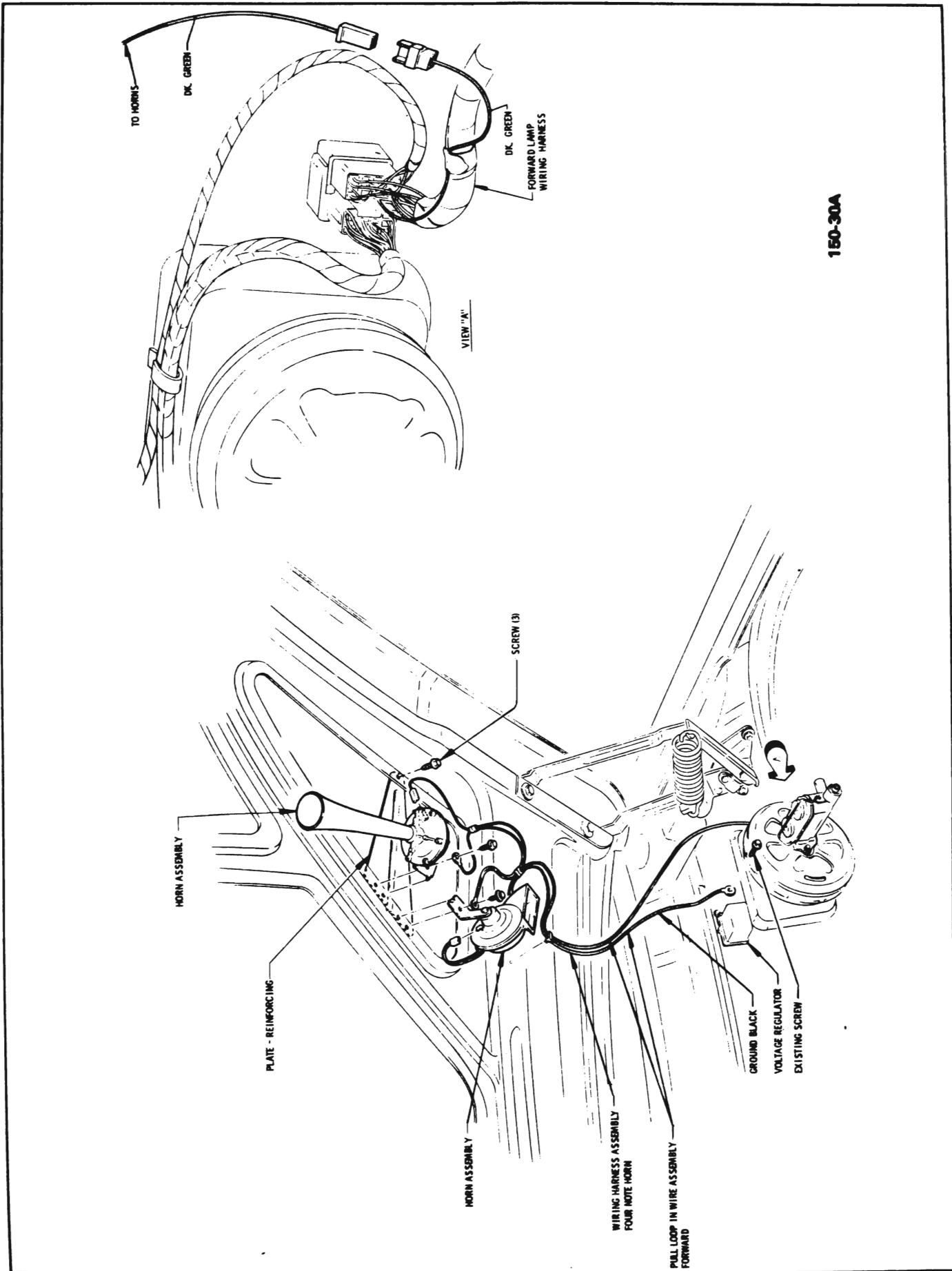
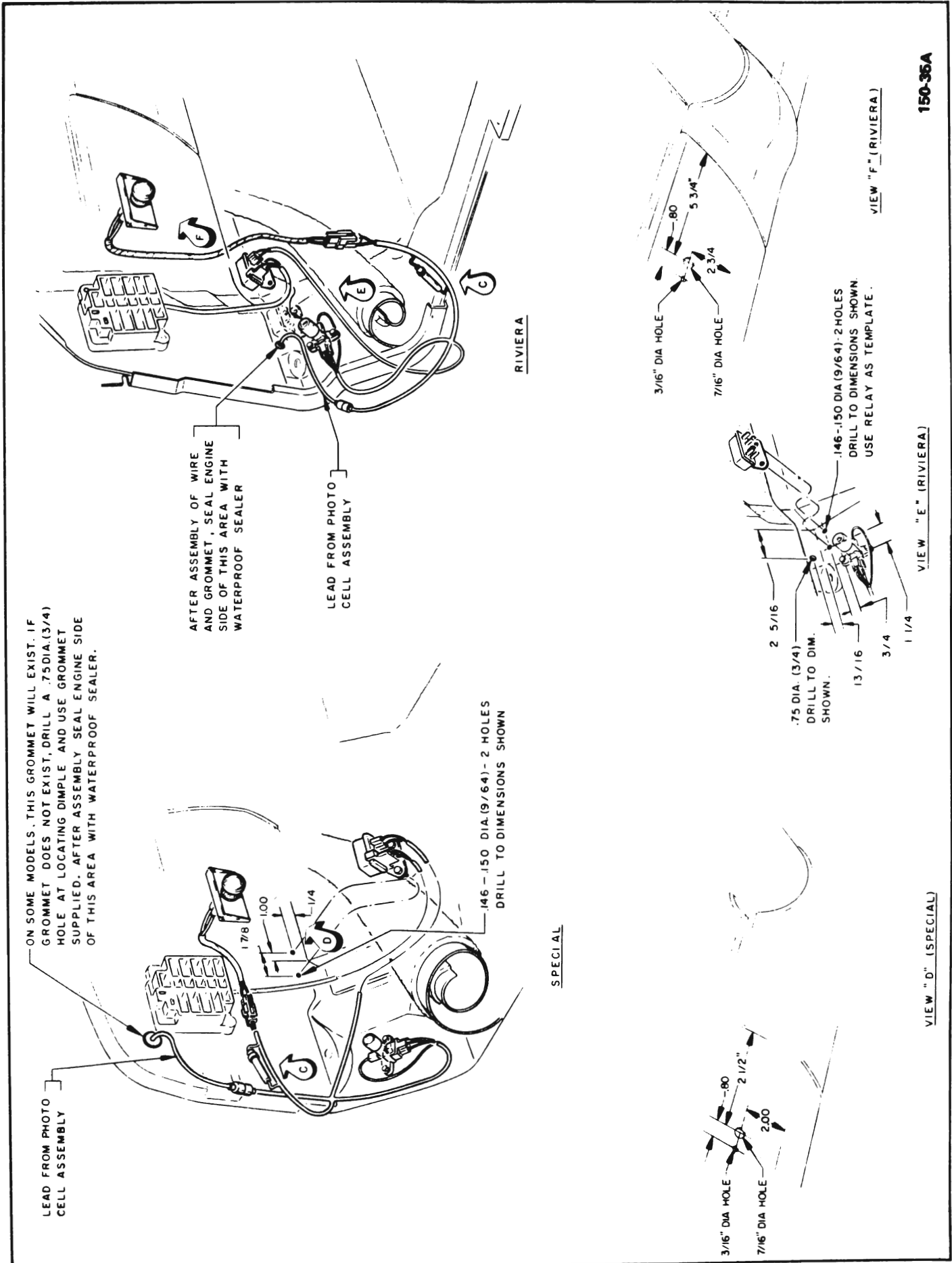


Fig. 150-1 45-46-48000 Series Four Note Horn



150-30A

Fig. 150-2 49000 Series Four Note Horn



150-36A

Fig. 150-3 Special and Riviera Guide-Matic

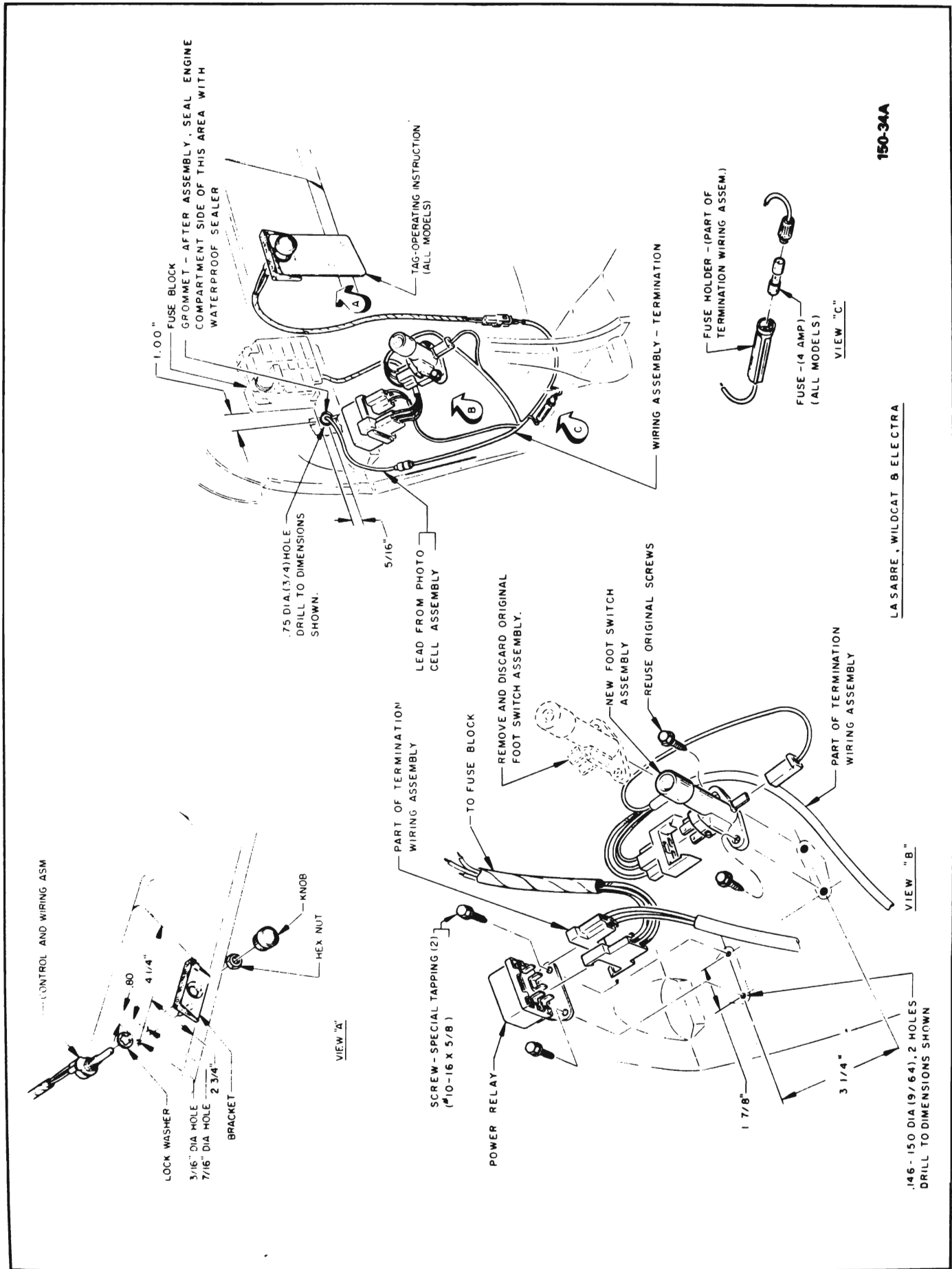


Fig. 150-4 LeSabre, Wildcat and Electra Guide-Matic

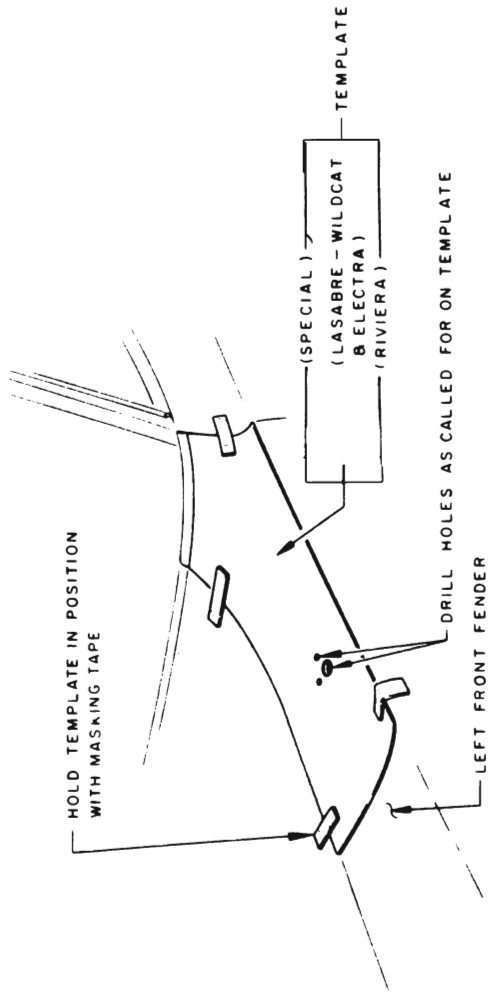


FIG "G" ( ALL MODELS )

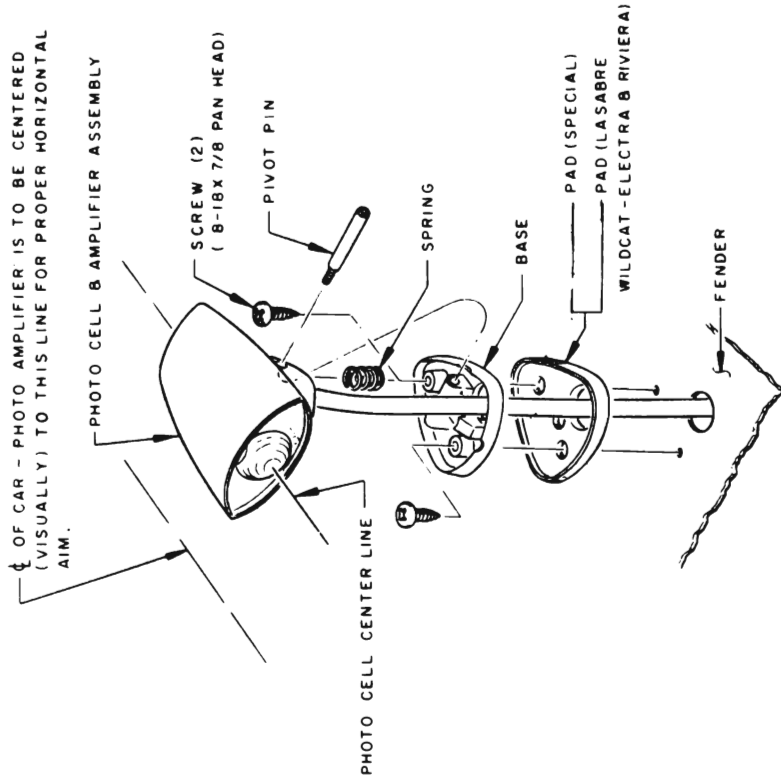


FIG "H" ( ALL MODELS )

DO NOT DISTURB THIS SCREW:  
 (THIS IS USED FOR CALIBRATING THE DEVICE AT THE FACTORY. IF THE DEVICE IS DAMAGED OR THIS SCREW IS DISTURBED, THE DEVICE MUST BE RETURNED TO THE MANUFACTURER FOR REPAIR AND/OR RECALIBRATION.)

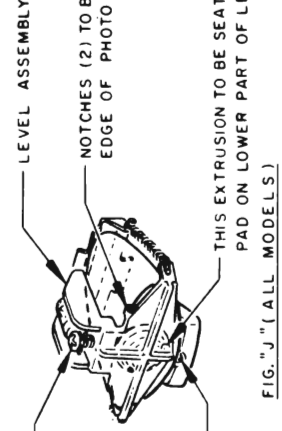
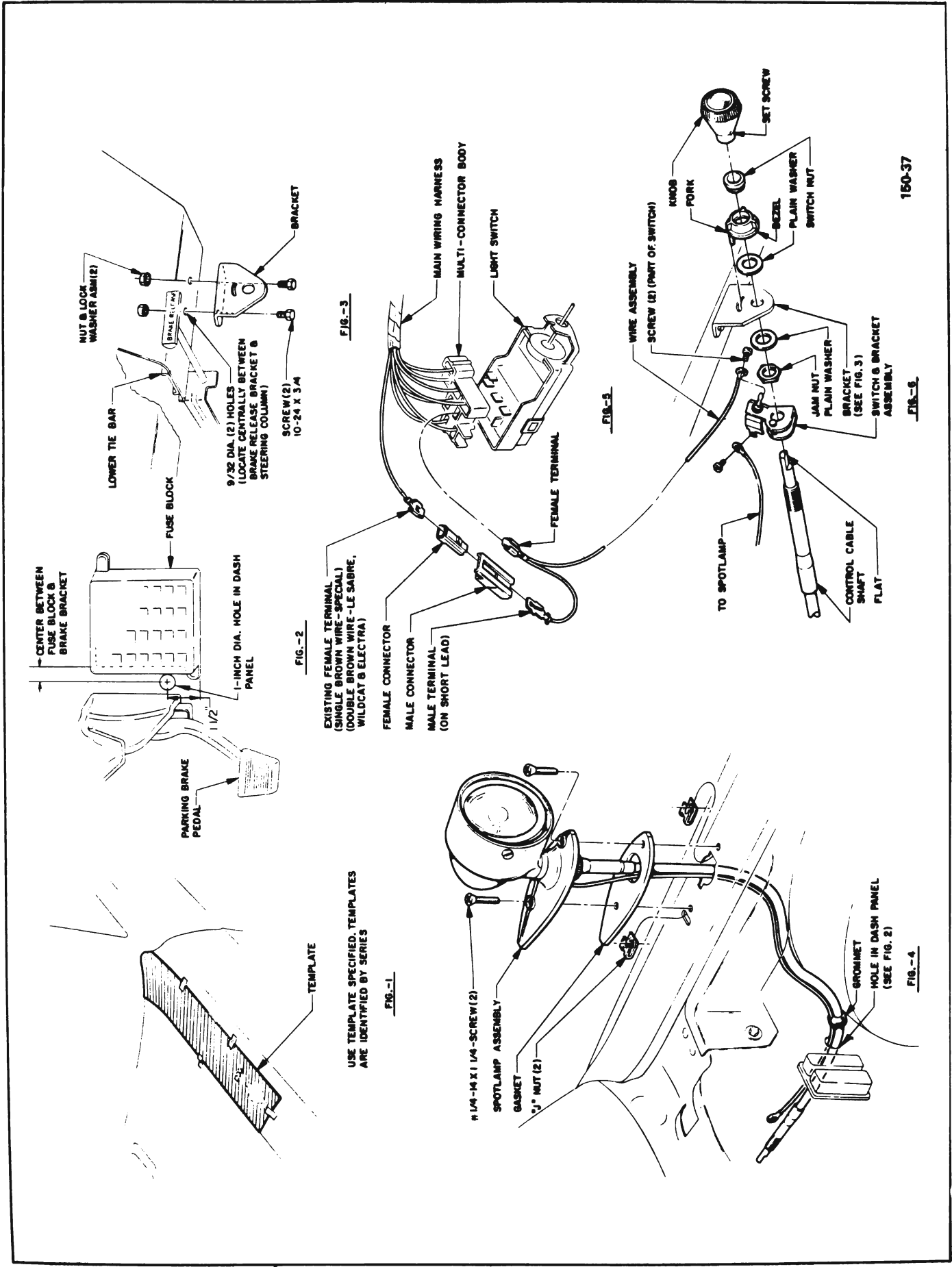


FIG. "J" ( ALL MODELS )

- PHOTO AMPLIFIER AIMING INSTRUCTIONS: —
- 1— THE PHOTO AMPLIFIER UNIT MUST BE ACCURATELY AIMED VERTICALLY, USING THE LEVEL ASSEMBLY. THE AIMING SHOULD BE DONE WITH CAR ON LEVEL FLOOR (WITHIN 1/4" FORE & AFT) TRUNK EMPTY (EXCEPT SPARE TIRE) AT LEAST 1/2 TANK OF GAS AND TIRES AT CORRECT PRESSURE
  - 2— INSTALL DEVICE AS SHOWN IN FIG "J". MAKE SURE IT IS PROPERLY SEATED ON FRONT EDGE OF CASTING AND LENS PAD.
  - 3— ADJUST AIMING SCREW WITH "ALLEN" WRENCH UNTIL LEVEL BUBBLE IS CENTERED.
- NOTE: — ALWAYS MAKE FINAL ADJUSTMENT WHILE TURNING SCREW CLOCKWISE. HORIZONTAL AIM IS EXPLAINED IN FIG. "H"

Fig. 150-6 All Models Guide-Matic



150-37

Fig. 150-7 All Series Spotlamp Installation

**CAUTION:**—  
PRESELECT POSITION OF COMPASS ON WINDSHIELD BEFORE  
REMOVING PAPER BACKING ON THE MOUNTING PLATE.  
REMOVAL IS NOT POSSIBLE WITHOUT BREAKING.

**NOTE:**—  
IN STATES WHERE IT IS PROHIBITED BY LAW TO CEMENT  
THE MOUNTING PLATE AND BRACKET TO THE WINDSHIELD,  
THE COMPASS MAY BE MOUNTED TO THE UPPER SURFACE OF  
THE INSTRUMENT PANEL COVER EITHER BY USE OF THE  
ADHESIVE BACKED MOUNTING PLATE, OR BY DRILLING A  
HOLE IN THE INSTRUMENT PANEL AND MOUNTING THE  
BRACKET WITH THE OVAL, WASHER HEAD SCREW  
PROVIDED. SEE VIEWS "B" & "C".

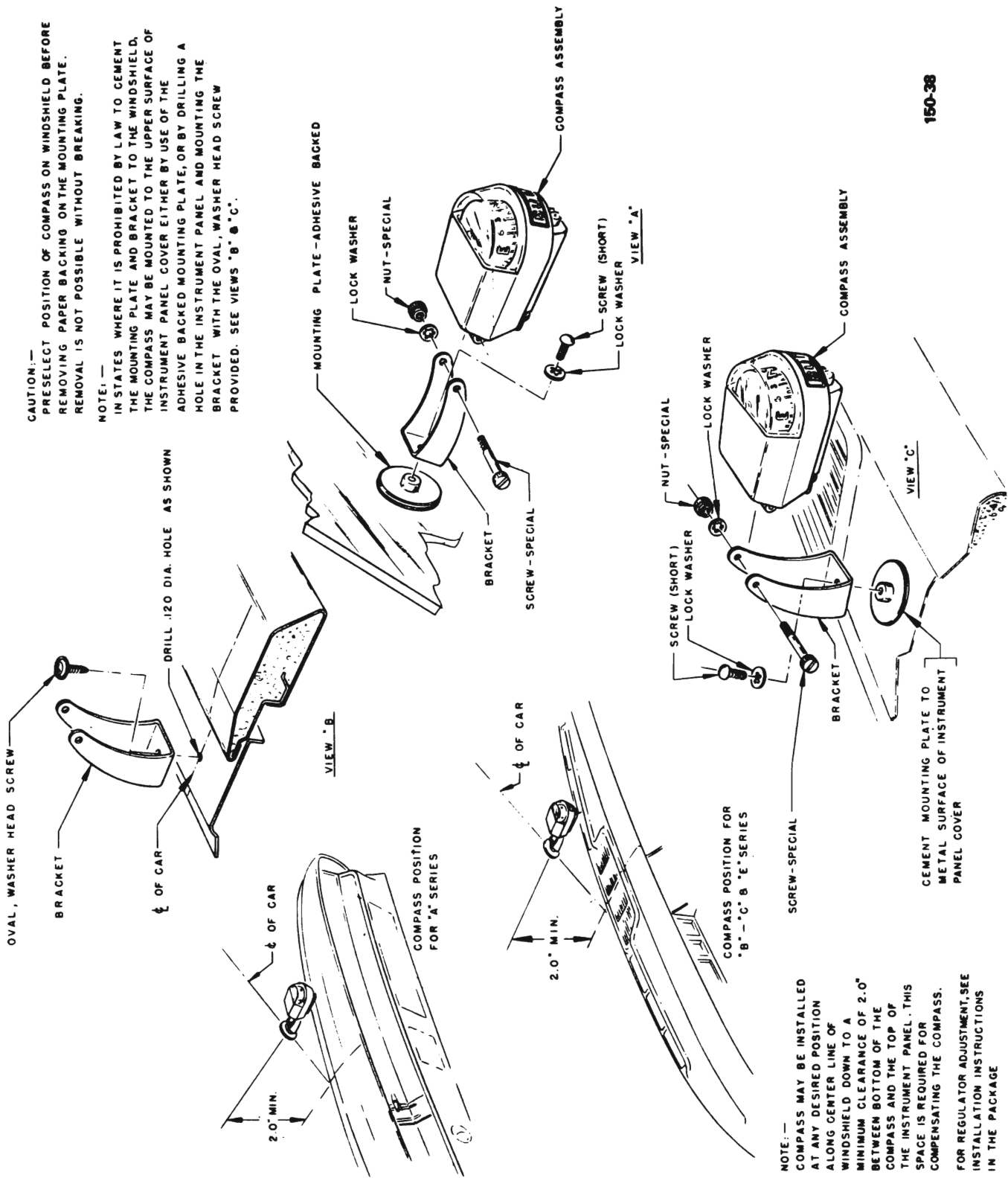


Fig. 150-8 All Series Compass Installation



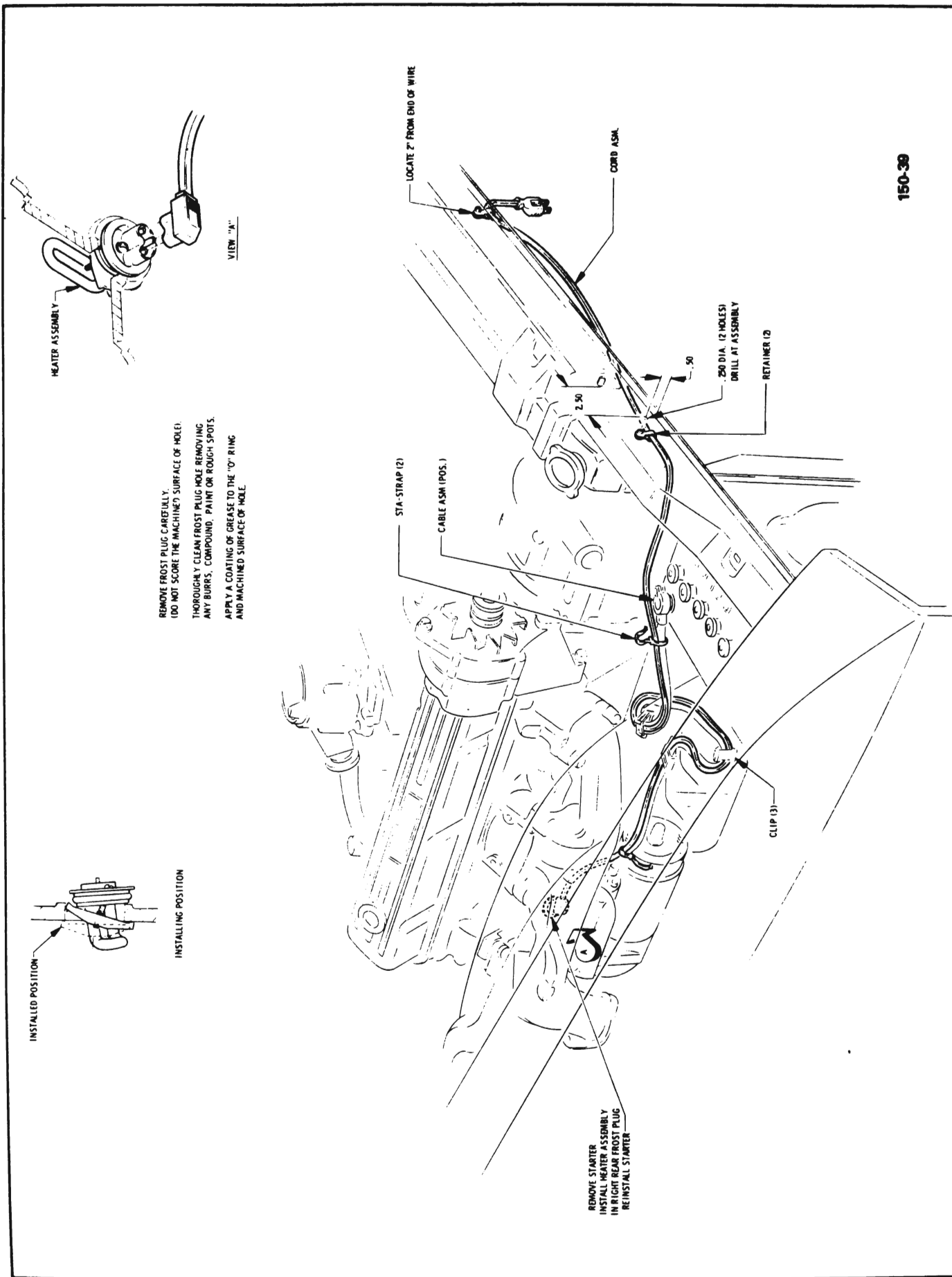


Fig. 150-9 43-44000 Series (v8)  
Engine Block Heater

150-40

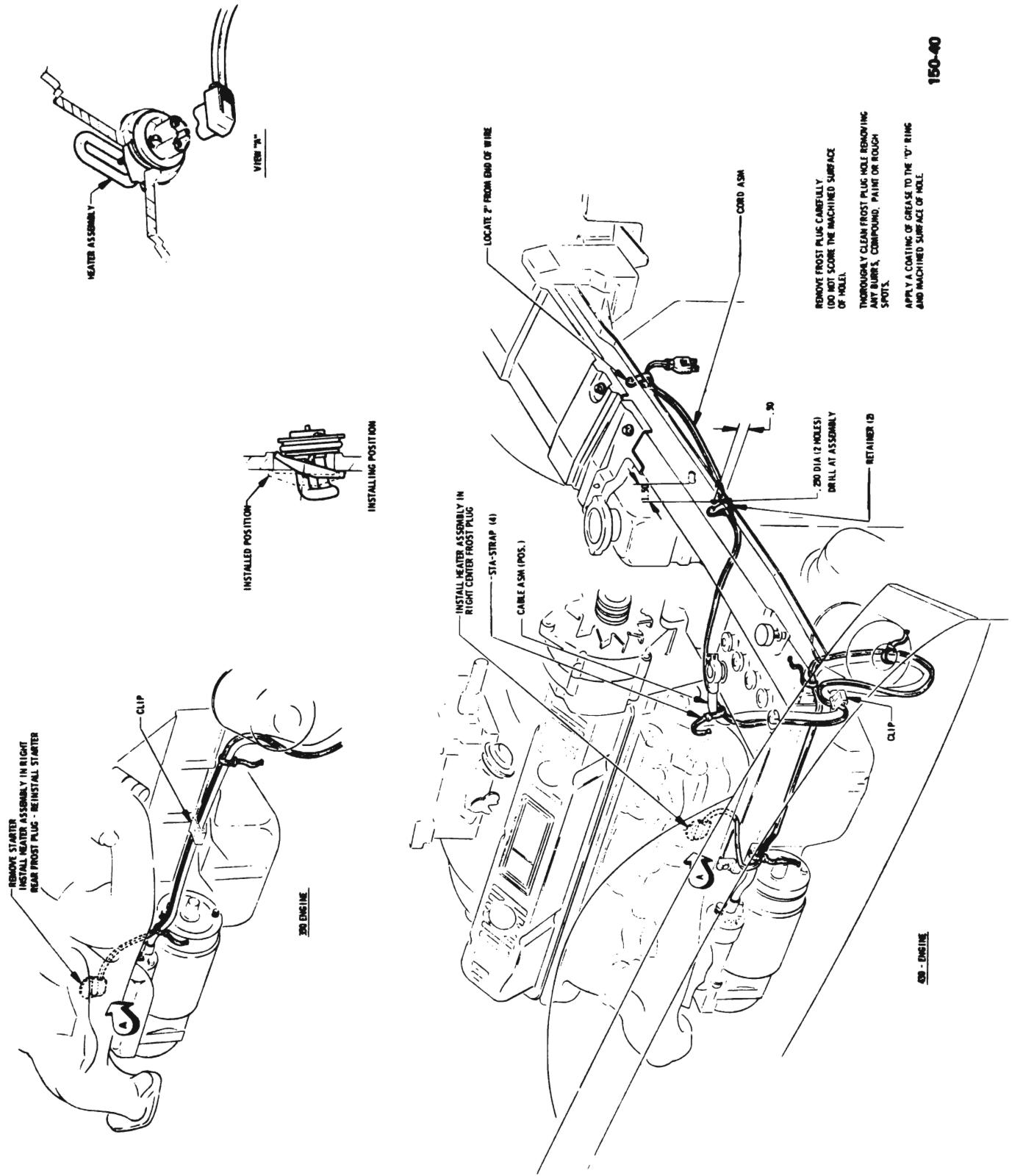


Fig. 150-10 45-46-48000 Series Engine Block Heater

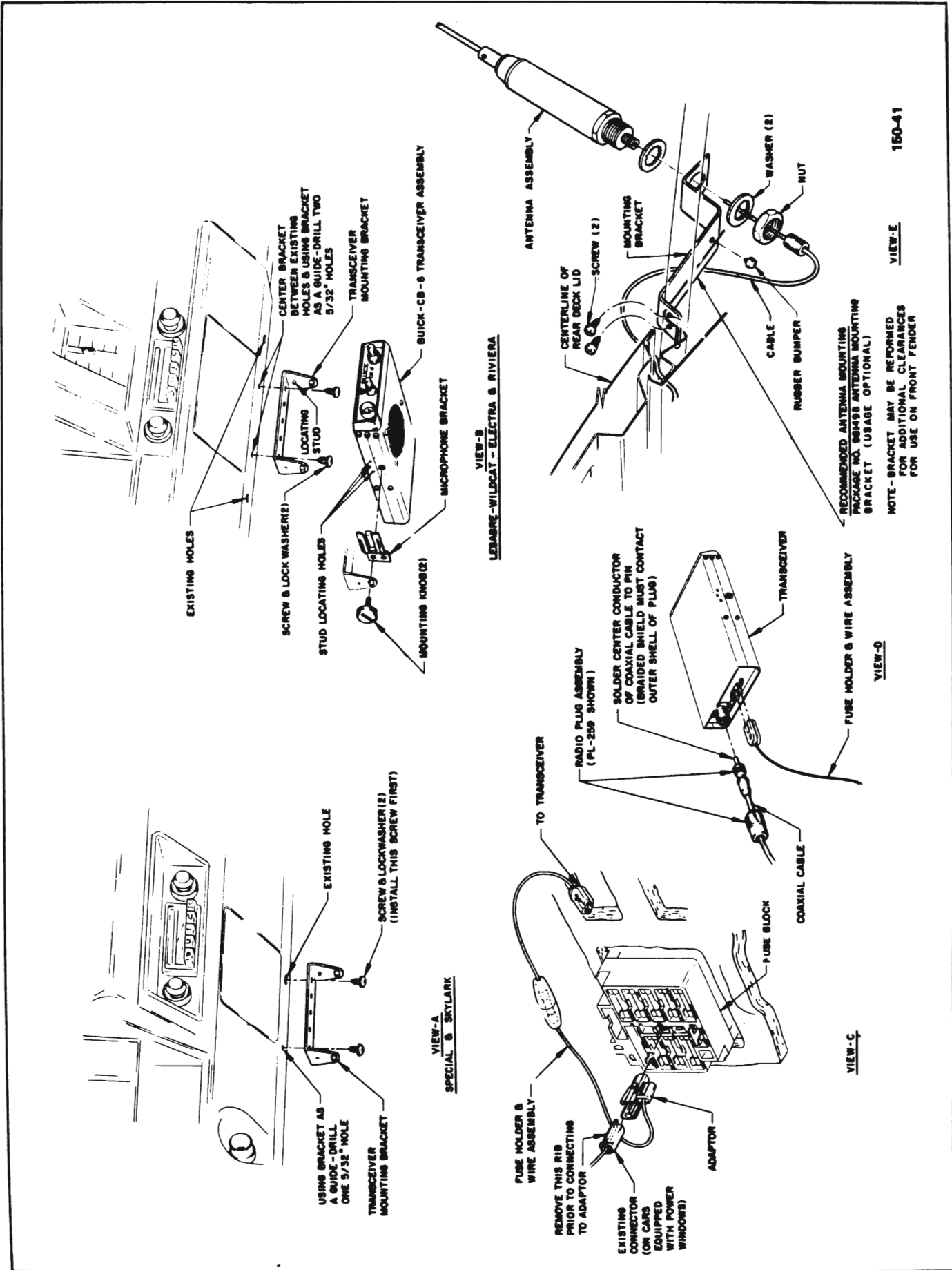


Fig. 150-II All Series Citizens Band Radio (I)

**INSTALLATION INSTRUCTIONS**

1. **IMPORTANT** DISCONNECT BATTERY GROUND CABLE PRIOR TO INSTALLATION. ASSEMBLE MOUNTING BRACKET TO ANTENNA & INSTALL BUMPER TO MOUNTING BRACKET. USE MOUNTING BRACKET AS TEMPLATE & DRILL 3/64 DIA. HOLES (2).
2. INSTALL MOUNTING BRACKET. (VIEW E)
3. ROUTE COAXIAL CABLE THRU HINGE BOX & INSTALL CLIP. (VIEW-F)
4. REMOVE REAR SEAT CUSHION & SEAT BACK.
5. REMOVE LEFT DOOR SILL PLATE & FOLD BACK CARPET.
6. ROUTE COAXIAL CABLE UNDER CARPET AS SHOWN. (VIEW-G)
- CAUTION** DO NOT COIL EXCESS CABLE UNTIL ROUTING IS COMPLETE.  
DO NOT CUT OR SHORTEN CABLE.
7. INSTALL RADIO PLUG ASSEMBLY TO END OF COAXIAL CABLE. (VIEW-D)
- CAUTION** CHECK COAXIAL CABLE FOR SHORTS OR GROUNDING OF CENTER LEAD TO SHIELD.
8. INSTALL TRANSCIVER MOUNTING BRACKET TO INSTRUMENT PANEL LOWER TIE BAR AS SHOWN. (VIEWS-A & B)
9. CONNECT FUSE HOLDER & WIRE ASSEMBLY. (VIEW-C)
10. MOUNT TRANSCIVER TO MOUNTING BRACKET. (VIEW-B)
11. CONNECT FUSE HOLDER & WIRE ASSEMBLY AND COAXIAL CABLE TO RADIO. (VIEW-D)
12. COIL EXCESS CABLE IN LUGGAGE COMPARTMENT & TAPE IN PLACE. (VIEW-G)
13. INSTALL MICROPHONE.
14. **A GOOD IDEA** READ INSTRUCTION MANUAL THOROUGHLY BEFORE BEGINNING INSTALLATION.

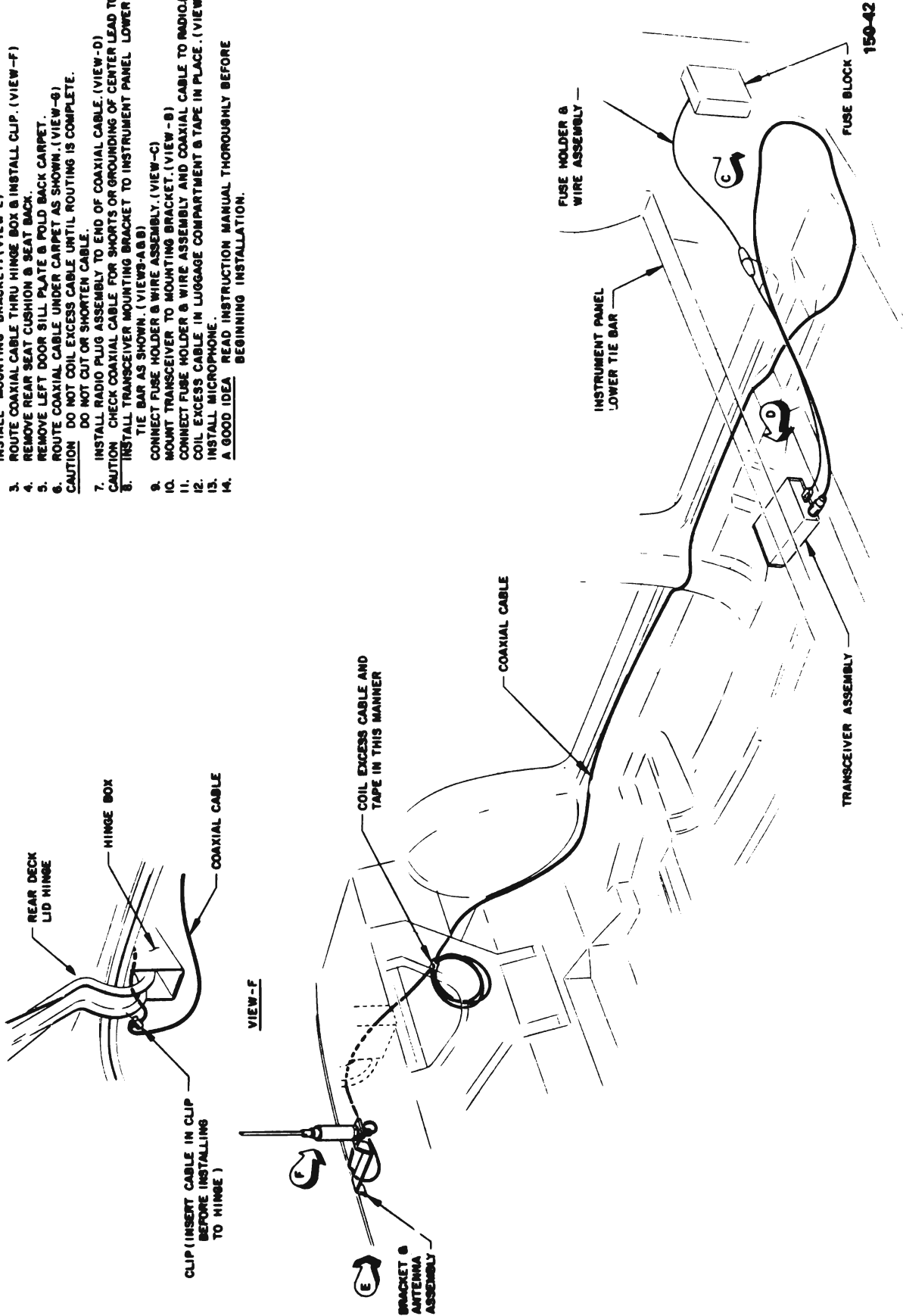


Fig. 150-12 All Series Citizens Band Radio (2)

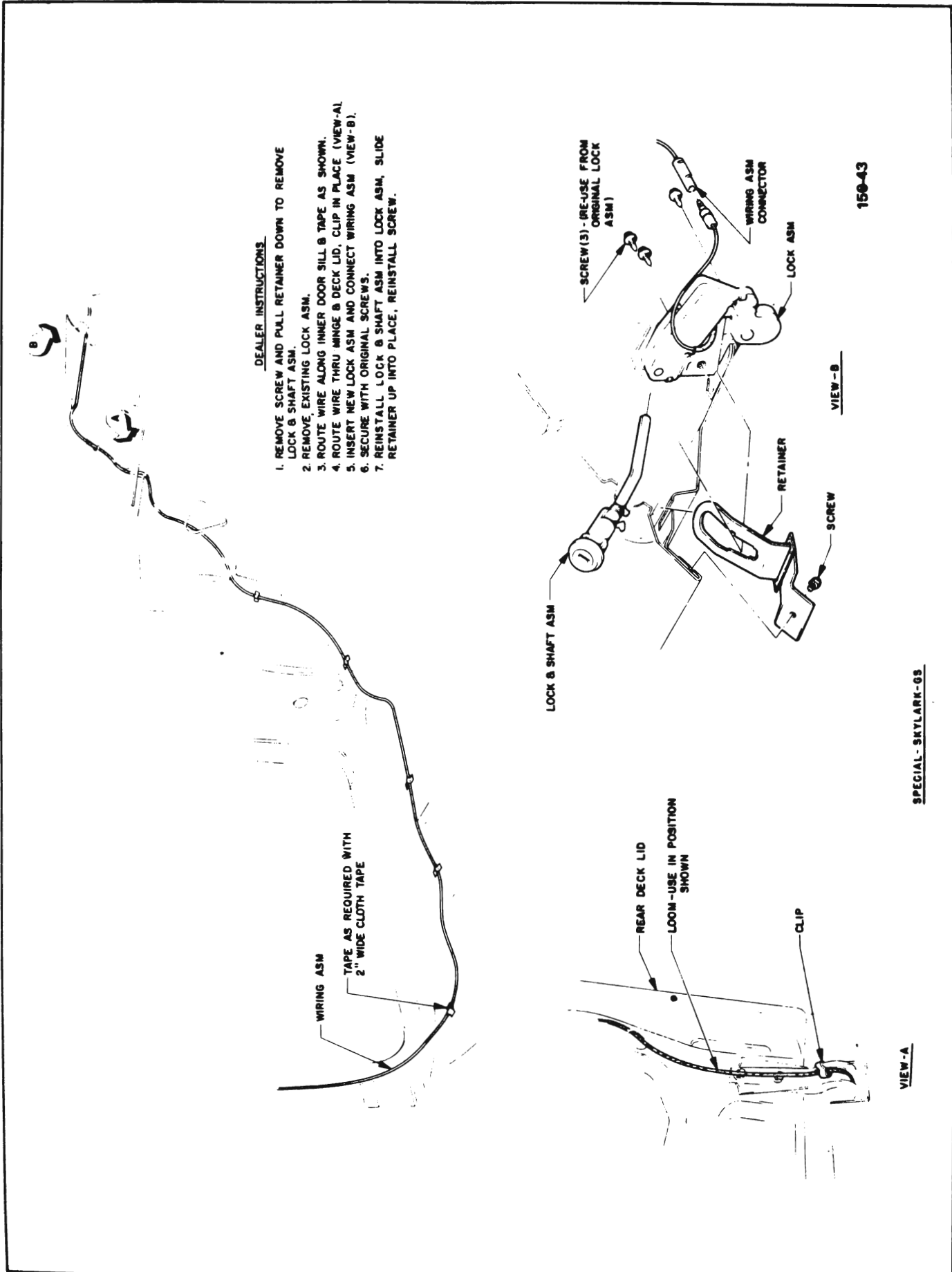


Fig. 150-13 43-44000 Series Electric Trunk Latch (I)

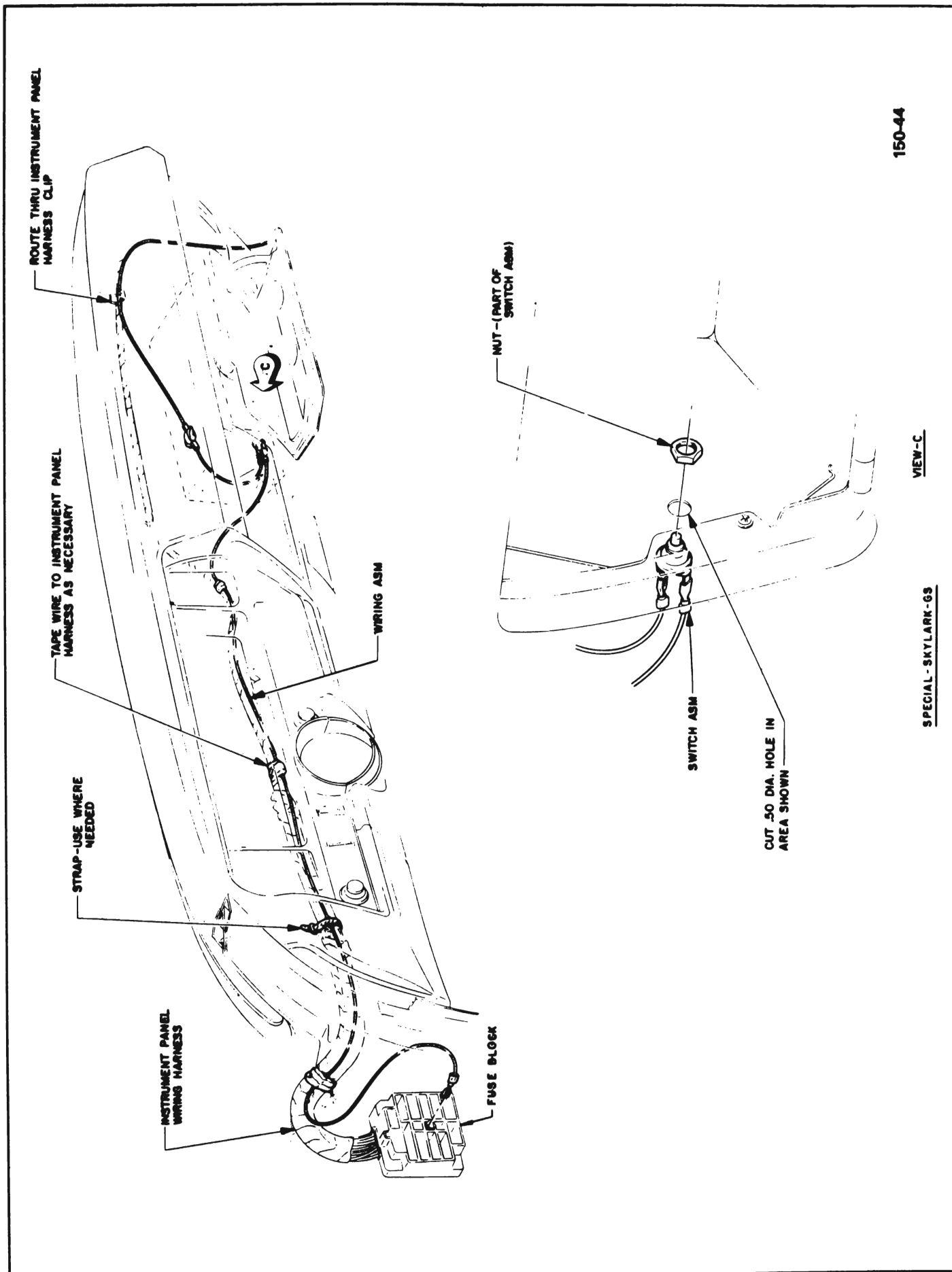
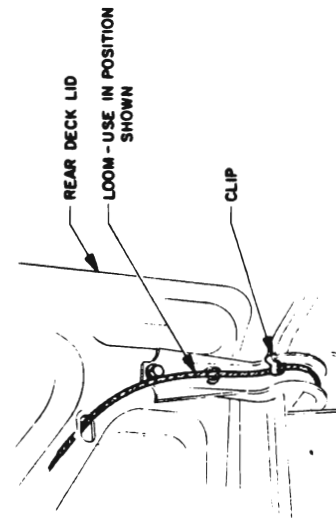
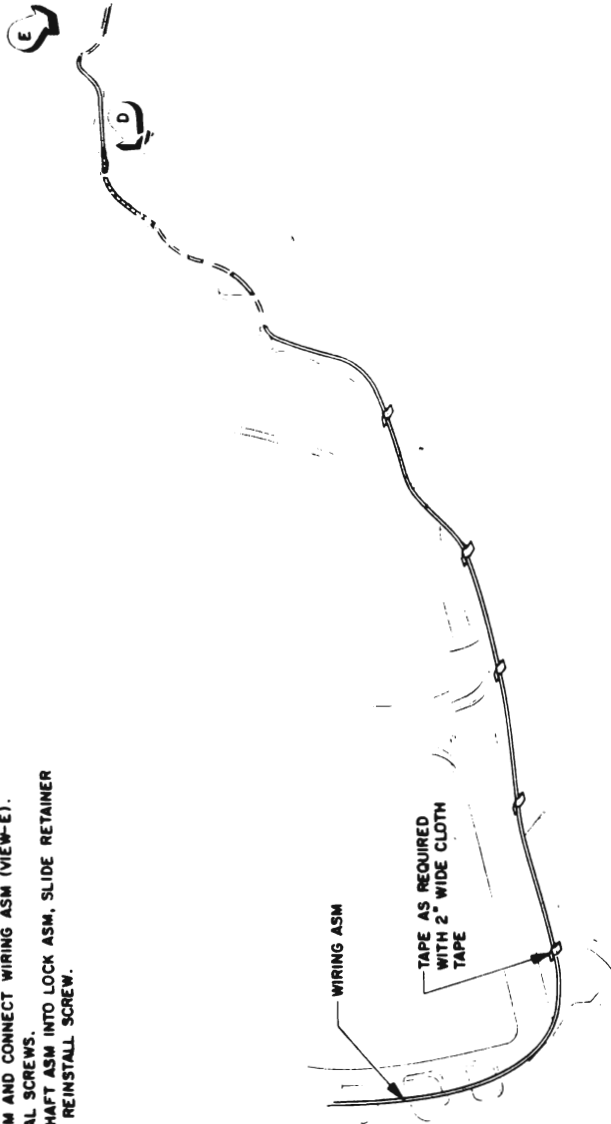


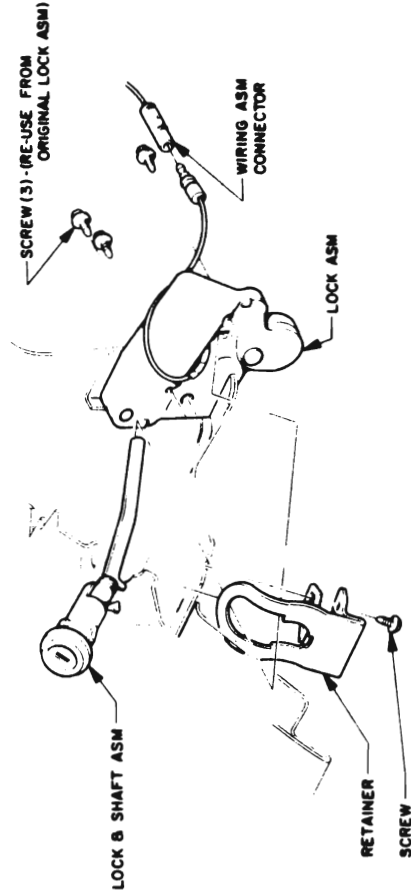
Fig. I50-14 43-44000 Series Electric Trunk Latch (2)

DEALER INSTRUCTIONS

1. REMOVE SCREW AND PULL RETAINER DOWN TO REMOVE LOCK & SHAFT ASM.
2. REMOVE EXISTING LOCK ASM.
3. ROUTE WIRE ALONG INNER DOOR SILL AND TAPE AS SHOWN.
4. ROUTE WIRE THRU HINGE AND DECK LID, CLIP IN PLACE (VIEW-D).
5. INSERT NEW LOCK ASM AND CONNECT WIRING ASM (VIEW-E).
6. SECURE WITH ORIGINAL SCREWS.
7. REINSTALL LOCK & SHAFT ASM INTO LOCK ASM, SLIDE RETAINER UP INTO PLACE AND REINSTALL SCREW.



VIEW-D

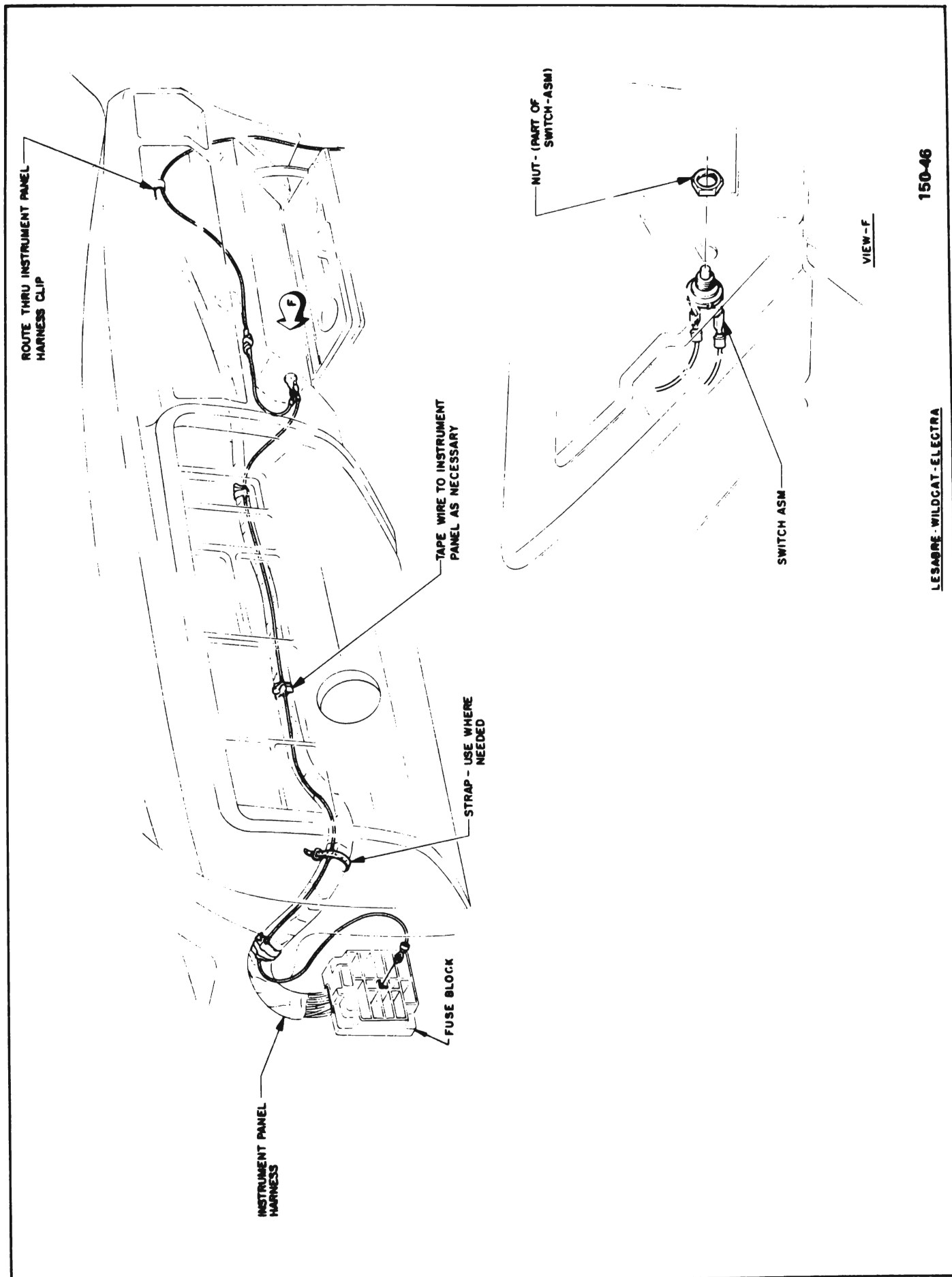


VIEW-E

150-45

LESABRE-WILDCAT-ELECTRA

Fig. 150-15 45-46-48000 Series  
Electric Trunk Latch (I)



150-46

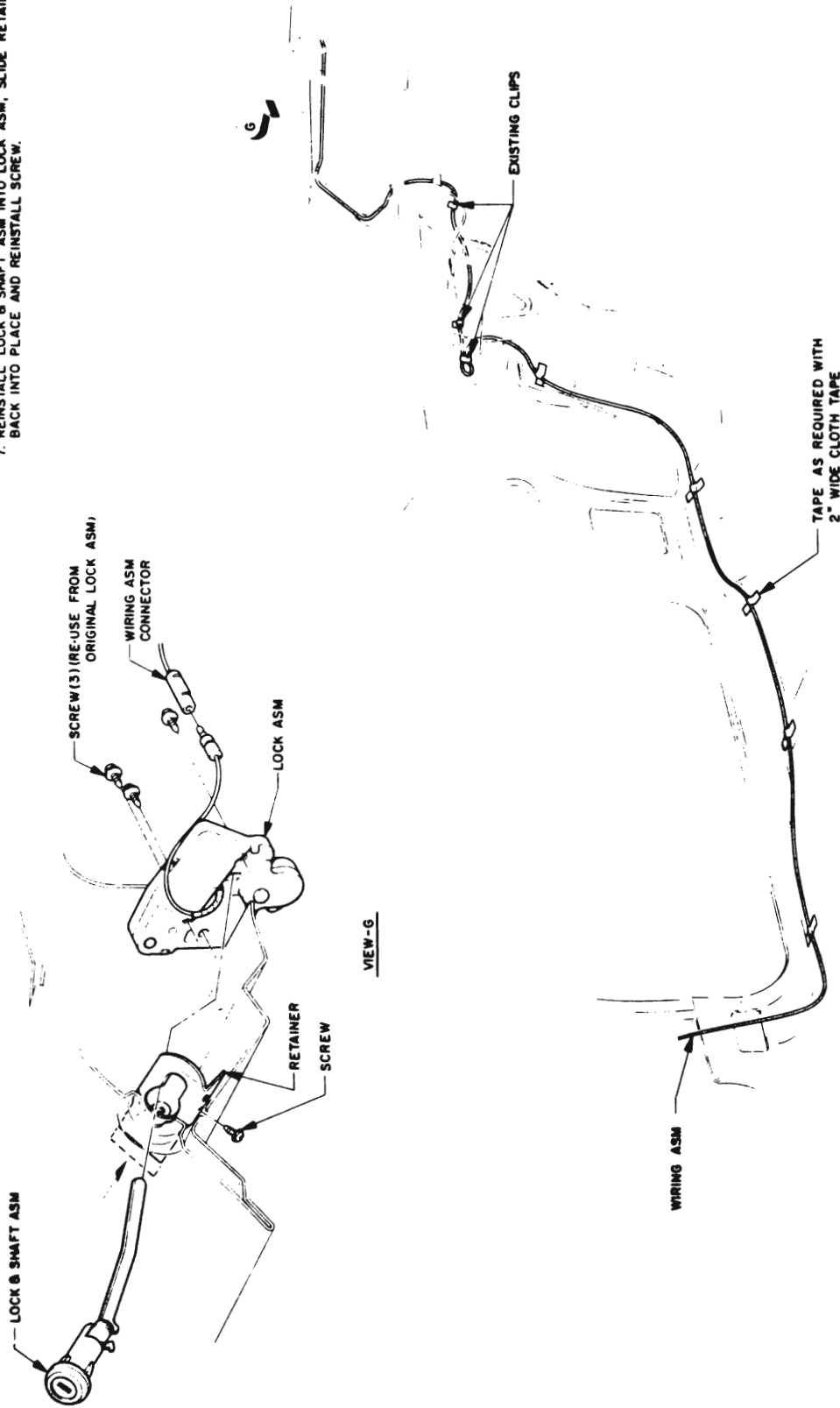
LESABRE - WILDCAT - ELECTRA

Fig. 150-16 45-46-48000 Series  
Electric Trunk Latch (2)



DEALER INSTRUCTIONS

1. REMOVE SCREW AND SLIDE RETAINER IN DIRECTION OF ARROW TO REMOVE LOCK & SHAFT ASM.
2. REMOVE EXISTING LOCK ASM.
3. ROUTE WIRE ALONG INNER DOOR SILL AND TAPE AS SHOWN.
4. ROUTE WIRE THRU EXISTING CLIPS AND DECK LID.
5. INSERT NEW LOCK ASM AND CONNECT WIRING ASM (VIEW-6).
6. SECURE WITH ORIGINAL SCREWS.
7. REINSTALL LOCK & SHAFT ASM INTO LOCK ASM, SLIDE RETAINER BACK INTO PLACE AND REINSTALL SCREW.



150-47

BILVERA

Fig. 150-17 49000 Series Electric Trunk Latch (I)

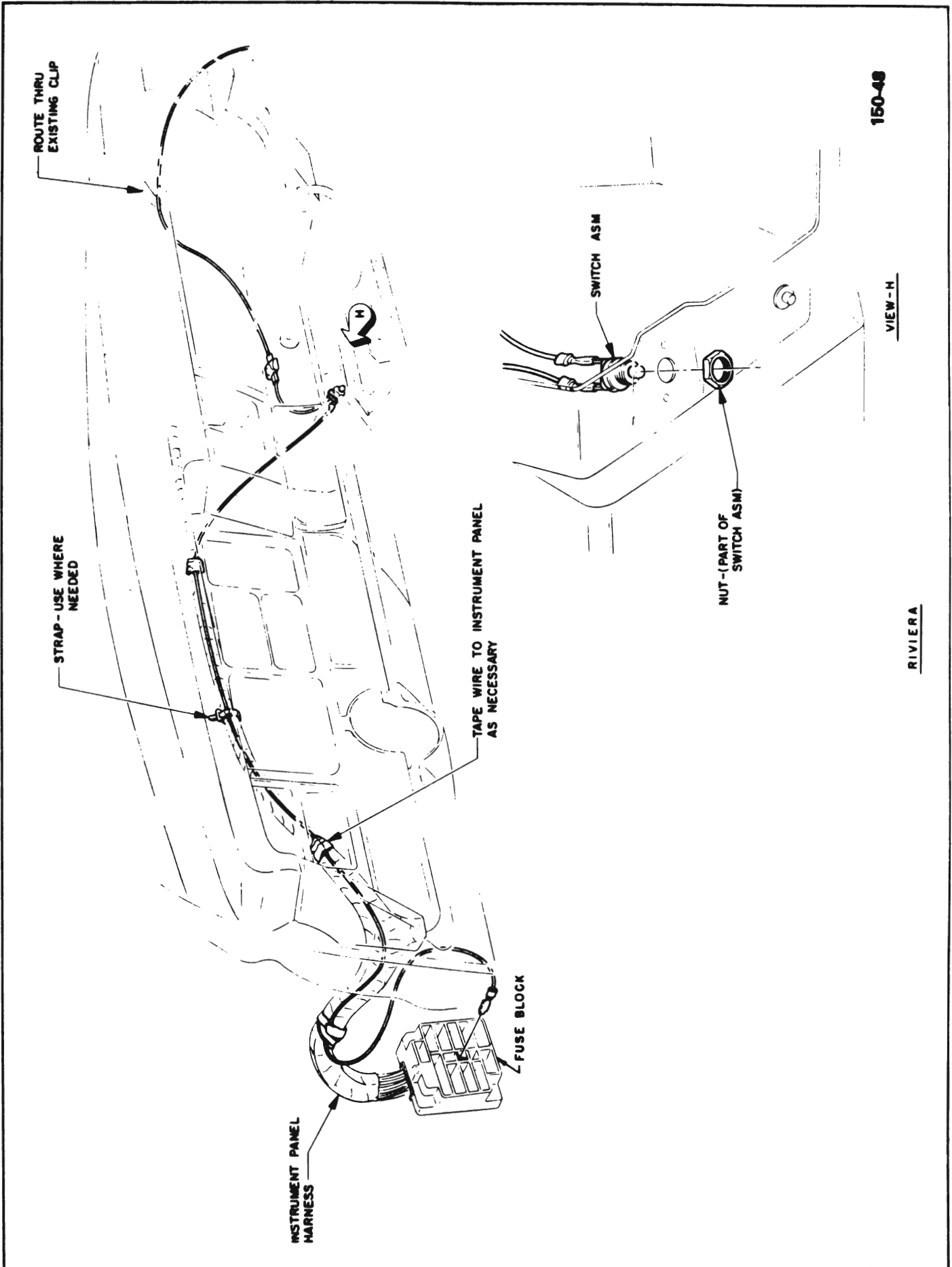


Fig. 150-18 49000 Series Electric Trunk Latch (2)

## DECIMAL EQUIVALENTS

$\frac{1}{64}$	.015625	$\frac{33}{64}$	.515625
$\frac{1}{32}$	.03125	$\frac{17}{32}$	.53125
$\frac{3}{64}$	.046875	$\frac{35}{64}$	.546875
$\frac{1}{16}$	.0625	$\frac{9}{16}$	.5625
$\frac{5}{64}$	.078125	$\frac{37}{64}$	.578125
$\frac{3}{32}$	.09375	$\frac{19}{32}$	.59375
$\frac{7}{64}$	.109375	$\frac{39}{64}$	.609375
$\frac{1}{8}$	.125	$\frac{5}{8}$	.625
$\frac{9}{64}$	.140625	$\frac{41}{64}$	.640625
$\frac{5}{32}$	.15625	$\frac{21}{32}$	.65625
$\frac{11}{64}$	.171875	$\frac{43}{64}$	.671875
$\frac{3}{16}$	.1875	$\frac{11}{16}$	.6875
$\frac{13}{64}$	.203125	$\frac{45}{64}$	.703125
$\frac{7}{32}$	.21875	$\frac{23}{32}$	.71875
$\frac{15}{64}$	.234375	$\frac{47}{64}$	.734375
$\frac{1}{4}$	.25	$\frac{3}{4}$	.75
$\frac{17}{64}$	.265625	$\frac{49}{64}$	.765625
$\frac{9}{32}$	.28125	$\frac{25}{32}$	.78125
$\frac{19}{64}$	.296875	$\frac{51}{64}$	.796875
$\frac{5}{16}$	.3125	$\frac{13}{16}$	.8125
$\frac{21}{64}$	.328125	$\frac{53}{64}$	.828125
$\frac{11}{32}$	.34375	$\frac{27}{32}$	.84375
$\frac{23}{64}$	.359375	$\frac{55}{64}$	.859375
$\frac{3}{8}$	.375	$\frac{7}{8}$	.875
$\frac{25}{64}$	.390625	$\frac{57}{64}$	.890625
$\frac{13}{32}$	.40625	$\frac{29}{32}$	.90625
$\frac{27}{64}$	.421875	$\frac{59}{64}$	.921875
$\frac{7}{16}$	.4375	$\frac{15}{16}$	.9375
$\frac{29}{64}$	.453125	$\frac{61}{64}$	.953125
$\frac{15}{32}$	.46875	$\frac{31}{32}$	.96875
$\frac{31}{64}$	.484375	$\frac{63}{64}$	.984375
$\frac{1}{2}$	.5	1	1.

# DECIMAL EQUIVALENTS AND TAP DRILL SIZES

DRILL SIZE	DECIMAL	TAP SIZE	DRILL SIZE	DECIMAL	TAP SIZE	DRILL SIZE	DECIMAL	TAP SIZE
1/64	.0156		17	.1730		Q	.3320	3/8-24
1/32	.0312		16	.1770	12-24	R	.3390	
60	.0400		15	.1800		11/32	.3437	
59	.0410		14	.1820	12-28	S	.3480	
58	.0420		13	.1850	12-32	T	.3580	
57	.0430		3/16	.1875		23/64	.3594	
56	.0465		12	.1890		U	.3680	7/16-14
3/64	.0469	0-80	11	.1910		3/8	.3750	
55	.0520		10	.1935		V	.3770	
54	.0550	1-56	9	.1960		W	.3860	
53	.0595	1-64, 72	8	.1990		25/64	.3906	7/16-20
1/16	.0625		7	.2010	1/4-20	X	.3970	
52	.0635		13/64	.2031		Y	.4040	
51	.0670		6	.2040		13/32	.4062	
50	.0700	2-56, 64	5	.2055		Z	.4130	
49	.0730		4	.2090		27/64	.4219	1/2-13
48	.0760		3	.2130	1/4-28	7/16	.4375	
5/64	.0781		7/32	.2187		29/64	.4531	1/2-20
47	.0785	3-48	2	.2210		15/32	.4687	
46	.0810		1	.2280		31/64	.4844	9/16-12
45	.0820	3-56,4-32	A	.2340		1/2	.5000	
44	.0860	4-36	15/64	.2344		33/64	.5156	9/16-18
43	.0890	4-40	B	.2380		17/32	.5312	5/8-11
42	.0935	4-48	C	.2420		35/64	.5469	
3/32	.0937		D	.2460		9/16	.5625	
41	.0960		E, 1/4	.2500		37/64	.5781	5/8-18
40	.0980		F	.2570	5/16-18	19/32	.5937	11/16-11
39	.0995		G	.2610		39/64	.6094	
38	.1015	5-40	17/64	.2656		5/8	.6250	11/16-16
37	.1040	5-44	H	.2660		41/64	.6406	
36	.1065	6-32	I	.2720	5/16-24	21/32	.6562	3/4-10
7/64	.1093		J	.2770		43/64	.6719	
35	.1100		K	.2810		11/16	.6875	3/4-16
34	.1110	6-36	9/32	.2812		45/64	.7031	
33	.1130	6-40	L	.2900		23/32	.7187	
32	.1160		M	.2950		47/64	.7344	
31	.1200		19/64	.2968		3/4	.7500	
1/8	.1250		N	.3020		49/64	.7656	7/8-9
30	.1285		5/16	.3125	3/8-16	25/32	.7812	
29	.1360	8-32, 36	O	.3160		51/64	.7969	
28	.1405	8-40	P	.3230		13/16	.8125	7/8-14
9/64	.1406		21/64	.3281		53/64	.8281	
27	.1440					27/32	.8437	
26	.1470					55/64	.8594	
25	.1495	10-24				7/8	.8750	1-8
24	.1520					57/64	.8906	
23	.1540					29/32	.9062	
5/32	.1562					59/64	.9219	
22	.1570	10-30				15/16	.9375	1-12,14
21	.1590	10-32				61/64	.9531	
20	.1610					31/32	.9687	
19	.1660					63/64	.9844	
18	.1695					1	1.000	
11/64	.1719							

THREAD	DRILL	THREAD	DRILL
1/8-27	R	1 1/2-11 1/2	1 47/64
1/4-18	7/16	2-11 1/2	2 7/32
3/8-18	37/64	2 1/2-8	2 5/8
1/2-14	23/32	3-8	3 1/4
3/4-14	59/64	3 1/2-8	3 3/4
1-11 1/2	1 5/32	4-8	4 1/4
1 1/4-11 1/2	1 1/2		