

SECTION A

FUEL TANK AND FUEL SYSTEM

CONTENTS

Division	Paragraph	Subject	Page
I		SPECIFICATIONS AND ADJUSTMENTS:	
II	80-1	DESCRIPTION AND OPERATION: Description of Fuel Tank and Fuel System	80-2
III	80-2	SERVICE PROCEDURES: Removal of Gas Tank or Gas Gauge Tank Unit	80-3

DIVISION II

DESCRIPTION AND OPERATION

80-1 DESCRIPTION OF FUEL TANK AND FUEL SYSTEM

In all models except station wagons, the fuel tank is attached under the trunk floor pan by two straps and is of the center fill design. The filler neck extends from the rear upper center of the tank to a point just forward of the rear bumper. See Figure 80-1. To fill the tank, pull down the spring-loaded license plate bracket and remove the filler cap.

All station wagons have the fuel tank mounted in the left rear quarter panel area. See Figures 80-2 and 3. To fill the tank, lift the spring-loaded filler door and remove the filler cap.

Filler necks are soldered into the tank in all series cars. See Figures 80-1 thru 5.

In all models except station wagons, the tank is vented during operation by a special breather, rather than at the filler cap. (A

“NO VENT” type filler cap is used.) This breather consists of two pipes extending from the upper right front corner of the tank; one pipe vents the left rear corner and the other pipe leads to the right front corner. Two rubber hoses are held in position vertically to prevent fuel loss from fuel sloshing. See Figures 80-1 and 4. With this arrangement of vents, the uppermost part of the tank is always vented, whether the car is sideways to a slope or straight with the slope. This prevents fuel loss due to expansion of trapped air.

In Rivieras, this breather is an inverted U-shaped pipe extending upward from the right front corner of the tank and is fastened to the body. See Figure 80-5. In Rivieras, this pipe provides the only venting both during operation and during filling.

In all models except Rivieras and station wagons, the tank is vented during filling by a baffle which extends from the lower end nearly to the upper end in the upper inside of the filler.

In station wagons, the tank is

vented only at the filler cap. See Figures 80-2 & 3.

The tank outlet consists of a combination fuel pick-up, filter and fuel gage tank unit. The tank unit can be removed by removing a cam ring which retains the unit.

The fuel line is terne coated welded steel tubing. Connections from the tank unit to the line and from the line to the fuel pump are made with synthetic rubber hose attached with spring clamps.

All engines have a replaceable pleated paper filter located in the carburetor inlet.

All air conditioner cars (except L-6 engine cars) have a vapor return system. These cars have a special fuel pump which has a metering outlet. Any vapor which forms is bled off and returned to the fuel tank, along with continuously circulating fuel, through a separate line. This system keeps cool fuel recirculating to the pump, thereby greatly reducing any possibility of vapor lock. All 400 and 430 engine cars have the vapor return system, regardless of whether or not they are equipped with an air conditioner.

DIVISION III

SERVICE PROCEDURES

80-2. REMOVAL OF FUEL TANK OR FUEL GAUGE TANK UNIT

The fuel gage tank unit is combined with the pick-up pipe and the tank filter. All series require lowering the fuel tank to replace the tank unit.

To lower a fuel tank, proceed as follows:

1. Syphon all fuel from tank into a clean container.
2. Disconnect fuel hose and vapor return hose from gage tank unit.
3. Remove ground (black) wire screw.
4. Unplug tan wire from gage unit.
5. Disconnect vent hoses.
6. Disconnect support straps and lower tank.
7. To install a fuel tank, reverse above procedure.

To remove a fuel gage tank unit, proceed as follows:

1. Unscrew cam ring using Wrench J-21518 for Specials, Skylarks or Rivas; use Wrench J-22554 for LeSabres, Wildcats or Electras.
2. Remove fuel gage tank unit.
3. Make sure "O" ring seal is in place. Install new tank unit, being careful not to bend or damage it.
4. Finish gage unit installation by reversing above steps. Make sure tan wire and black wire connections are clean and tight.

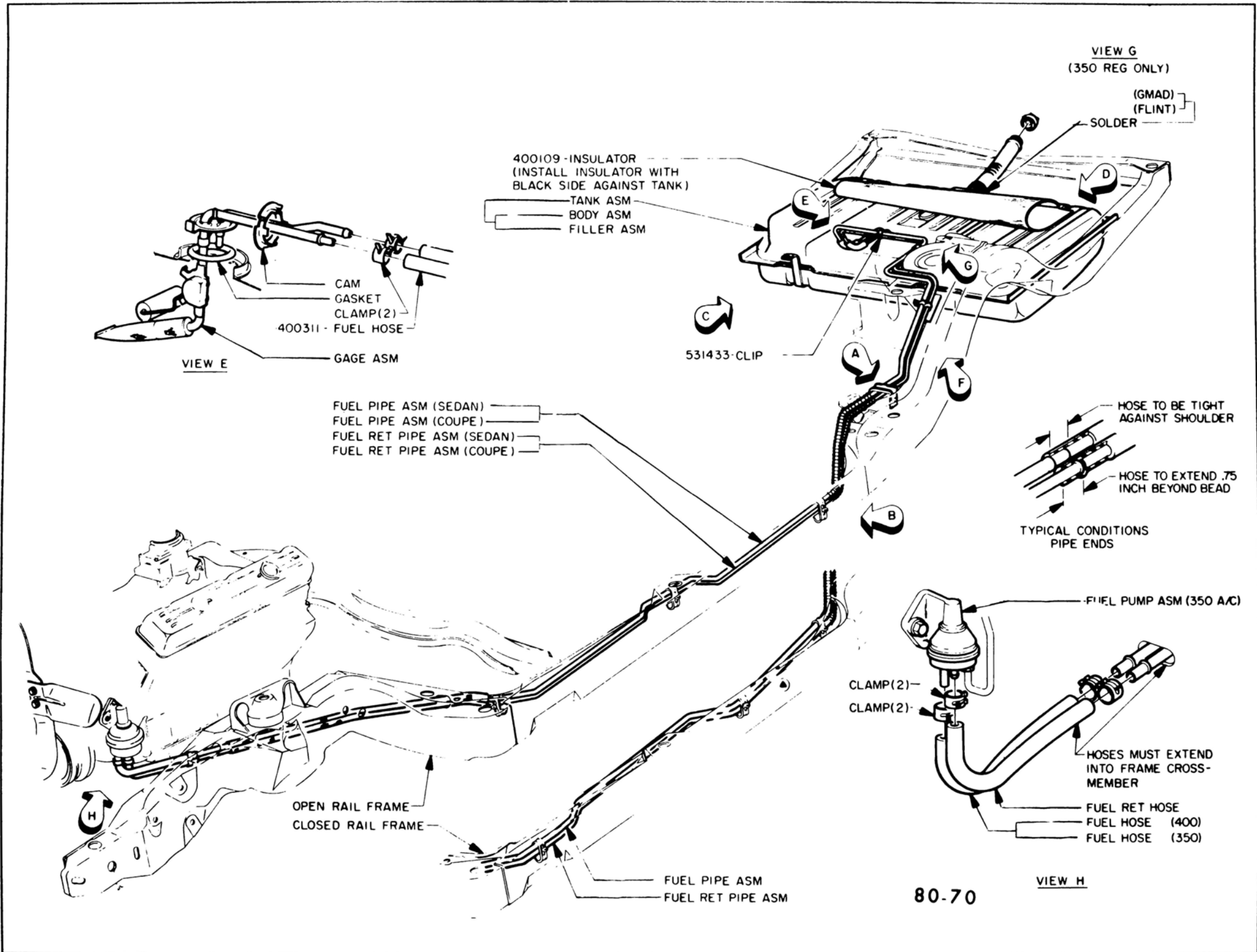


Figure 80-1—Fuel System - Special and Skylark Except Wagons

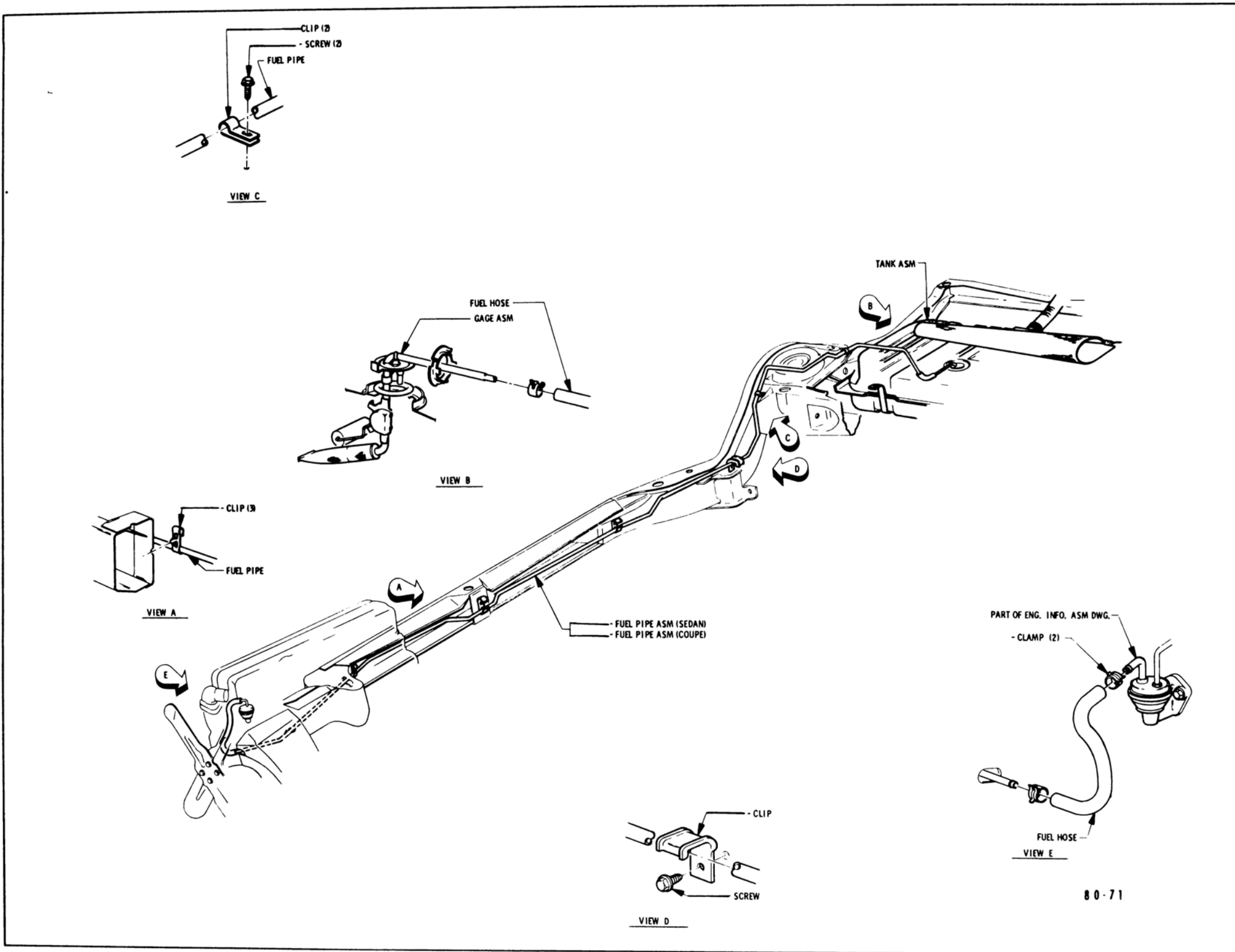


Figure 80-2-L-6 Fuel System

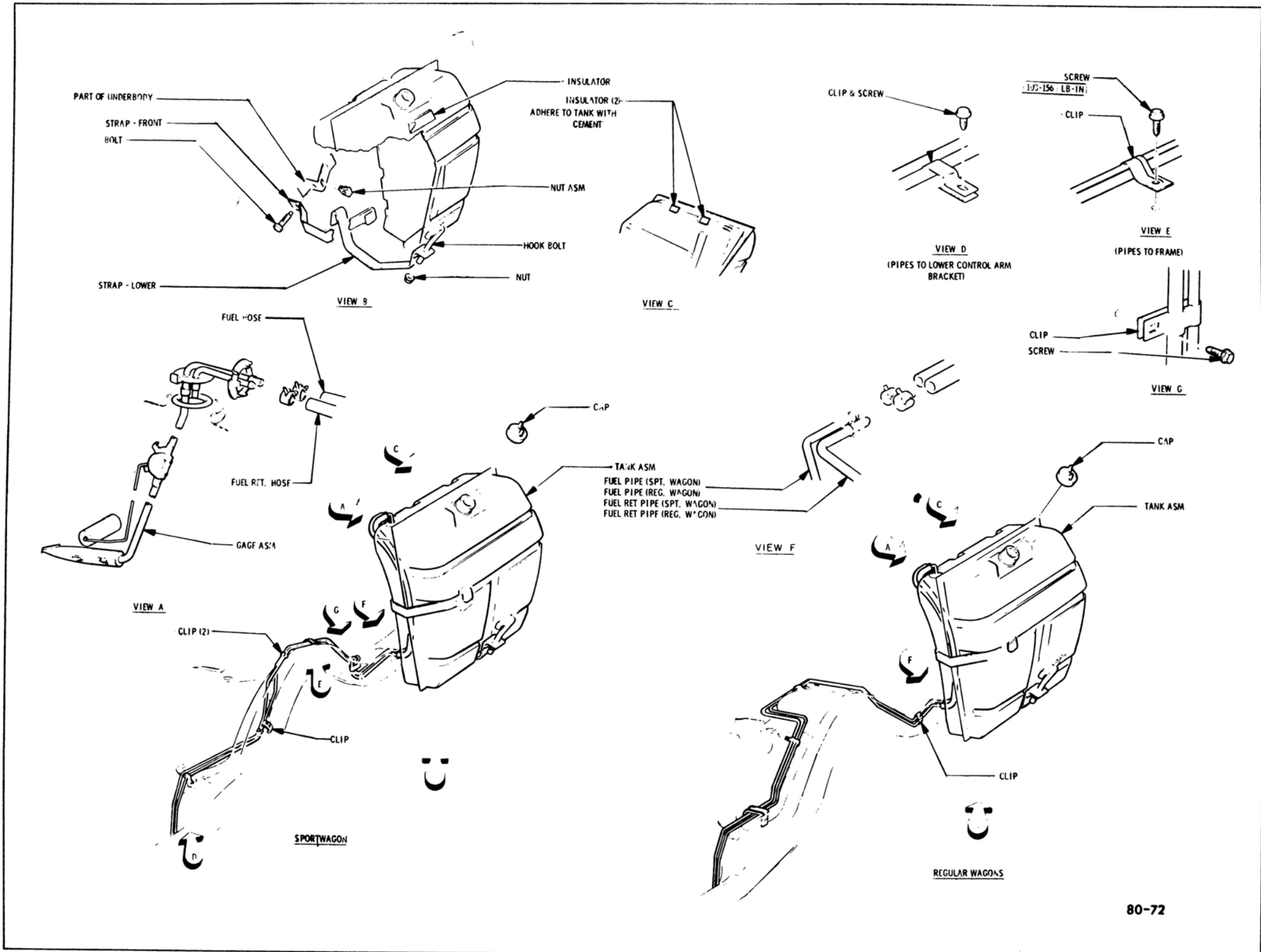
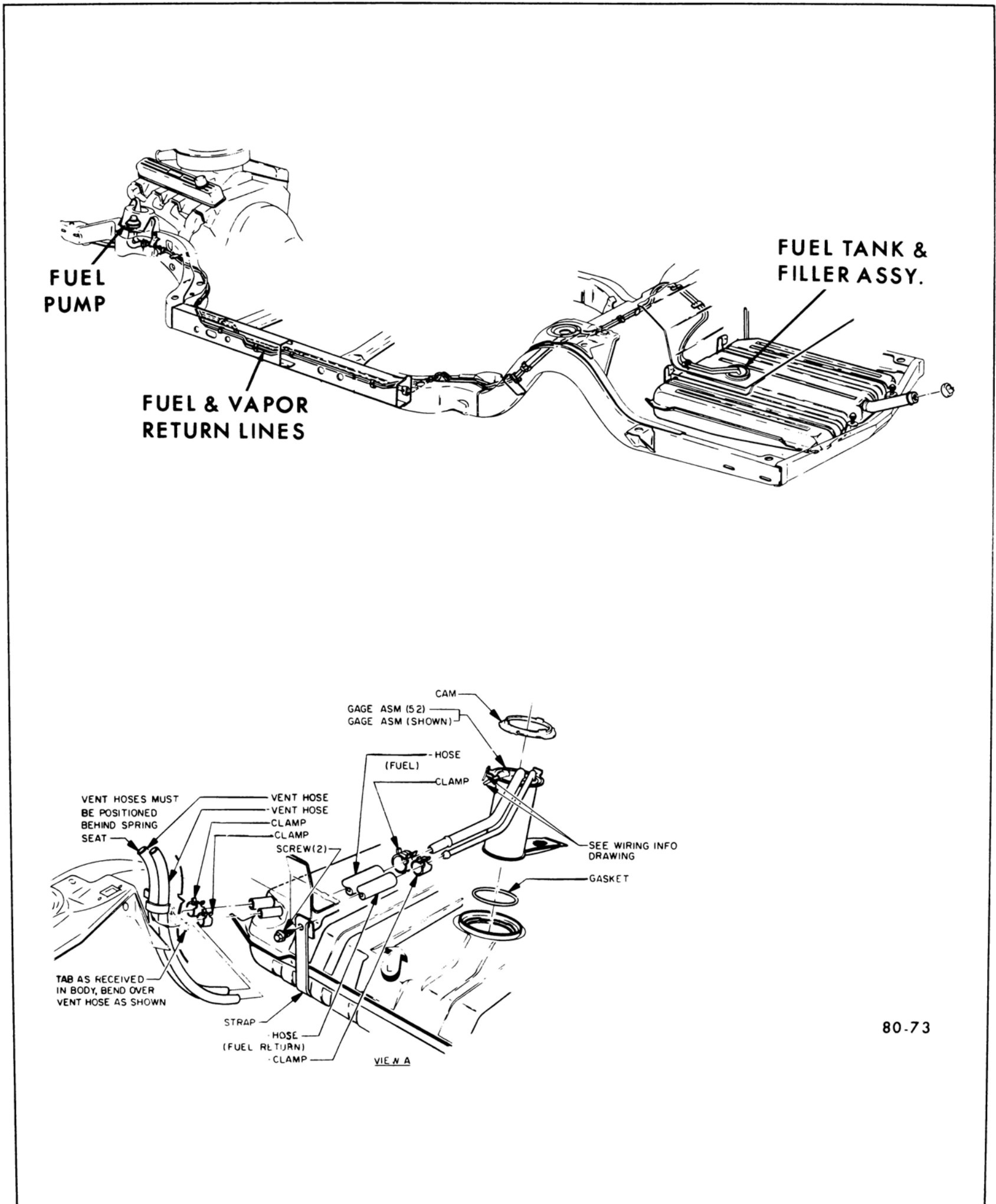


Figure 80-3—Fuel Tank - All Wagons



80-73

Figure 80-4—Fuel System - LeSabre, Wildcat and Electra

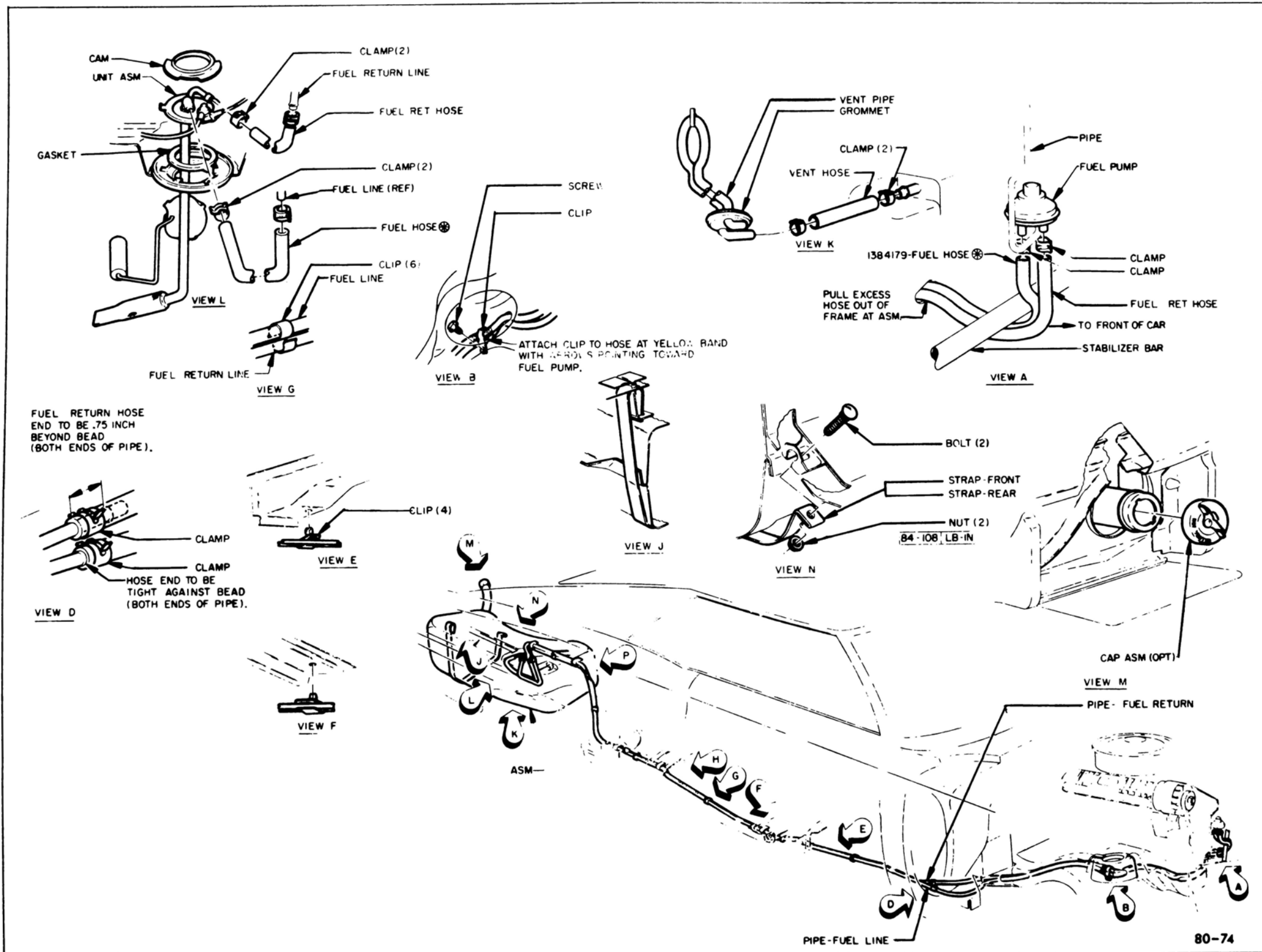


Figure 80-5—Fuel System - Riviera