

# SECTION B

## 45-46-48000 FRAME AND BODY MOUNTINGS

### CONTENTS

Division	Paragraph	Subject	Page
I		SPECIFICATIONS AND ADJUSTMENTS:	
	20-5	Body Mount Specifications and Adjustments . . . . .	20-10
II		DESCRIPTION AND OPERATION:	
	20-6	Description of Body Mounts . . . . .	20-10
III		SERVICE PROCEDURES:	
	20-7	Removal and Installation of Body Mounts . . . . .	20-10
IV		TROUBLE DIAGNOSIS:	
	20-8	Trouble Diagnosis . . . . .	20-11

### DIVISION I SPECIFICATIONS AND ADJUSTMENTS

#### 20-5 BODY MOUNT SPECIFICATION AND ADJUSTMENT

The 1967 body mount material should not be inter-mixed with previous model parts.

See diagrams for correct installation and torque specifications.

### DIVISION II DESCRIPTION AND OPERATION

#### 20-6 DESCRIPTION OF BODY MOUNTS

The body of the car is mounted to the chassis by means of thick rubber mounts. These mounts are specifically designed for each location to give the maximum amount of structure rigidity while at the same time providing optimum road noise isolation. Two basically different mounts are

used for this purpose. At those locations where a bolt is used, the mounting consists of a load carrying mount which rests on top of the frame side rails or mounting brackets, a metal tube spacer which limits the amount of compression of the mount and an insulator which fits on the bottom side of the frame side rail surface. All bolt-in body mounts have a specified bolting torque.

The second type of body mount used is of a plug-in design and has no mounting bolt. This mount plugs into a mounting hole on top of the frame side rail or rear spring seat and acts as a steady rest for the body.

### DIVISION III SERVICE PROCEDURES

#### 20-7 REMOVAL AND INSTALLATION OF BODY MOUNTS

The removal of any one body

mount necessitates the loosening of adjacent body mountings to permit the frame to be separated from the body.

During installation of a body mount, caution should be used to insure that the body mount is properly seated in the frame mounting hole, otherwise a direct metal to metal short circuit will result between the frame and body. The tube spacer should be in all bolt-in body mounts and the insulator and metal washer positioned to prevent the washer from contacting the frame side rail. Do not use lubricants of any kind on the rubber parts of the mounts. Proper clamping by the mount depends on clean and dry surfaces. Do not over-torque the body mount or a collapsed tube spacer or stripped bolt will result. Lubricating the bolt threads will result in a higher clamping

force for the same torque setting. If the body mount bolt does not screw in smoothly, it may be necessary to run a tap through the cage nut in the body to remove foreign material. If caution is not observed, broken body mount bolts may result.

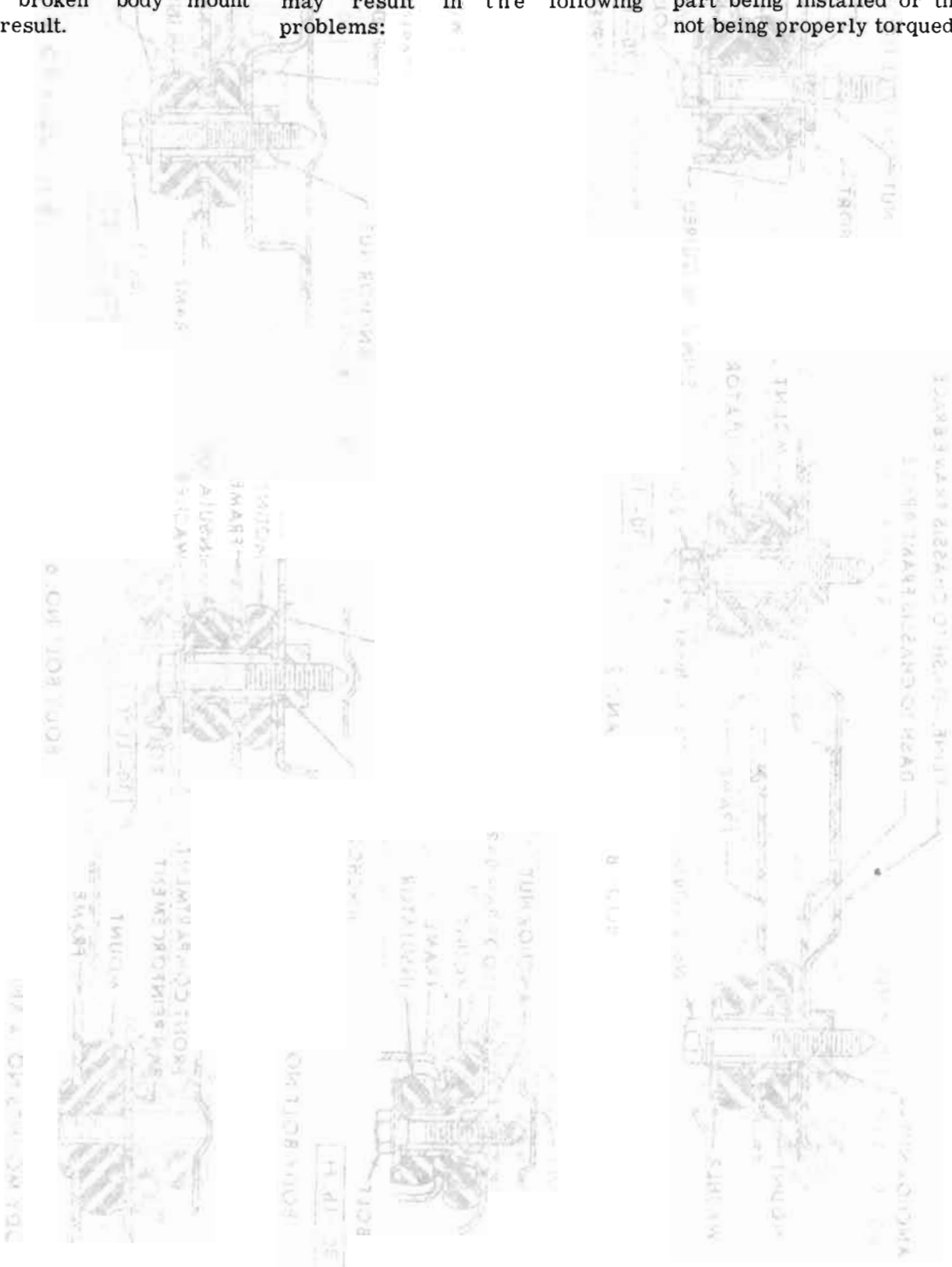
### DIVISION IV TROUBLE DIAGNOSIS

#### 20-8 TROUBLE DIAGNOSIS

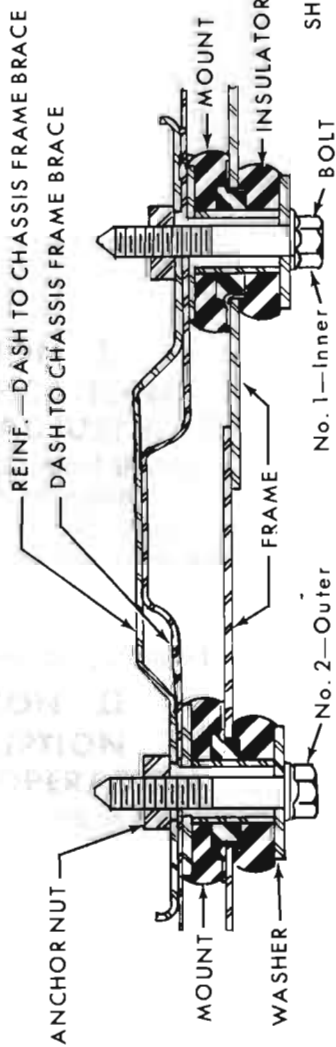
Improper body mount installations may result in the following problems:

1. Structure shake
2. Road noise
3. Squeaks

The above problems can sometimes be caused by the wrong part being installed or the mount not being properly torqued.

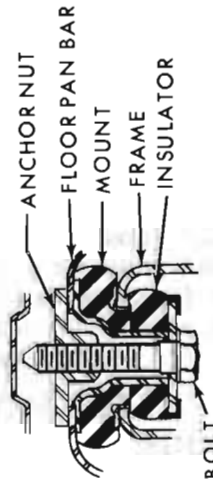


1. 106 20-8 12500 454648000



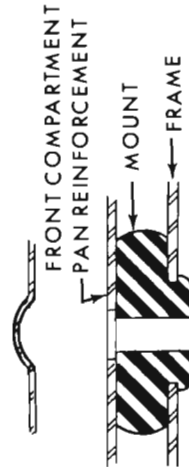
30—Lb. Ft.

BODY BOLT NO. 1 AND 2

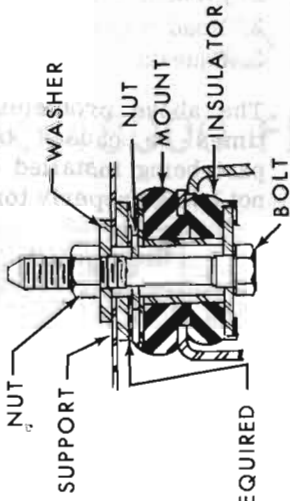


30—Lb. Ft.

BODY BOLT NO. 3



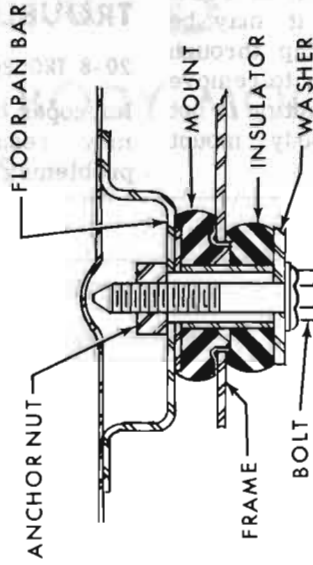
BODY MOUNTS NO. 4 AND 5



30—Lb. Ft.

(Permissible to reverse direction)

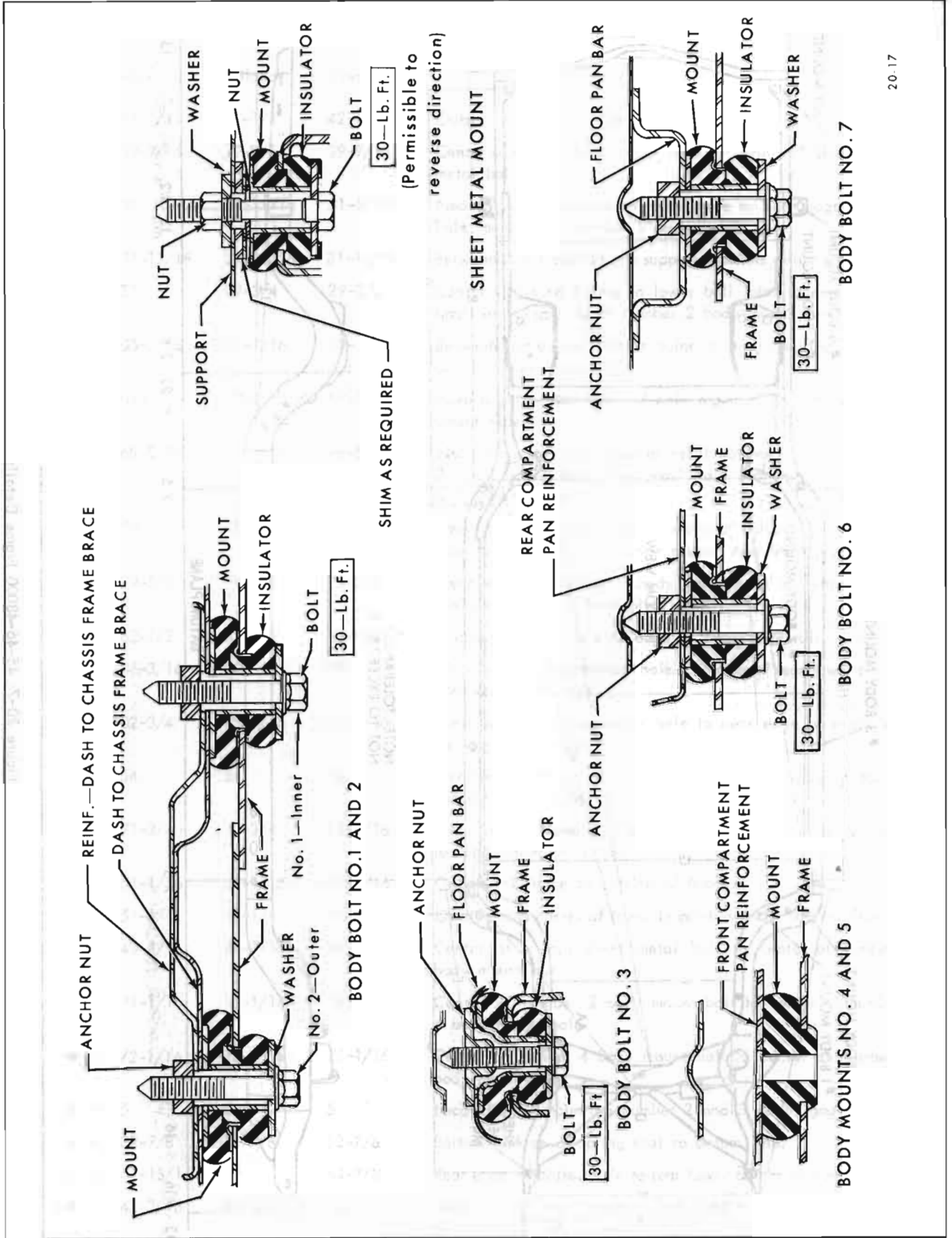
SHEET METAL MOUNT



30—Lb. Ft.

BODY BOLT NO. 7

20-16



20-17

Figure 20-6 46-48000 Body Mounts

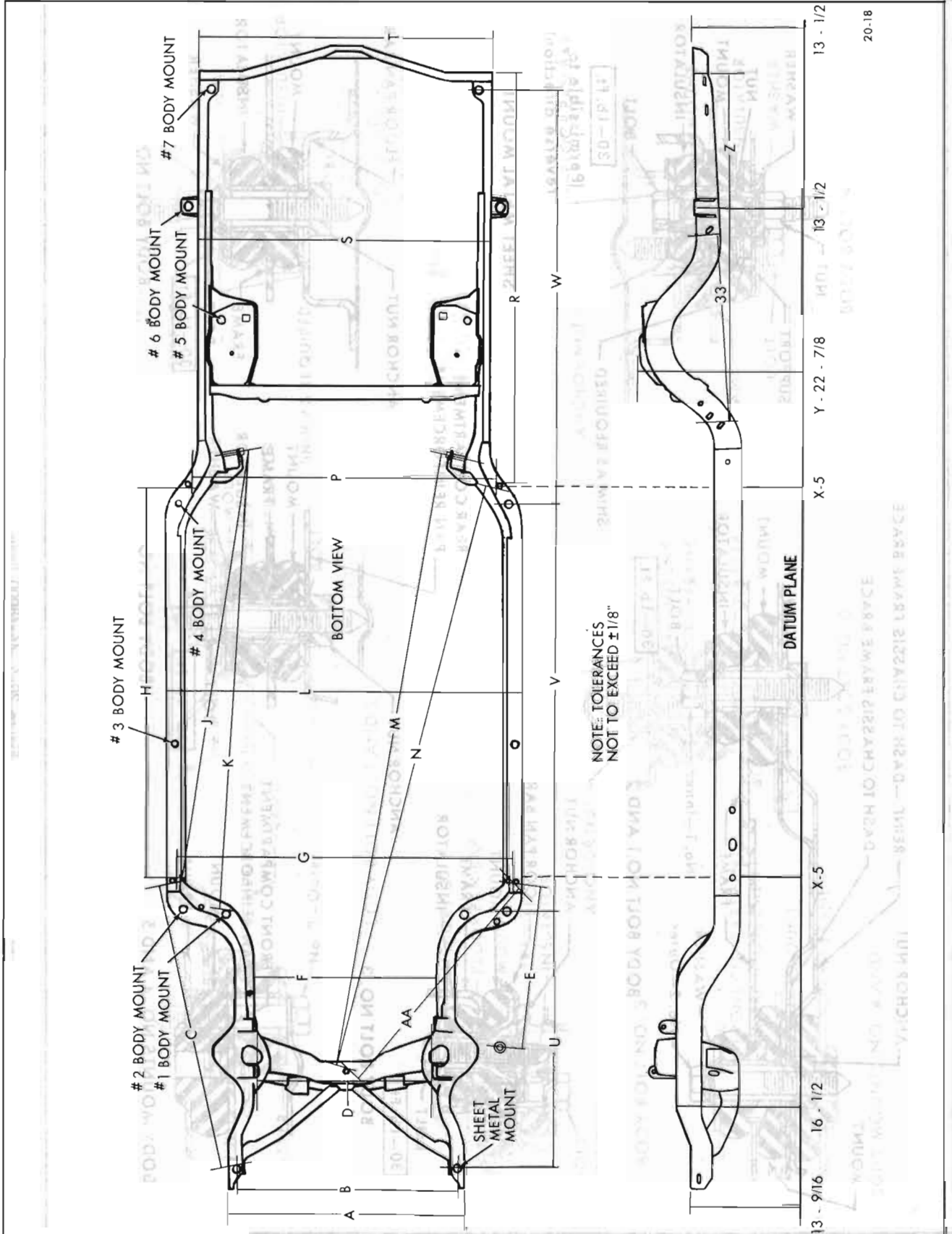


Figure 20-7 45-46-48000 Frame Details

	LeSabre	Wildcat	Electra	
A	42-1/4	42-1/4	42-1/4	Outside edge to outside edge of frame.
B	39-9/16	39-9/16	39-9/16	Center of chassis sheet metal hole to center of chassis sheet metal hole.
C	49	51-11/16	51-11/16	Near edge of chassis sheet metal hole to near edge of small hole rearward of number 2 body mount hole.
D	31-13/16	31-13/16	31-13/16	Between upper control arm support brackets (inner surface).
E	27	29-3/4	29-3/4	Center of grease fitting in lower ball joint to near edge of small hole rearward of number 2 body mount hole.
F	33-1/16	33-1/16	33-1/16	Between frame side rails at point of front steering gear bolt and idler arm mounting.
G	59-7/16	59-7/16	59-7/16	Near edge to near edge of hole rearward of number 2 body mount hole.
H	68-5/16	68-5/16	68-5/16	Near edge to near edge of small hole rearward of number 2 body mount hole and small hole rearward of number 4 body mount hole.
J	75	75	75	Near edge of small hole rearward of number 2 body mount hole to center of rear lower control arm front pivot bolt.
K	79-5/8	79-5/8	79-5/8	Near edge of number 1 body mount hole to center of rear lower control arm front pivot bolt.
L	62-1/2	62-1/2	62-1/2	Outside edge to outside edge of frame side rail.
M	106-3/16	109	109	Near edge of crossmember hole to center of rear lower control arm front pivot bolt.
N	102-3/4	105-7/16	105-7/16	Near edge of crossmember hole to near edge of small hole rearward of number 4 body mount hole.
P	54	54	54	Near edge of hole to near edge of hole rearward of number 4 body mount hole.
R	71-3/4	71-3/4	74-9/16	Near edge of small hole rearward of number 4 body mount to rear corner of frame.
S	51-1/16	51-1/16	51-1/16	Outside of frame to outside of frame.
T	51-1/4	51-1/4	51-1/4	Outside rear corner of frame to outside rear corner of frame.
U	43-7/16	46-7/16	46-7/16	Center of chassis sheet metal bolt to center of number 2 body mount bolt.
V	71-1/16	71-1/16	71-1/16	Center of number 2 body mount bolt to center of number 4 body mount bolt.
W	72-1/16	72-1/16	75-1/16	Center of number 4 body mount bolt to center of number 7 body mount bolt.
X	5	5	5	Locations for mounting number 2 and 3 datum gages.
Y	22-7/8	22-7/8	22-7/8	Bottom surface of spring seat to datum line.
Z	61-15/16	62	64-7/8	Rear edge of slotted hole to rear lower corner of frame.
AA	42-3/16	44-3/16	44-3/16	Near edge of crossmember hole to near edge of hole rearward of number 2 body mount.