

SECTION C

MAST JACKET ASSEMBLIES (EXCEPT TILT WHEEL MAST JACKET ASSEMBLIES) ALL SERIES

CONTENTS

Division	Paragraph	Subject	Page
I		SPECIFICATIONS AND ADJUSTMENTS: Not Applicable	
II		DESCRIPTION AND OPERATION: Not Applicable	
III		SERVICE PROCEDURES:	
	90-19	Removal and Installation of Steering Mast Jacket Assembly	90-48
	90-20	Disassembly and Reassembly of Automatic Transmission Mast Jacket and Transmission Control Shaft Assembly	90-50
	90-21	Disassembly and Reassembly of Three Speed Manual Transmission Mast Jacket and Transmission Control Shaft Assembly	90-57
	90-22	Disassembly and Reassembly of Four Speed Manual Transmission Mast Jacket	90-57
IV		TROUBLE DIAGNOSIS: Not Applicable	

DIVISION III

SERVICE PROCEDURES

90-19 REMOVAL AND INSTALLATION OF STEERING MAST JACKET ASSEMBLY

a. Removal

1. On 43-44000 series remove two nuts securing shaft lower coupling to lower steering shaft flange. See Figures 90-11 and 90-31. On 45-45-48-49000 series remove pinch bolt.

2. On column shift equipped cars remove clip from shift rod(s) and

pull rod(s) out of mast jacket shift lever(s).

3. On three speed manual transmission equipped cars remove clip securing clutch, release rod to clutch pedal, and disengage rod.

4. On 43-44000 series remove screws that retain trim cover to toe pan. See Figure 90-73.

5. Remove screws that retain toe pan cover to toe pan.

6. Disconnect wiring harness from mast jacket.

7. Remove shift indicator link from lever. See Figure 90-74.

8. Remove nut that retains mast jacket clamp to instrument panel.

On 45-46-48-49000 series remove lower cover.

9. Align shift lever(s) with hole in toe pan and remove jacket assembly.

b. Installation

1. Align shift lever(s) with hole in toe pan and install end of mast jacket through hole. Position lower steering shaft flange onto gear coupling flange and loosely attach jacket to instrument panel.

NOTE: When installing 43000-44000 and Gran Sport mast jacket be sure to align tab on bracket with slot in mast jacket (see Figure 90-73).

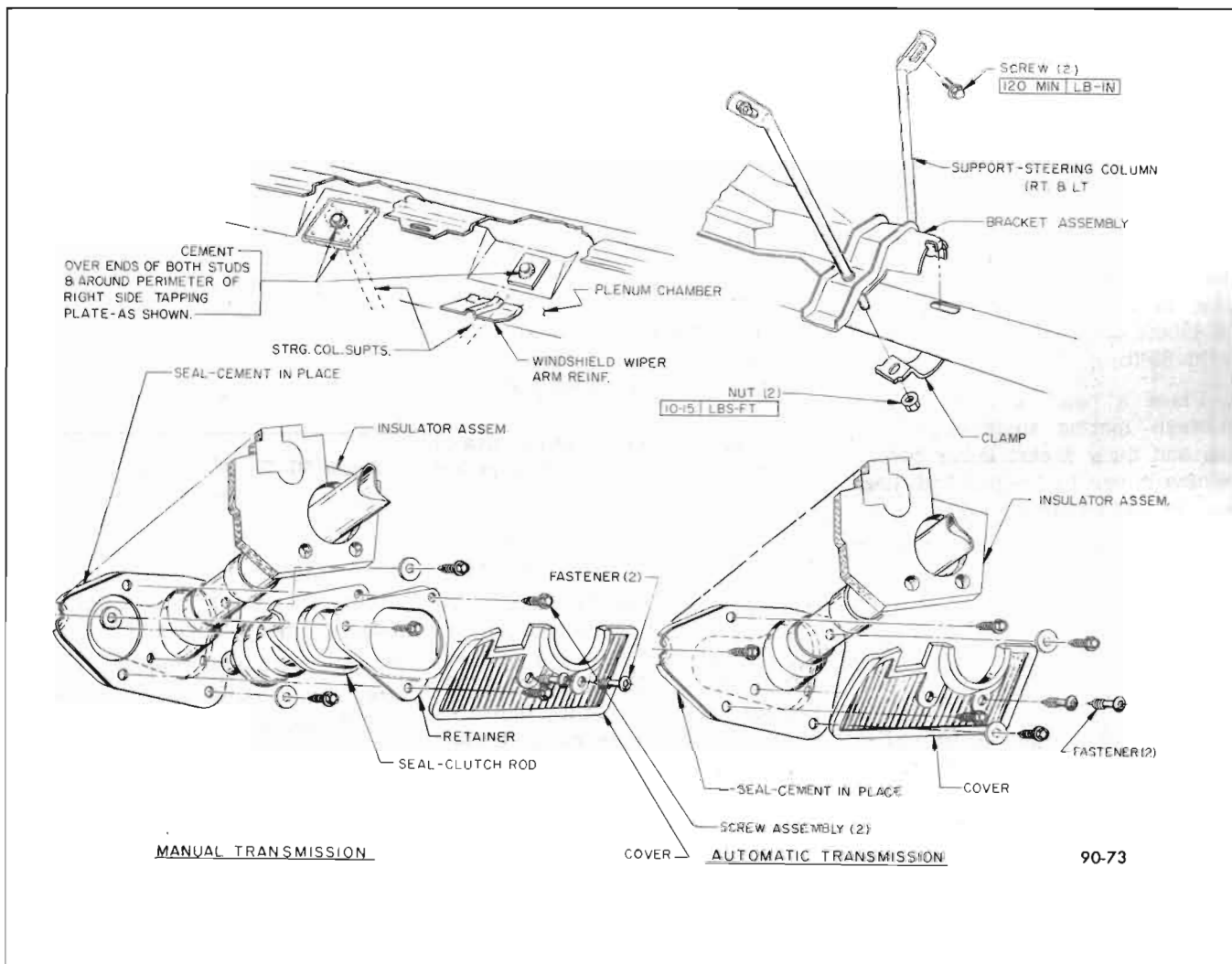


Figure 90-73—Mast Jacket Installation (43-44000 Series)

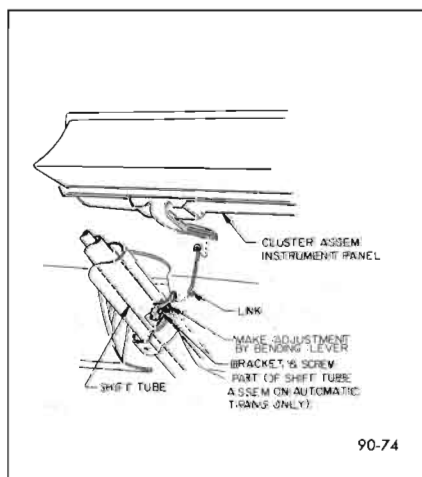


Figure 90-74—Removing Shift Indicator (45-46-48-49000 Series)

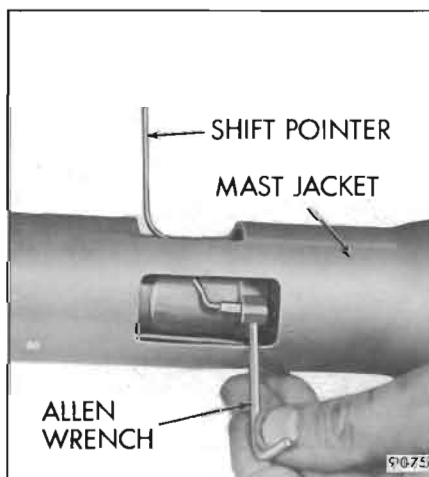


Figure 90-75—Removing Shift Indicator (43-44000 Series)

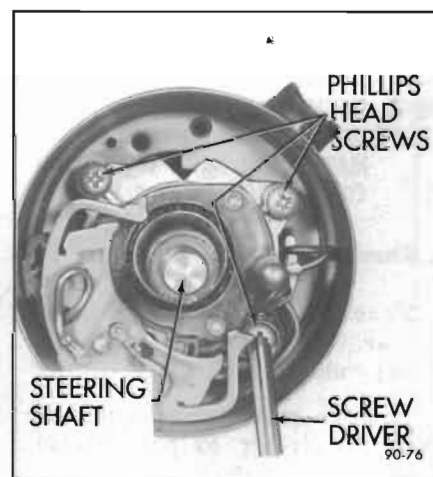


Figure 90-76—Removing Steering Shaft Upper Bearing Adapter Screws

NOTE: When connecting steering shaft coupling to gear coupling, be sure that pin of larger diameter fits into slot of larger diameter.

2. Install bolt to mast jacket clamp and torque 12 to 20 lb. ft.

3. On 43-44000 series tighten two nuts securing steering shaft coupling to gear coupling and torque nuts 15 to 20 lb. ft. On 45-46-48-49000 series tighten pinch bolt to 20-35 lb. ft.

4. Place a bead of body sealer between mating surfaces of toe pan and mast jacket lower cover. Secure cover to toe pan with four screws and washers.

5. Plug wiring harness connectors into switches.

6. On three speed manual transmission cars connect clutch release rod to clutch pedal and secure in position with clip.

7. Attach and secure shift rod(s) to shift lever(s) on three speed transmission and automatic transmission equipped cars.

8. On automatic transmission cars check and adjust neutral safety switch.

9. Install plastic trim cover and secure in position with two fastener pins. Drive pins in place with suitable dowel. See Figure 90-73.

90-20 DISASSEMBLY AND REASSEMBLY OF AUTOMATIC TRANSMISSION MAST JACKET AND TRANSMISSION CONTROL SHAFT ASSEMBLY

a. Disassembly

1. Take off steering wheel (refer to par. 90-4), spring, and turn signal cancelling cam.

2. Remove mast jacket assembly from car (refer to par. 90-19).

3. Remove neutral safety and back-up lights switch and lever from mast jacket.

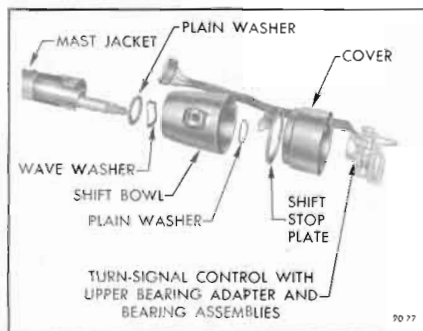


Figure 90-77—Disassembly of Upper Portion of Automatic Transmission Mast Jacket (43-44000 Series)

4. Remove clip holding mast jacket wiring cover to mast jacket and pull out cover.

5. Remove screw from directional signal lever and take out lever.

6. On 43-44000 series loosen set screw holding shift pointer to shift tube and slide out pointer. See Figure 90-75. On 45-46-48000 series remove shift indicator screw and lever from shift tube.

NOTE: Refer to Figure 90-82, 90-83, 90-84 and 90-85 for exploded views of all series automatic transmission mast jacket assemblies.

7. Drive out pin holding shift lever to shift bowl and take off lever. Spring used on manual transmission columns only.

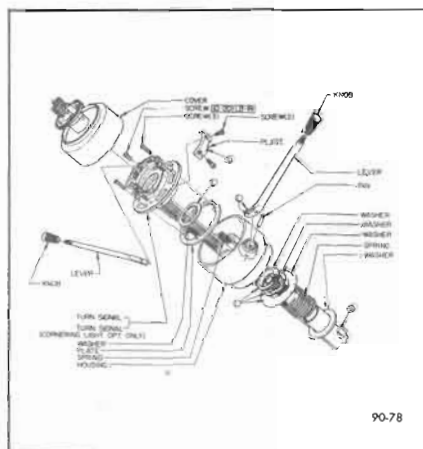


Figure 90-78—Disassembly of Upper Portion of Automatic Transmission Mast Jacket (45-46-48000 Series)

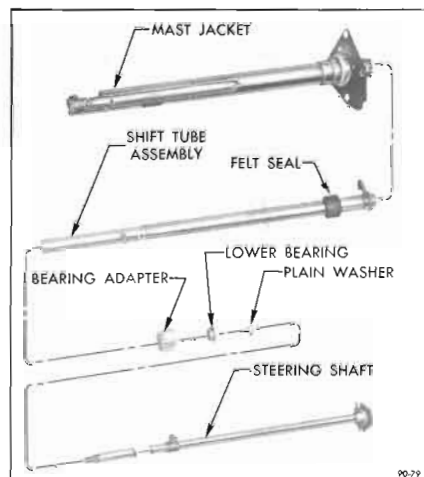


Figure 90-79—Disassembly of Lower Portion of Automatic Transmission Mast Jacket (All Series)

8. Remove three screws on steering shaft upper bearing adapter. See Figure 90-76.

9. On 43-44000 Series twist steering column cover in a counterclockwise direction and lift out turn signal control with upper bearing adapter and bearing assemblies, cover, shift stop plate, washer, and shift bowl. See Figures 90-77 and 90-78. On 45-46-48-49000 series it is not necessary to turn column over.

10. Take out steering shaft centering wave washer and plain washer.

11. Remove two screws (43-44000 only) securing bearing adapter assembly to mast jacket and withdraw steering shaft, washer, bearing, bearing adapter, shift tube and felt seal from mast jacket. See Figure 90-79.

b. Reassembly

Reassemble reverse of disassembly procedures.

NOTE: To facilitate reassembly of upper portion of mast jacket, align screw holes (3) of bearing adapter, cover and shift stop plate prior to reassembly. It will be necessary to hold the

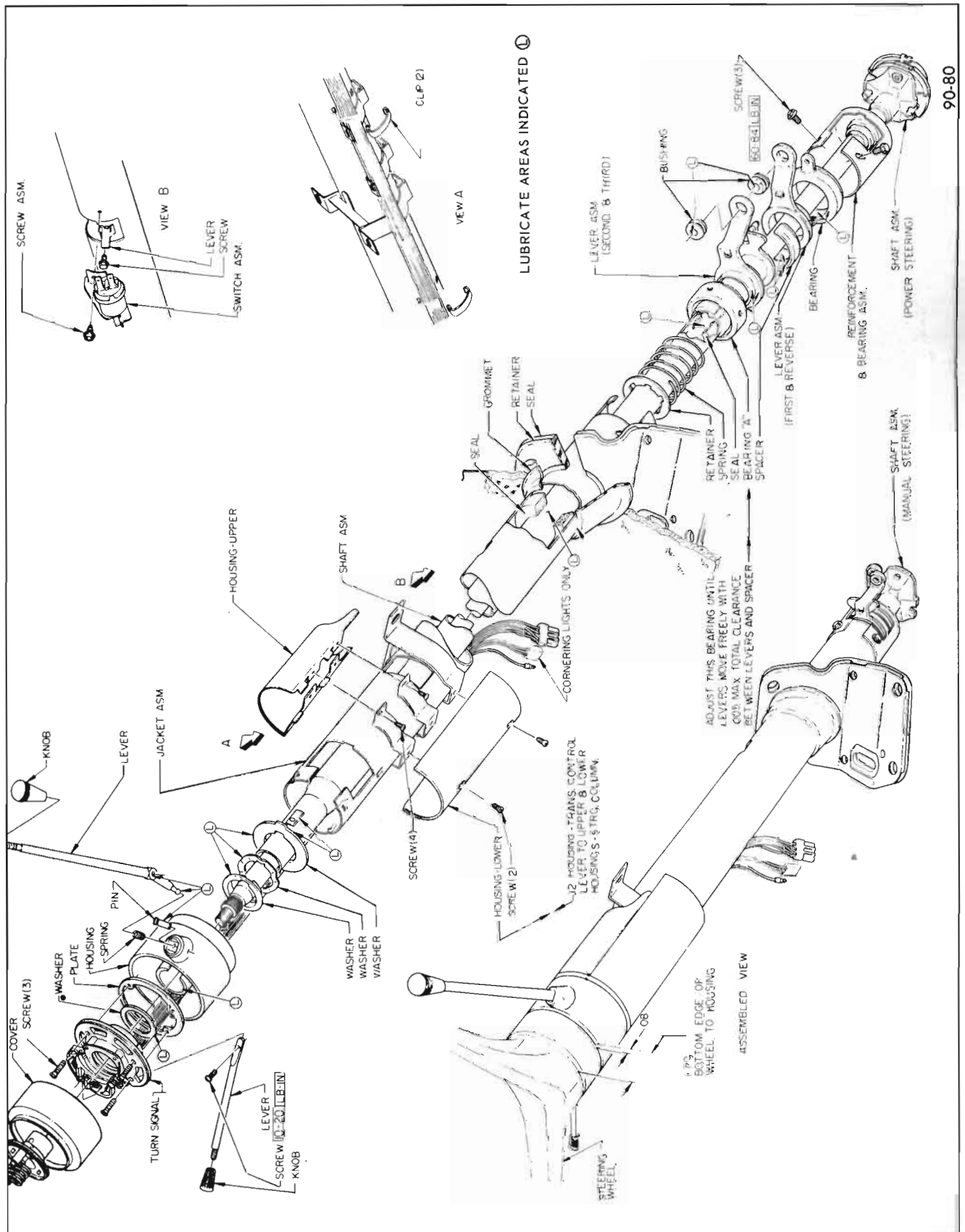


Figure 90-80—45-46000 Series - 3-Speed Manual Transmission Column

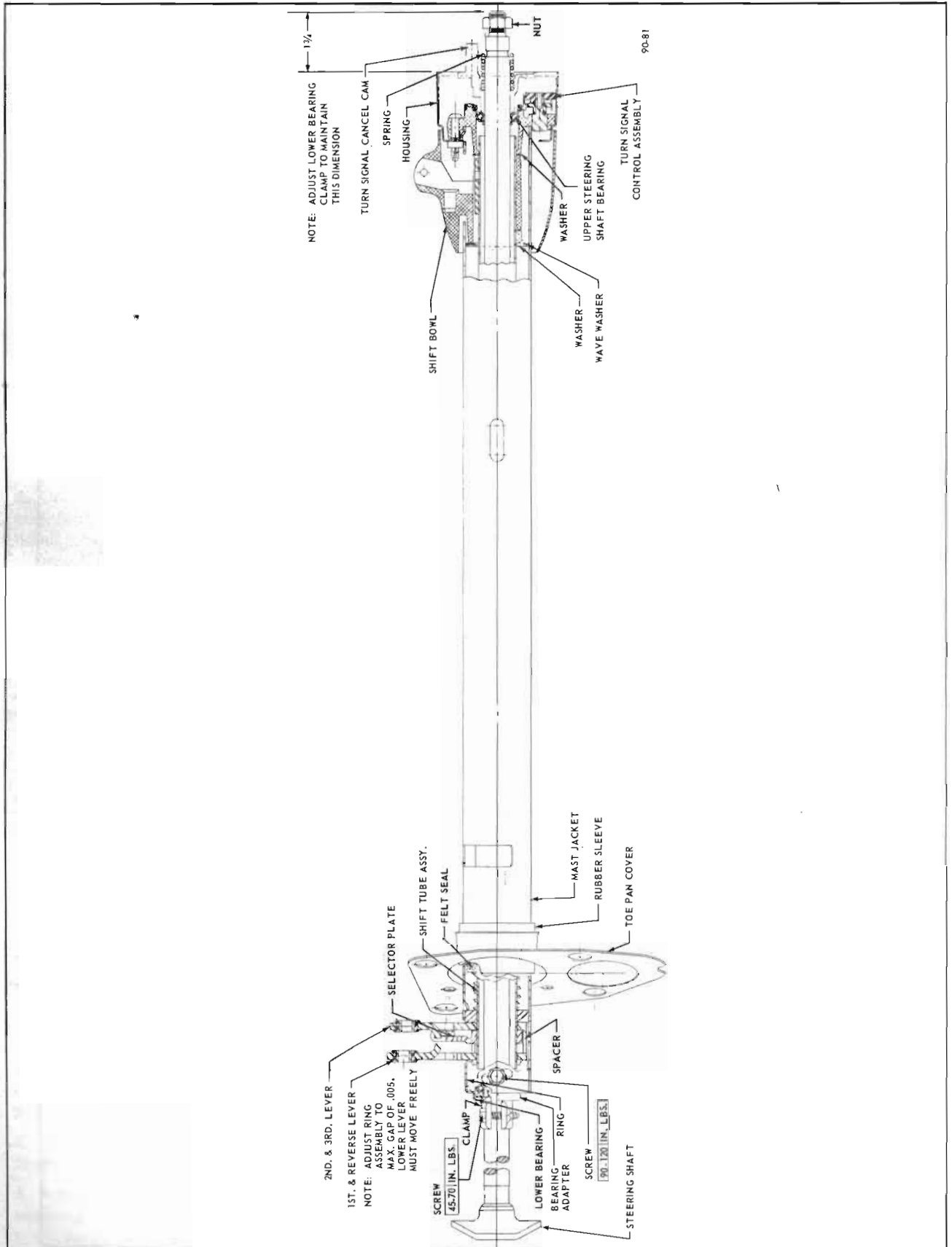


Figure 90-81—Mast Jacket and Transmission Control Shaft Assembly Three Speed Manual Transmission (43-44000 Series)

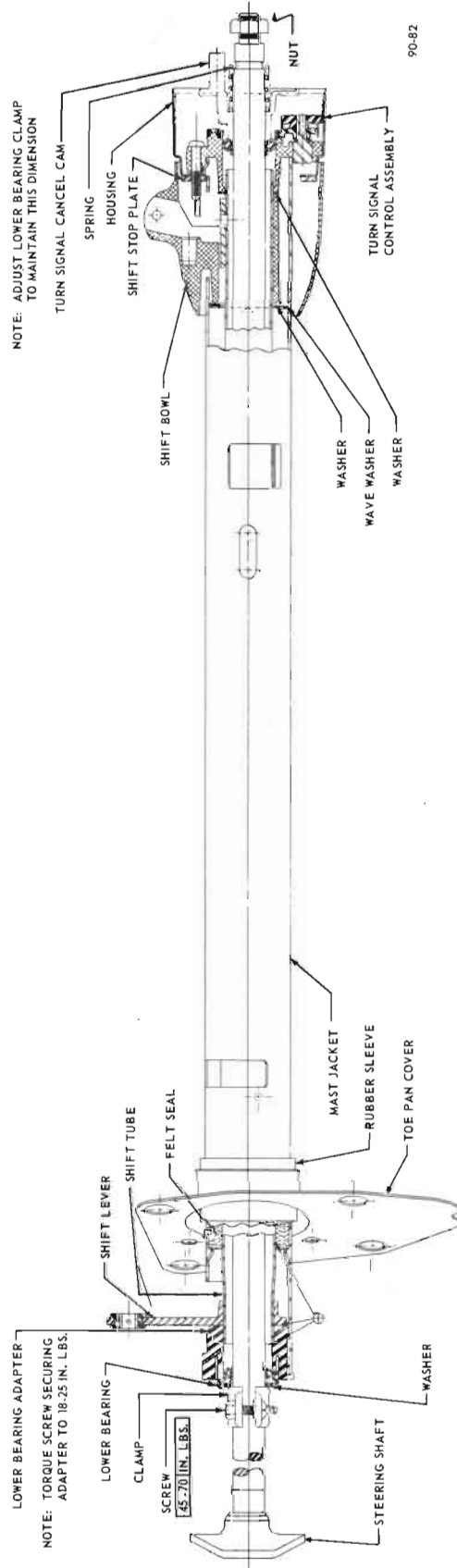
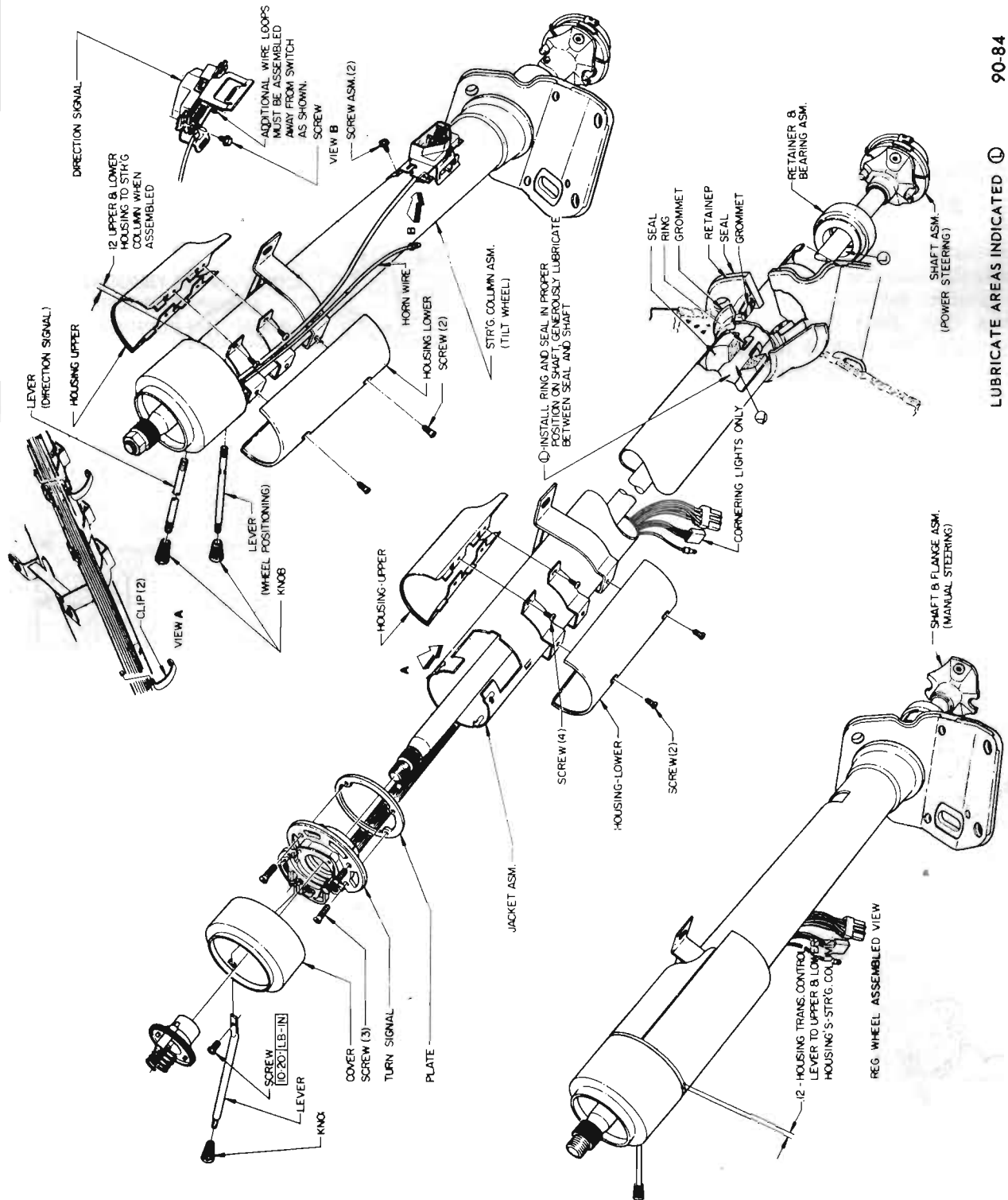


Figure 90-82—Mast Jacket and Transmission Control Shaft Assembly - Automatic Transmission 43-44000 Series



Figure 90-83--45-46-48000 Series - S.T. 300 and S.T. 400 Column Shift



LUBRICATE AREAS INDICATED ① 90-84

Figure 90-84—46000 Series - Console Shift Column



Figure 90-85—49000 Series - Non-Tilt Column

shift stop plate in position by inserting a thin bladed tool behind the shift stop plate. Insert the tool in the opening at the bottom of the shift bowl.

NOTE: If the clamp on the steering shaft was loosened or removed, readjust dimension of upper end of shaft to cover as shown in Figure 90-81.

90-21 DISASSEMBLY AND REASSEMBLY OF THREE SPEED MANUAL TRANSMISSION MAST JACKET AND TRANSMISSION CONTROL SHAFT ASSEMBLY

a. Disassembly

NOTE: The disassembly of the three speed manual transmission mast jacket is similar to the disassembly procedures for automatic transmission mast jacket. To disassemble perform Steps 1 through 5, and 7 and 8 of paragraph 90-20, subparagraph "a", and proceed as follows:

1. Twist steering column cover in a counterclockwise direction, and lift out turn signal control with upper bearing adapter and bearing assembly, cover, washer, and shift bowl (see Figure 90-80).
2. Take out steering shaft centering wave washer and plain washer.

3. From lower end of mast jacket assembly pull out steering shaft and plain washer.

4. Remove screws securing ring assembly to mast jacket and pull out lower bearing, ring, lever, spacer, shift tube assembly with felt seal, and mast jacket (see Figures 90-80 and 90-81).

b. Reassembly

1. Reassemble reverse of disassembly procedures.

NOTE: When reassembling steering column cover be sure the cover is rotated to its full extent in a clockwise direction or the three phillips screws will not lock the cover to the mast jacket.

NOTE: If the clamp on the steering shaft was loosened, readjust dimension of upper end of shaft to cover as shown in Figure 90-81.

2. Adjust ring at lower portion of mast jacket for maximum gap of .005 inch. Lower lever must move freely. See Figure 90-81.

90-22 DISASSEMBLY AND REASSEMBLY CONSOLE MAST JACKETS

a. Disassembly

1. Take out steering wheel (refer to par. 90-4), spring and turn signal cancelling cam.

2. Remove mast jacket assembly from car.

3. Remove clip holding mast jacket wiring cover to jacket and pull off cover.

4. Remove screw from directional signal lever and take out lever.

5. Remove three phillips screws on steering shaft upper bearing adapter.

6. Twist steering column cover in a counterclockwise direction and lift out steering column cover with shift bowl, and also turn signal control with upper bearing adapter and bearing assembly.

7. Remove two screws (43-44000 only) securing lower bearing adapter to mast jacket and slide out steering shaft, plain washer, steering shaft lower bearing adapter and bearing, and seal.

b. Reassembly

Reassemble reverse of disassembly procedure.

NOTE: When reassembling steering column cover be sure the cover is rotated to its full extent in a clockwise direction or the three phillips screws will not lock the cover to the mast jacket.

If the clamp on the steering shaft was loosened, readjust dimension of upper end of shaft to cover.