

GROUP 0

INTRODUCTION—GENERAL INFORMATION

CONTENTS OF GROUP 0

Subject	Page	Subject	Page
Introduction	0-1	Rear Axle Ratios	0-6
1965 Buick Models	0-2	General Specifications	0-7
Vehicle and Major Component Identification Numbers	0-2		

INTRODUCTION

1. **GROUPS.** The manual is divided into the consecutively numbered major Groups shown on the preceding title page. To locate the first page of a Group, bend the manual until the black tab on first page of group can be seen in line with the Group title on title page.

The first page lists the contents of the Group.

2. **SECTIONS.** Large Groups are divided into appropriate Sections as shown on first page of the group. Sections bear the Group number and letters A, B, C, etc., in alphabetical order.

The first page of each Section lists the contents of section.

3. **PARAGRAPHS.** Each Group is divided into appropriate Paragraphs which are numbered consecutively within the Group, whether or not the group is divided into sections.

Paragraph titles and page numbers are listed on the first page of each Section if used, or on first page of the Group if sections are not used.

4. **SUB-PARAGRAPHS.** Where necessary for clarity, or distinction between models, Paragraphs are divided into appropriately titled Sub-paragraphs. These are usually lettered in alphabetical order within the paragraph.

5. **PAGE AND ILLUSTRATION NUMBERS.** Pages and illustrations are numbered consecutively within each Group. The number consists of the Group number followed by the Page or Figure number. Page numbers are printed in the upper outer corners of all pages.

6. **CROSS REFERENCES.** All references to information in other parts of manual are made by Paragraph Number, to avoid the necessity of first referring to the alphabetical index for location. Paragraph references are usually given in parentheses, for example: (par. 7-15) refers to the 15th paragraph in Group 7, "Chassis Suspension".

7. **SPECIAL TOOLS.** In locations where special tools are not locally available, they may be obtained through the Service Merchandising Department, General Motors Products of Canada, Ltd., Oshawa, Ont.

The third digit (5) indicates the model year, the remaining digits are the non-duplicated engine number commencing at 600001 for the 300 V8, and 690001 for the 401 V8.

Transmission Identification— Automatic transmission identification is the same as U.S. production, refer to Figure 0-5.

Synchromesh Transmissions and Rear Axles— Canadian built Synchromesh transmissions and rear axles do not use serial numbers or identification numbers.

Vehicle Identification Number (US Built Models)— All 1965 models have a serial number identification plate attached to the left front body hinge pillar. An example of this plate is shown in Figure 0-3.

Fisher Body Number Plate— Body identification is provided by the Fisher Body Number Plate. Information such as style and body numbers, trim numbers, and paint color code is found on this plate. Refer to the 1965 Body Service Manual for detailed information regarding this plate.

Engine Numbers— All 1965 engines are stamped with two different identification codes. One is the production code number. See Figure 0-4. This identifies the type of engine and its production date. The other is the engine serial number. This is the legal engine number and is the same number found on the vehicle identification plate. This

number is used on registrations, titles, and other legal documents while the production code number is used to identify the engine on product reports and similar correspondence.

300 cu. in. V-8

Production Code Number— Stamped on the right side of the crankcase and can be viewed between the middle branches of the right exhaust manifold.

Serial Number— Stamped on the left front face of the crankcase, just below the rocker arm cover. On cars equipped with power steering it will be necessary to remove the power steering pump bracket to view the complete number.

401 and 425 cu. in. V-8

Production Code Number— Is stamped on the front edge of the crankcase just to the right of the thermostat housing. When viewed from the front of the car it will appear upside down.

Serial Number— Is stamped on the front edge of the crankcase just to the left of the thermostat housing. When viewed from the front of the car it will appear right side up.

Automatic Transmission Identification Numbers - On Super Turbine "300" transmissions, identification information is stamped on the low servo cover as shown in Figure 0-5. On Super Turbine "400" transmissions, this information can be

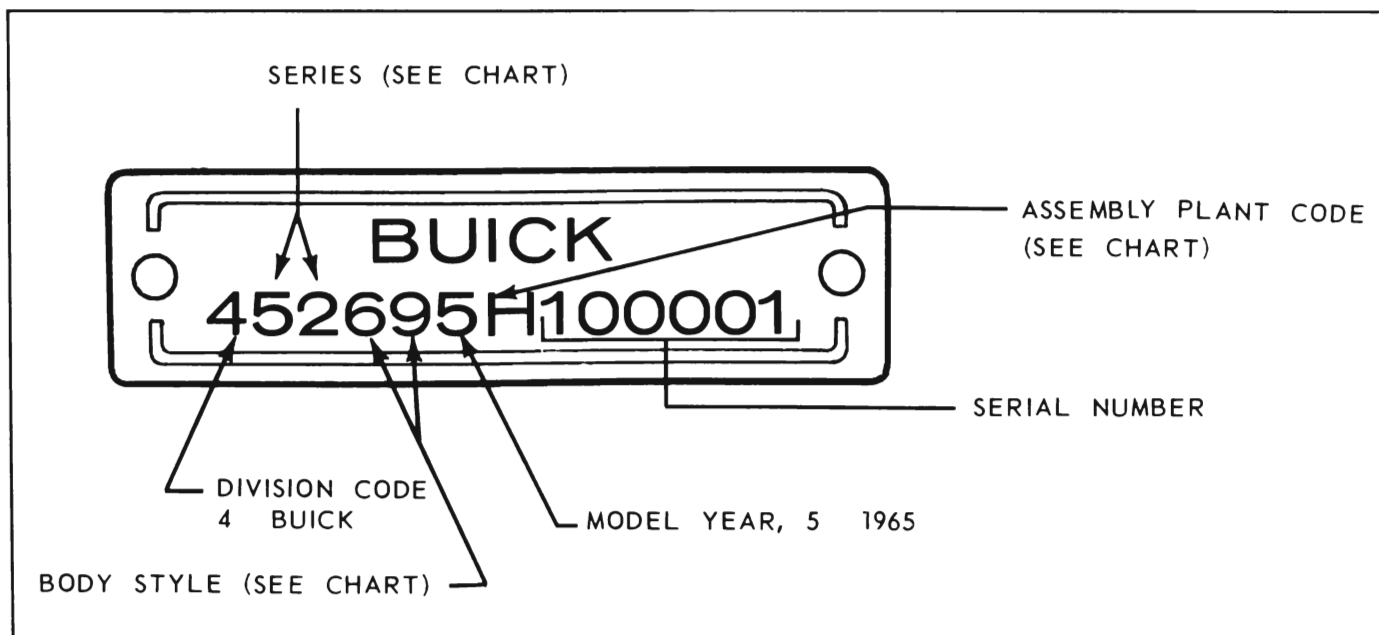


Figure 0-3—Vehicle Identification Plate

0-2 INTRODUCTION**1965 BUICK MODELS**

Series	Body Style	Designation	Series	Body Style	Designation	
LeSabre	2-Door Pillarless Sport Coupe	45237	Wildcat	2-Door Pillarless Sport Coupe	46637*	
	4-Door Pillarless Sedan	45239	Custom	4-Door Pillarless Sedan	46639*	
	4-Door Thin Pillar Sedan	45269		2-Door Convertible	46667*	
LeSabre	2-Door Pillarless Sport Coupe	45437*		4-Door Thin Pillar Sedan	46669*	
Custom	4-Door Pillarless Sedan	45439*	Electra	2-Door Pillarless Sport Coupe	48237	
	2-Door Convertible	45467*		225	4-Door Pillarless Sedan	48239
	4-Door Thin Pillar Sedan	45469*		4-Door Thin Pillar Sedan	48269	
Wildcat	2-Door Pillarless Sport Coupe	46237	Electra	2-Door Pillarless Sport Coupe	48437	
	4-Door Pillarless Sedan	46239		225	4-Door Pillarless Sedan	48439
	4-Door Thin Pillar Sedan	46269		Custom	2-Door Convertible	48467
Wildcat	2-Door Pillarless Sport Coupe	46437	4-Door Thin Pillar Sedan		48469	
	Deluxe	4-Door Pillarless Sedan	46439		Riviera	2-Door Pillarless Sport Coupe
	2-Door Convertible	46467				
4-Door Thin Pillar Sedan	46469					

*Canadian Built Models.

VEHICLE AND MAJOR COMPONENT IDENTIFICATION NUMBERS

Vehicle Identification Numbers (Domestic Built Models) - The 1965 Canadian Vehicle Identification Number Plate, as shown in Figure 0-1, is located on the left hand front hinge pillar above the lower hinge.

The first digit (5) indicates the model year, the second digit (4) indicates the Car Division at which the model originates (Buick), the third digit (6) is indicative of the series, the fourth digit is indicative of the engine, the fifth and six digit indicate the body style. The remaining six digits (commencing at 050001) are the non-duplicated individual car identification numbers.

Body and Style Number Plate— The body and style numbers are stamped on a plate which is located on the right hand upper dash panel as viewed from the front.



Figure 0-1—Canadian Vehicle Identification Number Plate

The plate shows the style number, body number, paint and trim numbers and production body options (as shown in Figure 0-2).

Engine Numbers— Only one engine number is stamped on Canadian built engines, the production code number is not used. The location of the engine serial number is the same as U.S. production.

The first two digits indicate the series and options:

32 - 300 V8 With Syn. Trans. 38 - 401 V8
92 - 300 V8 With Auto. Trans.

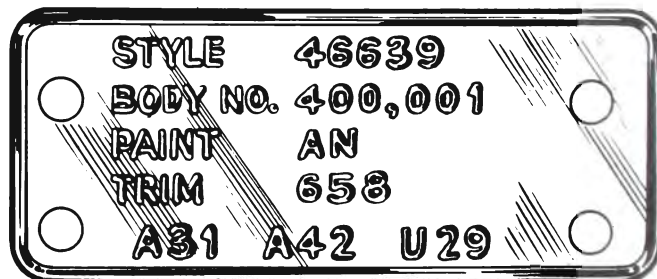


Figure 0-2—Canadian Body and Style Number Plate

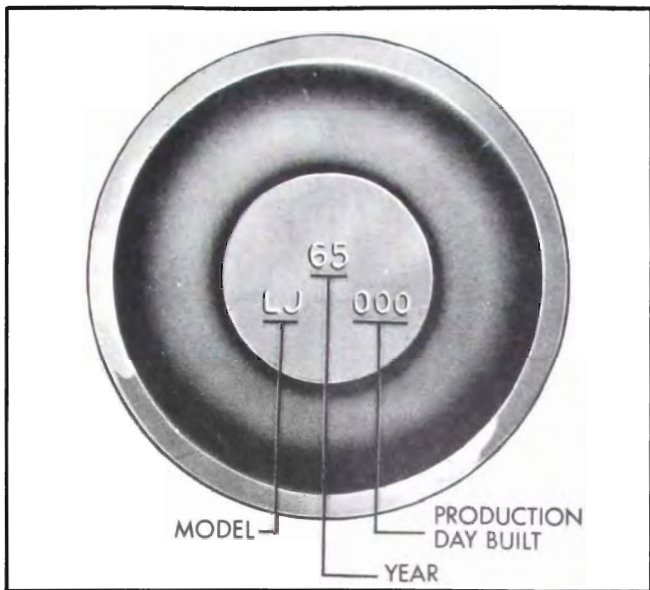


Figure 0-5—Transmission Identification - Super Turbine "300"

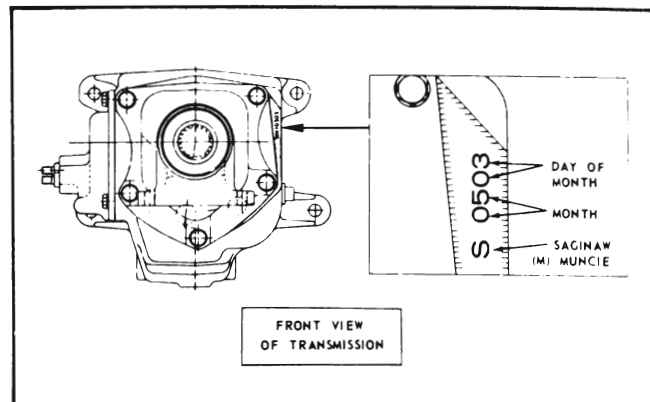


Figure 0-7—LeSabre 3-Speed Synchromesh Transmission Identification (U.S. Production)

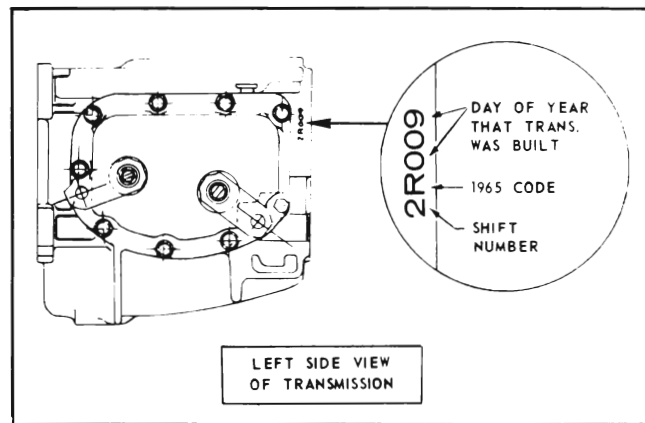


Figure 0-8—Wildcat 3-Speed Synchromesh Transmission Identification (U.S. Production)

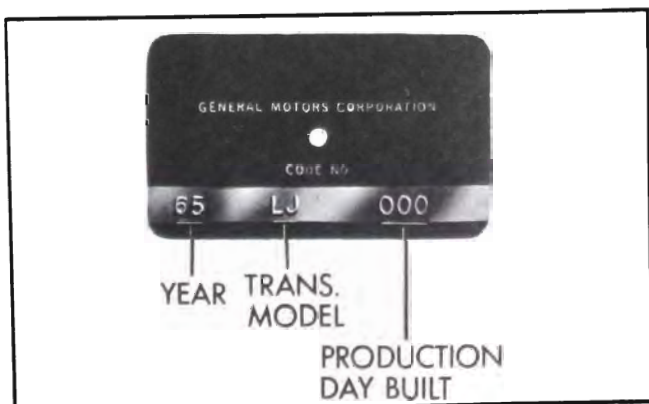


Figure 0-6—Transmission Identification - Super Turbine "400"

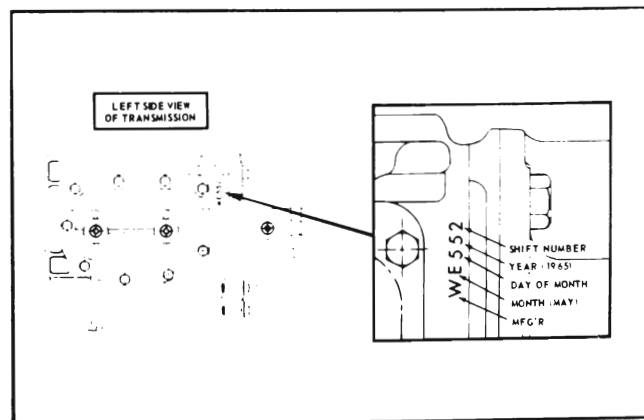


Figure 0-9—Wildcat 4-Speed Synchromesh Transmission Identification (U.S. Production)

0-4 INTRODUCTION

U.S. Assembly Plant Code

Plant	Plant Symbol
Flint	H
South Gate	C
Fremont	Z
Kansas City, Kansas	X
Wilmington	Y
Atlanta	D
Baltimore	B
Kansas City, Mo.	K

Vehicle Series Code

LeSabre	52
LeSabre Deluxe	54
Wildcat	62
Wildcat Deluxe	64
Wildcat Custom	66
Electra 225	82
Electra 225 Custom	84
Riviera	94

Body Style Code

2 Dr. Coupe	27
4 Dr. Station Wagon-2 Seat	35
2 Dr. Hardtop Coupe	37
4 Dr. Hardtop	39
2 Dr. Hardtop Coupe	47
4 Dr. Station Wagon-2 Seat	55
4 Dr. Station Wagon-3 Seat	65
2 Dr. Convertible	67
4 Dr. Sedan	69

found on a plate attached to the right side of the case.

Synchromesh Transmission Serial Numbers - All synchromesh transmissions have a serial number stamped on the case. This number should be used

in identifying transmissions on product reports. See Figures 0-7, 0-8, and 0-9.

Rear Axle Marking - Figures 0-10 and 0-11 show the identification marking found on the rear axle. This information should also be included on product reports involving the rear axle.

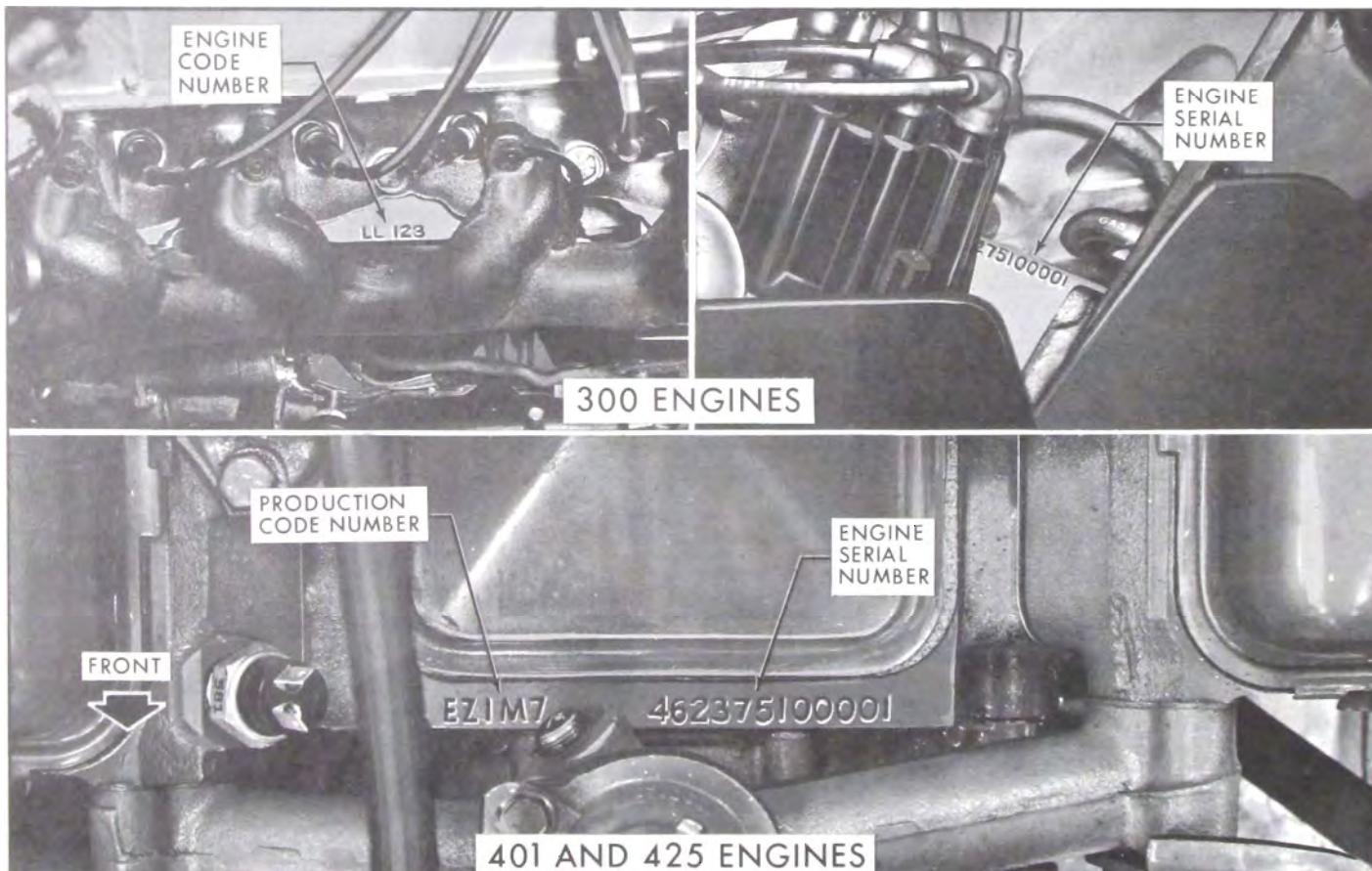


Figure 0-4—Engine Serial Number and Production Code Location (U.S. Production)

GENERAL SPECIFICATIONS

LeSabre Series 4500					
Wheelbase	Front Tread	Rear Tread	Length	Width	Height
123"	63.0"	63.0"	217"	80"	55.2"
Tire Size - 8.15-15 Standard			8.45-15 Optional Oversize		
Wildcat Series 46000					
Wheelbase	Front Tread	Rear Tread	Length	Width	Height
126"	63.4"	63.0"	220"	80"	55.2"
Tire Size - 8.45-15 Standard			8.85-15 Optional Oversize		
Electra 225 Series 48000					
Wheelbase	Front Tread	Rear Tread	Length	Width	Height
126"	63.4"	63.0"	223"	80"	56.0"
Tire Size - 8.85-15					
Riviera 49000					
Wheelbase	Front Tread	Rear Tread	Length	Width	Height
117"	63.4"	59.0"	208"	76.6"	53.0"
Tire Size - 8.45-15 Standard			8.85-15 Optional Oversize		

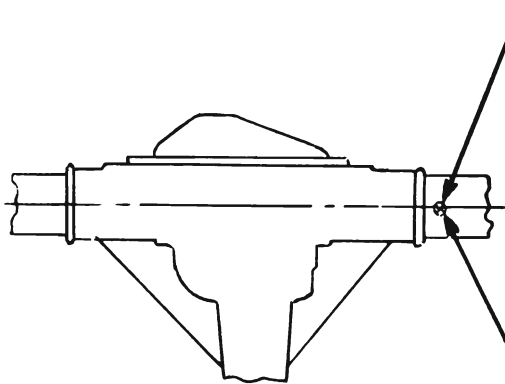
CAPACITIES

Series 45000-46000-48000		Crankcase - Qts.	
Cooling System - 45000		300 Cu. In.	3 (4) Dry Filter
With Heater	10.3 qts.	401 x 425 Cu. In.	3 (4) Dry Filter
Without Heater	9.7 qts.		
With Air Conditioning	12.1 qts.		
Cooling System - 46, 48000		Series 49000	
With Heater	14.7 qts.	Cooling System	
Without Heater	13.9 qts.	With Heater - Qts.	15-1/2
With Air Conditioning	15.2 qts.	Without Heater - Qts.	14-1/4
Gasoline Tank - Gallons		Crankcase	
All	20-3/4	Refill - Qts.	3 (*4)
Rear Axle - Pts.		Dry Engine - Qts.	4 (*5)
All Exc. 45000	3-3/4	*With Dry Oil Filter	
45000	2	Gas Tank - Gal.	16-3/4
		Rear Axle - Pts.	3-3/4
		Automatic Transmission Pts.	17-1/2
		Power Steering	
		Hydraulic System - Pts.	2-1/2

0-6 INTRODUCTION

AXLE TYPE	MFG. AXLE CODE	RATIO	SERIES
STANDARD DIFFERENTIAL	NA	3.55	45 SYNC.
	NB	3.08	45 2 & 3-SP. AUTO.
	NC	(S.C.O.)	ALL
POSITIVE TRACTION DIFFERENTIAL	NN	3.55	45 SYNC.
	NO	3.08	45 2 & 3-SP. AUTO.
	NP	(S.C.O.)	ALL

(FIELD IDENTIFICATION)



FOR FIELD IDENTIFICATION, ALL AXLE ASSEMBLIES TO BE STAMPED ON BOTTOM OF AXLE TUBE AS INDICATED FROM CHART. SAMPLE MARKING FOR 3.08 RATIO. DATE JULY 22 WOULD BE . . . STANDARD AXLES A-203, POSITIVE TRACTION AXLES Ⓟ A-20 3.

SAMPLE MARKING FOR S.C.O. RATIO DATE JULY 22 WOULD BE . . . STANDARD AXLES 2.56-203, POSITIVE TRACTION AXLES Ⓟ 2.56-203

.50 DIA. APPROX.
TO BE ON BOTTOM OF AXLE TUBE WITH FIELD IDENTIFICATION CODE

NOTE: "S.C.O." INDICATES SPECIAL ORDER AXLE

Figure 0-10—Rear Axle Marking - LeSabres Only (U.S. Production)

STANDARD REAR AXLE RATIOS*

Series-Model	Transmission	Ratio
45000-LeSabre	3-Speed Synchromesh	3.55
45000-LeSabre	Automatic	3.08
46000-Wildcat	3-Speed Synchromesh	3.42
46000-Wildcat	4-Speed Synchromesh	3.42
46000-Wildcat	Automatic	3.07
48000-Electra 225	Automatic	3.07
49000-Riviera	Automatic	3.07

*Same ratios are used for either standard or Positive Traction rear axles.

Figure 0-11—Rear Axle Marking - Wildcat, Electra 225, and Riviera