

## SECTION 8-C

### MAST JACKET ASSEMBLY

#### CONTENTS OF SECTION 8-C

Paragraph	Subject	Page	Paragraph	Subject	Page
8-19	Removal and Installation of Steering Mast Jacket Assembly . . . . .	8-42	8-21	Disassembly and Reassembly of Three Speed Synchromesh Transmission Mast Jacket and Transmission Control Shaft Assembly . . . . .	8-43
8-20	Disassembly and Reassembly of Automatic Transmission Mast Jacket and Transmission Control Shaft Assembly . . . . .	8-42	8-22	Disassembly and Reassembly of Four Speed Synchromesh Transmission Mast Jacket . . . . .	8-45

### 8-19 REMOVAL AND INSTALLATION OF STEERING MAST JACKET ASSEMBLY

#### a. Removal

1. Remove two nuts securing shaft lower coupling to lower steering shaft flange. See Figures 8-10 and 8-31.
2. On automatic or three speed synchromesh transmission equipped cars remove clip from shift rod(s) and pull rod(s) out of mast jacket shift lever (s).
3. On three speed synchromesh transmission equipped cars remove clip securing clutch rod to clutch pedal, and disengage rod.
4. Remove screws that retain toe pan cover to toe pan. See Figure 8-68.
5. Disconnect wiring harness from mast jacket.
6. Remove nut that retains mast jacket clamp to instrument panel.
7. Align shift lever(s) with hole in toe pan (automatic and three speed synchromesh transmissions only) and remove jacket assembly.

#### b. Installation

1. Align shift lever(s) with hole in toe pan (automatic and three

speed synchromesh transmissions only) and install end of mast jacket through hole. Position lower steering shaft flange onto gear coupling flange and loosely attach jacket to instrument panel.

NOTE: When installing mast jacket be sure to align tab on bracket with slot in mast jacket (see Figure 8-68).

NOTE: When connecting steering shaft coupling to gear coupling, be sure that pin of larger diameter fits into slot of larger diameter.

2. Install bolt to mast jacket clamp and torque 12 to 20 lb. ft.
3. Tighten two nuts securing steering shaft coupling to gear coupling and torque nuts 15 to 20 lb. ft.
4. Place a bead of body sealer between mating surfaces of toe pan and mast jacket lower cover. Secure cover to toe pan with four screws and washers.
5. Plug wiring harness connectors into switches.
6. On three speed synchromesh transmission cars connect clutch rod to clutch pedal and secure in position with clip.
7. Attach and secure shift rod(s) to shift lever(s) on three speed transmission and automatic transmission equipped cars.

8. On automatic transmission cars check and adjust neutral safety switch.

9. Install plastic trim cover and secure in position with two fastener pins. Drive pins in place with suitable dowel.

### 8-20 DISASSEMBLY AND REASSEMBLY OF AUTOMATIC TRANSMISSION MAST JACKET AND TRANSMISSION CONTROL SHAFT ASSEMBLY

#### a. Disassembly

1. Take off steering wheel (refer to subpar. 8-5), spring, and turn signal cancelling cam. See Figure 8-69.
2. Remove mast jacket assembly from car (refer to par. 8-19).
3. Remove neutral safety and back-up lights switch from mast jacket.
4. Remove clip holding mast jacket wiring cover to mast jacket and pull out cover.
5. Remove screw from directional signal lever and take out lever.
6. Loosen set screw holding shift pointer to shift tube and slide out pointer. See Figure 8-70.

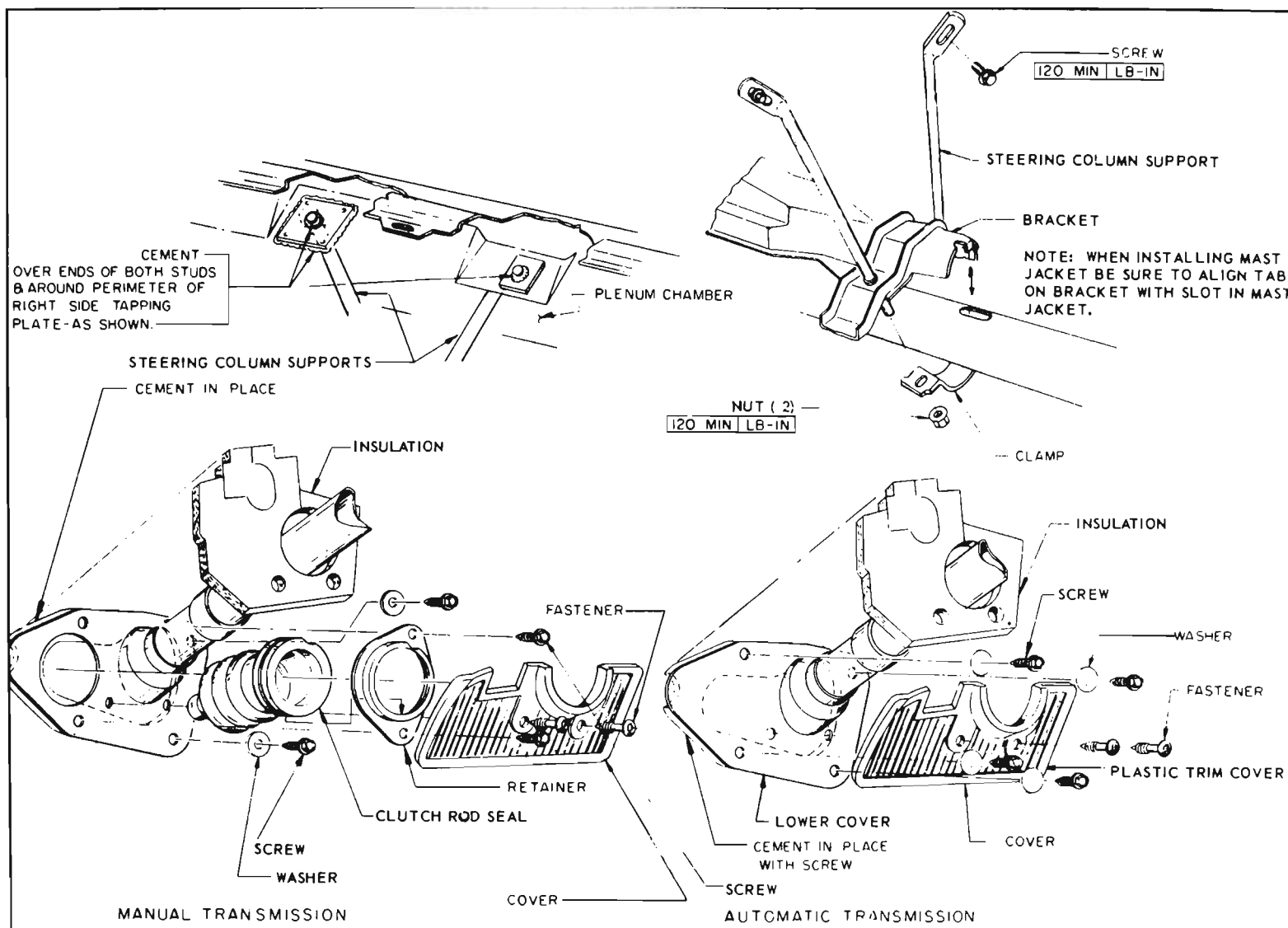


Figure 8-68—Mast Jacket Installation

7. Drive out pin holding shift lever to shift bowl and take off lever and spring.

8. Remove three screws on steering shaft upper bearing adapter. See Figure 8-71.

9. Twist steering column cover in a counterclockwise direction and lift out turn signal control with upper bearing adapter and bearing assemblies, cover, shift stop plate, washer, and shift bowl (see Figure 8-72).

10. Take out steering tube centering wave washer and plain washer.

11. Remove two screws securing bearing adapter assembly to mast

jacket and withdraw steering shaft, washer, bearing, bearing adapter, shift tube and felt seal from mast jacket (see Figure 8-73).

#### b. Reassembly

Reassembly reverse of disassembly procedures.

**NOTE:** To facilitate reassembly of upper portion of mast jacket, align screw holes (3) of bearing adapter, cover and shift stop plate prior to reassembly. It will be necessary to hold the shift stop plate in position by inserting a thin bladed tool behind the shift stop plate. Insert the tool in the opening at the bottom of the shift bowl.

**NOTE:** If the clamp on the steering shaft was loosened or removed, readjust dimension of upper end of shaft to cover as shown in Figure 8-76.

### 8-21 DISASSEMBLY AND REASSEMBLY OF THREE SPEED SYNCHROMESH TRANSMISSION MAST JACKET AND TRANSMISSION CONTROL SHAFT ASSEMBLY

#### a. Disassembly

**NOTE:** The disassembly of the three speed synchromesh transmission mast jacket is similar to

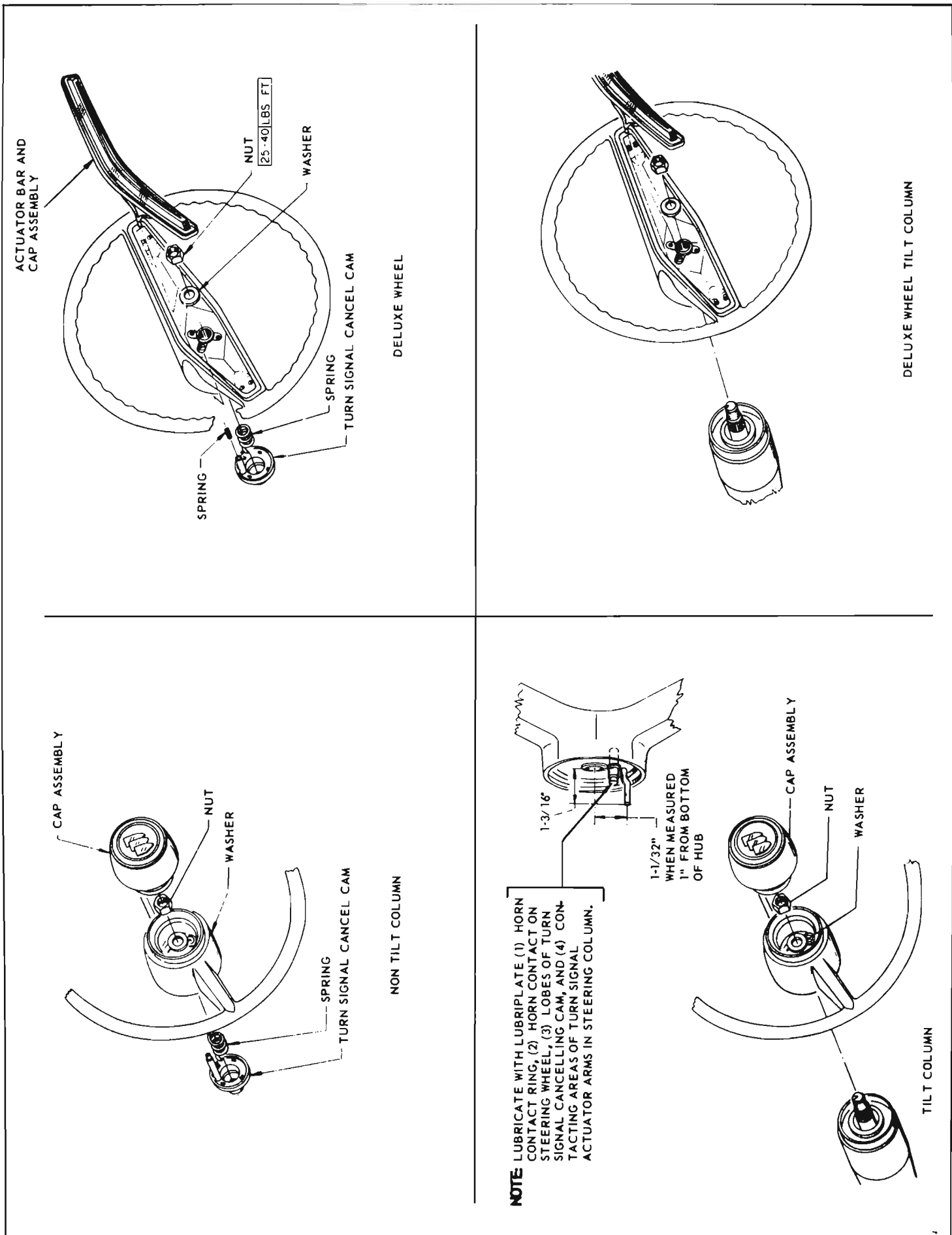


Figure 8-69—Deluxe and Standard Steering Wheel Installation

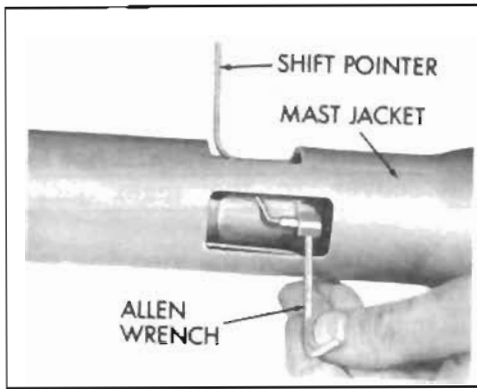


Figure 8-70—Removing Shift Pointer

the disassembly procedures for automatic transmission mast jacket. To disassemble perform Steps 1 through 5, and 7 and 8 of paragraph 8-20, subparagraph "a", and proceed as follows:

1. Twist steering column cover in a counterclockwise direction, and lift out turn signal control with upper bearing adapter and

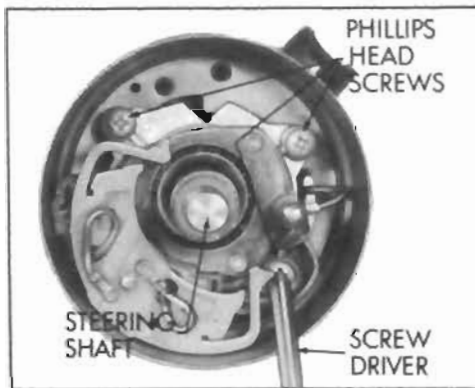


Figure 8-71—Removing Steering Shaft Upper Bearing Adapter Screws

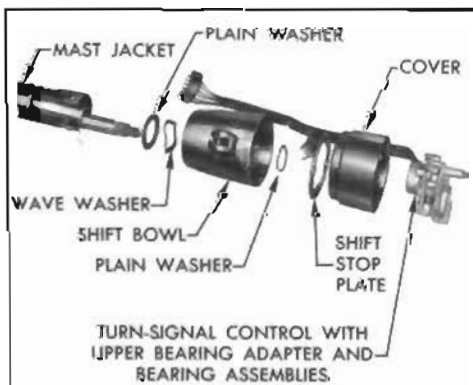


Figure 8-72—Disassembly of Upper Portion of Automatic Transmission Mast Jacket

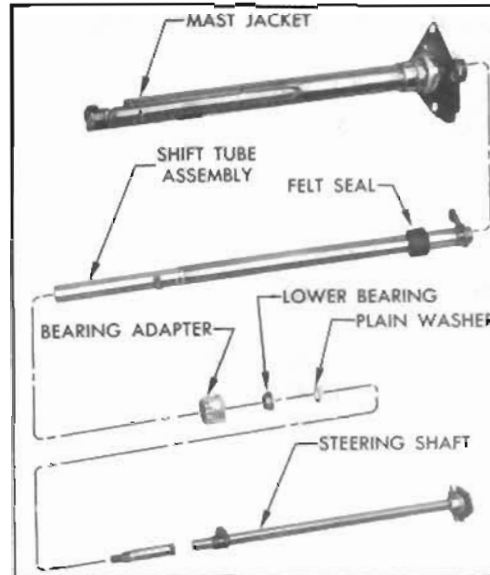


Figure 8-73—Disassembly of Lower Portion of Automatic Transmission Mast Jacket

bearing assembly, cover, washer, and shift bowl (see Figure 8-74).

2. Take out steering tube centering wave washer and plain washer.

3. From lower end of mast jacket assembly pull out steering shaft and plain washer.

4. Remove two screws securing ring assembly to mast jacket and pull out lower bearing, ring, lever, spacer, shift tube assembly with felt seal, and mast jacket (see Figure 8-75).

#### b. Reassembly

1. Reassemble reverse of disassembly procedures.

**NOTE:** When reassembling steering column cover be sure the cover is rotated to its full extent in a clockwise direction or the three phillips screws will not lock the cover to the mast jacket.

**NOTE:** If the clamp on the steering shaft was loosened, readjust dimension of upper end of shaft to cover as shown in Figure 8-77.

2. Adjust ring at lower portion of mast jacket for maximum gap of .005 inch. Lower lever must move freely. See Figure 8-77.

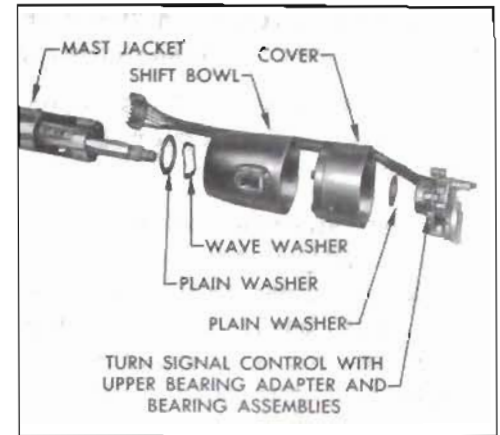


Figure 8-74—Disassembly of Upper Portion of 3 Speed Transmission Mast Jacket

## 8-22 DISASSEMBLY AND REASSEMBLY OF FOUR SPEED SYNCHROMESH TRANSMISSION MAST JACKET

### a. Disassembly

1. Take out steering wheel (refer to par. 8-5), spring and turn signal cancelling cam. See Figure 8-69.

2. Remove mast jacket assembly from car (refer to par. 8-19).

3. Remove clip holding mast jacket wiring cover to jacket and pull off cover.

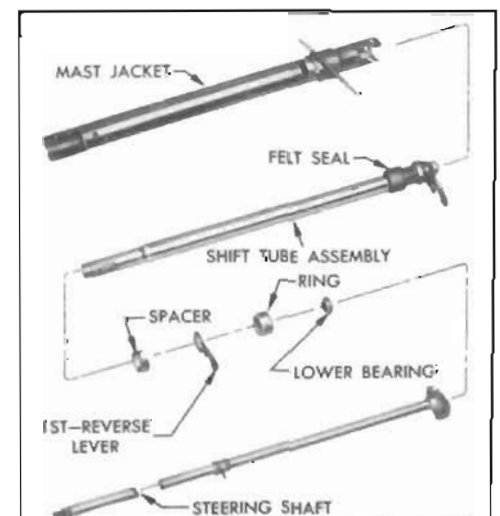


Figure 8-75—Disassembly of Lower Portion of 3 Speed Transmission Mast Jacket

4. Remove screw from directional signal lever and take out lever.

5. Remove three phillips screws on steering shaft upper bearing adapter.

6. Twist steering column cover in a counterclockwise direction and lift out steering column cover with shift bowl, and also turn signal control with upper bearing adapter and bearing assembly.

7. Remove two screws securing lower bearing adapter to mast jacket and slide out steering shaft, plain washer, steering shaft lower bearing adapter and bearing, and seal.

#### **b. Reassembly**

Reassemble reverse of disassembly procedure.

NOTE: When reassembling steering column cover be sure the cover is rotated to its full extent in a clockwise direction or the three phillips screws will not lock the cover to the mast jacket.

If the clamp on the steering shaft was loosened, readjust dimension of upper end of shaft to cover as shown in Figure 8-78.

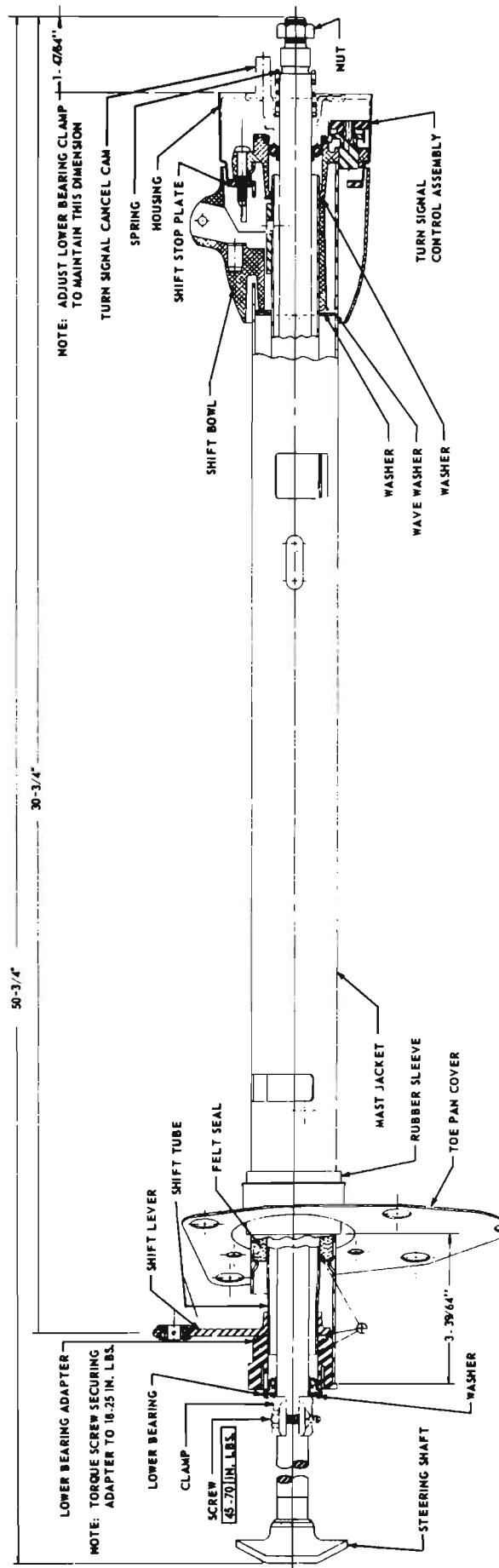


Figure 8-76—Mast Jacket and Transmission Control Shaft Assembly - Automatic Transmission

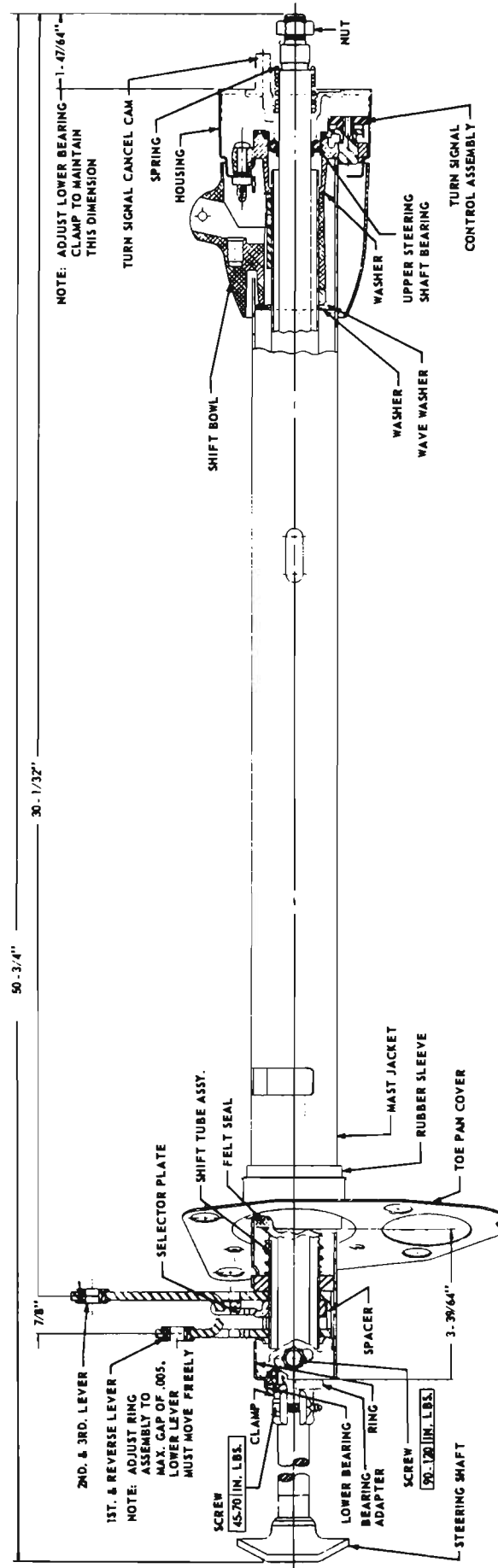


Figure 8-77—Mast Jacket and Transmission Control Shaft Assembly - Three Speed Synchromesh Transmission

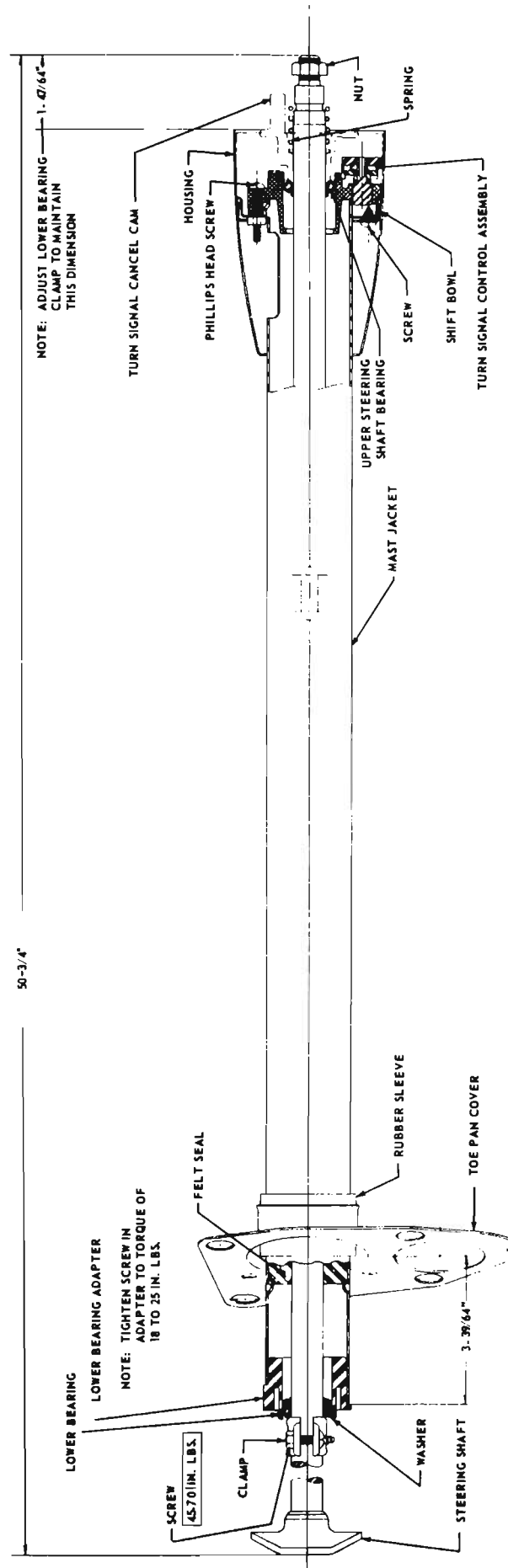


Figure 8-78—Mast Jacket Assembly - Four Speed Synchromesh Transmission