

## SECTION 13-E

## REAR END (SERIES 40-60)

## CONTENTS OF SECTION 13-E

Paragraph	Subject	Page	Paragraph	Subject	Page
13-14	Back Window.....	13-67	13-15	Rear Compartment.....	13-69

### 13-14 BACK WINDOW ASSEMBLY (SERIES 40-60)

The back window assembly consists of a large one-piece glass which is secured in place in the body opening by a one-piece rubber channel. The back window garnish moldings consist of an upper garnish molding and a right and left side garnish molding. The moldings are secured in place by screws.

Two (2) different designs of back window reveal moldings are found on 1958 styles. The standard reveal moldings on the 40 series consist of a narrow one-piece upper reveal molding and a narrow lower right and lower left reveal molding. The upper reveal molding is secured by snap-in clips while each lower reveal molding is secured by snap-in clips and by a bolt and clip assembly at the outboard end of the molding. On the 60 series wide reveal moldings are used. These moldings consist of a one-piece upper molding, a lower right and left molding and a right and left corner reveal molding. The upper and lower reveal moldings are secured in place by bolt and clip assemblies, screws, and snap-in clips. The corner reveal moldings are secured by bolt and clip assemblies, and on 46R and 66R styles by bolt and clip assemblies and screws.

*NOTE: On all styles except 43 and 46R the wide back window reveal moldings are available for those bodies using the narrow moldings on a Special Order basis.*

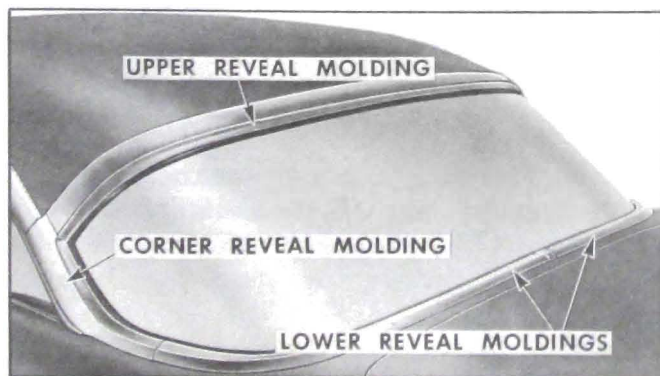


Figure 13-86—Back Window Reveal Molding Series 40-60

#### a. Removal and Installation of Back Window Garnish Moldings

1. On the 63 style, remove rear seat cushion, back, and belt finishing molding from each side of body.

2. Remove screws securing side and upper garnish moldings and remove moldings. *NOTE: Side garnish moldings must be removed prior to removing upper garnish moldings.*

3. To install, reverse removal procedure.

#### b. Removal and Installation of Back Window Reveal Moldings (Wide Moldings)

1. Remove back window garnish moldings.

2. Detach headlining across top of window sufficiently to gain access to upper reveal molding attaching nuts and sealing washers. Remove nuts and sealing washers.

3. Through access hole in side roof rail extension on 48-63-61 styles or at rubber channel on remaining styles remove nut and washer securing front end of corner reveal molding and remove molding. *NOTE: On special order styles also remove rear attaching nut and washer at rubber channel prior to removing molding.*

4. On 66R style remove roof drip molding rear scalp and remove screws securing corner reveal molding inside drip molding. Then inside body remove corner reveal molding front attaching nut and washer through access hole in body pillar and rear attaching nut and washer at rubber channel and remove molding.

5. On outside of body remove screw securing each end of upper reveal molding and remove molding.

6. From inside trunk remove nuts and sealing washers securing lower reveal moldings. Then with a suitable flat-bladed tool, carefully pry outboard portion of each lower molding, which is secured by snap-in clips, from body and remove moldings. *NOTE: Remove right molding with its integral escutcheon prior to removing left molding.*

7. To install, replace sealing washers where necessary, apply medium-bodied sealer to all screw attaching holes and to base of corner reveal attaching bolts where sealing washers are not used and reverse removal procedure.

**NOTE:** When installing outboard ends of lower reveal molding locate flange of molding between clips and body and firmly press moldings into position.

#### c. Removal and Installation of Back Window Reveal Moldings (Narrow Moldings)

1. Apply masking tape to painted surfaces adjacent to upper and lower reveal moldings.

2. Remove back window side garnish moldings.

3. At each corner of the back window remove nut and washer securing end of lower reveal molding.

4. Using a suitable flat bladed tool, carefully pry reveal moldings from body in the following order: lower right, lower left, then upper reveal molding.

5. To install, apply medium bodied sealer to base of each lower reveal molding attaching bolt and reverse removal procedure. **NOTE:** To

install upper and lower moldings, locate flange of molding between clips and body and firmly press molding into position. Remove protective covering.

#### d. Removal and Installation of Back Window Assembly—All Styles

1. Place protective covering over rear compartment and rear seat cushion and back if not previously removed.

2. Remove back window garnish and reveal moldings.

3. On inside of body, break seal between inner lip of rubber channel and pinchweld flange around perimeter of back window. Then carefully push upper edge of window assembly outward until lip of rubber channel is disengaged from pinchweld flange around perimeter of back window.

4. With aid of helper, remove assembly from window opening and place it on a protected bench. Remove rubber channel from glass.

5. Prior to installing back window clean original sealer from back window body opening and rubber channel. Check body pinchweld flange for any irregularities and correct if pres-

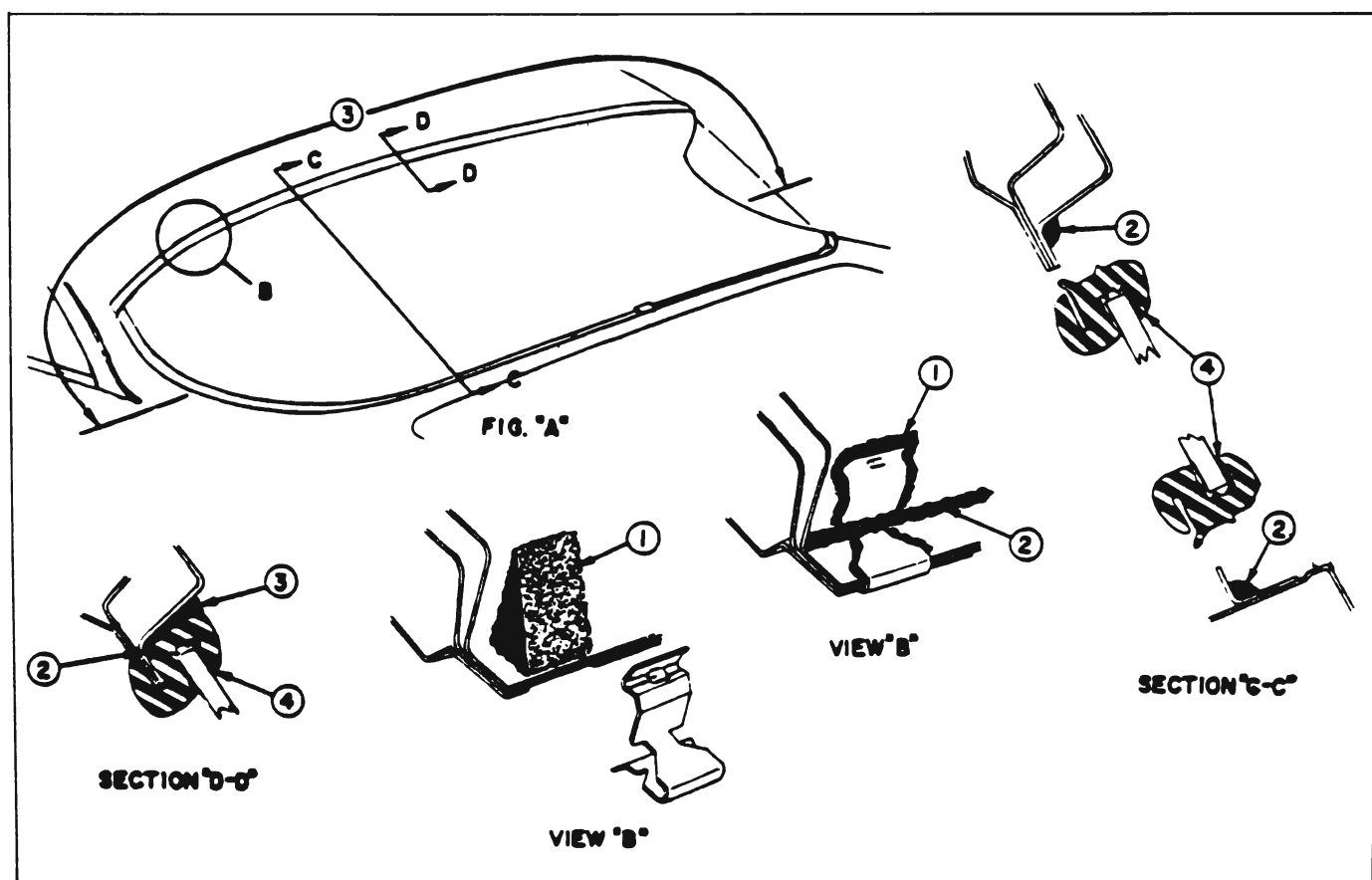


Figure 13-87—Installation of Back Window Assembly

ent. Check back window gutter and drain hoses for any obstructions and clean out if necessary.

6. Check installation of molding clips at pinchweld flange. If replacing clips apply medium-bodied sealer to open rabbet at clip locations as shown at "1" in Figure 13-87 and install clip.

7. Apply a continuous bead of medium-bodied sealer (approximately  $\frac{1}{4}$ " diameter) in corner of rabbet as shown at "2" completely around perimeter of back window opening. Seal is to be applied over reveal molding clips (See "2" View "B").

8. Assemble rubber channel to glass and insert strong cord in pinchweld cavity of rubber channel and bring both ends to bottom center of glass. Tie ends of cord together and tape to inside surface of glass.

9. With aid of helper, place back window assembly in body opening.

10. While helper is applying pressure to outside surface of glass, carefully pull ends of cord along bottom, up sides and across top of window to seat rubber channel over pinchweld flange around perimeter of glass.

11. Using a pressure-type gun flow completely fill opening between rubber channel and body across top and down each side of back window to a point approximately 8 inches below corner of window with medium-bodied sealer (see "3" Figure 13-87).

12. Install previously removed reveal moldings making certain sealer is applied to all screw attaching holes and to base of all molding attaching bolts where sealing washers are not used.

13. Apply approved weatherstrip cement between glass and outer lip of rubber channel completely around perimeter of glass (see "4" Figure 13-87 Section C-C).

14. Clean off excess sealer and cement, install all previously removed parts and remove protective covering.

### 13-15 REAR COMPARTMENT (SERIES 40-60)

The rear compartment lid hinges, guide, lid lock and cylinder assembly are similar to those used on previous styles. The following new features have been incorporated for the 1958 bodies:

1. The rear compartment weatherstrip is now secured in the compartment gutter rather than on the compartment lid.

2. The convertible style incorporates new link-type lid hinges to provide the required lid travel.

#### a. Removal and Installation of Rear Compartment Lid

The rear compartment lid is secured to the body by two hinges which incorporate torque rods to assist in opening the compartment lid and holding it in the "up" position when opened.

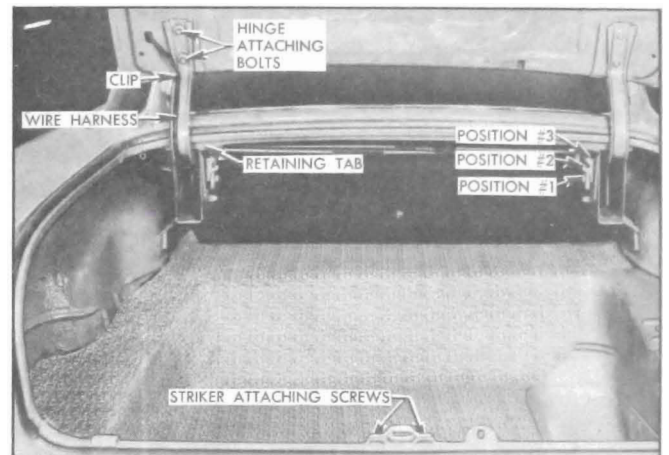


Figure 13-88—Rear Compartment

1. Open lid and place protective covering along edges of rear compartment opening to prevent damage to painted surface.

2. Disengage wire harness from clips on hinge and rear compartment lid inner panel and remove wire harness from lid.

3. Scribe location of hinge straps on lid inner panel.

4. Remove two (2) bolts shown in figure 13-87 securing lid to each hinge strap and with aid of helper remove rear compartment lid.

5. To install, position lid within scribe marks and reverse removal procedure.

#### b. Adjustment of Rear Compartment Lid

1. To adjust compartment lid forward or rearward, or from side to side in body opening, loosen both hinge strap attaching bolts and adjust lid as required; then tighten bolts.

2. To adjust compartment lid at hinge area up or down, install shims between lid inner panel and hinge straps as follows:

(a) To raise front edge of lid at hinge area, place shim between lid inner panel and forward portion of one or both hinge straps.

(b) To lower front edge of lid at hinge area, place shim between lid inner panel and rearward portion of one or both hinge straps.

3. To check lid lock bolt engagement with striker see "Rear Compartment Lid Lock Striker Engagement Check."

4. To adjust rear compartment lid guide, loosen attaching screws and adjust guide as required; then tighten screws. (See figure 13-88.)

#### c. Removal of Rear Compartment Lid Hinge

1. Place protective covering over body around upper portion of rear compartment opening and provide support for lid on side where hinge is to be removed.

2. Remove rear compartment trim at hinge area. If left hinge is being removed disengage wire harness from clip on left hinge.

3. Scribe location of hinge strap on lid inner panel and remove bolts securing hinge strap to lid.

4. With a suitable length of pipe disengage torque rod from notched retainer on inboard face of opposite hinge body.

*NOTE: Mark retainer notch before removing torque rod to insure rod is installed in same position.*

5. Disengage opposite end of torque rod from lower movable portion of hinge strap and remove rod.

6. On all styles except convertibles, bend back tab on inboard face of hinge box at retaining pin location, remove pin and then remove hinge from box.

7. On convertible styles bend back tab on inboard face of hinge box at each of two (2) retaining pin locations, remove pins, and then remove hinge from box.

#### d. Installation of Rear Compartment Lid Hinge

1. Position hinge in box and install hinge pin(s). Bend over retaining tab(s) to secure hinge pin(s).

2. Position hinge strap within scribe marks on lid inner panel and install attaching bolts.

3. Install "U"-shaped end of torque rod to hinge box making certain outer end of rod is engaged in hole in outboard face of hinge box.

4. Engage torque rod to lower movable portion of hinge and engage other end of rod to correct retaining notch on inboard face of opposite hinge box.

5. Check alignment of rear compartment lid and make any necessary adjustments.

6. Replace wire harness if left hinge was removed. Replace all previously removed trim.

#### e. Rear Compartment Torque Rod Adjustment

The torque rods on the rear compartment lid hinge assemblies can be adjusted to obtain the desired effort required to open and close the lid. With the torque rod set in Position No. 1, (see figure 13-88) a decrease in the effort required to open the lid can be had by adjusting the torque rod to Positions No. 2 or No. 3. A corresponding increase in the effort required to close the lid results from this adjustment. With the torque rod set in Position No. 3, a decrease in the effort required to close the lid can be had by adjusting the torque rod to Positions No. 2 or No. 1. A corresponding increase in the effort required to open the lid results from this adjustment.

#### f. Removal and Installation of Rear Compartment Lid Lock Cylinder

The rear compartment lid lock cylinder, lock and protector cover are located in the rear compartment lid. The rear compartment lid lock striker is located at the rear end panel.

The key-operated lock cylinder is held to the rear compartment lid outer panel by a sliding retainer located between the lid outer and inner panels.

1. Through opening in rear compartment lid

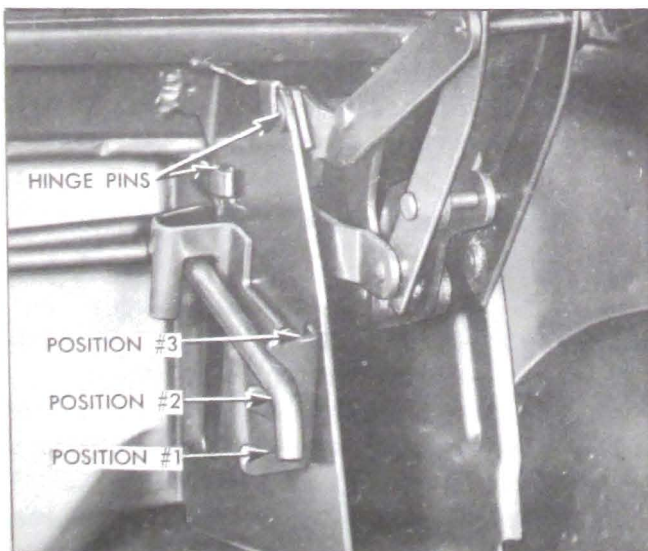


Figure 13-89—Rear Compartment Hinge—Convertibles

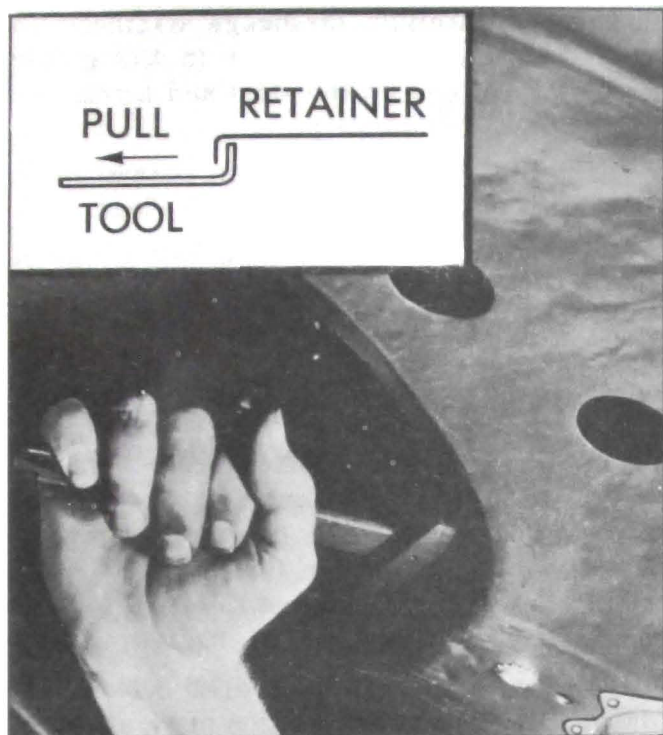


Figure 13-90—Lock Cylinder Removal

inner panel, insert suitable hooked tool to pull the lock cylinder retainer away from lock cylinder.

2. Remove lock cylinder and gasket from outer panel of rear compartment lid.

3. To install, reverse removal procedure after weathersealing lock cylinder gasket to lid outer panel.

#### g. Removal and Installation of Rear Compartment Lid Lock and Protector Cover

1. Remove rear compartment lid lock cylinder.

2. Remove two screws securing protective cover to lid inner panel.

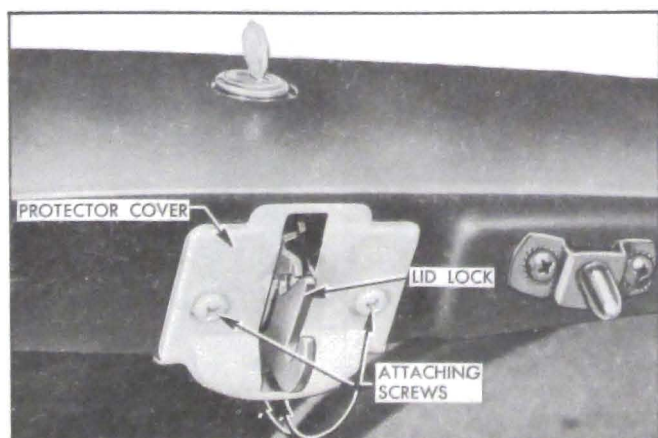


Figure 13-91—Rear Compartment Lid Lock and Protector Cover

3. Remove three screws securing lock and protective cover to lid inner panel and remove cover and lock.

4. To install reverse removal procedure. Apply medium-bodied sealer to surface of lid lock which contacts lid inner panel.

#### h. Removal and Installation of Rear Compartment Lid Lock Striker

1. Scribe location of striker and remove two attaching bolts; then remove striker. (See figure 13-88.)

2. To install, position striker within scribe marks and reverse removal procedure.

#### i. Adjustment of Rear Compartment Lid Lock Striker

1. To adjust striker up or down, loosen attaching bolts, adjust striker as required; then tighten bolts.

2. To adjust striker forward, loosen attaching bolts and install emergency spacer between striker and support; then tighten bolts.

#### j. Rear Compartment Lid Lock Bolts and Striker Engagement Check

To check the amount of engagement of the rear compartment lid lock bolt with the lock striker, use the following procedure:

1. Insert a small quantity of modeling clay at bottom of bolt slot and close lid with a moderate slam.

2. Open lid and check amount of engagement of lock bolt with striker as indicated by compression of the clay. With a ruler measure the distance between the base of the "U" in clay to base of "U" in lock bolt. This dimension should be  $\frac{1}{8}$ " to  $\frac{5}{32}$ ".

3. Adjust striker as required and/or if necessary use a spacer or shim for extreme

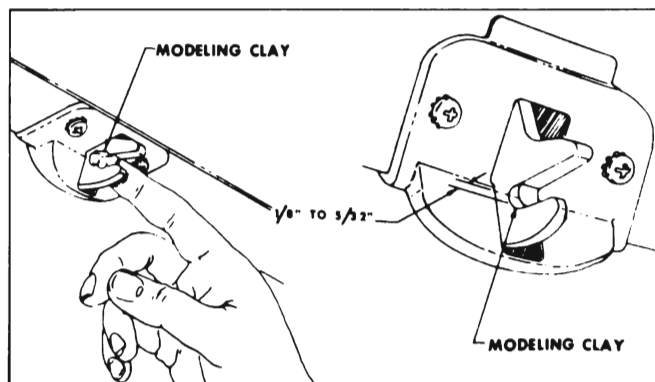


Figure 13-92—Checking Lid Lock Engagement

cases of lid lock striker adjustment. Tighten all attaching screws.

#### k. Removal and Installation of Rear Compartment Weatherstrip

The weatherseal at the rear compartment area is provided by a one-piece weatherstrip which is secured to the body by the compartment opening gutter. An additional seal is obtained by application of weatherstrip cement to the rear compartment gutter at the weld joint, as shown in Section "C-C" of figure 13-93, prior to installation of the weatherstrip.

1. Separate "butt" ends of weatherstrip at bottom of compartment opening. With flat-

bladed tool carefully disengage weatherstrip from its cemented foundation in the gutter across the bottom, up the sides and across the top. Remove weatherstrip.

2. Check gutter around rear compartment opening to make certain surface is clean.

3. Using a pressure-type gun, flow a bead of weatherstrip cement as shown at "1" in Section "C-C" along weld joint at lower inner corner of the rear compartment gutter, along the length of the weatherstrip indicated by "1" in Figure 13-93. In addition, brush a sufficient amount of weatherstrip cement from the upper joint of the rear quarter outer panel extension downward and across the bottom as shown at "3" in view "B" to aid in the retention of the weatherstrip. Apply this seal the length of the weatherstrip indicated by "3" in Figure 13-93.

4. Center weatherstrip at area between lid hinges using color identification mark at center of weatherstrip as guide.

5. Using a flat-bladed tool such as putty knife with rounded corners or a headlining inserting tool, insert weatherstrip into gutter across top, down sides and across bottom of rear compartment.

6. Trim ends of weatherstrip to form "butt" joint. Brush weatherstrip cement on both ends of weatherstrip and secure ends together as shown at "2" in View "B".

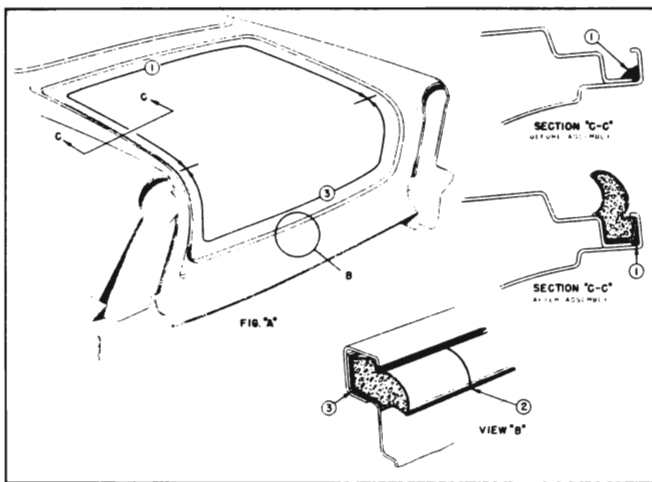


Figure 13-93—Rear Compartment Weatherstrip