

GROUP 0

INTRODUCTION – GENERAL INFORMATION

CONTENTS OF GROUP 0

Subject	Page	Subject	Page
Introduction.....	0-1	General Specifications.....	0-3
Warranty.....	0-2	Car and Engine Serial Numbers.....	0-3
1957 Car Models.....	0-3		

INTRODUCTION

This manual is divided into major *Groups*, *Sections*, and *Paragraphs* as explained below. The purpose of this arrangement is to bring related subjects closely together in accordance with the usual methods of performing service operations, and consequently to present information in a logical and easily understood order.

Any desired subject in this manual may be

located by reference to the alphabetical index at back of manual.

Any desired subject also may be located by turning to the first page of the appropriate *Group* where contents of the *Group* are listed. Where the *Group* is divided into *Sections* the first page of each *Section* lists the contents of the *Section*.

1. **GROUPS.** The manual is divided into the consecutively numbered major *Groups* shown on the preceding title page. To locate the first page of a *Group*, bend the manual until the black tab on first page of group can be seen in line with the *Group* title on title page.

The first page lists the contents of the *Group*.

2. **SECTIONS.** Large *Groups* are divided into appropriate *Sections* as shown on first page of the group. *Sections* bear the *Group* number and letters A, B, C, etc., in alphabetical order.

The first page of each *Section* lists the contents of section.

3. **PARAGRAPHS.** Each *Group* is divided into appropriate *Paragraphs* which are numbered consecutively within the *Group*, whether or not the group is divided into sections.

Paragraph titles and page numbers are listed on the first page of each *Section* if used, or on first page of the *Group* if sections are not used.

4. **SUB-PARAGRAPHS.** Where necessary for clarity, or distinction between models, *Paragraphs* are divided into appropriately titled *Sub-paragraphs*. These are usually lettered in alphabetical order within the paragraph.

5. **PAGE AND ILLUSTRATION NUMBERS.** Pages and illustrations are numbered consecutively within each *Group*. The number consists of the *Group* number followed by the *Page* or *Figure* number. Page numbers are printed in the upper *outer* corners of all pages. The small folio numbers at inner edges of pages are for printer's use only and are not used for reference in the manual.

6. **CROSS REFERENCES.** All references to information in other parts of manual are made by *Paragraph Number*, to avoid the necessity of first referring to the alphabetical index for location. Paragraph references are usually given in parentheses, for example: (par. 7-15) refers to the 15th paragraph in *Group 7*, "Chassis Suspension".

7. **SPECIAL TOOLS.** Unless otherwise indicated, all special tools identified by tool numbers in the manual are available through Kent-Moore Organization, Inc., and should be ordered through the Service Promotion Department, Oshawa, Ontario.

MANUFACTURER'S WARRANTY

It is expressly agreed that there are no warranties, expressed or implied, made by either the Dealer or the Manufacturer on the Buick motor vehicles, chassis or parts furnished hereunder, except the Manufacturer's Warranty against defective materials or workmanship as follows:

"The Manufacturer warrants each new motor vehicle, including all equipment or accessories (except tires) supplied by the Manufacturer, chassis or part manufactured by it to be free from defects in material and workmanship under normal use and service, its obligation under this warranty being limited to making good at its factory any part or parts thereof which shall, within ninety (90) days after delivery of such vehicle to the original purchaser or before such vehicle has been driven 4,000 miles, whichever event shall first occur, be returned to it with transportation charges prepaid and which its examination shall disclose to its satisfaction to have been thus defective; this warranty being expressly in lieu of all other warranties, expressed or implied, and all other obligations or liabilities on its part, and it neither assumes nor authorizes any other person to assume for it any other liability in connection with the sale of its vehicles.

"This warranty shall not apply to any vehicle which shall have been repaired or altered outside of an authorized General Motors Service Station in any way so as in the judgment of the Manufacturer to affect its stability and reliability, nor which has been subject to misuse, negligence or accident.

The Manufacturer has reserved the right to make changes in design or add any improvements on motor vehicles and chassis at any time without incurring any obligation to install same on motor vehicles and chassis previously purchased.

1957 CAR MODELS

Canadian Models	U.S. Models	Designation	Illustrated on Page No.
		SPECIAL—SERIES 40 (Dynaflow optional)	
4469	41	4-Door 6-Passenger Sedan	0-4
4439	43	4-Door 6-Passenger Riviera Sedan	0-4
—	46C	2-Door 6-Passenger Convertible Coupe	2-44
4437	46R	2-Door 6-Passenger Riviera	2-44
4411	48	2-Door 6-Passenger Sedan	4-22
—	49	4-Door 6-Passenger Estate Wagon	4-22
—	49D	4-Door 6-Passenger Riviera Estate Wagon	5-66
		CENTURY—SERIES 60 (Dynaflow standard)	
4669	61	4-Door 6-Passenger Sedan	5-66
4639	63	4-Door 6-Passenger Riviera Sedan	6-24
—	66C	2-Door 6-Passenger Convertible Coupe	6-24
4637	66R	2-Door 6-Passenger Riviera	7-24
—	69	4-Door 6-Passenger Riviera Estate Wagon	8-31
		SUPER—SERIES 50 (Dynaflow standard)	
—	53	4-Door 6-Passenger Riviera Sedan	8-32
—	56C	2-Door 6-Passenger Convertible Coupe	8-32
—	56R	2-Door 6-Passenger Riviera	9-42
		ROADMASTER—SERIES 70 (Dynaflow standard)	
—	73	4-Door 6-Passenger Riviera Sedan	9-42
—	73A	4-Door 6-Passenger Riviera Sedan	
—	76C	2-Door 6-Passenger Convertible Coupe	10-84
—	76R	2-Door 6-Passenger Riviera	10-84
—	76A	2-Door 6-Passenger Riviera	

GENERAL SPECIFICATIONS

Items	Series 40-60	Series 50	Series 70
Wheelbase	122"	127.5"	127.5"
Tread—Front	59.5"	59.5"	59.5"
Tread—Rear	59"	61"	61"
Length Over Bumpers	208.4"	215.3"	215.3"
Width Over-all at Widest Point	74.8"	77.6"	77.6"
Height Over-all, Roof to Road, at Curb Weight	58.5"	59.4"	59.6"
Front Overhang (C.L. of Wheels to Front of Bumper)	34.5"	34.7"	34.7"
Rear Overhang (C.L. of Wheels to Rear of Bumper)	52.0"	53.1"	53.1"

IDENTIFICATION NUMBERS

IMPORTED MODELS— The *vehicle identification number* (car serial number) is on a plate welded to the body on the left front door hinge pillar. The first digit of the number indicates the series: 4 for Series 40, 5 for Series 50, 6 for Series 60, and 7 for Series 70. Next is a letter designating year (A for '54, B for '55, C for '56, D for '57). The third prefix is a digit (1 through 8) identifying the plant at which the car was built. 1-Flint, 2-South Gate, 3-Linden, 4-Kansas City, 5-Wilmington, 6-Atlanta, 7-Framingham, 8-Arlington. The remaining group of six digits is the individual car serial number.

This number is also stamped on the top surface of the crankcase, just forward of the valve lifter cover on the left side, and constitutes the legal *engine number*. See Fig. 0-1.

Toward the right side on this same surface will appear the *production code number*, (stamped upside-down from the front of the engine) this number, along with the *vehicle identification number* (car serial number) will be used to identify the engine on product reports etc. The *production code number* does not constitute a legal engine number for registrations, titles, etc. A stamped 1/4" long dash (—) directly following the *production*

code number indicates a production engine with .010" O.S. pistons (US production only).

CANADIAN BUILT MODEL—Each vehicle carries a separate vehicle serial number plate and a body serial number plate. The vehicle serial number plate is affixed to the left front pillar post below the belt moulding line. This plate shows the model, vehicle, serial and engine number. The body serial number plate is mounted to the right of the air intake blister on the left hand side of the cowl. This plate shows the body serial number, body style, trim, paint and special body options.

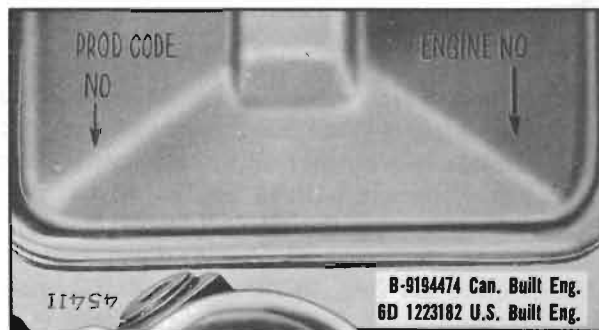
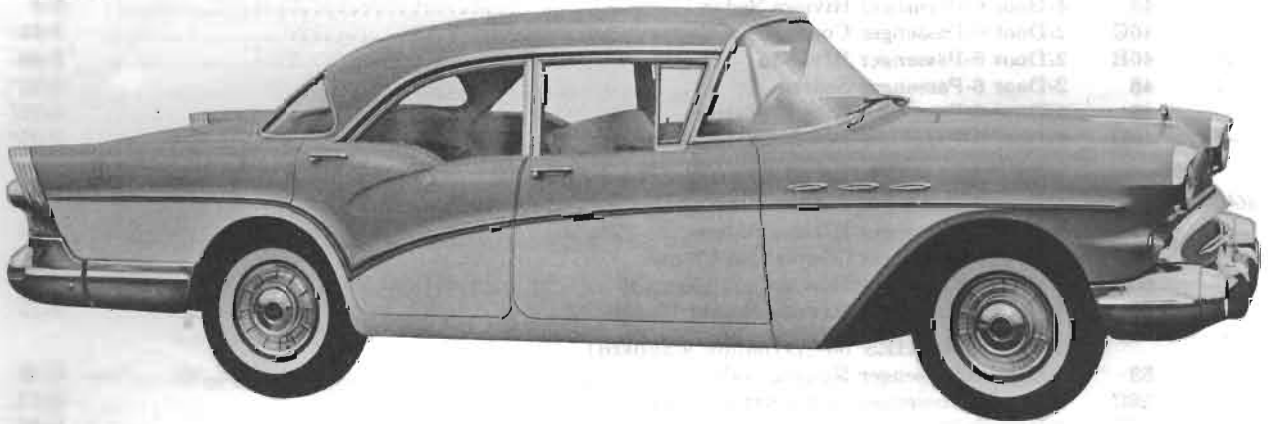
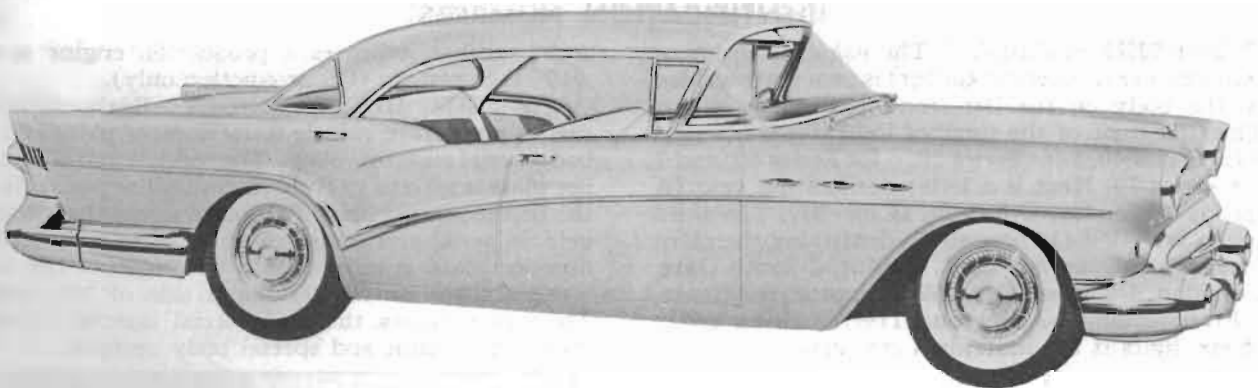


Figure 0-1—Engine and Production Code Numbers



Model 4469



Model 4439