

GROUP 13

BODY

SECTIONS IN GROUP 13

Section	Subject	Page	Section	Subject	Page
13-A	Introduction, Care of Body, Compounds, Body Mountings.	13-1	13-C	Windshield Wipers and Upper Instrument Panel.....	13-16
13-B	Doors and Compartment Lids.	13-6	13-D	Convertible Top Power System	13-18
			13-E	Power Seat Assembly.....	13-21

SECTION 13-A

INTRODUCTION, CARE OF BODY, COMPOUNDS, BODY MOUNTINGS

CONTENTS OF SECTION 13-A

Paragraph	Subject	Page	Paragraph	Subject	Page
13-1	Introduction.....	13-1	13-3	Cements and Sealing Compounds.....	13-4
13-2	Care of Body Finish, Plated Parts and Trim.....	13-2	13-4	Body Mountings.....	13-4

NOTES

13-1 INTRODUCTION

a. Scope of Group 13

Group 13 contains the most essential adjustment and replacement procedures required for ordinary servicing of bodies. These procedures may be performed by any competent mechanic without specialized experience in body repair work, and may be accomplished with tools and equipment usually available in a service shop.

In addition to the information contained in Group 13, attention is directed to the Service News which is published as required by the Fisher Body Service Division. Each issue of the Service News which relates to Buick body service is furnished to Buick Dealers through the Buick Service Department. All issues of the Service News should be kept on file for ready reference.

b. Fisher Body Number Plate

Complete identification of each body as required for service is provided by a plate riveted to the cowl on right side under the hood. See



Figure 13-1—Fisher Body Number Plate

figure 13-1. This plate should never be destroyed; if removed during body repairs it should be reinstalled in original location.

13-2 CARE OF FINISH

The *Style Number* and *Body Number* always should be furnished on every body parts order, and on warranty claims and Product Reports relative to bodies. In addition, the Trim Number or the Paint Number should be furnished if the subject relates to trim or paint.

The *Style Number* is a combination of the model year, car division number, and actual style number of body. In figure 13-1, 56 represents the model year 1956, 44 indicates Buick Division; 37 indicates the body style. An X following the style number indicates that body is equipped with electric power assists.

The *Body Number* is the production serial number of the body. The prefix G denotes the plant in which body was built.

The *Trim Number* furnishes the key to trim color and material. Trim colors and materials specified for each trim number are given in The Buick Master Parts List.

The *Paint Number* furnishes the key to the color combination and paint specifications. Paint colors and the manufacturer's numbers specified for each paint combination number are given in the Buick Master Parts List.

c. Body Style Numbers for All Models

In the service procedures given in Group 13 the last two digits of the body style numbers are used where necessary to distinguish differences between bodies. Body style numbers of all 1956 Buick models are as follows:

Model	Style	Model	Style
41	4469	69	1168977
43	4439	52	4519
46C	4467TX	53	4539
46R	4437	56C	4567X
48	4411	56R	4537
49	1168976	72	4719
63	4639	73	4739X
66C	4667X	76C	4767X
66R	4637	76R	4737X

13-2 CARE OF BODY FINISH, PLATED PARTS, AND TRIM

a. Care of Paint

Care should always be used in applying polishes. Particular care should be observed when the car is new and in using preparatory cleaners which have abrasive properties, regardless of age of the car, because unskilled application of such cleaners will result in rubbed through or thin spots in the paint. Polishes containing wax should be applied sparingly and thoroughly rubbed to remove any surplus. Excessive coatings of wax tends to cloud the paint and

destroy its natural lustre, besides acting as a binder for the accumulation of dirt.

When retouching of paint is required in service the paint should be the same number as specified for the paint combination number on the body number plate (fig. 13-1). Unless the new paint contains the same pigments in the same proportion as the original paint, the new paint may weather out off-color even though it appears to blend with the original paint at time of application.

b. Care of Chrome Plated Parts

Chrome plated parts rust or corrode because chemical agents present in road silt and traffic film seep through pores in the plating and attack the underlying base metal. A plating of nickel is applied underneath the chrome to seal the plating and protect the base metal.

Deterioration of chrome plated parts can be avoided by keeping the parts clean and by periodic application of a preservative which will aid in retarding seepage of destructive agents through the plating. Plated parts should be washed with clear water only, using a mild detergent such as Du Pont Car Wash when necessary. *Do not use scouring powders, cleaning compounds, or stiff brushes.* An application of Buick Chrome Preservative (group 8.800) every thirty days as instructed on the container will materially aid in maintaining lustre and retarding deterioration of chrome plated parts.

c. Cleaning Body Trim Fabric

The cloth headlining has a long nap, therefore, a great deal of care must be used to prevent damage when cleaning it.

A soft brush should be used to remove lint or threads from the headlining and the nap should be brushed in even strokes, *brushing from the rear to the front.*

It is not recommended that air under pressure be used for removing threads or lint because of the danger of matting and streaking the nap. If an air hose is used, however, it is extremely important to hold the nozzle at least 12 or 16 inches away from the headlining with a moderate air stream flowing *from the rear to the front.*

There are basically two different types of fabric cleaners on the market:

(1) Volatile cleaners such as naphtha, gasoline, carbon-tetrachloride and many others that are colorless liquids having great solvent powers for grease and oil.

(2) Alkaline cleaners, soaps and water mixtures which generally emulsify stains satisfactorily but at possible risk to the removal of the color or finish of the fabric.

For the removal of spots caused by ordinary soilage, we definitely recommend the "volatile type cleaner," preferably a mixture of carbon-tetrachloride and cleaner's naphtha.

Do not use any gasoline which is colored or which contains tetra-ethyl lead. Do not use volatile fire extinguisher fluid.

Careful application of the following procedure is a prime factor in obtaining satisfactory results and if followed closely will prevent the appearance of unsightly rings. The evident slowness of the method is compensated for by the superior results obtained.

1. Obtain, cut and fold several small swatches of clean cheesecloth or other fabrics suitable for this purpose.

2. With a brush or whisk broom of medium stiffness, brush away all loose particles of dirt and soil.

3. Immerse the small cloth swatch in cleaning solution, wring out and allow medium evaporation.

4. Place cloth on soiled spot several times, using no friction and only slight tapping pressure. This will pick up loose particles which are too embedded to be removed in the brushing operation. This operation should be repeated several times—in each instance using a new clean area of the cloth. Remember the solvent power of the cleaner does the work and only a minimum of pressure should be applied.

5. Immerse a new cloth in cleaner, wring out thoroughly, open and allow to evaporate until barely damp. Apply increased pressure and rub soil area in a backward and forward motion (not circular). The cleaning cloth should be reversed several times in this operation.

6. Immerse third cloth, wring out, allow evaporation and apply to both the soil and area surrounding same, using a light brisk motion.

7. Repeat brushing operation.

Some cushions and arm rests are padded with foam type rubber and if soaked with hydrocarbon cleaners, the rubber padding will absorb this cleaner and trouble may result.

On door trim pads, use the solvent sparingly, otherwise the solvent power of the cleaner is liable to dissolve the black waterproofing with which the board backing is impregnated and

bleed it out through the stitching or thread on to the trim pad fabric cover.

d. Cleaning Folding Top and Back Curtain—Convertible

Dirt spots can be removed with art gum or crude rubber. If dirt is heavily embedded in the fabric, the top should be thoroughly brushed with a whisk broom. In this brushing, a minimum of pressure should be applied to those areas of the assembly which cover metal bows of the top structure; heavy abrasion will disturb the surface of the material appreciably, causing an unsightly appearance. After brushing, the top should be washed thoroughly with a neutral soap suds and lukewarm water; a cloth or brush with soft bristles should be used. Generous quantities of clear water should then be applied over the surface to remove any trace of soap which might remain.

The flexible plastic window in the back curtain is susceptible to scratches and abrasions, therefore caution must be used in cleaning it. When removing road dust use a soft cotton cloth moistened with water and wipe cross-wise of the window. **DO NOT USE A DRY CLOTH.**

If further cleaning is required, use cold or tepid (not hot) water and mild neutral soap suds. After washing rinse with clear water and wipe with a slightly moistened clean soft cloth.

CAUTION: Never use solvents or cleaners of alcoholic or other chemical content as these liquids may have a deteriorating effect on the plastic window.

e. Care and Cleaning of Leather Seats

Care of genuine leather is a relatively simple but important matter. If dirt accumulates on the surface, this generates into a hard grit which under pressure will cut the finish and cause the leather to crack or bleed color. The surface should be gone over occasionally with a dry cloth and if dirt should accumulate, the following cleaning instructions should be used:

1. Using lukewarm water and a neutral soap, work up a thick suds on a piece of cleese cloth and apply it to leather surface.

2. Go over leather surface again using only a damp cloth and no soap.

3. Wipe leather dry with a soft cloth.

NOTE: Polishes and cleaners used for auto body finishes, volatile and other clear cleaners, naphtha, furniture polishes, oils, varnishes or household cleansing and bleaching agents should never be used on leather seats.

13-4 CEMENTS—SEALERS**13-3 CEMENTS AND SEALING COMPOUNDS**

Many different compounds are used as cements and sealers in the construction of a body, and many different brands are available for service use. It would not be practical to stock all of the compounds used, or to discuss here all of the brands available.

The "3-M" compounds listed here have been found satisfactory for the applications indicated and are recommended for the cementing and sealing operations required in servicing a body. They are manufactured by the Minnesota Mining and Manufacturing Company and are generally available through automotive supply houses.

Due to the adhesive properties of these compounds, application with a stick, screwdriver, or similar tool is always unsatisfactory. This method of application is not only wasteful but usually results in smeared painted surfaces and upholstery which are difficult to clean. Sealing guns should be used for application of these compounds. For light bodied compounds a small trigger gun is satisfactory. For heavy bodied compounds, a larger gun with flow adjustment should be used.

a. 3-M Weatherstrip Adhesive

This cement is a rubber base adhesive developed especially for bonding rubbers together or to metal surfaces. It may be used for cementing door and rear compartment lid weatherstrips in place, sealing around windshield and rear window glasses, etc. Can be applied with the small pressure gun or with a stiff bristle brush.

b. 3-M Trim Cement

This colored adhesive is used for cementing trim fabrics to metal panels, trunk linings, floor carpets, etc. It is especially developed to adhere to fabrics without bleeding through to cause discoloration. This cement has the "quick tack" and "wet" strength required to permit cementing the fabrics in place quickly and securely. It may be used to cement "Soundsorber" to the deadener pad on the underside of the roof panel.

c. 3-M Felt Pad Adhesive

This is a heavy black cement used for attaching all types of deadener pads to metal panels.

d. 3-M Convertible Top Sealer

This medium bodied sealer, available in black or tan, is used strictly for sealing the seams

and tacking areas of the top fabric on convertible coupes. Should be applied with the small trigger type sealing gun.

e. 3-M Autobody Sealer

This semi-heavy black compound is a flexible rubber sealer for general use in sealing welded seams inside the body. It is also used for sealing body moldings. It is non-drying and its ability to stay in place without flowing makes this sealer useful for many purposes.

f. 3-M Underseal

This sealer is a sprayable black coating for use on metal surfaces underneath the body. It is especially useful for sealing all welded seams and crevices against entrance of dust and water. It also acts as an insulator against noise and extremes of temperature.

g. 3-M Caulking Compound

This compound is a pliable, waterproof, non-shrinking, non-hardening putty-like compound used for sealing out moisture and dust in seams and crevices. Can be molded by hand to any shape or form for easy application. Ideally suited for hard to get at places on the steel underbody. Can be formed or rolled into "pig tails" and pressed down into crevices with the fingers to make a satisfactory seal.

h. 3-M Fluid Line Sealer

This sealer is used for sealing all pipe connections in the Hydro-Lectric power system. It is available in 1/4 pint glass containers.

13-4 BODY MOUNTINGS

At each *closed body* mounting point a rubber shim is placed between the body and frame, a rubber insulator washer is placed under the frame side rail flange or hanger, and flat steel washers and a tubular spacer limit compression of the rubber parts to a predetermined amount as the body bolt is tightened. See figures 13-2 and 3. This form of mounting eliminates metal-to-metal transmission of road and chassis noise into the body.

At each *convertible coupe* mounting point a solid composition shim is placed between the body and the frame, and a flat washer and bolt anchors the body to the frame. See figure 13-2 and 3.

In addition to the parts shown in figure 13-2 and 3, steel shims are added as required at individual mountings to compensate for variations in body and frame in order to insure a firm

mounting without distortion of body. Whenever it becomes necessary to remove body mountings, care must be taken to reinstall all of the mounting parts and steel shims in their exact original positions.

Closed bodies should not be re-shimmed to correct distortion of door openings. These openings should be shaped as required by the use of body jacks. The body should rest firmly on all mountings before bolts are tightened and steel shims should be added where body does not contact a mounting. Shims for this purpose are furnished under group 9.023.

Convertible bodies may be re-shimmed in

cases where door locks do not latch securely after door is properly adjusted in body opening (par. 13-7). In such cases, shims placed under the ends of body will close in the body door opening sufficiently to insure proper latching of door locks.

When body bolts are tightened use a torque wrench to tighten all bolts uniformly to 25-30 ft. lbs. torque. The specified torque is very necessary to insure proper compression of convertible body mounting shims, and to insure tightening against the spacers in closed body mountings. Excessive tightening must be avoided as distortion of mountings will result.

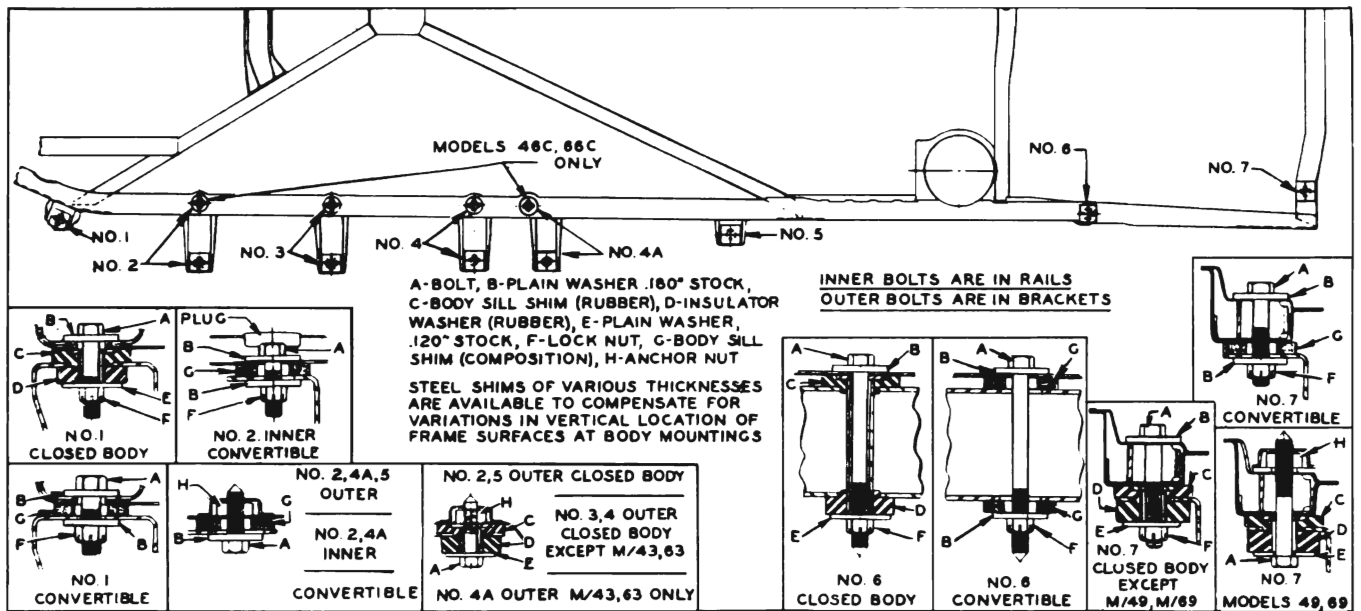


Figure 13-2—Body Mountings—Series 40-60

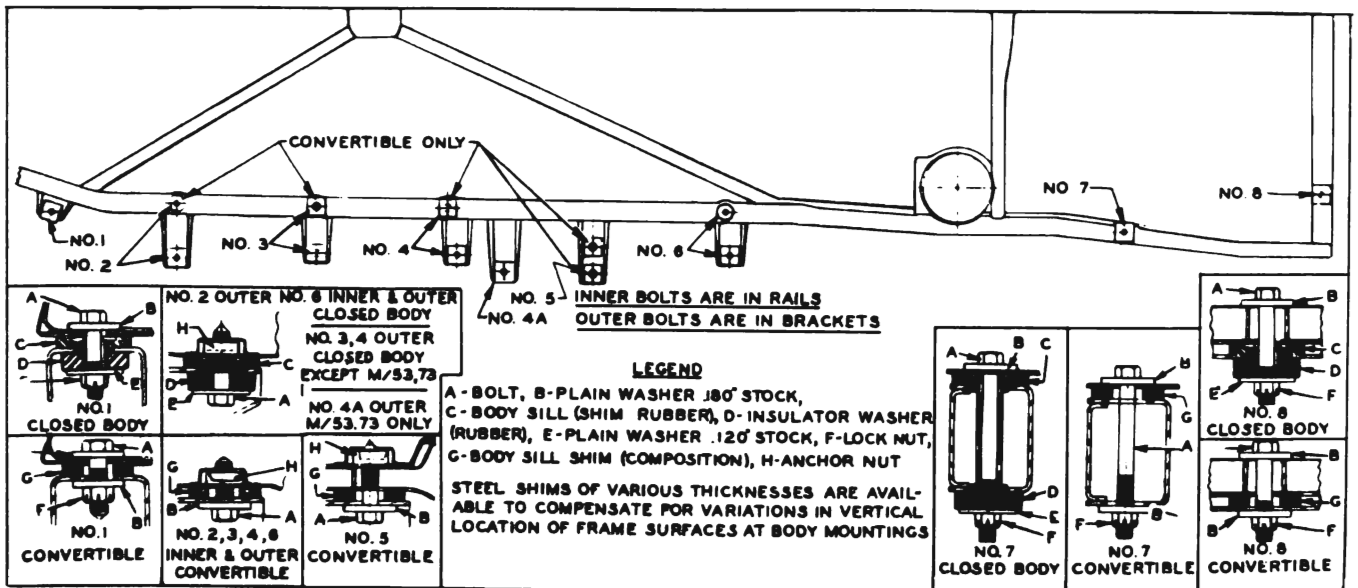


Figure 13-3—Body Mountings—Series 50-70