

DIMENSIONAL DRAWINGS

The following reproductions of drawings are for the purpose of checking parts which may be bent through accident.

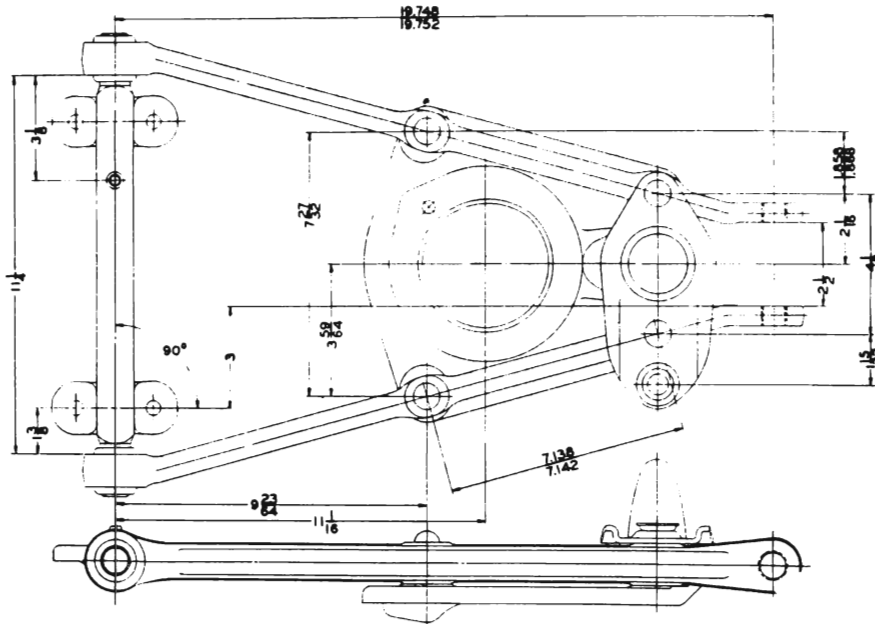


Fig. 15-1. Lower Control Arm, Left (Right Opposite) All Series

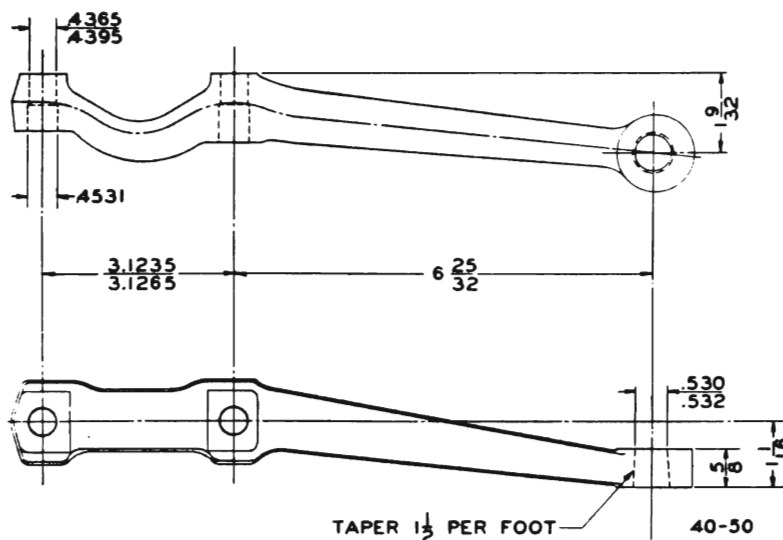


Fig. 15-2. Steering Arm, Series 40-50 (Right side shown, left opposite)

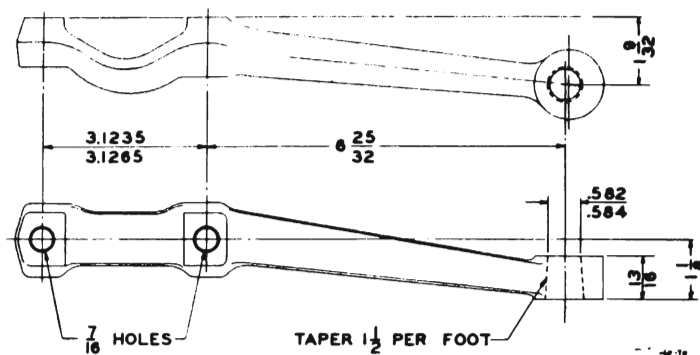


Fig. 15-3. Steering Arm, Series 60-70 (Right side shown, left opposite)

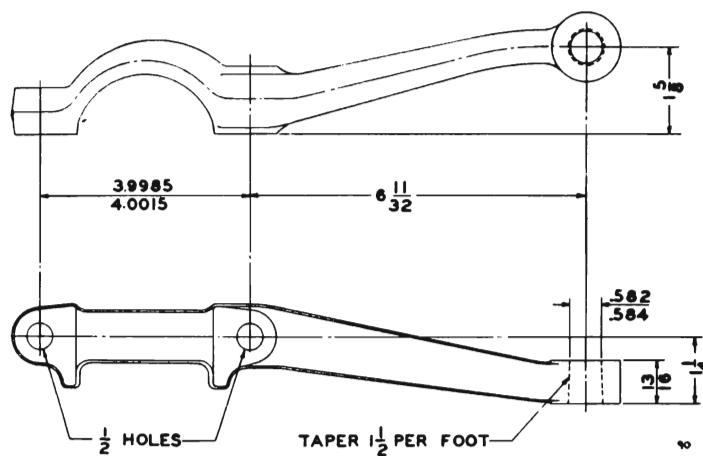


Fig. 15-4. Steering Arm, Series 90, Left (Right opposite)

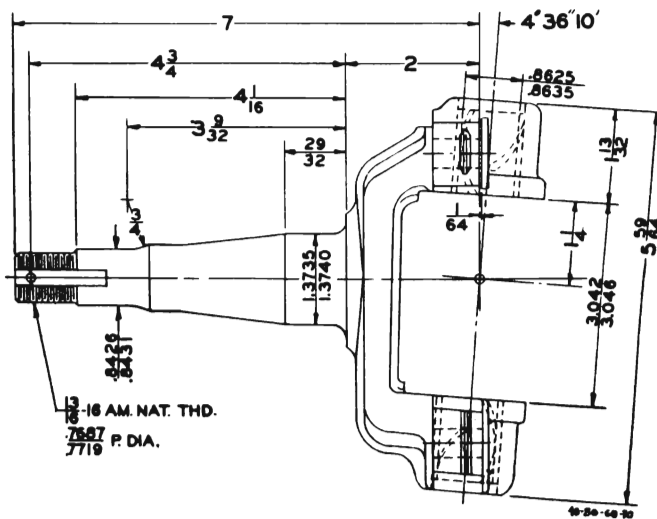


Fig. 15-5. Steering Knuckle, Left (Right opposite) Series 40-50-60-70

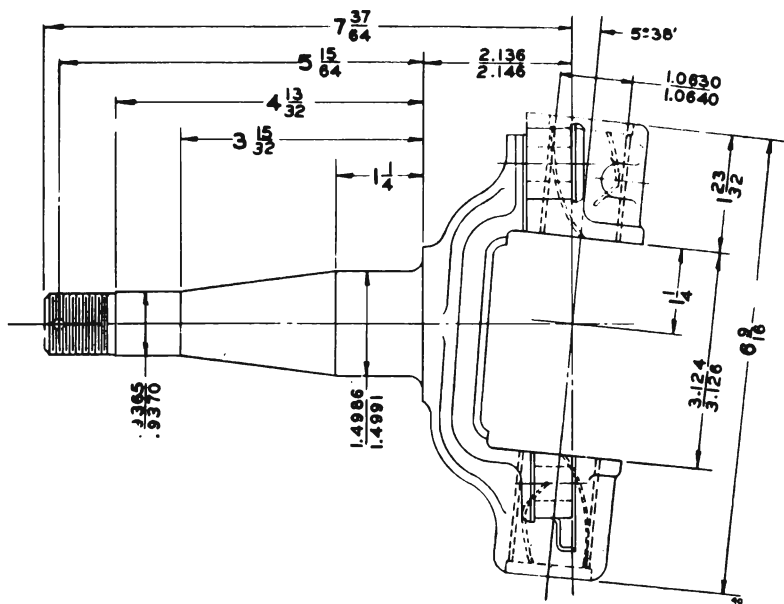


Fig. 15-6. Steering Knuckle, Left (Right opposite) Series 90

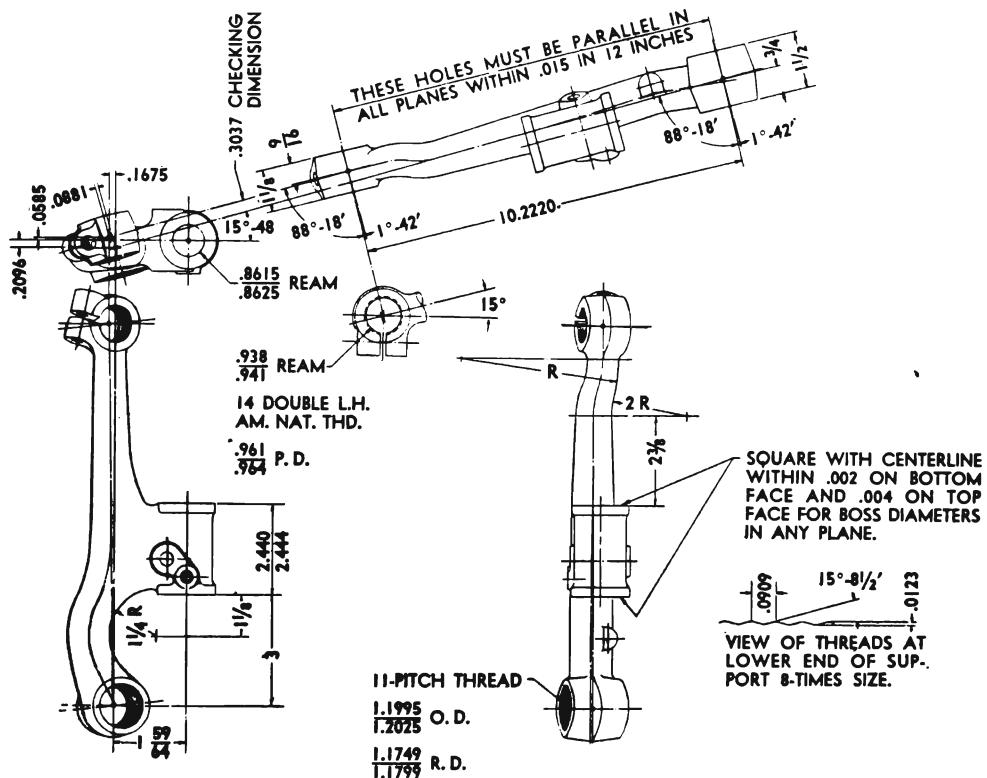


Fig. 15-7. Steering Knuckle, Left (Right opposite) Series 40-50

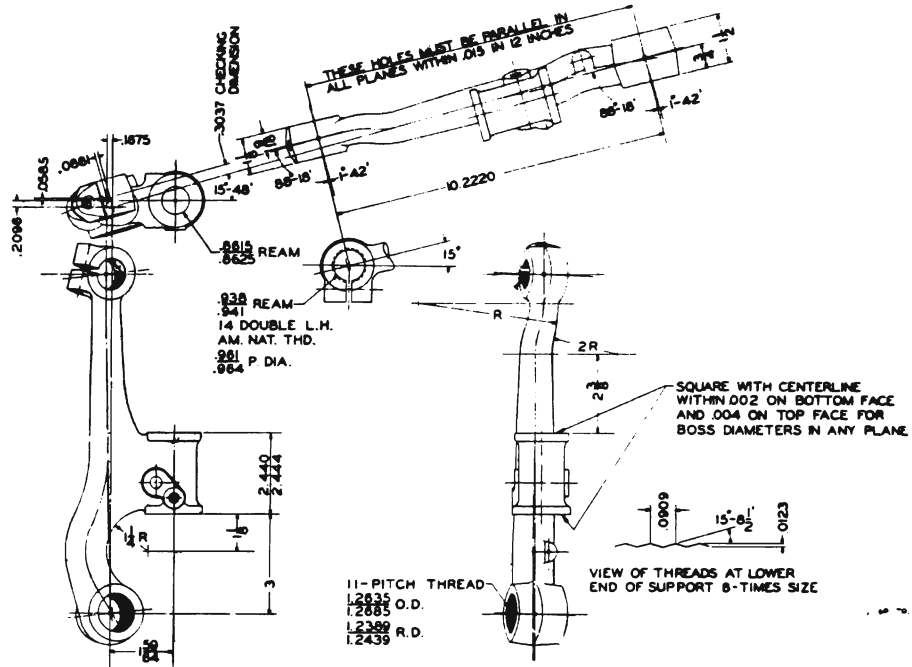


Fig. 15-8. Knuckle Support, Left (Right opposite) Series 60-70

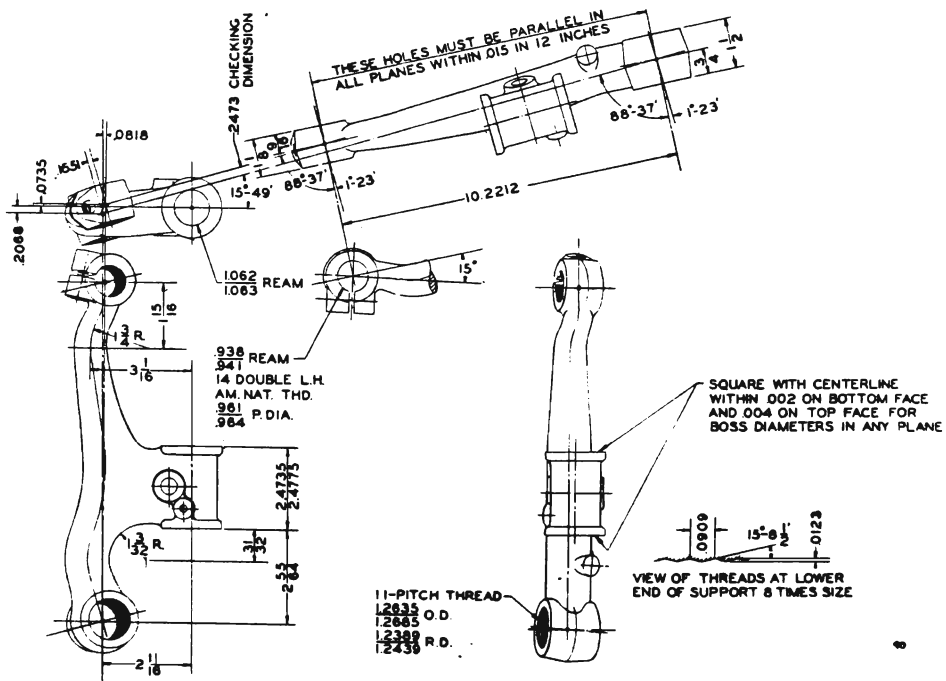


Fig. 15-9. Knuckle Support, Left (Right opposite) Series 90

Tightening Specifications—Torque Wrench Reading

The following table showing a few bolt applications will give a good idea as to how tight bolts should be set up. These can be checked with any type of torque measuring wrench by referring to the chart.

WHERE USED	Bolt Size	Torque ft. lbs.
Oil Pan Drain Plug	30-35
Lower Crankcase	5/16	10-15
Flywheel to Crankshaft.....	45-55
Piston Pin Clamp Bolt.....	5/16	25-30
Main Bearing Bolt.....	120-130
Master Brake Cylinder to Frame.....	5/16	20-25
Rocker Arm Bracket Cap Screw.....	3/8	30-35
Timing Chain Cover	3/8	15-20
Water Pump to Cylinder.....	3/8	25-30
Manifold Studs	3/8	25-30
Transmission Support	3/8	20-25
Connecting Rod (Series 40-50).....	3/8	45-50
Cylinder Head Bolt	7/16	65-70
Spark Plugs	14 M/M	22-28
Connecting Rod (Series 60-70-90).....	7/16	60-65
Lower Control Arm Shaft.....	7/16	45-50
Shock Absorber—Rear	9/16	45-50
Shock Absorber to Frame—Front	1/2	60-65
Wheel Bolts	1/2	60-65
Body Bolts (All Series).....	7/16-9/16	25-30
Pitman Arm Nut	70-75
Balancer Retaining Bolt	100-110
Brake Anchor Nut Front and Rear Brake Assembly	80-90
Rear Axle Cover	3/8	10-15
Differential Carrier to Rear Axle Housing.....	3/8	20-25
Backing Plate to Rear Axle Housing.....	7/16	35-40
Spring Seat to Rear Axle Strut Rod.....	1/2	65-70
Spring Seat to Rear Axle Strut Rod.....	3/8	40-45
Strut Rod to Strut Rod Bracket.....	1/2	65-70
Shock Absorber to Rear Axle Brake Backing Plate....	9/16	65-70
Torque Tube to Differential Carrier.....	7/16	50-60
Brake Cylinder to Backing Plate (In Brake Assy.)....	5/16	15-20
Brake Drum to Rear Axle Shaft	5/16	15-20
Front Brake Backing Plate to Steering Knuckle.....	7/16	45-50
Steering Knuckle Support Pinch Bolt.....	3/8	35-40
Shock Absorber Pinch Bolt.....	3/8	25-30
Rubber Bumper to Spring Seat Front Suspension....	3/8	5-10
Battery Ground Strap to Crankcase.....	15-20
Steering Connecting Link Clamp Bolt.....	3/8	35-45
Steering Gear to Frame Bolt.....	55-60

1942 BUICK SHOP MANUAL INDEX

	Page		Page		Page
Accessories	14-1	Stromberg Choke Control	6-46	Cylinder Heads	6-6
Car Heaters	14-1	Operation and Adjustment	6-46	Gaskets	6-6
Radios	12-68	Choke Release	6-48	Tightening	6-6
Air Cleaner	6-63	Cold Engine	6-46	Diagnosis of Rear Axle Noise	4-13
Air Inlet	6-63	Thermostat Setting	6-50	Differential Assembly	4-5
Intake Silencer	6-63	Warm Engine	6-47	Differential Side Bearing	4-9
Service Information	6-63	Warming-Up Period	6-47	Backlash Adjustment	4-10
Air Intake (See "Air Cleaner")		Carburetor Mounting Gasket	6-39	Installation and Adjustment	4-9
Antennae	12-68	Carter Carburetor	6-51	Dimension Drawings	15-1
Anti-Freeze Solutions	6-32	Caster Angle Adjustment	9-9	Dimensional Limit	
Axle—		Cement and Sealers	1-61	Chart... Back of Lubrication Chart	
Bearings	4-1	Center Partition Electric		Direction Signal Lamps	12-36
End Clearance	4-1	Window Regulator	1-39	Bulb Replacement	12-38
Noise	4-13, 4-16	Charge Indicator	12-43	Direction Signal Switch	12-33
Shaft Oil Seals	4-5	Chassis Sheet Metal	11-1	Adjustment	12-36
Shaft Removal	4-1	Chassis Springs	3-5	Distributor	12-22
Back Window Seal	1-19	Identification	3-6	Distributor Installation	12-24
Battery	12-50	Front Trim Dimensions	3-7	Distributor Shaft	12-23
Bearings—		Rear Trim Dimensions	3-6	Door Alignment	1-15
Axle	4-4	Overload Special Rear Springs	3-6	Door Construction	1-19
Pinion	4-4	Front Spring Installation	3-7	Door Checks	1-24 & 1-47
Belt Molding Installation	1-32	Cigar Lighter	12-50	Door Hinges	1-23
Body Mounting	1-15	Chassis Suspension	3-1	Door Locks	1-23
Body Parts Removal—		Circuit Breaker	12-31	Inside Safety Lock	1-22
Operation No. 1 to 22	1-25-36	Service Suggestions	12-32	Remote Control	
Body Service	1-42	Circuit Diagrams	12-50	Mechanism	1-22 & 1-48
Body Shimming	1-16	Cleaning Fluids	1-62	Door Rubber Weatherstrip	1-24
Brakes	5-1	Clock	12-43	Door Straightening	1-44
Adjustment Chart	5-5	Clutch	6-67	Door Striker Plate	1-21 & 1-47
Adjustment, Major	5-6	Chatter	6-76	Door Ventilators	1-48
Adjustment for Wear	5-4	Clutch Installation	6-74	Adjustment & Service	1-48 & 1-49
Balance	10-6	Clutch Removal	6-73	Division Channel	1-48
Bleeding	5-2	Coil Spring Pressure Plate	6-70	Door Window Glass—	
Drums	5-3	Disassembly and Assembly	6-70	Front and Rear	1-27-29
Lining	5-9	Crown Spring Pressure Plate	6-68	Dovetail Bumper Assy	1-22 & 1-47
Master Cylinder	5-1	Disassembly and Assembly	6-69	Drop Center Rims	10-2
Parking Brake	5-8	Drag or Failure to Release	6-76	Electrical Specifications	12-93
Pedal Adjustment	5-7	Driven Plate	6-67	Electrical System	12-1
Reboring Drums	5-9	Driven Plate Servicing	6-68	Engine	6-1
Shoes	5-4	Low and Reverse Gear Clash	6-77	Engine Cooling System	6-28
Specifications	5-10	Noise	6-75	Engine Lubrication System	6-25
Wheel Cylinder	5-2	Pedal Lash	6-72	Engine Oiling System	6-24
Breaker Point Opening	12-24	Pedal Pressure	6-74	Engine Mtgs. and Identification	6-17
Bumpers	2-1	Pedal Return Spring	6-72	Adjustment	6-19
Camber	9-10	Pressure Plate Assy.—Service	6-70	Installation Chart	6-18
Camshaft	6-12	Pressure Plate Release Levers	6-70	Engine Roughness	6-22
Camshaft Run-out Check	6-16	Release Bearing	6-73	Engine Specifications	6-78
Car Roughness	10-5	Release Bearing Support	6-73	Engine Ventilating System	6-27
Carburetor	6-38	Release Linkage	6-71	Exhaust Manifold	6-34
General—		Specifications	6-83	Exhaust Pipe—Compound Carb.	8-4
Throttle Rod Adjustment	6-39	Commutator Cleaning	12-6	Fan	6-29
Idle Adjustment	6-39	Compound Carburetion	6-38	Fan Belt	6-29
Carter Carburetor	6-51	Compression Check	6-19	Fenders, Front	11-1
Float Circuit	6-51	Connecting Rods	6-12	Front Fender Extensions	11-1
High Speed Circuit	6-53	Replacement Rods	6-12	Fenders, Rear	11-2
Identification	6-51	Control Lever	7-4	Flywheel	6-20
Low Speed Circuit	6-52	Control Shaft	7-5	Flywheel Housing	6-20
Metering Rod Adjustment	6-54	Convertible Power Operated Top	1-37	Alignment	6-21
Pump or Acceleration Circuit	6-55	Conv. Coupe Door Adjustment	1-49	Flywheel Teeth	12-5
Pump Adjustment	6-56	Cooling System	6-28	Frames	2-1
Tools	6-62	Anti-Freeze Solutions	6-32	Convertible Frames	2-1
Carter Choke Control	6-56	Capacity	6-33	Frame Center Line	2-3
Disassembly and Assembly	6-60	Draining	6-31	Frame Service Information	2-4
Fast Idle Adjustment	6-57	Rust Preventive	6-31	Frame Alignment with Axle	2-4
Unloader Adjustment	6-57	Counter Gear	7-8	Fresh Air Ventilator	11-3
Stromberg Carburetor	6-42	Cowl Ventilation	1-16	Front Suspension	3-1
Description	6-43	Crankcase Ventilation	6-27	Front Wheel Alignment	9-7
Disassembly and Assembly	6-49	Crankshaft	6-6	Fuel Feed Lines	8-1
Identification	6-42	Curb Weight	9-7		
Operation and Adjustments	6-43 to 6-45	Current and Voltage Regulator	12-15		

INDEX—Continued

	Page		Page		Page
Fuel Pump	6-65	Oil Pump	6-26	Seat Cushions	1-25
Fuel Filter	6-65	Oil Pump Screen	6-26	Front	25
Fuel Pump Pressures.....	6-66	Oil Recommendations	6-24	Selector Control Rod.....	5
Replacement Fuel Pumps.....	6-66	Optional Gear Ratios.....	4-1	Serial Number Plate Location..	1-11
Vacuum Unit Test.....	6-66	Oversize Production Engines....	6-22	Sheet Metal Mtg., Front End....	11-1
Fuel Tank and Exhaust System...8-1				Shift Control	7-4
Fuel Tank	8-1	Paint Conditioning on New Cars..	1-62	Service Information	7-7
Fuel Tank & Exh. Specifications..	8-4	Parking Brake	5-8	Shift Rods	7-7
		Pinion or Pinion Bearing		Shipping Chain	2-1
Gasoline Gauge	12-49	Replacement	4-10	Shock Absorbers—	
Generator	12-14	Pinion Setting	4-6	Calibration Changes	3-5
Generator Bearings	12-15	Adjustment Chart	4-7	Front	3-2
Generator Fan, Pulley and Mtg..	12-14	With no setting gauge available.	4-8	Rear	3-3
Belt Adjustment	12-14	Pistons	6-8	Reg. Production Calibrations..	3-5
Pulley Balance	12-14	Fits	6-8	Service	3-3
Glove Compartment Door.....	1-16	Fitting Chart	6-9	Solenoid Relay	12-5
Lock	1-17	Piston Pins	6-11	Spark Plugs	12-30
Glove Comp. Light and Switch..	12-33	Piston Rings	6-11	Specifications—Detailed:	
Gravel Deflectors	2-3	Fits	6-11	Brake	5-10
		Service Piston Rings.....	6-11	Chassis Suspension	3-10
Headlining	1-34	Pressure Plate	6-68	Electrical	12-93
Heat Control	6-35	Propeller Shaft	4-11	Engine.....	6-78 to 6-83
Heat Control Thermostat and		Assembly	4-11	Frame	2-5
Adjustment	6-36	Balance	4-13	Fuel Tank & Exhaust System...8-4	
Heater—Series 90	14-1	Straightening—		Lubrication	
Heat Valve Anti-Rattle Spring		Fixture	4-11	Chart....	Insert at back of book
Adjustment	6-36	V-Blocks or between centers.	4-12	Rear Axle	4-17
High Voltage Check.....	12-21	Push Rods	6-13	Steering	9-12
Hinge Adjustment (Door).....	1-43			Tightening..	Insert at back of book
Hood and Front Door Alignment..	1-46	Radiator	6-28	Trans. and Universal Joint....	7-16
Hood Adjustments	11-3	Flushing	6-31	Wheels and Tires.....	10-7
Hood Hinge	11-2	Radiator Grille	11-1	Springs	3-5
Hood Top Panel	11-3	Radiator Ornament	11-1	Stabilizer	3-7
Horn Button	12-46	Radios	12-68	Bracket Bushing	3-7
Horn Relay Adjustment.....	12-49	Installation	12-74	Links	3-8
Horns	12-47	Service	12-81	Starter Operation	12-1
Adjustment	12-47	Radius Rod	3-9	Starter Pinion Clash	12-8
		Rear Axle	4-1	Starter Pinion—	
Ignition Coil	12-26	Bearings	4-1	Delayed Disengagement	12-8
Service Instructions	12-26	End Clearance	4-1	Starter Pinion Teeth	12-5
Ignition Distributor	12-22	Gear Service	4-14	Starter Ring Gear	6-20
Ignition Service—		Housing Alignment Tool.....	4-14	Starter Service	12-7
Radio Equipped Cars.....	12-26	Lubrication	4-5	Starting Motor	12-5
Ignition Switch	12-29	Noise	4-13, 4-16	Starting Procedure	6-42
Instrument Lamp Switch.....	12-32	Optional Gear Ratios.....	4-1	Steering	9-1
Intake Manifold	6-34	Service Gears	4-5	Steering Column Bracket	9-5
Intake Silencer	6-63	Shaft Removal	4-1	Steering Gear	9-1
		Specifications	4-17	Adjustments	9-1
King Pin Inclination.....	9-10	Struts	4-5	Steering Gear Mast Jacket.....	9-6
Knuckle—Check for Straightness.	9-10	Rear Compartment Lid Lock.....	1-25	Steering Geometry	9-11
		Rear Quarter Window.....	1-33	Steering Specifications	9-12
Leaks, Water and Dust...1-52 to 1-61		Regulator Service Information..	12-20	Steering Wheel Spoke Location..	9-6
License Brackets	2-3	Release Bearing	6-73	Stop Light Switch.....	12-33
Front	2-3	Remote Control		Stromberg Carburetor	6-42
Rear	12-43	Mechanism	1-22 & 1-48	Synchronizing Drums	7-9
License Plate Lamp.....	12-41	Reverse Idler Gear.....	7-8		
Lighting Control	12-31	Servicing Special Grooved Pins.	7-8	Tail, Stop and Direction Signal	
Control Switch	12-31	Ride Service Information.....	3-9	Lamps	12-38
Foot Selector Switch.....	12-31	Rims	10-2	Temperature Gauge	6-31
Lower Control Arms.....	3-1	Ring Gear Replacement.....	4-8	Thermo Circuit Breaker.....	12-31
Lubrication		Rocker Arms	6-13	Thermostat	6-30
Chart.....	Insert at back of book	Rocker Arm Shafts.....	6-13	Tie Rods	9-6
Main Bearings	6-7	Roof Bows	1-51	Adjustment	9-6
Oil Seal Installation.....	6-7	Roughness, Engine	6-22	Tightening Specifi-	
Manifolds and Heat Control.....	6-34	Roughness, Car	10-5	cations.....	Insert at back of book
Manifold Assembly	6-35	Rust Preventive	6-31	Timing Chain Cover.....	6-6
Manifold Gaskets	6-35			Timing Chain and Sprockets....	6-16
Map Light and Switch.....	12-33	Sealed Beam Headlamps.....	12-39	Timing Ignition—	
Master Cylinder	5-1	Aiming	12-42	Without Synchroscope	12-24
Muffler and Exhaust System.....	8-1	Construction	12-40	With Synchroscope	12-25
		Replacement	12-41	For Octane Rating.....	12-26
		Sealing Guns	1-61	Timing, Initial	12-23
Oil Filter	6-27	Seat Adjuster	1-25	Tire Chains	10-4
				Tires	10-2

INDEX—Continued

	Page		Page		Page
Interchanging of Tires.....	10-3	Bearing	6-73	Water Pump and Fan Assembly..	6-28
Lead Wear	10-2	Trans. Service Information.....	7-14	Water Temperature Gauge.....	6-31
Tire Pressure	10-2	Transmission Snap Rings	7-14	Wheel Alignment Chart.....	9-8
Toe-In Adjustment	9-10	Transmission Specifications	7-16	Wheel and Tire Balance.....	10-4
Tolerance & Clearance		Transmission Support Mounting.....	7-11	Brake Drum Balance.....	10-6
See back of Lubrication Chart		Turning Circle	9-11	Car Roughness Analysis.....	10-5
Top, Care of Convertible.....	1-39	Universal and Ball Joint Assy.....	7-10	Wheel Cylinder	5-2
Top, Power Operated.....	1-37	Universal Joint Specifications.....	7-16	Wheels and Tires.....	10-1
Torque Tube	4-4	Vacuum Switch—		Balance	10-4
Torque Wrench Tightening.....	15-5	Carter	12-11	Car Tools	10-1
Torsion Balancers	6-6	Stromberg	12-9	Use of Jack.....	10-1
Trans. and Universal Joint.....	7-1	Valves	6-13	Wheel and Tire Specifications...	10-7
Alignment	7-1	Valve Lash	6-14	Wheel Bearings	10-1
Gaskets	7-1	Valve Lifters	6-14	Front Wheels	10-1
Lubrication	7-1	Valve Springs	6-13	Rear Wheels	10-2
Removal and Disassembly.....	7-11	Valve Timing	6-15	Windshield	1-17
Transmission Bearings	7-1	Ventilator Glass Replacement.....	1-33	Sealing	1-17
Cleaning Bearings	7-1	Voltage Check	12-20	Windshield Wiper Assembly.....	1-17
Transmission Main Drive Gear....	7-8	Voltage Regulator	12-15		